

2026 Double Handed Yacht Race Sailing Instructions



Amendments

Number	Instruction Changed	Summary of Amendment
3.	Class Flags	Addition of Division Class flags
A2.5	Race Communications	Addition of instruction
A4.4	Sign-On Schedule	Sign-On URL updated
D1.3	Finishing	Addition of instruction
C3	Course 3	Shortened
C5.2	Mark Description	RMYS E mark (labelled S) substitute mark

Key Information		
	Race Date and Warning Signal	0955 Sunday 17 May
	ORCV Office Phone	0493 102 744
	Race Director Phone	0418 396 605
	Race Director Email	race.director@orcv.org.au

Copyright © Ocean Racing Club of Victoria Inc 2026

All enquiries to:

Ocean Racing Club of Victoria Inc
 3 Aquatic Drive
 ALBERT PARK VIC 3206
 Australia
orcv@orcv.org.au

Contents

Amendments	2
Sailing Instructions	5
1. Rules.....	5
2. Notices to Competitors	5
3. Class Flags	5
4. The Start	5
5. The Course	6
6. The Finish	6
7. Time Limit	6
8. Protests and Requests for Redress.....	6
9. Penalty System.....	6
10. Boats Retiring	6
11. Safety Regulations.....	6
12. Unsuitable Conditions.....	7
13. Race Communications.....	7
14. Disclaimer of Liability	7
15. Crew Behaviour	8
16. Appendices	8
Appendix A: Race communications	9
A1 Emergency and Urgent Safety Messages	9
A2 General	9
A3 Scheduled Communications	9
A4 Sign-On Schedule.....	10
A5 Premature Starters	10
A6 Finishing Reports.....	10
A7 Boats Retiring	10
Appendix B: Start	12
B1 Start Time	12
B2 Starting Line.....	12
B3 Postponements.....	12

Appendix C: Courses and Marks	13
C1 Course 1 approx. 21 nm – Start to North.....	13
C2 Course 2 approx. 20 nm – Start to South	14
C3 Course 3 approx. 22 nm – Start to South	15
C4 Course 4 approx. 21 nm – Start to North.....	16
C5 Marks	17
Appendix D: Finish.....	18
D1 Finishing	18
D2 Finishing Times.....	18
D3 Presentation.....	18

Sailing Instructions

The 2026 Double-Handed Race will be conducted on the waters of Port Phillip. The Race is organised and conducted by the Ocean Racing Club of Victoria Inc (ORCV), in cooperation with Royal Melbourne Yacht Squadron.

1. Rules

- 1.1. The Race will be governed by the current versions of:
- The 2025-2028 Racing Rules of Sailing (RRS) of Australian Sailing (AS),
 - The Prescriptions and Special Regulations of Australian Sailing (AS),
 - The rules and regulations of the Australian Measurement System (AMS),
 - The rules and regulations of the Offshore Rating Congress (ORC).
- 1.2. All times in these Sailing Instructions are Australian Eastern Standard Time (AEST) unless otherwise stated.

2. Notices to Competitors

- 2.1. Notices to Competitors, including changes to Sailing Instructions, will be posted on the ORCV website www.orcv.org.au Notices to competitors will be posted on the ORCV website www.orcv.org.au.
- 2.2. Any change to these Sailing Instructions will be:
- posted on the ORCV website (www.orcv.org.au) before 0700 on the day of the Race
 - advised to competitors on VHF Channel 82 at the commencement of the Sign On Schedule. See Appendix A: Race Communications.

3. Class Flags

The Race will have the following Race Categories with the following Class Flags.

Race Category	Class Flag	
Monohull - Division 1	Romeo	R
Monohull - Division 2	Echo	E
Monohull - Division 3	Whisky	W
Combined Division	ORCV Burgee	

4. The Start

The start is as described in Appendix B: Start.

5. The Course

The courses are as described in Appendix C: Courses.

6. The Finish

The finish is as described in Appendix D: Finish.

7. Time Limit

The time limit for the first boat to finish is 1500. If the first boat finishes within the time limit, all other boats must finish by 1700. Any boat finishing after this time will be scored DNF (amends RRS 35).

8. Protests and Requests for Redress

- 8.1. Protests or requests for redress must be lodged with the Race Director within 60 minutes of the finish of the last boat.
- 8.2. A boat intending to protest or request redress must inform the Race Director by SMS or phone or by radio within 1 hour of finishing giving any details as may be known at the time.
- 8.3. Any protests or requests for redress will be heard at a time and place to be advised.
- 8.4. The date, time and venue for a protest hearing will be posted on the ORCV web site with participants notified.
- 8.5. All requests for redress involving the official results must be submitted within 4 hours of posting the results.

9. Penalty System

- 9.1. If, after a protest and hearing, a boat is found to have infringed a Rule, the Protest Committee may impose a penalty less than DSQ. The Protest Committee may apply a time penalty for a breach of a Rule or the Sailing Instructions, declared by an infringing competitor without a hearing, or after a hearing if a protest is contested.
- 9.2. A Two Turns Penalty will apply for breaking a rule of RRS, 44.2.
- 9.3. All penalties will be noted on the time sheet and will be applied to finishing times. Boat positions will be adjusted after penalties are applied (This complements RRS 64.1 and amends RRS 44.3).

10. Boats Retiring

Boats retiring must inform the Race Director as described in A7: Boats Retiring.

11. Safety Regulations

- 11.1. The Safety Category and regulations are as set out in the Notice of Race.
- 11.2. All crew of boats sailing Double Handed must wear lifejackets at all times when on deck.
- 11.3. Boats must keep clear of all commercial shipping (vessels more than 35 metres in length) while within Port Phillip, as required by Port of Melbourne Corporation Harbour Master's

Directions. Ships are restricted in their ability to manoeuvre while in the entrance of Port Phillip and boats must take any necessary avoiding action early.

- 11.4. In the event of avoiding action becoming necessary, a boat may start their engine and motor to avoid a shipping hazard, on a course perpendicular to the ship's track, for as long as necessary.
- 11.5. A boat that takes such action must return to the location the boat started motoring, cease motoring and resume racing as soon as possible. The details of any such action must be reported to the Race Director on finishing.
- 11.6. Any boat found to have impeded the progress of a commercial vessel will be disqualified.
- 11.7. A boat or its equipment may be inspected at any time for compliance with the Special Regulations, Notice of Race and Sailing Instructions.
- 11.8. The Race Director may, at their absolute discretion, disqualify a boat from participating or continuing to participate in the race if the Race Director believes that it is unsafe for that boat to commence or continue to race.

12. Unsuitable Conditions

- 12.1. After commencement of the race, the race can be terminated at the Race Director's discretion.
- 12.2. The Race Committee may deem the race to be abandoned, rescheduled to another time or shortened.
- 12.3. Prorated positions may be used to determine a result for the race and/or for any series.
- 12.4. Any termination of the race will be advised by radio on VHF Channel 82.

13. Race Communications

Race communications procedures are detailed in Appendix A: Race Communications.

14. Disclaimer of Liability

- 14.1. All those taking part in this race do so at their own risk and responsibility.
- 14.2. Acceptance of a boat as an entrant in the race is not to be taken as express or implied acceptance on the part of the ORCV and/or any of its Flag Officers, committee members, volunteers, Equipment Auditors or any other members, of the fitness of any boat or any equipment on such boat to safely compete in the race, and/or deal with any and all eventualities of the contemplated passage. It is the responsibility of each skipper of each competing boat to decide whether their boat is fit and suitably crewed for the intended purpose, and neither the ORCV nor any club, person or company connected with the organisation of the race is responsible for the seaworthiness of any boat whose entry is accepted.
- 14.3. Attention is drawn to Fundamental Rule 3 "Decision to Race" of the RRS which states:
"The responsibility for a boat's decision to participate in a Race or to continue racing is hers alone".

15. Crew Behaviour

- 15.1. All participants are reminded that they are expected to comply with ORCV's Member Protection Policy and Code of Conduct. For more information refer to: <https://www.orcv.org.au/club/inclusion-diversity-and-protection>
- 15.2. Skippers are reminded that crew behaviour is both the skipper and all the crew's responsibility to manage, at all times including during any deliveries or pre- and post-race social events.

16. Appendices

The following Appendices A, B, C and D form part of these Sailing Instructions.

Appendix A: Race communications

This Appendix describes the radio and other communications procedures to be followed during this Race.

A1 Emergency and Urgent Safety Messages

Urgent safety messages for the Race Director may be transmitted at any time on VHF Channel 82. The Race Director can be phoned on +61 418 396 605.

A2 General

- A2.1. While racing, a boat must neither make nor receive radio communications not available to all boats. This restriction also applies to mobile phones and satellite phones.
- A2.2. Failure to sign on before the end of the Sign-On Schedule will result in the boat being scored DNS.
- A2.3. Boats must not give false or misleading position reports.
- A2.4. Boats must monitor VHF Channel 16 at all times. ORCV recommends dual channel setup on VHF radios be used to allow Channel 16 monitoring at all times.
- A2.5. Delay in the broadcast of calls, or the order in which they are made, or any omission or failure in the transmission or reception of these, will not be grounds for a request for redress by a boat. This changes RRS 61.1(a). Scheduled Communications.

Time	Action	Channel or phone	Station
0800	TopYacht Mobile Sign-On		
0830	TopYacht Mobile Sign-On Complete		
0930 - 0945	Radio Sign-On where TY mobile sign-on has failed. Alterations to Sailing Instructions Postponement if Applicable	VHF Channel 82	Ocean Racing
0955-1000	Starting Sequence	VHF Channel 82	Ocean Racing
1000	Individual recalls may be notified	VHF Channel 82	Ocean Racing
Monitor	Unscheduled Announcements	VHF Channel 82	Ocean Racing
	Shortened course	VHF Channel 82	Ocean Racing
	Retirement, if applicable	VHF Channel 82	Ocean Racing
		0418 396 605	Race Director
Finish	Approximately 5 minutes from finish	VHF Channel 82	Ocean Racing
1500	Time Limit – First Boat to Finish		

A3 Sign-On Schedule

- A3.1. Each boat must sign-on using the TopYacht system to indicate its intention to race and the number of persons on board. All crew must complete their personal details, including emergency contact information, online using the TopYacht system. Sign-on must be completed via the link or QR code provided. Sign-on may be completed prior to race day; however, the number of persons on board must be confirmed by 0830 on the day of the Race.
- A3.2. A boat that fails to sign-on in accordance with A4.1 may, at the discretion of the Race Committee, have 5 minutes added to its elapsed time.
- A3.3. A boat experiencing difficulty using the TopYacht system may contact the Race Director on 0418 396 605 for assistance. If the Race Director cannot be contacted after the scheduled briefing at 0930, an alternative sign-on method may be arranged.
- A3.4. To access the TopYacht system, boats must have their sail number and the corresponding TopYacht password available, using the link or QR code below.

https://topyacht.com.au/db/kb2/mob_crew_login.php



- A3.5. Any variations to the course to be sailed will also be announced as part of the race communications schedule.

A4 Premature Starters

Premature starters may be identified on VHF Channel 82.

A5 Finishing Reports

When approximately 5 minutes from the finishing line, each boat must call the Race Director, Ocean Racing, on VHF Channel 82.

A6 Boats Retiring

- A6.1. If a boat retires from the race, every effort must be made to advise Ocean Racing as soon as possible and to give the following information:

- Time & position at the time of retirement
- Reason for retirement
- The state of the crew
- The port to which the boat is returning.

A6.2. A boat that retires must maintain their routine monitoring of VHF Channels 82 and 16 until such time as they reach a safe harbour.

A6.3. Upon arrival at a safe harbour, contact must be made with Ocean Racing by phone (0418 396 605) or VHF Channel 82 to confirm safe arrival. Failure to comply with this requirement may prejudice acceptance of an entry in future races.

Appendix B: Start

This Appendix contains information about the starting line and the starting procedures.

B1 Start Time

The warning signal is scheduled for 0955 (AEST) Sunday 18 May 2025.

B2 Starting Line

- B2.1. The Starting Line will be between a staff displaying an orange flag on the Committee Vessel at the starboard end and a yellow inflatable mark at the port end. The Committee Vessel will be located approximately 1 to 1.5 nm off the RMYS breakwater.
- B2.2. A crowding buoy may be laid in the vicinity of the committee vessel.
- B2.3. When the committee vessel is on station, after the preparatory signal, and before correctly starting:
- Any boat touching the crowding buoy or passing from the pre-start side of the starting line to the course side between the crowding buoy and the committee vessel must return to the pre-start side of the line by passing to the course side of and around the committee vessel before starting correctly.
 - Any boat passing from the course side to the pre-start side of the starting line between the crowding buoy and the committee vessel may be disqualified.
- B2.4. For premature starters returning to start correctly or late starters arriving in the start area, if the committee vessel is no longer on station at the starting line, the crowding buoy will be deemed to mark the starboard end of the starting line.
- B2.5. The Race will be started in accordance with RRS 26. Times will be taken from the flag signals. Failure of sound signals must be disregarded.
- B2.6. Any individual recalls will be signalled as per RRS 29.1.
- B2.7. Any premature starters may be identified by the Race Director on VHF Channel 82.
- B2.8. Any general recalls will be signalled as per RRS 29.2. A broadcast may be made by the Race Director on VHF Channel 82.

B3 Postponements

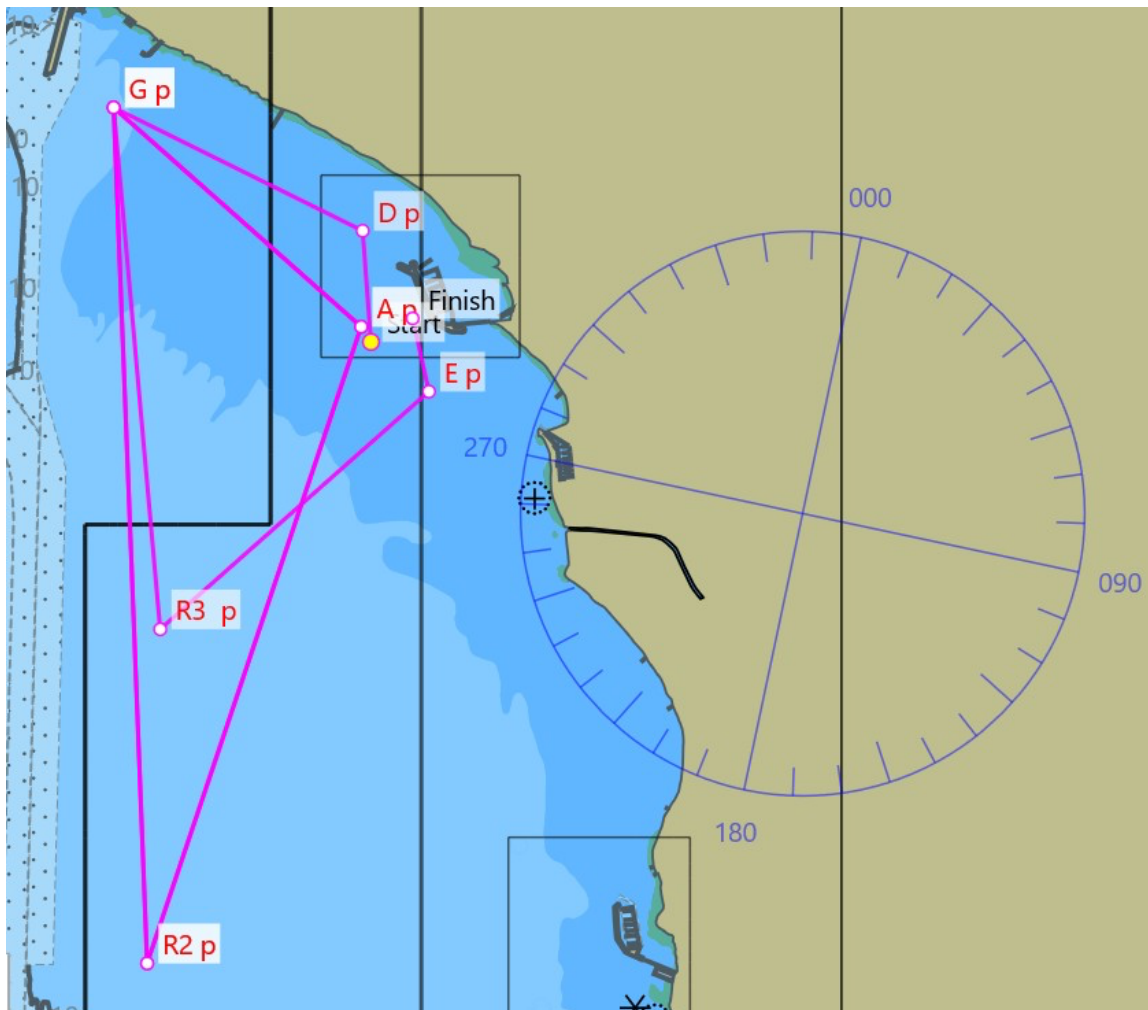
- B3.1. A postponement may apply if a Bureau of Meteorology Gale Warning is forecast for any part of the course.

Appendix C: Courses and Marks

This Appendix describes the course and how it is to be sailed.

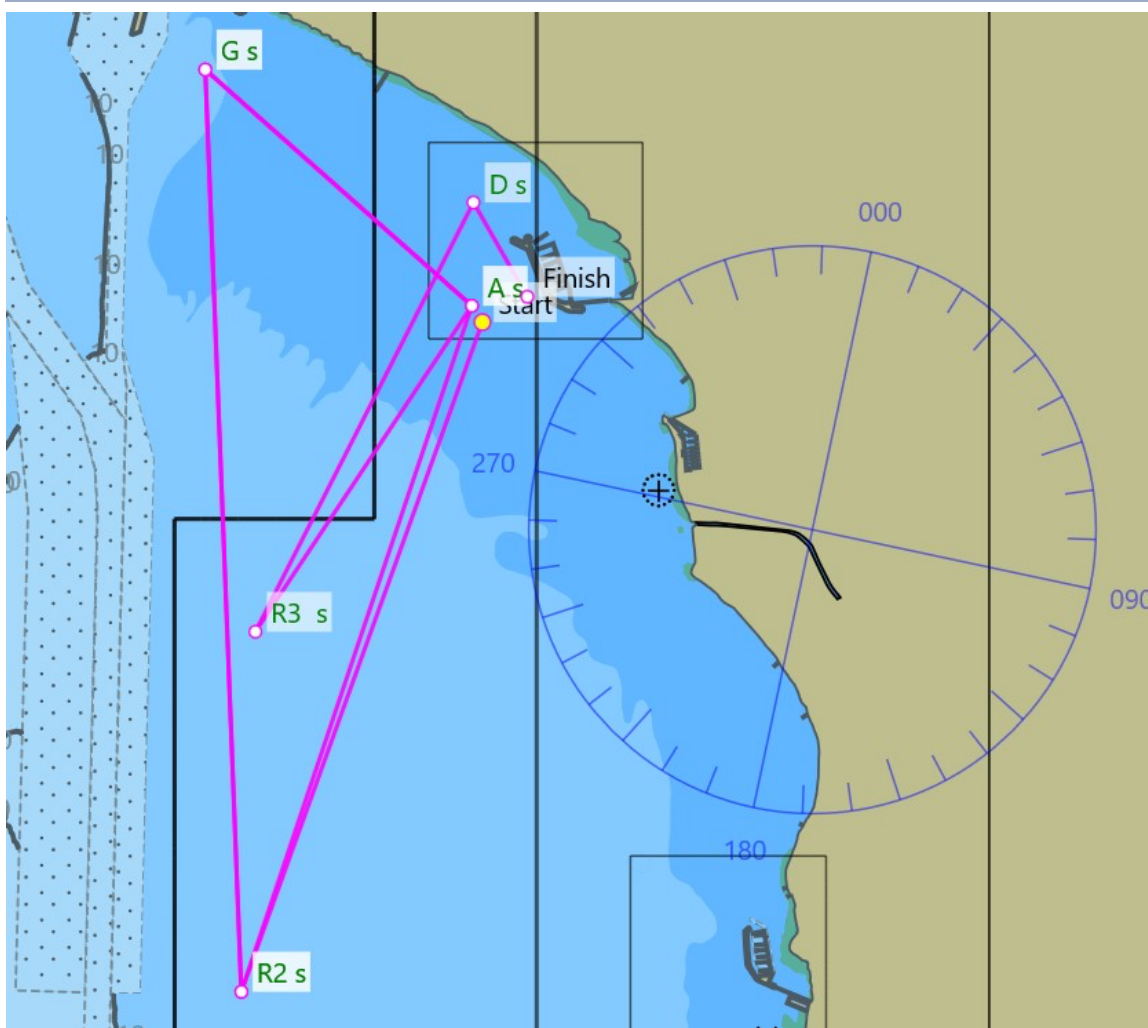
C1 Course 1 approx. 21 nm – Start to North

Description	
Start	Boat Start
Course	Start – round RMYS D to port – round RMYS G to port – round R2 to port – round RMYS A to port – round RMYS G to port – round R2 to port – round RMYS A to port – round RMYS G to port – round R3 to port – round RMYS E to port - Finish
Finish	Between RMYS A and RMYS Tower



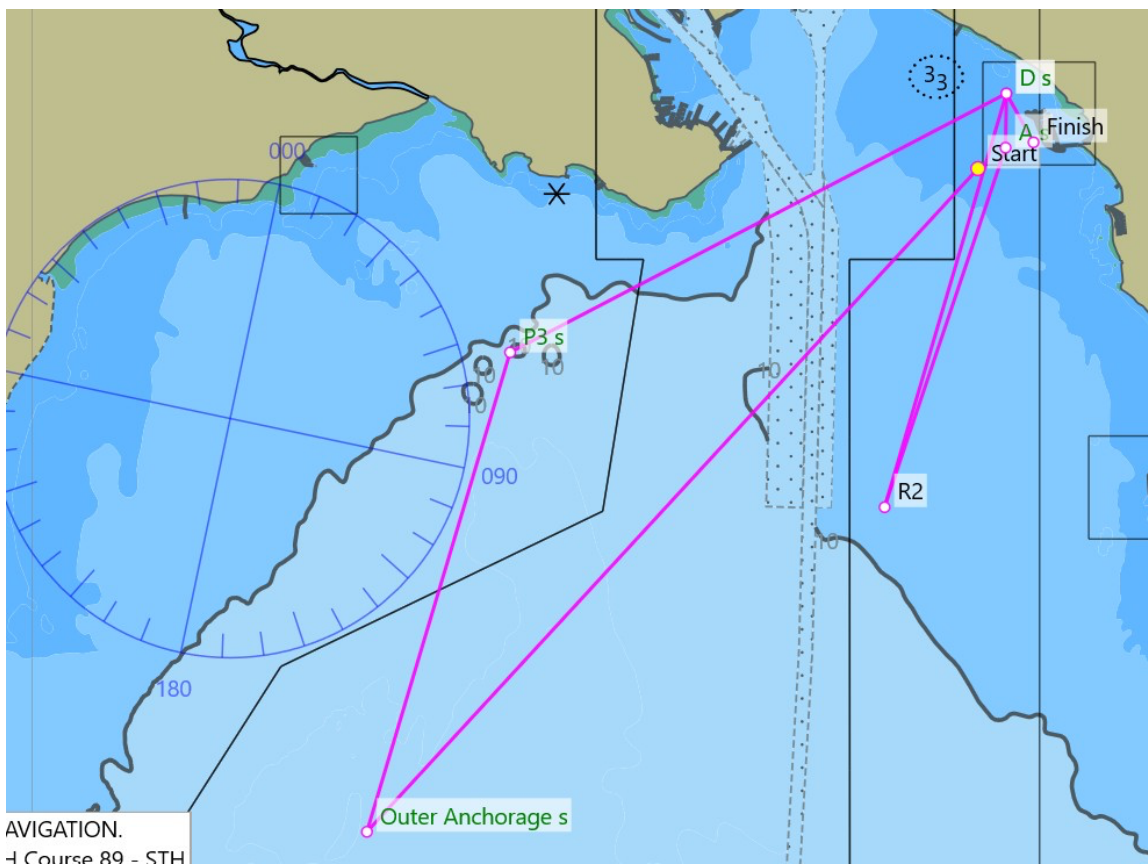
C2 Course 2 approx. 20 nm – Start to South

Description	
Start	Boat Start
Course	Start – round R2 to starboard – round RMYS G to starboard – round RMYS A to starboard – round R2 to starboard – round RMYS G to starboard – round RMYS A to starboard – round R3 to starboard – round RMYS D to starboard - Finish
Finish	Between RMYS A and RMYS Tower



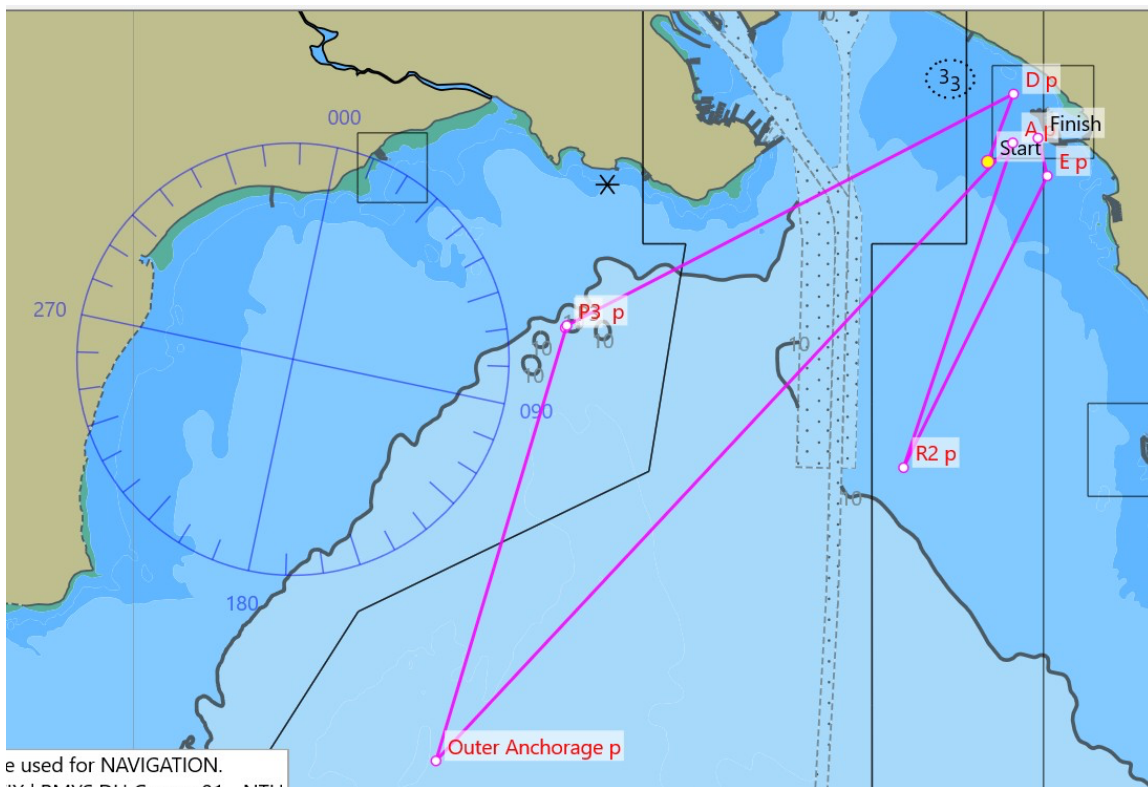
C3 Course 3 approx. 22 nm – Start to South

Description	
Start	Boat Start
Course	Start – round Outer Anchorage to starboard – round P3 to starboard – round RMYS D to starboard – round RMYS A to starboard – round R2 to starboard – round RMYS D to starboard - Finish
Finish	Between RMYS A and RMYS Tower



C4 Course 4 approx. 21 nm – Start to North

Description	
Start	Boat Start
Course	Start – round RMYS D to port – round P3 to port – round Outer Anchorage to port – round RMYS A to port – round R2 to port – round RMYS E to port - Finish
Finish	Between RMYS A and RMYS Tower



C5 Marks

- C5.1. The mark descriptions and positions should be used with consideration. They have been assembled from the best information available but may only be approximate and may contain errors. Skippers and navigators should verify mark information using their own resources.
- C5.2. If a given mark cannot be physically located, then round a virtual mark located as per the table below and report this, via SMS, to the race director on 0418 396 605.

Mark	Latitude	Longitude	Description
RMYS A	S37° 51.90'	E144° 57.47'	Yellow SP Buoy
RMYS B	S37° 53.18'	E144° 57.20'	Yellow SP Buoy
RMYS C	S37° 52.19'	E144° 56.41'	Yellow SP Buoy
RMYS D	S37° 51.48'	E144° 57.47'	Yellow SP Buoy
RMYS E	S37° 52.15'	E144° 57.79'	Yellow SP Buoy marked S
RMYS F	S37° 53.59'	E144° 56.30'	Yellow SP Buoy
RMYS G	S37° 51.00'	E144° 56.25'	Yellow SP Buoy
RMYS H	S37° 51.85'	E144° 57.69'	Yellow SP Buoy
R2	S37° 54.54'	E144° 56.34'	Yellow Light Buoy
R3	S37° 53.10'	E144° 56.23'	Yellow Light Buoy
P3	S37° 53.38'	E144° 52.85'	Pile with Light Frame
Outer Anchorage	S37° 56.91'	E144° 51.49'	Pile with Light Frame

Appendix D: Finish

This Appendix describes the finishing line and the finishing procedures.

D1 Finishing

- D1.1. When approximately 5 minutes from the finishing line, each boat must call the Race Director, Ocean Racing, on VHF Channel 82, and continue monitoring when finishing.
- D1.2. The Finishing Line will be between the mark RMYS A and RMYS Tower.
- D1.3. When finishing, leave mark H to same side of the tower.

D2 Finishing Times

- D2.1. Unless circumstances prevent it, the finishing times of all boats will be taken by the Race Director.
- D2.2. As a back-up, boats must record their own finishing times using GPS time, accurate to 1 second, and inform the Race Director of this time if requested.
- D2.3. The boat in front and behind must also be recorded by the finishing boat and provided to the Race Director if requested.

D3 Presentation

Results will be published on the ORCV web site as soon as practicable after the race. Trophies will be presented at the next annual ORCV awards ceremony on a date to be announced.