

# 2025 MELBOURNE TO HOBART: PRE-RACE BRIEFING

ORCV thanks our generous sponsors for their support for the Melbourne to Hobart Race – 53rd Westcoaster



Discover Tasmania



The Westcoaster (M2H) is supported by the Tasmanian Government through Events Tasmania

# *WELCOME TO THE MELBOURNE TO HOBART PRE-RACE BRIEFING*

*PRESENTERS - DAVID SCHULLER, KATE WOODLOCK, ROD SMALLMAN, NEVILLE ROSE*

---



**For those in attendance – please ensure you have updated the sign-in sheet**

**We would like to acknowledge and thank the numerous ORCV, SSCBC, DSS and AVCG volunteers and office staff who are helping to run this race**



## *WELCOME FROM THE RACE OPERATIONS TEAM*

---



**This evening, we will cover:**

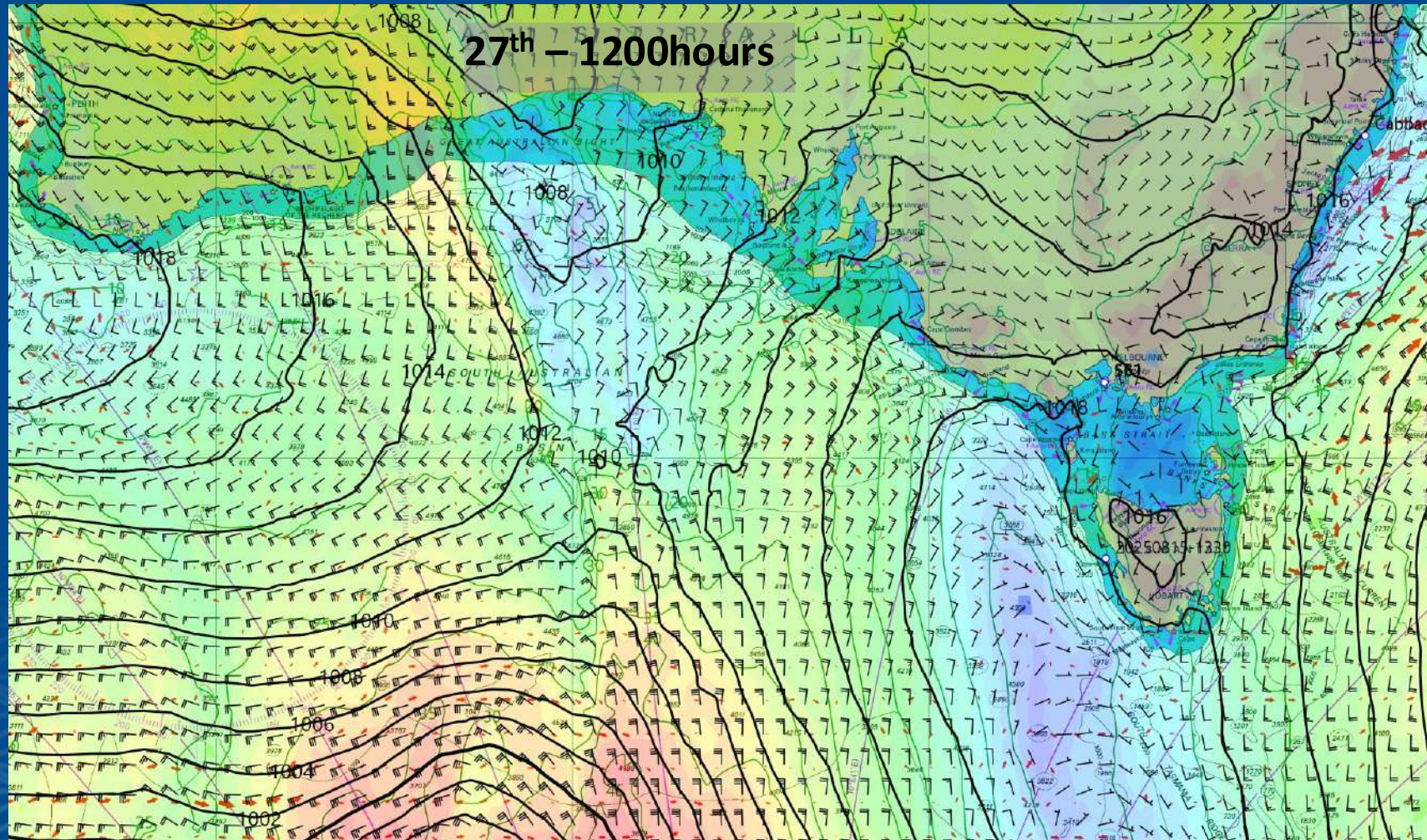
- **Weather expected for the race**
- **Highlight important things to know for this race and some key aspects of the Sailing Instructions**

**There will be an opportunity for questions at the end**

**We will now provide an insightful outlook for the upcoming weather conditions by ORCV's weather specialists Rod Smallman, Neville Rose, Josh Stuchbery and Greg Patten**



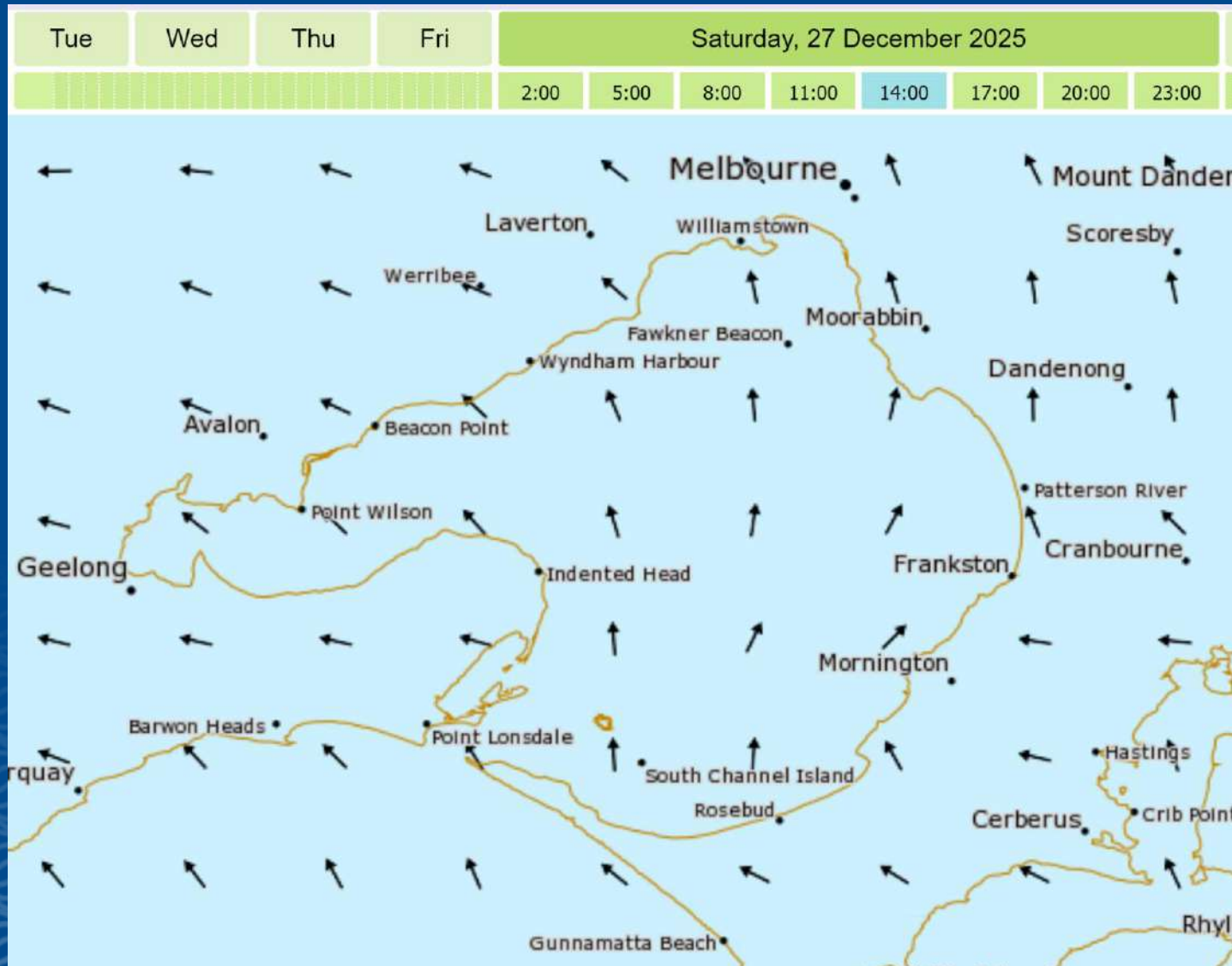
# PROGNOSIS CHART



## Race Start (Saturday 1330)

- Dominated by high pressure
- Light and variable winds for start
- There are stronger winds offshore on the 30<sup>th</sup> that could push through faster
- The highs are being slowed by low pressure in the Tasman Sea

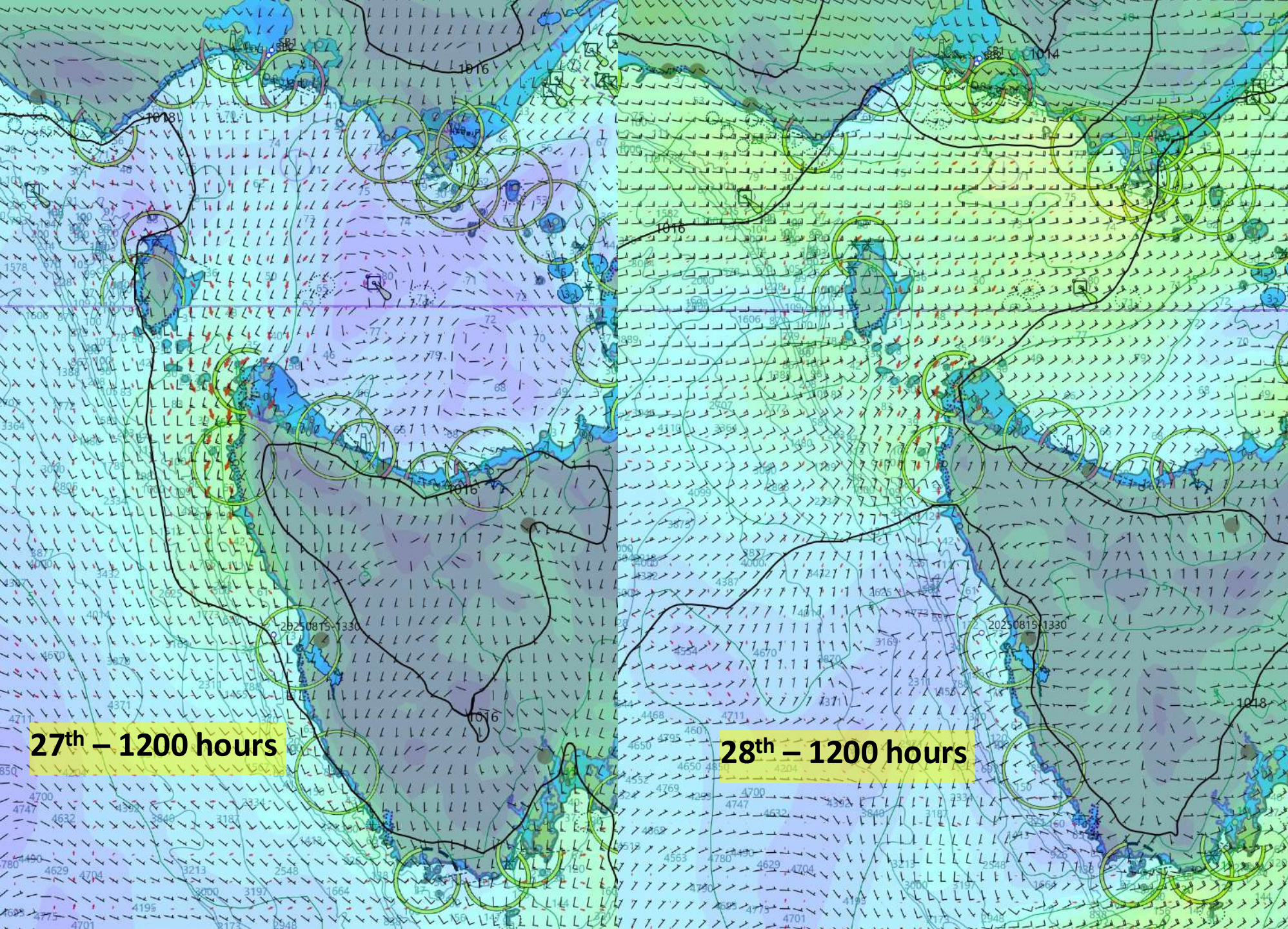
# BOM FORECAST (METEYE)



**Race Start (Saturday 1330)**

- Winds variable 0-10kts
- Keep clear of all shipping
- Remember Heads Exclusion Zone and Pilot Boarding Ground Exclusion Zone

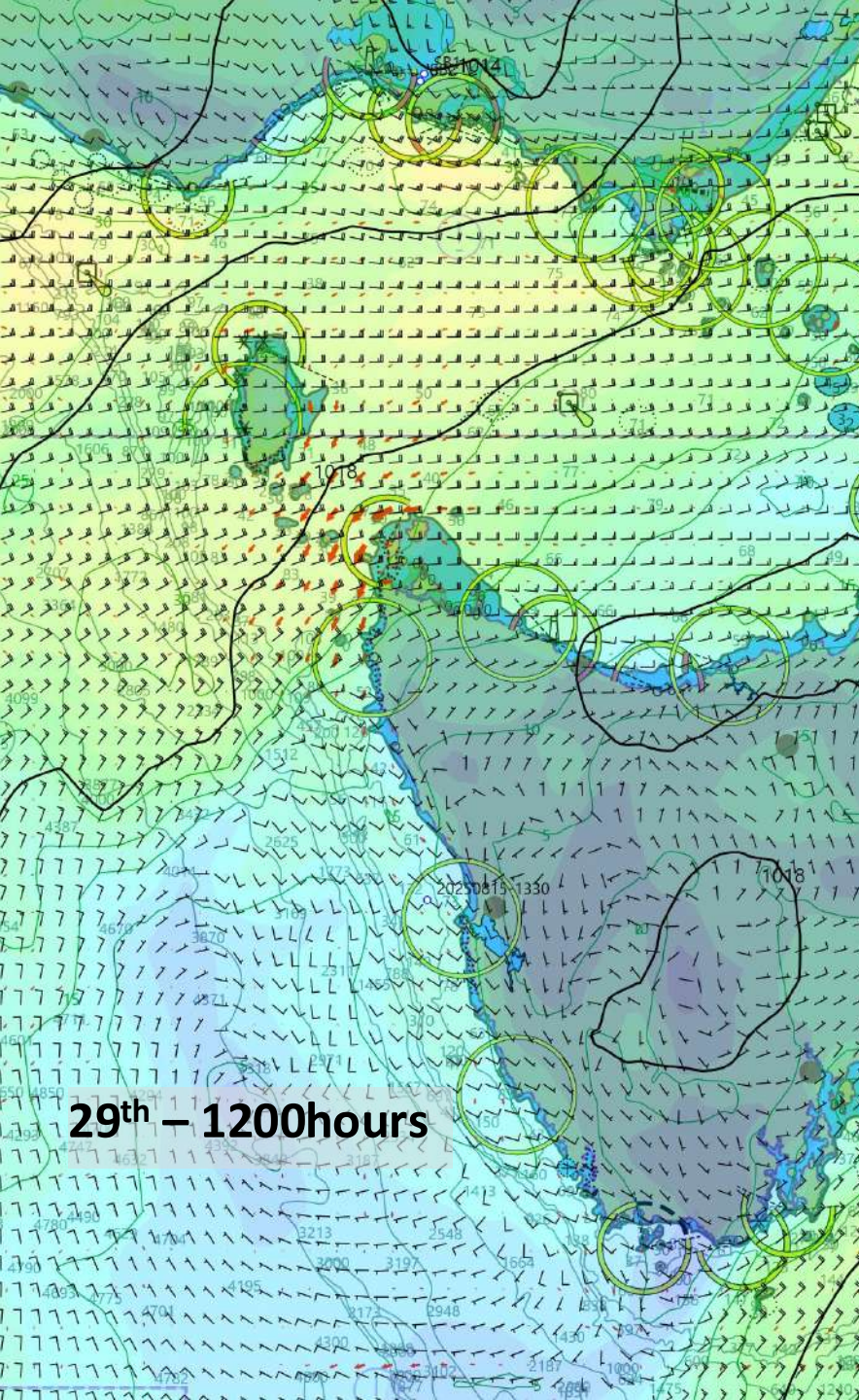




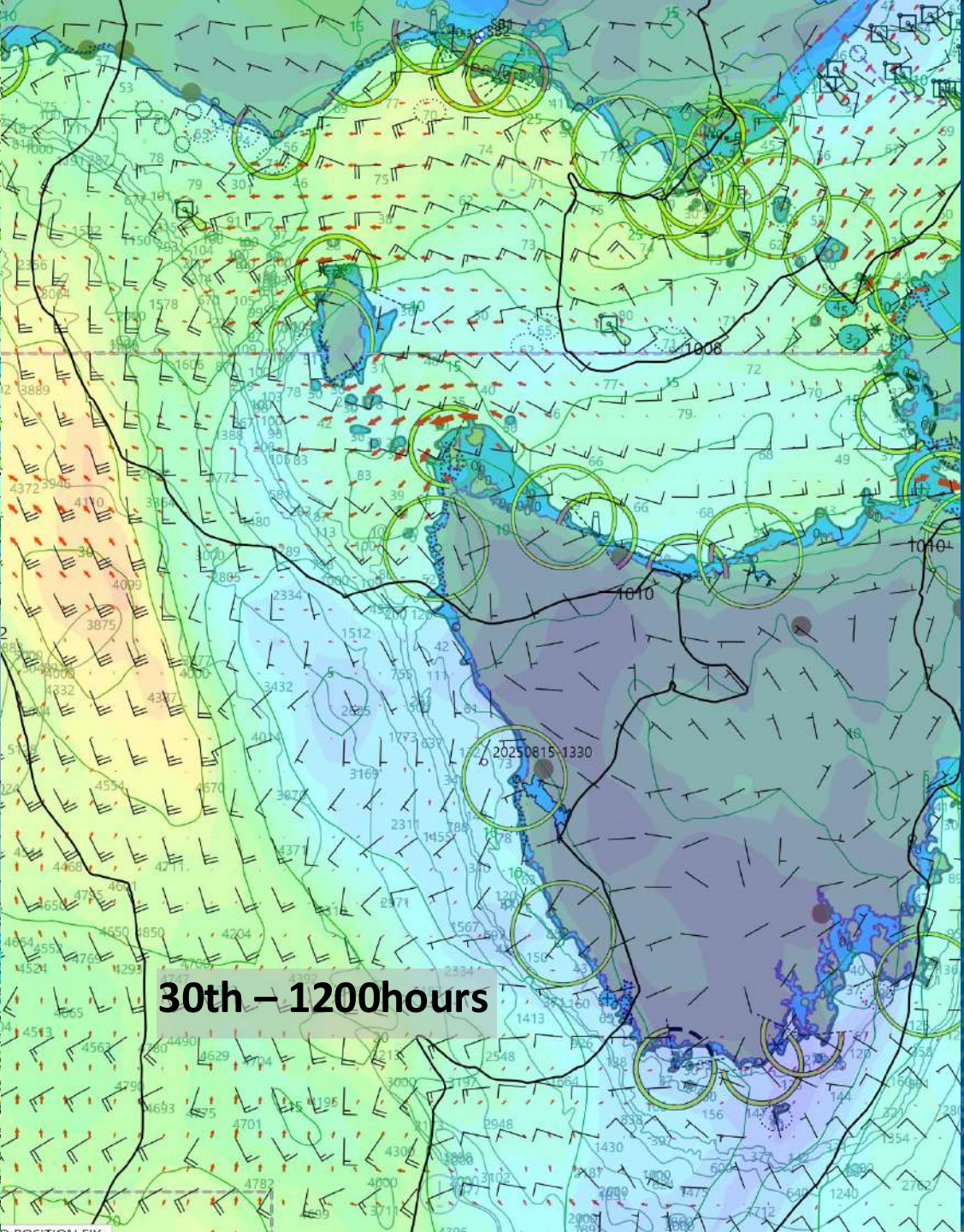
**27th - 1200 hours**

**28th - 1200 hours**



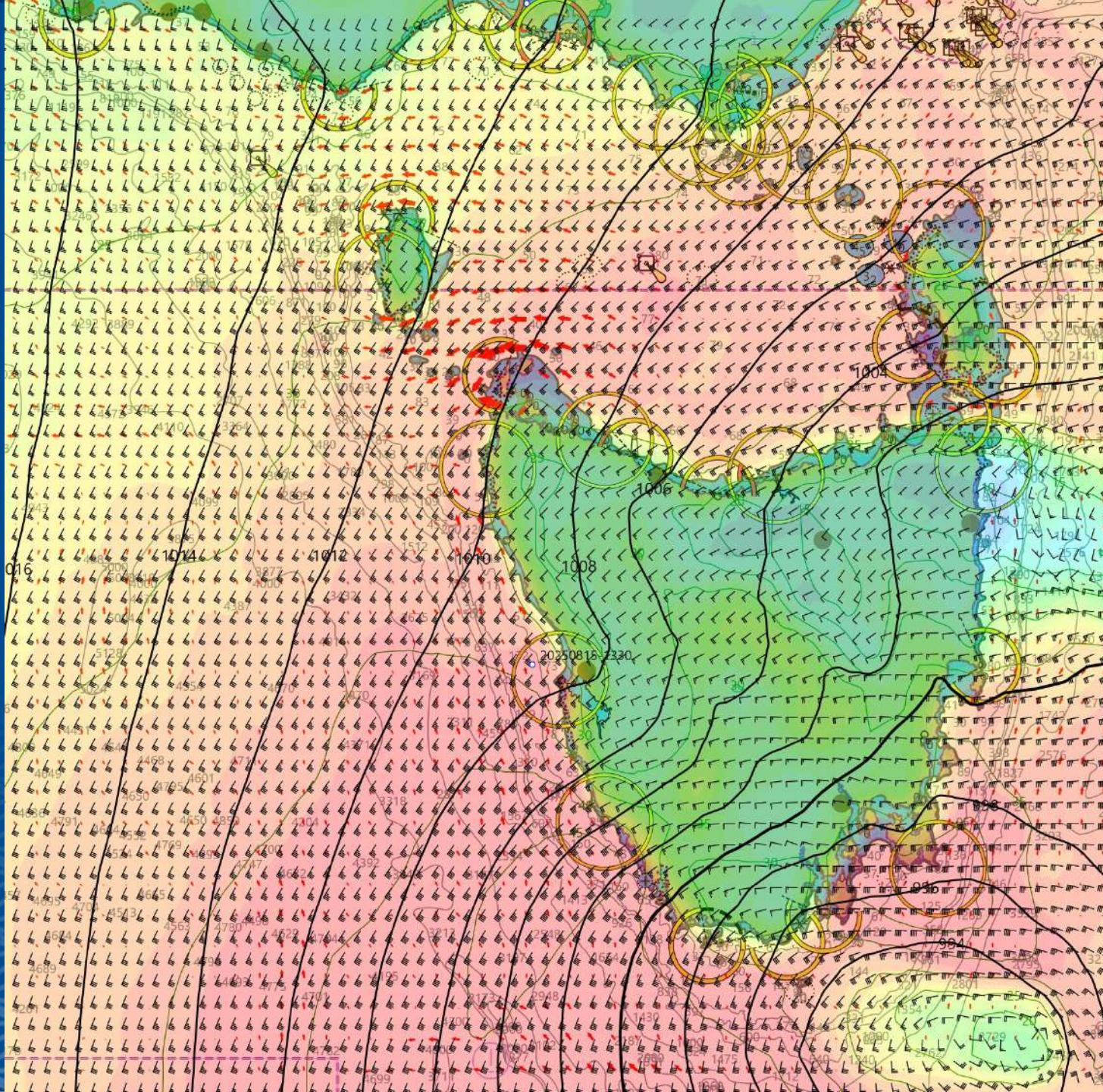


**29th – 1200hours**



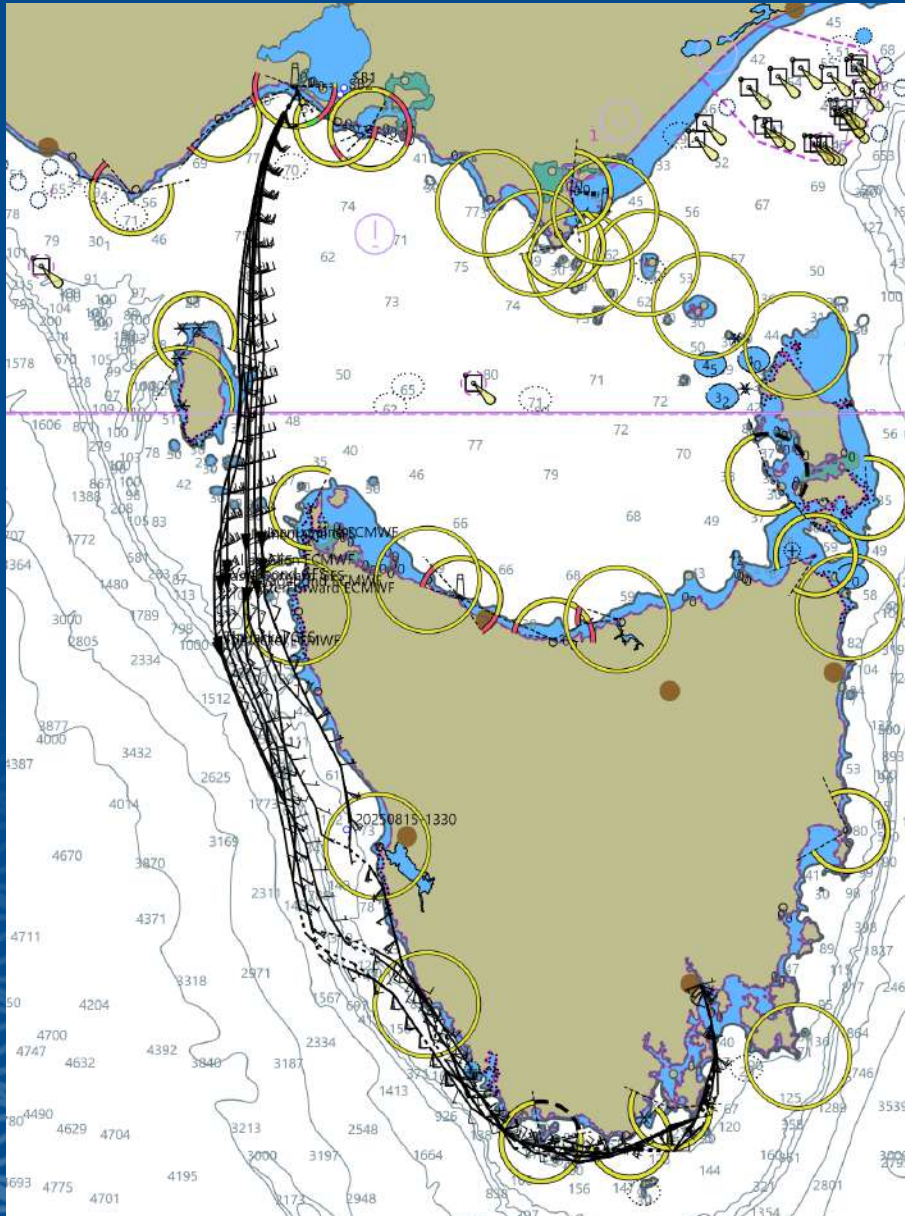
**30th – 1200hours**





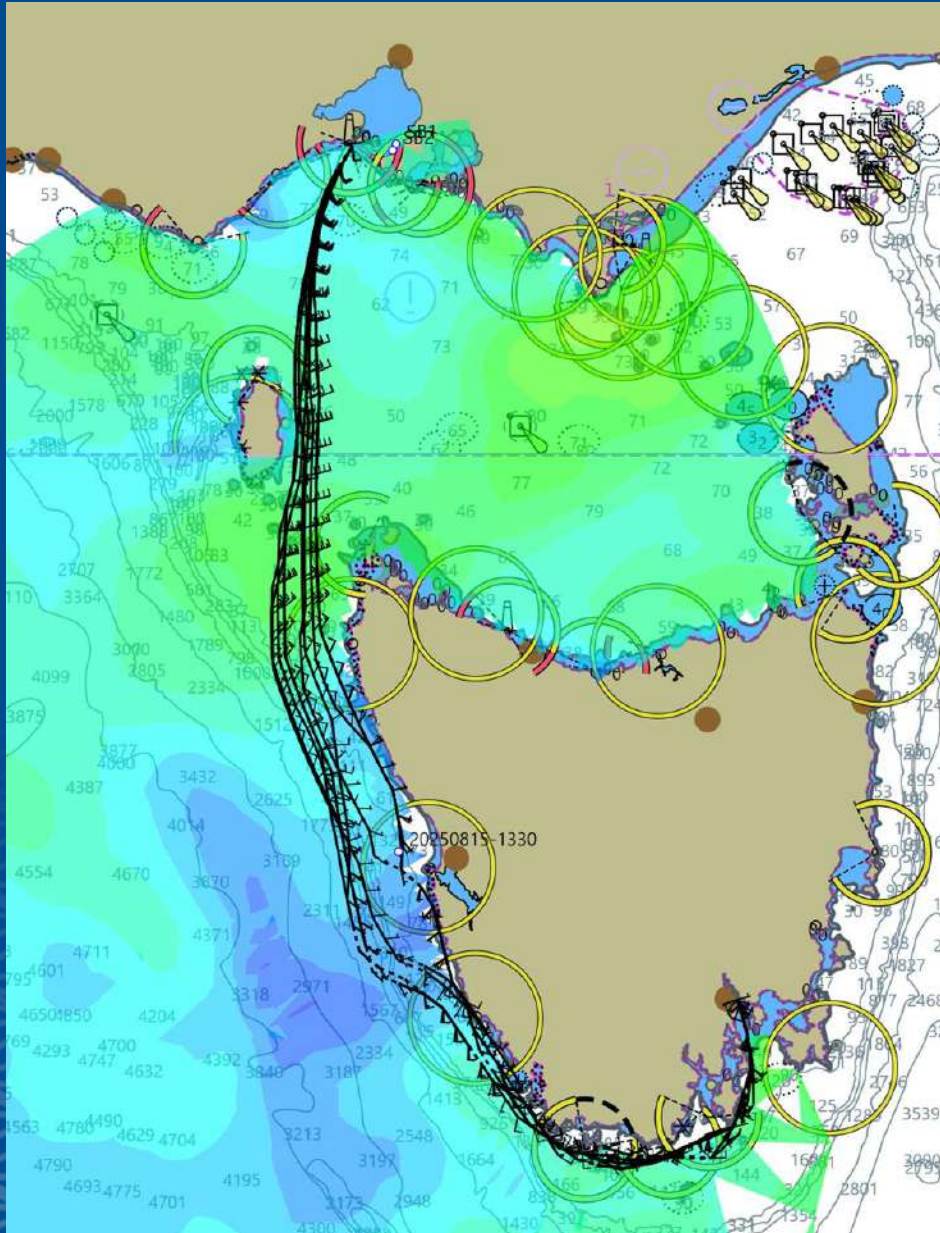
31st – 1200hours

# WEATHER BRIEFING – ROUTING



- Combined ECMWF & GFS routing
- Shows general agreement
- Routing shows fastest boat just less than 3 days and the slowest 3.5 days
- All boats should finish on Tuesday (if not early Wednesday morning)
- Should be on the North coast of Tasmania early 28<sup>th</sup>
- Strahan early 29<sup>th</sup> – and back into light and variable
- Fast boats Maatsuyker early evening 29<sup>th</sup> and slower boats early morning 30<sup>th</sup>

# WEATHER BRIEFING – ALONG THE ROUTE



- The main feature from this image is the light patch on the mid Tassie coast

# WEATHER BRIEFING – ANALYSIS



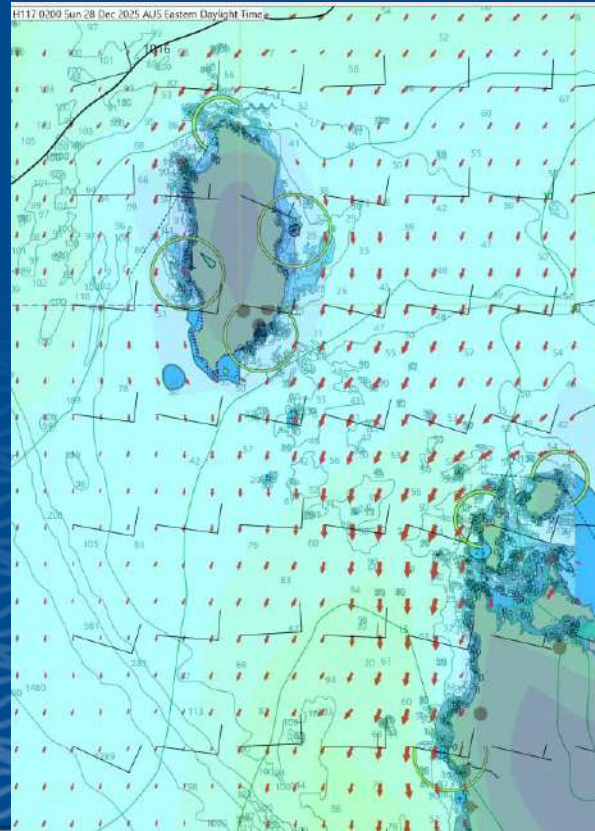
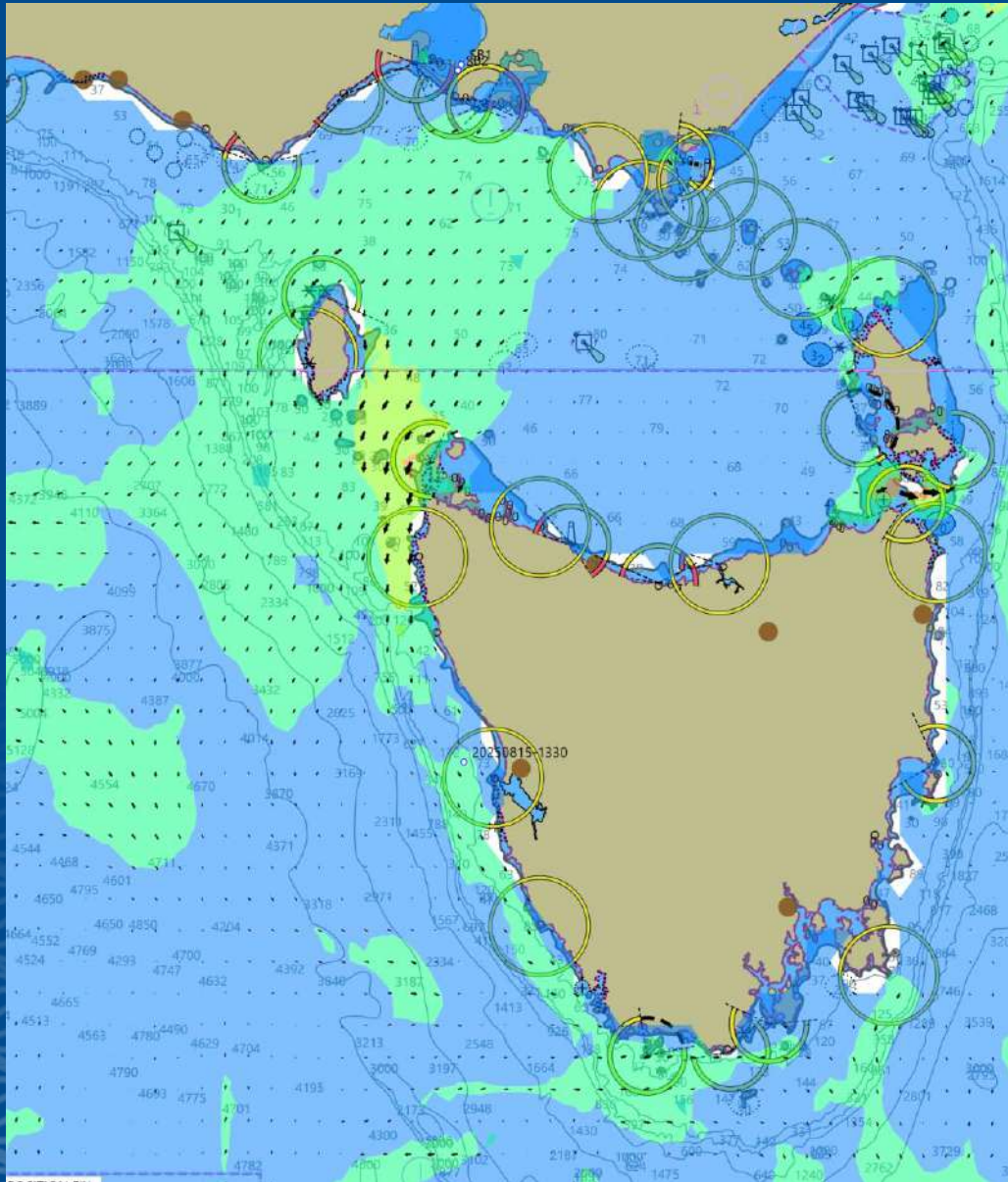
- Combined ECMWF & GFS routing for all boats
- Shows a predominate upwind event with more than 50% upwind
- Whilst you're not forecast to get more than 20kts, be aware that 50+ is not only possible but probable south of Tassie

twsl\td	40	50	60	70	80	90	100	110	120	130	140	150	160	170		
24															0.00	0.0%
22															0.00	0.0%
20										0.07	0.07				0.15	0.2%
18								0.05	0.38	0.14	0.07	0.07	0.08	0.30	1.09	1.4%
16	0.05						0.28	0.83	0.39	0.55	0.30	0.18	0.44	0.66	3.69	4.9%
14	1.29	0.04	0.35	0.11		0.20	0.21	0.57	0.68	0.36	0.76	0.17	0.58	0.78	6.08	8.0%
12	1.77	0.31	1.97	0.57	0.25	0.28	0.81	0.43	0.37	0.81	0.74	0.53	1.33		10.18	13.4%
10	3.81	1.46	3.22	0.37	1.08	0.68	1.29	3.05	0.66	0.59	0.48	1.13	0.25		18.06	23.8%
8	4.77	3.22	2.56	1.19	0.30	0.06		0.22	0.11	0.17	1.73	0.78	0.21		15.33	20.2%
6	2.71	2.32	1.67	0.98	0.32	0.19	0.06	0.34	0.40	0.23	0.87	0.15			10.22	13.5%
4	3.22	2.30	0.74	1.16	1.02	0.54	0.10	0.36		0.40	0.91				10.75	14.2%
2		0.26		0.10											0.35	0.5%
	17.61	9.91	10.51	4.48	2.96	1.94	2.75	5.85	2.99	3.31	5.94	3.01	2.89	1.74	75.90	100.0%
	23.2%	13.1%	13.8%	5.9%	3.9%	2.6%	3.6%	7.7%	3.9%	4.4%	7.8%	4.0%	3.8%	2.3%	100.0%	

# CURRENTS



- The image shows a general south & east flow along the bottom part and underneath Tassie
- The current in this image within Bass Strait is mostly tidal
- Tidal gate does look favourable for KI & Tas



Source:  
bom.gov.au



# TIDES – SLACK WATER @ RIP



The Rip, VIC – December 2025

PRINT TABLE

**Please note:** The predictions are in daylight saving time when it is observed.

TUE 23 DEC			WED 24 DEC			THU 25 DEC			FRI 26 DEC			SAT 27 DEC			SUN 28 DEC			MON 29 DEC		
SLACK	MAXIMUM		SLACK	MAXIMUM		SLACK	MAXIMUM		SLACK	MAXIMUM		SLACK	MAXIMUM		SLACK	MAXIMUM		SLACK	MAXIMUM	
TIME	TIME	RATE	TIME	TIME	RATE	TIME	TIME	RATE	TIME	TIME	RATE	TIME	TIME	RATE	TIME	TIME	RATE	TIME	TIME	RATE
	2:17 am	+4.37	12:14 am	2:57 am	+4.39	12:50 am	3:34 am	+4.35	1:26 am	4:10 am	+4.27	2:01 am	4:46 am	+4.13	2:37 am	5:23 am	+3.95	3:15 am	6:00 am	+3.71
6:34 am	9:04 am	-4.10	7:05 am	9:37 am	-4.29	7:34 am	10:08 am	-4.48	8:02 am	10:37 am	-4.68	8:28 am	11:07 am	-4.90	8:55 am	11:37 am	-5.13	9:22 am	12:08 pm	-5.33
12:39 pm	3:09 pm	+2.72	1:13 pm	3:47 pm	+2.89	1:47 pm	4:23 pm	+3.01	2:21 pm	5:00 pm	+3.10	2:57 pm	5:39 pm	+3.20	3:36 pm	6:23 pm	+3.29	4:19 pm	7:11 pm	+3.39
5:17 pm	8:08 pm	-5.10	6:01 pm	8:49 pm	-5.15	6:45 pm	9:30 pm	-5.10	7:30 pm	10:14 pm	-4.93	8:21 pm	11:02 pm	-4.66	9:18 pm	11:53 pm	-4.28	10:22 pm		

Source:  
bom.gov.au



# TIDES



## Stack Island, TAS – December 2025

[PRINT TABLE](#)

**Please note:** The predictions are in daylight saving time when it is observed.

TUE 23 DEC		WED 24 DEC		THU 25 DEC		FRI 26 DEC		SAT 27 DEC		☾ SUN 28 DEC		MON 29 DEC	
HIGH	3:24 am 2.08 m	HIGH	4:07 am 2.11 m	HIGH	4:51 am 2.13 m	HIGH	5:36 am 2.14 m	LOW	12:34 am 0.30 m	LOW	1:25 am 0.29 m	LOW	2:17 am 0.29 m
LOW	10:09 am 0.57 m	LOW	10:50 am 0.51 m	LOW	11:32 am 0.44 m	LOW	12:15 pm 0.37 m	HIGH	6:23 am 2.14 m	HIGH	7:12 am 2.12 m	HIGH	8:04 am 2.09 m
HIGH	3:35 pm 1.84 m	HIGH	4:21 pm 1.93 m	HIGH	5:08 pm 2.01 m	HIGH	5:57 pm 2.09 m	LOW	1:00 pm 0.31 m	LOW	1:46 pm 0.25 m	LOW	2:34 pm 0.21 m
LOW	10:07 pm 0.42 m	LOW	10:55 pm 0.37 m	LOW	11:44 pm 0.33 m			HIGH	6:48 pm 2.15 m	HIGH	7:41 pm 2.20 m	HIGH	8:37 pm 2.24 m

## Maatsuyker Island, TAS – December 2025

[PRINT TABLE](#)

**Please note:** The predictions are in daylight saving time when it is observed.

TUE 23 DEC		WED 24 DEC		THU 25 DEC		FRI 26 DEC		SAT 27 DEC		☾ SUN 28 DEC		MON 29 DEC	
HIGH	1:48 am 0.67 m	HIGH	2:21 am 0.70 m	HIGH	2:50 am 0.73 m	HIGH	3:19 am 0.77 m	HIGH	3:48 am 0.82 m	HIGH	4:19 am 0.87 m	HIGH	4:51 am 0.93 m
LOW	4:40 am 0.63 m	LOW	6:00 am 0.61 m	LOW	7:20 am 0.57 m	LOW	8:36 am 0.51 m	LOW	9:47 am 0.44 m	LOW	10:52 am 0.35 m	LOW	11:51 am 0.26 m
HIGH	11:08 am 1.01 m	HIGH	12:06 pm 0.95 m	HIGH	1:09 pm 0.89 m	HIGH	2:16 pm 0.82 m	HIGH	3:28 pm 0.76 m	HIGH	4:42 pm 0.71 m	HIGH	5:57 pm 0.67 m
LOW	7:03 pm 0.08 m	LOW	7:46 pm 0.13 m	LOW	8:27 pm 0.19 m	LOW	9:06 pm 0.25 m	LOW	9:42 pm 0.32 m	LOW	10:17 pm 0.39 m	LOW	10:50 pm 0.45 m

Source:  
bom.gov.au



# TRACKERS



- Turn it on BEFORE the Cock of the Bay start on the 26th
- It is your **responsibility** to check it is tracking by 5pm on 26<sup>th</sup>. Call 0418 396 605 if help needed
- Read the “how to” guide on the Garmin web site: <https://www.orcv.org.au/docman-link/tracker-documents/4314-inreach-se-explorer-plus-owners-manual/file>
- They will be charged but also carry a micro-USB cable
- If you would like to hire the tracker for your return journey, cost is \$60 / calendar month, so tick the declaration if you wish to use that option
- It is **your responsibility** to have them returned to the ORCV office end of January – call the office on **0493 102 744** to confirm drop off location
- Trackers have SMS capability which you may need - ORCV strongly recommends someone on the boat can operate this function
- if anyone has tracker problems leading to or at the start, call VHF 82

# RACE MANAGEMENT TEAM



## **Race Directors**

Race Director – David Schuller; Assistant Race Directors – Josh Stuchbery, Angela Riolo

Race Officers for Start – Neville Rose and SSCBC: Chris Clapp, mentored by Ben Fels

## **Weather Advisors**

Rod Smallman, Neville Rose, Josh Stuchbery and Greg Patten

## **Media and Destination Events**

Delma Dunoon, Krizza Martinez

Jane Austen (Media in Hobart)

Events - Support Volunteers - Richard and Cathy Grant, Catherine North, Nick Lewis

## **Incident Management & Medical**

Rik Head – IMT lead, Nick Lewis and Catherine North (Hobart) and Angela Riolo (Melbourne)

## **Medical Support Team (Melbourne)**

Ian Michell, Kathy Yu, Leo Cantwell, Hester Freeman, Prue Standen, Louis Scarrold

## **Office Support**

Annabel O'Connor and Hannah Williams (both here today)

# COMPETITORS



## Melbourne to Hobart Westcoaster 2025

Currently there are 5 competitors entered.

**PHS**

BOAT NAME	SAIL NO	CREW	SKIPPER	DESIGN	STATE	AMS	ORC AP	Monohull
<a href="#"><u>ALIEN</u></a>	R880	crew	Justin Brenan	Lidgard 36	VIC	0.895	1.1236	0.8700
<a href="#"><u>FASTER FORWARD</u></a>	R6155	crew	Matt Fahey	Sydney 38	VIC	0.952	1.1794	0.9000
<a href="#"><u>JOAN LORRAINE</u></a>	R4689	crew	Peter Garner	Beneteau Oceanis 46	VIC	0.868		0.8200
<a href="#"><u>THE JACKAL</u></a>	S113	crew	Matt Setton	Ker 11.3	Vic	0.992	1.2317	0.9500
<a href="#"><u>VAGABOND</u></a>	S477	crew	Andrew McConchie	Beneteau First 47.7	Vic	0.944	1.2204	0.8730

Handicaps are now finalised and posted

Any crew changes now to be communicated to the Office (until 24/12 midday, or Race Director via email or text)

# COMMUNICATIONS



There is comprehensive information in the Sailing Instructions

Please read through instructions in section 13 and Appendix A carefully – the format has been improved, simplified and there have been changes, i.e. mandatory listening watches

## A12 HF Radio Position Reports

A12.1. For boats using HF radios for position reporting, these schedules will be conducted by Tas Maritime Radio (TMR) at the following times (Reporting Time) and using the following frequencies.

Reporting Time	Frequencies	Position Time
2105	HF 4146kHz or, VHF Channels 67, 68 or 69 when in the TMR coverage area	2045
0905	HF 6227kHz (primary) & 8294kHz (secondary) or, VHF Channels 67, 68 or 69 when in the TMR coverage area	0845

The position reported must be the boat's position at the times listed in the Position Time column.

## A13 Satellite Phone Position Reports

A13.1. Boats using satellite phones for position reporting must record their positions at the relevant "Position Time" [2045 and 0845] and report that position to the Race Director via SMS message on 0418 396 605 by 2050 or 0850.

Reporting Time	Position Time
2050	2045
0850	0845

***Do you have the AMSA and the ORCV Race Director (RD) details programmed in your personal phone and your boat satellite phone?***

AMSA: +61 2 6230 6811

RD Phone: +61 418 396 605 (SMS & WhatsApp capability)      RD Email: [race.director@orcv.org.au](mailto:race.director@orcv.org.au)

# COMMUNICATIONS – RECENT CHANGES



**10 Minute Listening watches will be held each day at 0305 and 1505 to enable transmission of messages from the Race Director, from boats to the Race Director and between boats.**

**The shore station (TMR or Kordia – using the call sign Charleville Radio) will commence each listening watch with an announcement that either there is, or is not, a message from the Race Director. This announcement will be repeated after a one-minute interval before calling for any messages from boats to the Race Director**

Time	Frequencies	Station
<b>0305</b>	VHF Channel 16, and if equipped with HF radio 8294kHz	Kordia – Charleville Radio
<b>1505</b>	VHF Channel 16, and if equipped with HF radio 4146kHz (primary) or 6227kHz (secondary)	TMR

# COMMUNICATIONS

## – SIs A3

Sign-on →

A6.3. Boats will be called in alphabetical order to confirm that they are starters in the Race. If intending to Race, each boat must reply

*"{boat name} is a starter, we comply with the Notice of Race, {xx} persons on board, OVER".*

Date	Time	Action	Channel	Station
26 December	1800-2100	Late Crew Changes	0418 396 605	Race Director
27 December	0930	Weather Briefing	Online - Teams	-
27 December	1230-1315	Monitor (Pre-Race Comms)	VHF Channel 82	Ocean Racing
27 December	1245-1315	Sign-On Schedule	VHF Channel 82	Ocean Racing
27 December	1315	Shipping Advice	VHF Channel 12	Ocean Racing
27 December	1325-1330	Starting Sequence	VHF Channel 12	Ocean Racing
27 December	1330	Individual recalls may be notified	VHF Channel 12	Ocean Racing
27 December	1505	Listening Watch	See A14	TMR
27 December	2045 2105	Reporting Schedule (SP) Reporting Schedule (HF)	SMS 0418 396 605 HF or VHF	Race Director Tas Maritime
28 December	0305	Listening Watch	See A14	Kordia (Charleville Radio)
28 December	0845 0905	Reporting Schedule (SP) Reporting Schedule (HF)	SMS 0418 396 605 HF or VHF	Race Director Tas Maritime
Thereafter every day in this cycle	Times may be altered by Radio Stations if necessary	Reporting Schedules and Listening Watches	SMS 0418 396 605 HF or VHF See A14	Race Director TMR/Kordia (Charleville Radio)
Latitude 41°S		Mandatory Report	VHF Channel 16	Tas Maritime
Iron Pot Light		1 <sup>st</sup> finishing Report	SMS 0418 396 605 Or VHF73	Race Director
10 Minutes from Finish line		2 <sup>nd</sup> Finishing Report	VHF Channel 73	Ocean Racing
Berthing		Post Finish	VHF Channel 9	DSS Tender

# COMMUNICATIONS

## – SIs A3

The position recorded is 15mins prior to the hour

- Satphone reporting is 10mins prior to the hour
- HF radio reporting is 5 mins after the hour

1<sup>st</sup> Listening Watch 

1<sup>st</sup> Reporting Schedule 

Set an alarm, so you do not miss the watches or skeds

9.6. Elapsed time or other penalties may be imposed for non-compliance with the Race Communications procedures as set out in the following table.

Penalty	Breach
10 minutes	Failure to report a position at a reporting schedule.
30 minutes	Failure to report positions at 2 non-consecutive reporting schedules.
DSQ	Failure to report positions at 2 consecutive reporting schedules.
DSQ	Failure to make a declaration when in the vicinity of 41°S in accordance with Instruction A10

Date	Time	Action	Channel	Station
26 December	1800-2100	Late Crew Changes	0418 396 605	Race Director
27 December	0930	Weather Briefing	Online - Teams	-
27 December	1230-1315	Monitor (Pre-Race Comms)	VHF Channel 82	Ocean Racing
27 December	1245-1315	Sign-On Schedule	VHF Channel 82	Ocean Racing
27 December	1315	Shipping Advice	VHF Channel 12	Ocean Racing
27 December	1325-1330	Starting Sequence	VHF Channel 12	Ocean Racing
27 December	1330	Individual recalls may be notified	VHF Channel 12	Ocean Racing
27 December	1505	Listening Watch	See A14	TMR
27 December	2045 2105	Reporting Schedule (SP) Reporting Schedule (HF)	SMS 0418 396 605 HF or VHF	Race Director Tas Maritime
28 December	0305	Listening Watch	See A14	Kordia (Charleville Radio)
28 December	0845 0905	Reporting Schedule (SP) Reporting Schedule (HF)	SMS 0418 396 605 HF or VHF	Race Director Tas Maritime
Thereafter every day in this cycle	Times may be altered by Radio Stations if necessary	Reporting Schedules and Listening Watches	SMS 0418 396 605 HF or VHF See A14	Race Director TMR/Kordia (Charleville Radio)
Latitude 41°S		Mandatory Report	VHF Channel 16	Tas Maritime
Iron Pot Light		1 <sup>st</sup> finishing Report	SMS 0418 396 605 Or VHF73	Race Director
10 Minutes from Finish line		2 <sup>nd</sup> Finishing Report	VHF Channel 73	Ocean Racing
Berthing		Post Finish	VHF Channel 9	DSS Tender

# DECLARATION AT 41° SOUTH



When in the vicinity of latitude 41°S, the skipper of each boat is to assess whether the boat meets the following requirements:

- Your boat's declared position reporting method, being HF radio or sat phone is fully operational and has a signal strength fit for the remainder of the Race;
- The required number of life rafts are on board;
- Your engine and battery charging are operational;
- The boat and crew are in a satisfactory condition to continue; and
- The skipper has comprehensively considered the most current weather forecasts and considers that the boat and crew are fully prepared for the conditions forecast.

If the boat meets all requirements above, a declaration report is to be made to TMR (on Channel 16) before continuing the race.

See Sailing Instruction A10 for full details

# COMMUNICATIONS

## – SIs A3

Date	Time	Action	Channel	Station
26 December	1800-2100	Late Crew Changes	0418 396 605	Race Director
27 December	0930	Weather Briefing	Online - Teams	-
27 December	1230-1315	Monitor (Pre-Race Comms)	VHF Channel 82	Ocean Racing
27 December	1245-1315	Sign-On Schedule	VHF Channel 82	Ocean Racing
27 December	1315	Shipping Advice	VHF Channel 12	Ocean Racing
27 December	1325-1330	Starting Sequence	VHF Channel 12	Ocean Racing
27 December	1330	Individual recalls may be notified	VHF Channel 12	Ocean Racing
27 December	1505	Listening Watch	See A14	TMR
27 December	2045 2105	Reporting Schedule (SP) Reporting Schedule (HF)	SMS 0418 396 605 HF or VHF	Race Director Tas Maritime
28 December	0305	Listening Watch	See A14	Kordia (Charleville Radio)
28 December	0845 0905	Reporting Schedule (SP) Reporting Schedule (HF)	SMS 0418 396 605 HF or VHF	Race Director Tas Maritime
Thereafter every day in this cycle	Times may be altered by Radio Stations if necessary	Reporting Schedules and Listening Watches	SMS 0418 396 605 HF or VHF See A14	Race Director TMR/Kordia (Charleville Radio)
Latitude 41°S		Mandatory Report	VHF Channel 16	Tas Maritime
Iron Pot Light		1 <sup>st</sup> finishing Report	SMS 0418 396 605 Or VHF73	Race Director
10 Minutes from Finish line		2 <sup>nd</sup> Finishing Report	VHF Channel 73	Ocean Racing
Berthing		Post Finish	VHF Channel 9	DSS Tender

Text or Radio in →

Radio in →

# COMMUNICATIONS – KEY POINTS



## **Actively monitor VHF16 and your sat phone**

Which means don't turn them off or turn the volume down so crew can sleep. Ideally have a speaker or handheld on deck

## **We may need you to relay a message or contact you direct**

e.g. We may need you to communicate with a nearby vessel in distress  
e.g. Inadvertent PLB or AIS SART activation

## **We may need you to rescue someone**

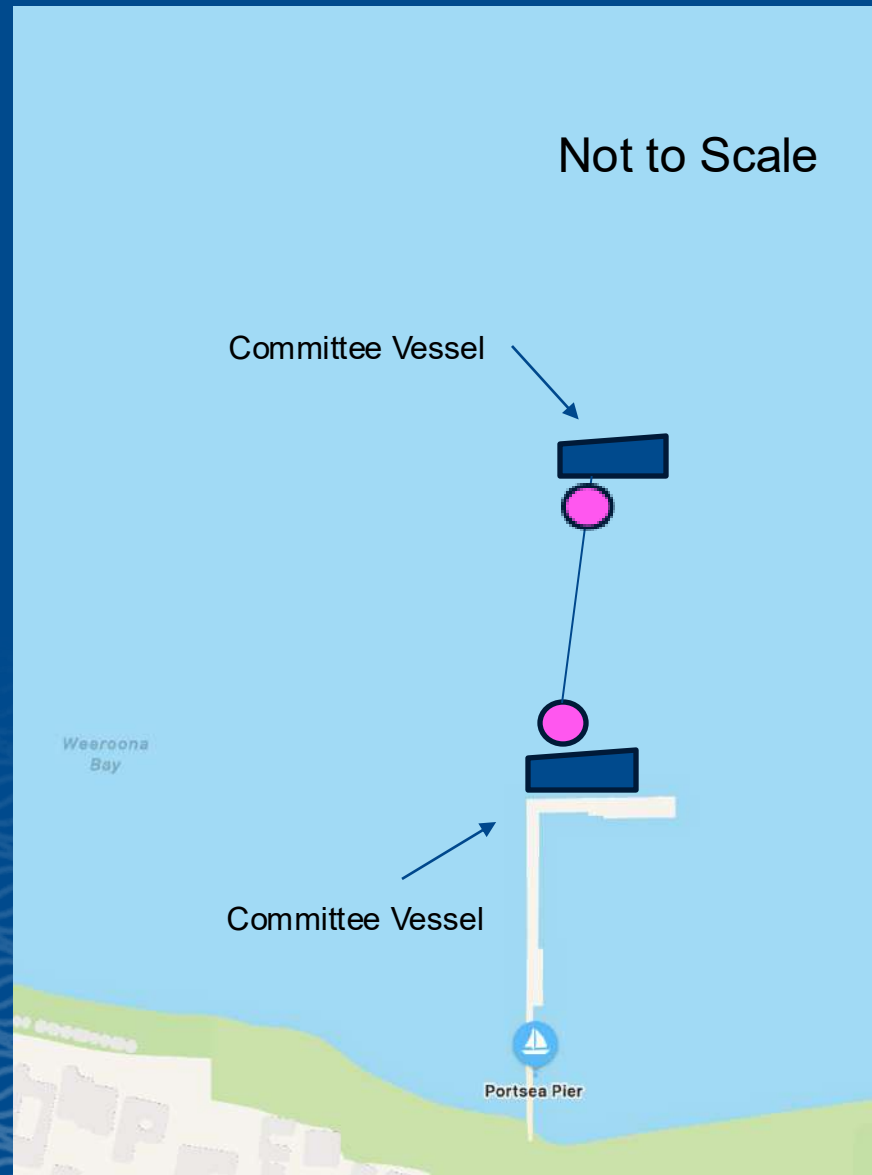
You can't help if you can't be contacted

## **It may help to avoid an incident**

A serious run aground could have been avoided if the competitor was monitoring VHF 16 and heard the other nearby competitor's warning



# START LINE



- The starting line is between staffs displaying orange flags on the Race Committee vessels
- One or two pink inflatable crowding buoys may be laid in the vicinity of the Race Committee vessels
- Boats must start in a North Westerly direction
- When any Race committee vessel is on station, any boat passing between any crowding buoy and the Race Committee vessel may have up to 60 minutes added to its elapsed time at the discretion of the Race Director

# HEADS EXIT



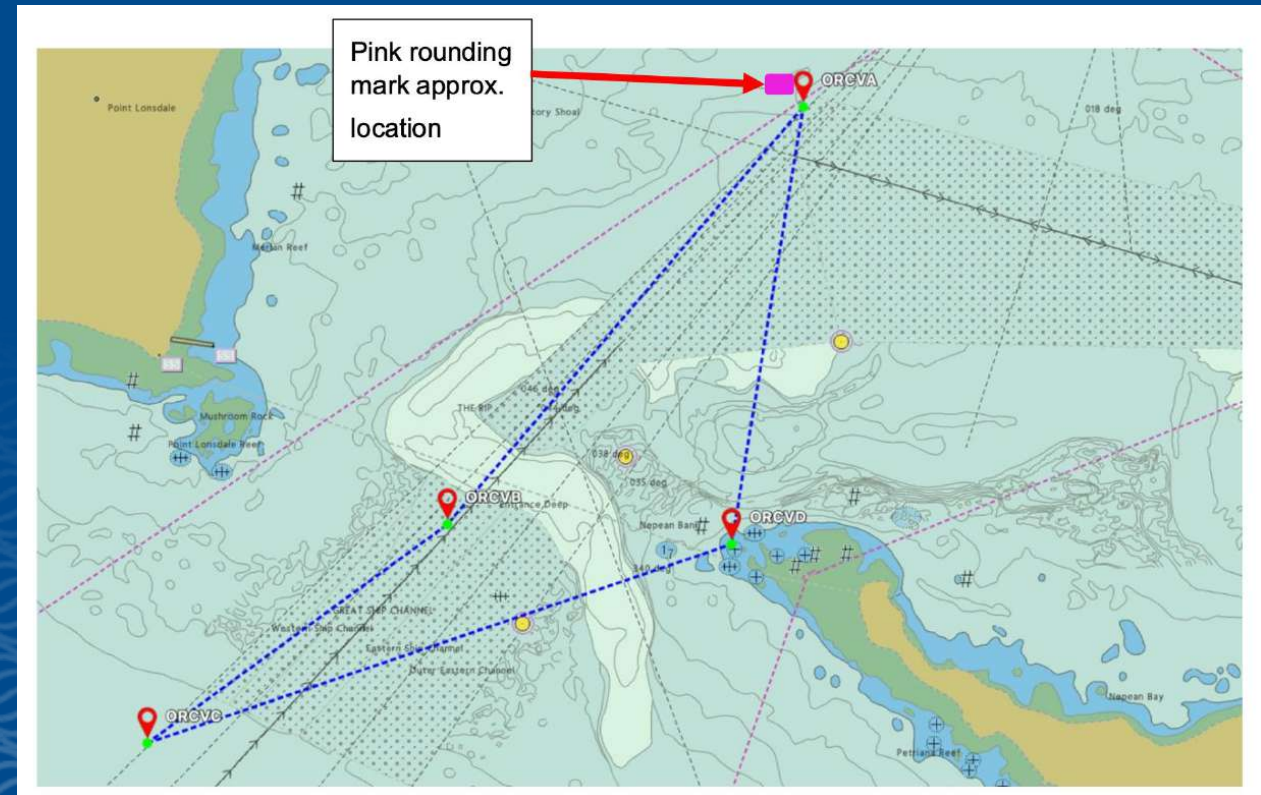
## Note: Harbour Masters Directions Section 5.6 for Keep Clear areas

Vessels to which this section applies must keep out of the way of:

- vessels with an LOA of 50 m or greater (if in doubt, the Master should assume that the other vessel's length is 50 m or greater)
- a tug or lines boat assisting the movement, berthing or unberthing of another vessel.

Shipping channels and their approaches are areas where the interaction between large ships and small craft can be particularly hazardous. Small boat operators should exercise particular caution in the vicinity of these areas and must avoid impeding the passage of vessels which can safely navigate only within the confines of a shipping channel or fairway.

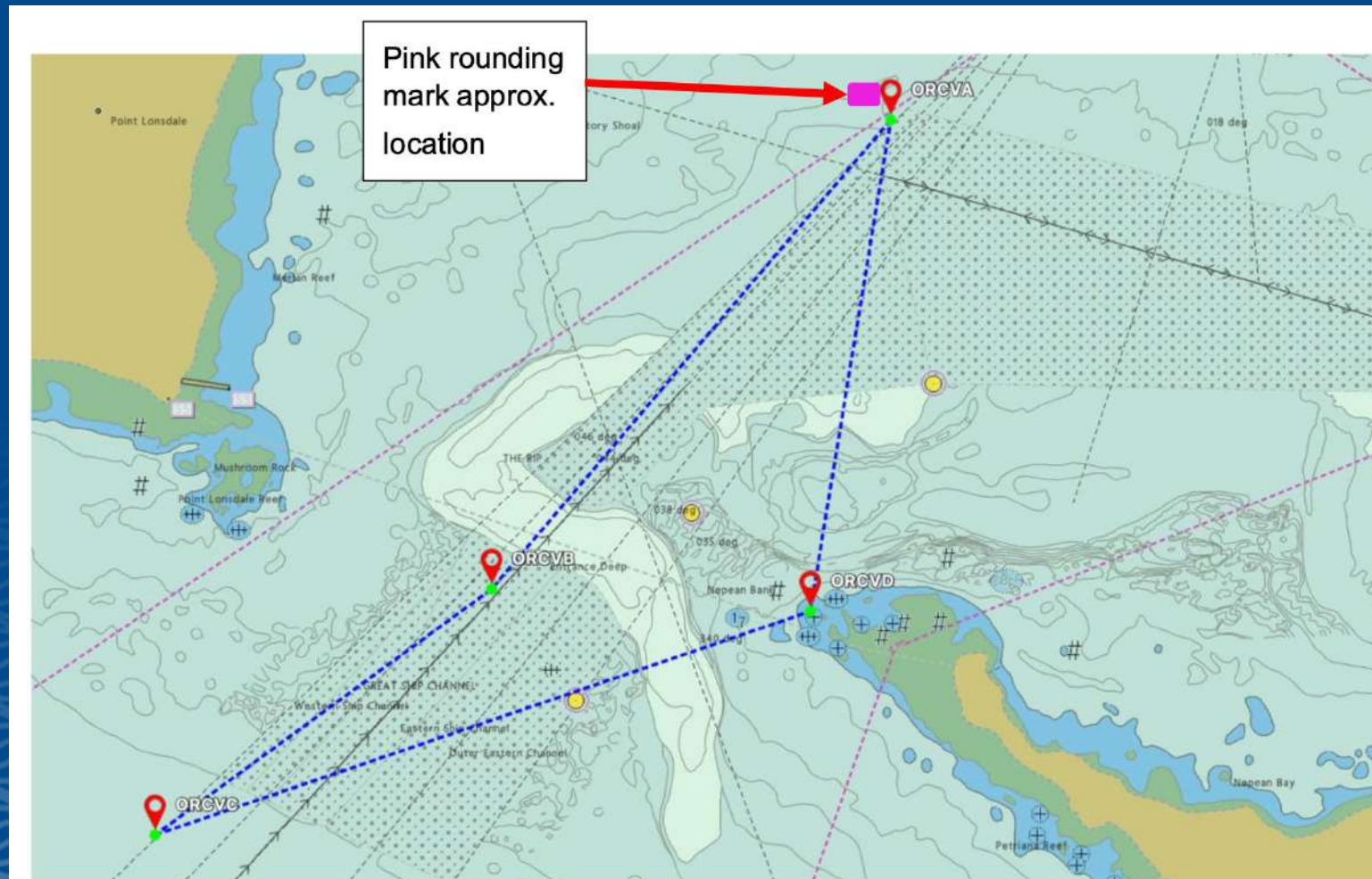
(Edition 13.1, Sept 2023)



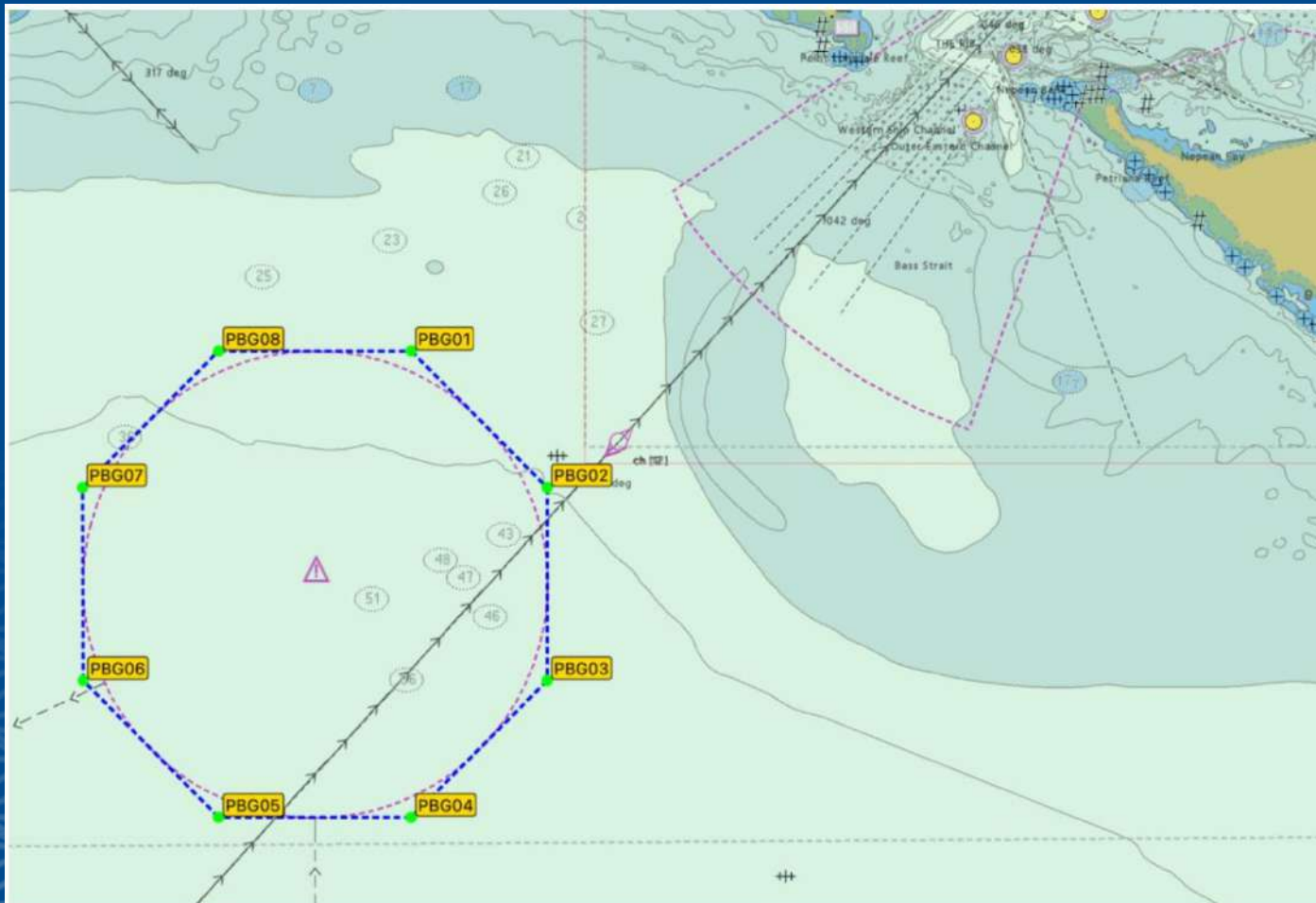
# HEADS EXIT

- You must take a photo of your heads exit track on your plotter
- Provide to the Race Director upon request
- We will be watching AIS
- The penalty for sailing within the bounds of any exclusion zone in Appendix C of the SIs – is DSQ

A reminder for the return. Skippers who enter the Rip on the western side using the Fort West ISO (flashing) beacon, it's worth remembering that boats need to be well into the white sector of the Beacon to line up with 4 Fingers West



# PILOT BOARDING GROUND – OBSTRUCTION, KEEP CLEAR

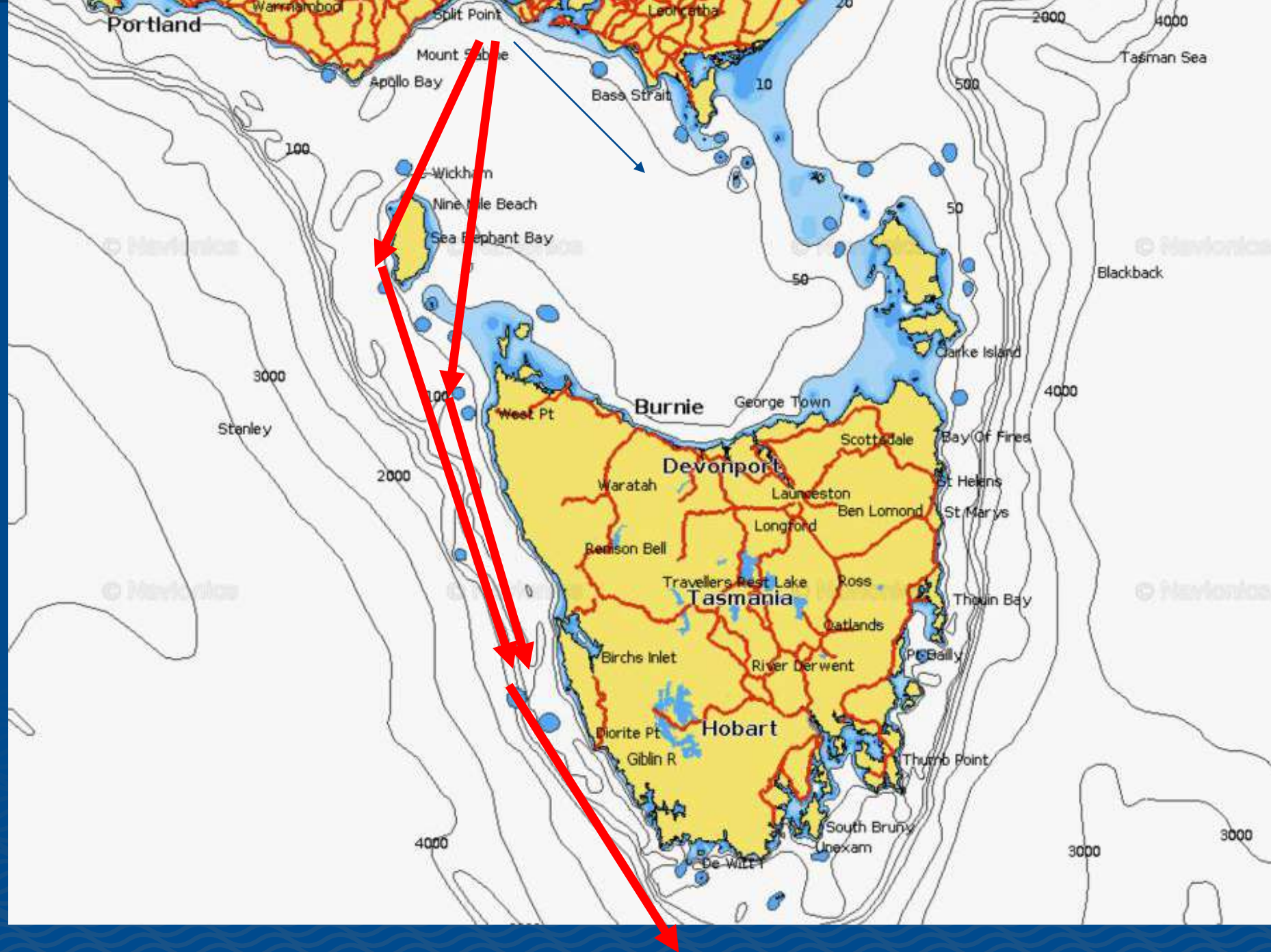


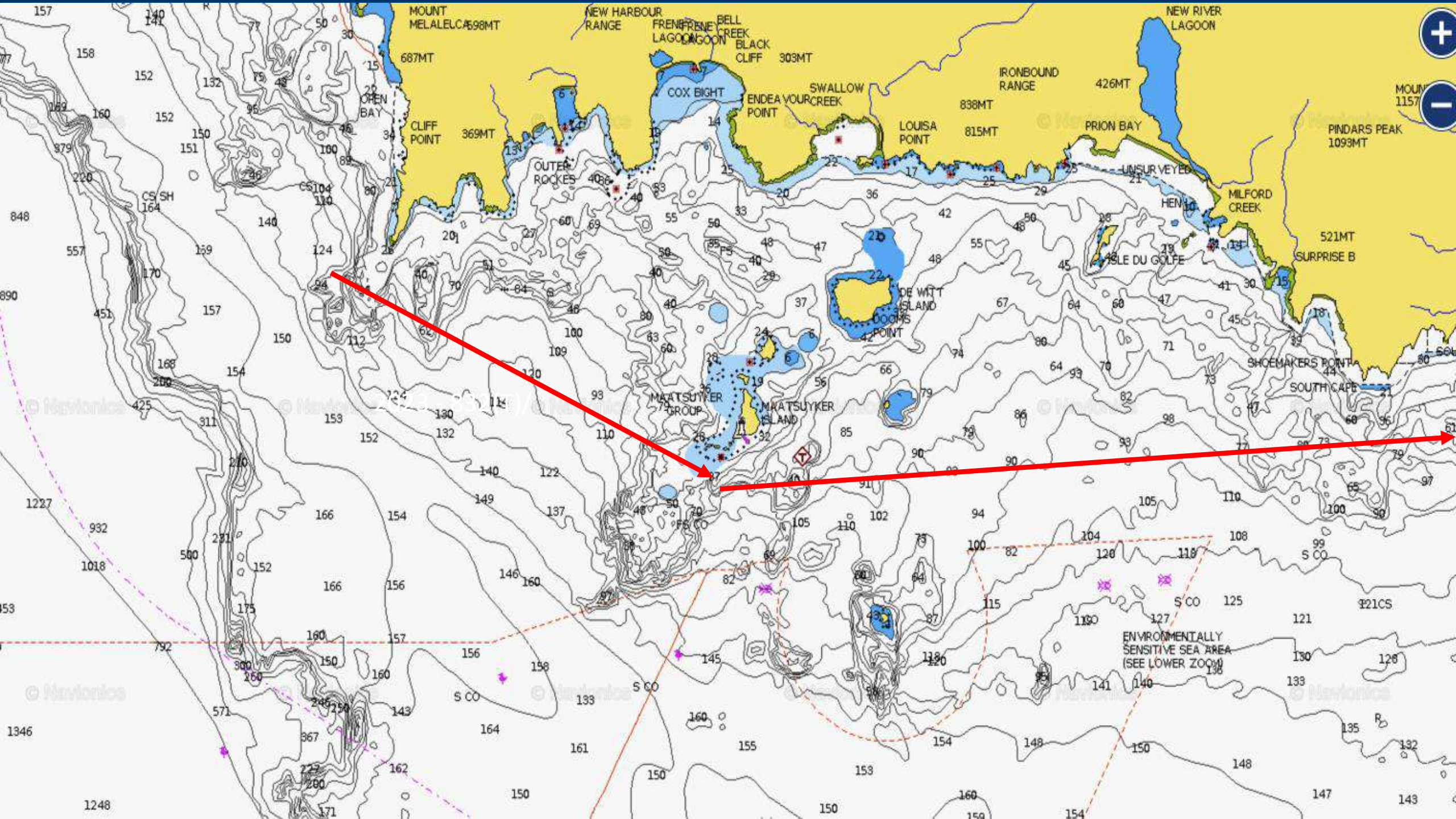
- You shouldn't be anywhere near it
- Again, take a photo of your track on your plotter
- We will be watching AIS
- The penalty for sailing within the bounds of any exclusion zone in Appendix C of the SIs – is DSQ

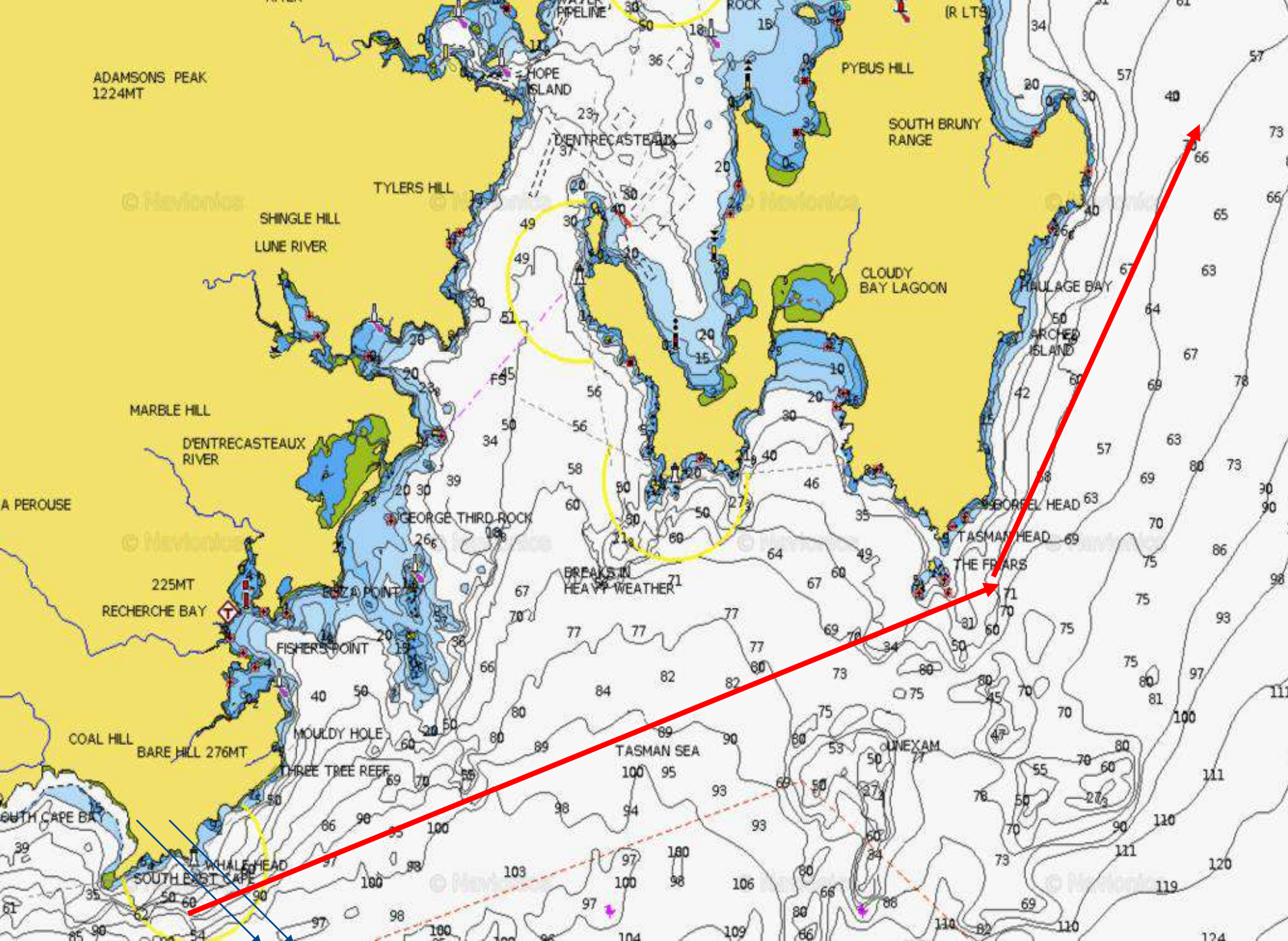
Most boats will race to the Eastern side of King Island

Watch out for significant tidal and current effects between King Island and the mainland (Tassie)!

- Occasional migratory whales have been spotted within the continental shelf depths, so on the racecourse







Final course if heading North, watch out for wind blanket off Bruny Island high cliffs

Note shallow depths (60-80m) so out of the long period waves of the southern ocean – can get steeper sea state



**ORCV**



Note the fish farms are located on the Eastern side of Bruney Island, watch out for the lights if at nighttime as some of the lights are not highly visible

Once entering the Derwent watch out for wind gusts off the hills, especially overnight!



# FINISHING



## D2 Finishing Line

- D2.1. The finishing line will be in the Derwent River between the flag mast on the finishing box on Battery Point (S42° 53.282' E147° 20.339') and a large inflatable yellow pyramid attached to a special mark with a yellow flashing light (5 seconds on, 1 second off), bearing 050°T and approximately 300 metres from the finishing box.
- D2.2. An inner distance mark, a large inflatable buoy, may be positioned approximately on the finish line and when finishing, boats are required to pass this mark to port.
- D2.3. Boats must cross the finishing line from south to north.

## D3 Finishing Procedure

- D3.1. Boats finishing at night are required to illuminate their sail numbers or turn on their spreader lights when approaching the finishing line. The Race Director may request further aids to identification as boats approach the line.
- D3.2. Unless circumstances prevent it, the finishing times of all boats will be taken by the Race Director at the finish, but as a back-up, skippers must record their own finishing GPS times, accurate to 1 second, and inform the Race Director of this time if requested.



# PRESENTATION

31st December 2025 at Derwent Sailing Squadron

Please ensure you wear your race shirt + yellow cap. All welcome

12.30 pm - Combined L2H and M2H buffet (\$20 pp, payable on the day) + drinks at member's rate

2.00 pm - Presentation



# SHARE YOUR EXPERIENCE



**Start** – ORCV will have a photographer at the start.

If you could send a crew shots prior to leaving dock via the WhatsApp group please.

**Backstay Flag** – Please fly your backstay flag at the start

**Media Release** – Scheduled media releases each day including on dock interviews in Hobart, so monitor your phones.

**Battle flags** – At Queenscliff and in Hobart

**Social Media** – Regular Posts (Facebook & Instagram)

**WhatsApp** – send video / photos through, take a crew shot prior to starting. If you are using On Track Meals, we'd love you to share your experience.

Contact us via WhatsApp (Delma 0419388018 or on [media@orcv.org.au](mailto:media@orcv.org.au))

# CREATE MEMORIES



Photo Competition (closes 5pm 2nd Jan)

Share via –

- email [media@orcv.org.au](mailto:media@orcv.org.au)
- WhatsApp (Link has been SMS'ed)
- Tag us
- Facebook @orcv
- Instagram @orcv\_racing
  
- We will have a prize for the best content



2023 Winner - A relaxed skipper on Cadibarra, photo by Igor

# GEAR — PICK UP



## Before you leave today

- Crew Shirts
  - Battle flags
  - Backstay flags
  - Trackers
- 
- Check — Sign — Confirm



# ARRIVAL NOTES



- Please follow the directions of the RIB driver
- You need to take fenders, one long bow line and general mooring lines
- You may be rafted up and if you are asked to move over, please do
- Everyone must depart their moorings by midday on Jan 3rd from Elizabeth Street

When you arrive before you get off or receive your welcome rewards, we have some housekeeping

- Obtain your declarations
- Trackers
- Pass out your yellow caps so we can....
- Take your crew photo

Then you can relax and enjoy being in Hobart





# NOMINATIONS

## The Kevin Behrens Shield

Outstanding Crew Member, awarded to the crew member judged most outstanding in the Race.

Crew or skipper can nominate

- Complete a paper nomination forms
- Entry closes 11am on December 31st

Pick up and drop back to Race Director at ORCV Van



Thanks again to our sponsors – who help make this race happen



**Strait Link**

Discover Tasmania

The Westcoaster (M2H) is supported by the Tasmanian Government through Events Tasmania

# OUR OBJECTIVE — SAFE & ENJOYABLE



## Stay safe

Go easy on the start line, it's a long race

Sail smart – Remember more sail doesn't mean you go faster

***Rule 4 "The responsibility for a boat's decision to participate in a race or to continue racing is hers alone."***

## Please promote the event

Let friends and family know to watch the Tracker via the ORCV web site

Invite them to join you in Hobart too to enjoy the activity.

## Let's all enjoy the event

Respect your fellow crew and other competitors

Respect the volunteers and our hosts,

We are committed to the ORCV Code of Conduct



***SI 16.2 "Skippers are reminded that crew behaviour is both the skipper and all the crew's responsibility to manage, at all times including during any deliveries or pre and post race social events."***

# OUR OBJECTIVE — SAFE & ENJOYABLE



## Stay safe

Go easy on the start line, it's a long race

Be mindful of tides at start (ebb tide for this race)

Sail smart – Remember more sail doesn't mean you go faster

***Rule 4 "The responsibility for a boat's decision to participate in a race or to continue racing is hers alone."***

## Please promote the event

Let friends and family know to watch the Tracker via the ORCV web site

Invite them to join you in Hobart too to enjoy the activity.

## Let's all enjoy the event

Respect your fellow crew and other competitors

Respect the volunteers and our hosts,

We are committed to the ORCV Code of Conduct



***SI 16.2 "Skippers are reminded that crew behaviour is both the skipper and all the crew's responsibility to manage, at all times including during any deliveries or pre and post race social events."***

# OUR OBJECTIVE — SAFE & ENJOYABLE



## Stay safe

Go easy on the start line, it's a long race

Sail smart – Remember more sail doesn't mean you go faster

***Rule 4 "The responsibility for a boat's decision to participate in a race or to continue racing is hers alone."***

## Please promote the event

Let friends and family know to watch the Tracker via the ORCV web site

Invite them to join you in Hobart too to enjoy the activity.

## Let's all enjoy the event

Respect your fellow crew and other competitors

Respect the volunteers and our hosts,

We are committed to the ORCV Code of Conduct



***SI 16.2 "Skippers are reminded that crew behaviour is both the skipper and all the crew's responsibility to manage, at all times including during any deliveries or pre and post race social events."***

# SUSTAINABILITY – SPECIES SHOWCASE



**Handfish**  
Conservation  
Project

**Spotted handfish** are **critically endangered**, with fewer than 3000 individuals remaining. **The Derwent Estuary is the only place on Earth** these fish are found, a truly iconic Tasmanian species.

These handfish are faced with increasing levels of habitat destruction and loss, pollution, impacts associated with invasive species, and climate change. Threats include historical commercial dredge fisheries, boat moorings and coastal development.

Two ways to give the Spotted Handfish a hand

- 1. Don't dump in the Derwent** – Derwent Sailing Squadron have a convenient pump station. Call 03 6223 1977
- 2. Contain your rubbish** – manage your waste responsibility and encourage each other to do the same.



Learn more: [handfish.org.au/](http://handfish.org.au/)

# SUSTAINABILITY – BEFORE THE RACE

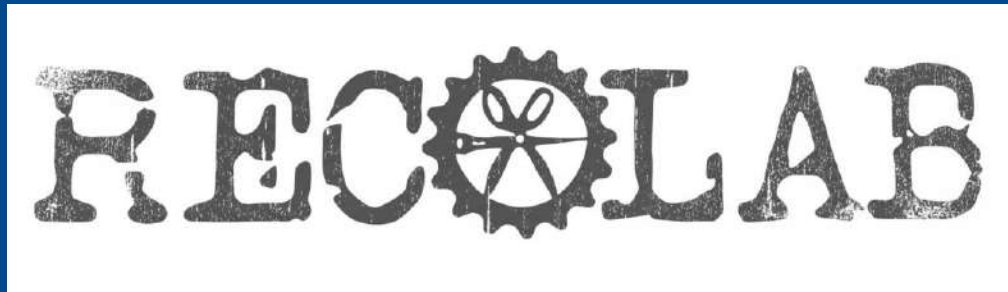


## **Every act makes a different**

- get your crew involved and try one of these

- Use refillable water bottles
- Bring a 'keep cup'
- Adopt reusable food containers or silicone Ziplock bags
- Sort your waste on board to make recycling easier

# SUSTAINABILITY – REDUCE LANDFILL



- Designs bags from old sailcloth
- No village store this year
- Will accept any sails that may be lost during the race
- Call Lyn on 0459 615 513



# HEADING HOME



## Tell us if your plans change

Particularly who is on board

## Keep an eye on each other

Your best Search & rescue asset is your fellow competitor. Monitor VHF16 and AIS

## Message us

On the Race Director phone once you pass through the heads

## Tracker

Keep it on for your trip home, turn it off when you tie up and return it to the ORCV

## Incident Management

There will be minimal ORCV oversight during your trip home, but the ORCV team will be on standby and will assist where we can. If something happens, contact us



# FINALLY ...

- Final Reminders have been published and text link sent to all crew
- Boats will need depart their berths no later than 1500 January 3

## Container in Hobart

- Will be in the carpark at Derwent Sailing Squadron, 23 Marieville Esplanade, Sandy Bay TAS 7005
- The container is locked with an ORCV combination padlock, the code is .....
- Do not ask the DSS for a key as they don't have one!
- Container must be empty **9am on the 2nd January 2026**

## Robin Hewitt Trophy

- For sailors having completed 10+ Westcoasters, let us know now

## Kevin Behrens Shield

- Outstanding Ocean Racer, as voted by skipper & crew -
- **Paper form from Race Director, entry closed 11am on 31st Dec**

## Latest News



# 2025 PRE-RACE BRIEFING



ORCV Melbourne to Hobart Race – 53rd Westcoaster

**ANY QUESTIONS ?**

**KEEP AN EYE ON THE RACE WEBSITE PAGE**

**CHECK FOR SMS COMMUNICATIONS**