



# NOR

CAT-3 COASTAL



# 2025-2026 West Offshore Products Coastal Sprint Races

## Notice of Race



Photo: Dillon Images

Copyright Michael Currie  
[www.michael-currie.com.au](http://www.michael-currie.com.au)

COASTAL  
SPRINT RACES



## Amendments

Number	Changes	Summary of Amendment
1	Appendix C	Minimum Crew Number requirement removed

Key Information		
	Early Bird entry (all three races) closes	23:59 Thursday 11 September 2025
	Entries close	23:59 on the Wednesday before each Race
	Race dates and Warning Signal:	
	Race 1	0610 AEST Saturday 20 September 2025
	Race 2	1040 AEDT Saturday 22 November 2025
	Race 3	0810 AEST Saturday 18 April 2026
	ORCV office phone	0493 102 744
	Race Director phone	0418 396 605

Copyright © Ocean Racing Club of Victoria Inc 2025

### All enquiries to:

Ocean Racing Club of Victoria Inc  
 3 Aquatic Drive  
 ALBERT PARK VIC 3206  
 Australia  
[orcv@orcv.org.au](mailto:orcv@orcv.org.au)

# Contents

1.	Races .....	5
2.	Rules .....	5
3.	Race Categories and Handicap Systems .....	6
4.	Eligibility .....	7
5.	Application for Entry.....	7
6.	Fees .....	8
7.	Scoring.....	9
8.	Trophies .....	9
9.	Changes to Rules and Special Regulation Requirements.....	9
10.	Tracking Devices .....	10
11.	Sustainability.....	11
12.	Event Classification and Advertising .....	11
13.	Trademarks and Copyright.....	11
14.	Media Rights and Restrictions.....	12
15.	Disclaimer .....	12
<b>Appendix A: Stability Requirements .....</b>		<b>13</b>
A1	Resistance to Capsize .....	13
A2	Expired Certification.....	13
A3	Moveable or Variable Ballast.....	13
A4	Documentation.....	13
<b>Appendix B: Boat Eligibility Requirements .....</b>		<b>14</b>
<b>Appendix C: Crew Eligibility Requirements .....</b>		<b>16</b>
<b>Appendix D: Entry Documentation .....</b>		<b>18</b>

## 2025-2026 West Offshore Products Coastal Sprint Races

---

The ORCV's Coastal Sprint Races are each approximately 15 to 35 NM in length, starting at Queenscliff and finishing in the vicinity of Port Phillip Heads.

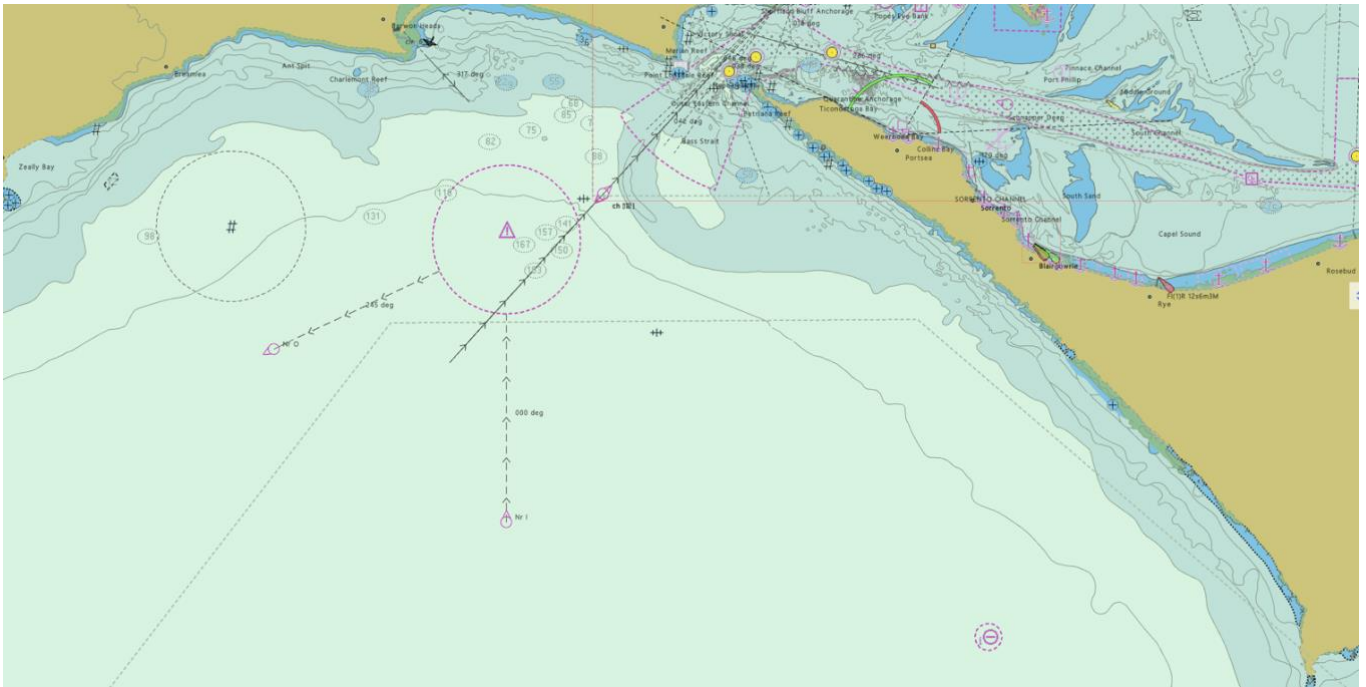
The courses are set in the waters broadly bounded by Drapers Reef, Phillip Island and Split Point. Virtual marks and gates are used to take best advantage of expected race conditions.

The Coastal Sprint Races are designed to enable Melbourne and Geelong based crews to return to their home clubs on Saturday night if required. Crews with more time are encouraged to take the opportunity of an overnight stay at either the Queenscliff Cruising Yacht Club or at the Blairgowrie Yacht Squadron.

Including the Apollo Bay Race, the ORCV program now includes four Category 3 races for those who do not participate in longer events. These races also provide a great development path for those who wish to enter Category 1 and 2 offshore racing and for new double handed offshore crews.

The Coastal Sprint Races are designated races in the ORCV Coastal Championship and the ORCV Double Handed Offshore Championship.

### Coastal Sprint Course Area



The 2025-2026 ORCV West Offshore Products Coastal Sprint Races will be conducted from a start at the entrance to Port Phillip on the waters of Bass Strait. Owners of eligible boats are invited to enter one or more Races under the conditions of this Notice of Race. The Races are organised and conducted by the Ocean Racing Club of Victoria Inc (ORCV).

## 1. Races

1.1. The warning signal for each Race will be displayed as detailed below.

Race	Start Date	Warning Signal	Start Time	Zone
<b>Coastal Sprint 1</b>	Saturday 20 September 2025	0610	0615	AEST
<b>Coastal Sprint 2</b>	Saturday 22 November 2025	1040	1045	AEDT
<b>Coastal Sprint 3</b>	Saturday 18 April 2026	0810	0815	AEST

1.2. These are Category 3 races, each conducted from a start off Queenscliff, in the area broadly defined by Drapers Reef, Phillip Island and Split Point and finishing in the vicinity of Port Phillip Heads.

1.3. The Coastal Sprint Races are part of the ORCV Coastal Championship and Double Handed Championship and are open to open to all boats in the Race Categories defined in Condition 3.

1.4. The details of the course for each Race including any marks will be in the Sailing Instructions for the Races.

1.5. An alternative course may be used at the discretion of the Race Director.

## 2. Rules

2.1. The Races will be governed by the current versions of:

- The 2025-2028 Racing Rules of Sailing (RRS) of Australian Sailing (AS),
  - The Prescriptions and Special Regulations of Australian Sailing (AS),
  - Where a boat is entered under AMS, the Rules and Regulations of the Australian Measurement System (AMS),
  - Where a boat is entered under ORC, the Rules and Regulations of the Offshore Rating Congress (ORC),
  - Where a boat is entered under OMR, the Rules and Regulations of the Offshore Multihull Rating (OMR) Specification developed by the Multihull Yacht Club Queensland,
  - The International Regulations for Preventing Collisions at Sea, 1972 (ColRegs),
- except as amended by this Notice of Race and the Sailing Instructions for the Races.

- 2.2. The ORCV reserves the right to amend this Notice of Race. Any amendments will be published on the ORCV website ([www.orcv.org.au](http://www.orcv.org.au)) and any entrants at the time of any such amendment will be notified by SMS.
- 2.3. By entering one or more races, the owner of a boat agrees that this Notice of Race (including any amendments) and the entry form, the Rules and Regulations referred to in this Condition 2 and the Sailing Instructions must be complied with by the boat and by the owner.
- 2.4. The Sailing Instructions will be issued through the ORCV website ([www.orcv.org.au](http://www.orcv.org.au)).

## 3. Race Categories and Handicap Systems

- 3.1. The Races will be conducted with the following Race Categories and Handicap Systems:

Race Category	PHS	AMS	ORC	OMR
Monohull Including 4+autohelm	Yes	Yes	Yes	No
Double Handed	Yes	No	No	No
Cruising – Monohull only	Yes	No	No	No
Multihull including 4+autohelm	Yes	No	No	Yes

- 3.2. Boats in the Monohull Race Category may race fully crewed, “4+autohelm” or Double Handed.
- 3.3. Boats in the Multihull Race Category may race fully crewed or “4+autohelm”.
- 3.4. Boats in the Double Handed Race Category must have two crew. They are also automatically entered and scored in the Monohull Race Category in all eligible Handicap Systems.
- 3.5. The Cruising Race Category is for monohulls only.
- 3.6. Boats in the Multihull Race Category will be entered into the PHS and OMR Handicap Systems if they meet the requirements of Appendix B: Boat Eligibility Requirements.
- 3.7. The Race Committee may split the Monohull Race Category into multiple divisions having regard to the number of entries and the performance characteristics of competitors.
- 3.8. Boats entering ORC must hold either an ORCi Rating Certificate or an Endorsed ORCc Rating Certificate based on data submitted to Yachting Australia by an accredited measurer. The ORC All Purpose Handicap System will be used.
- 3.9. Non-Spinnaker and Two-Handed rating certificates are not used for the Handicap Systems used for scoring.
- 3.10. Boats entered in the AMS or ORC Handicap System of the Monohull Race Category must have a valid rating certificate which includes a spinnaker with a measured area of at least 130% of the area of the boat’s fore triangle where the fore triangle is defined as  $0.5 \cdot FL \cdot J$  measured in accordance with the AMS rules.
- 3.11. The Race Committee reserves the right to cancel any Race Category or Division with fewer than five entries.

## 4. Eligibility

- 4.1. The Races are open to boats of a thoroughly seaworthy nature, which are entered by a member of a yacht club affiliated with Australian Sailing.
- 4.2. A multihull boat must have a minimum LWL as defined in the AS Special Regulations not less than 12.0 metres and must comply with the requirements of Condition 9.2.
- 4.3. Each boat must comply with the eligibility requirements listed in Appendix A: Stability Requirements
- 4.4. Each boat must comply with the eligibility requirements listed in Appendix B: Boat Eligibility Requirements.
- 4.5. The ORCV may require remeasurement of any boat prior to the boat racing.
- 4.6. The crew of each boat must meet the eligibility requirements listed in Appendix C: Crew Eligibility Requirements.
- 4.7. A decision of the ORCV or the Race Committee as to any matter under this Condition 4, including as to whether a boat and the crew meet the eligibility criteria for entry, is final and binding and will not be grounds for a request for redress.
- 4.8. All safety equipment must be on board and available for inspection. On request by the Race Committee, boats must be made available for spot inspection to verify safety regulation compliance. Spot checks may be carried out prior to the warning signal or after a boat finishes.
- 4.9. For each race a boat must submit a crew declaration via the TopYacht online Entry System before the Warning Signal. The crew declaration must confirm that the boat intends to race and must include required details of persons on board as follows: full name, phone number, AS Number, and the full name and number of an emergency contact person who is not participating in the Race.

## 5. Application for Entry

- 5.1. Application for entry must be made on the TopYacht online Entry System (TES) at [www.orcv.org.au](http://www.orcv.org.au).
- 5.2. To enter all 3 Races, a completed application for entry and payment of the 3 races entry fee must be received by 2359 on Wednesday 17 September 2025.
- 5.3. To enter an individual Race, a completed application for entry and payment of the race entry fee must be received by 2359 on the Wednesday before each Race.
- 5.4. The ORCV may, at its sole discretion, accept entries after that date but will not normally do so where a boat was in a position to enter by the due date.
- 5.5. To qualify for the Early Bird Race Entry Fee (available only when entering all 3 races), a completed application for entry and fee payment must be received by 2359 Thursday 11 September 2025.
- 5.6. Each boat must submit to the ORCV, no later than 2359 on the Wednesday before the first Race it enters, the information listed in Appendix D Entry Documentation, together with a crew list for each Race entered. For boats entered in more than one race, the crew list and skipper's declaration must be updated no later than 2359 on the Wednesday before each race.

- 5.7. Privacy Note: Personal information about crew members is contained in crew lists. That information is obtained for use in search and rescue situations and for media purposes. The information may be given to search and rescue authorities and organisations, the Water Police, volunteer coastal stations and media representatives and may be passed on by them to other organisations. A condition of entry is that crew members are to be informed of this and advised that they may obtain access to the information held about them by contacting the ORCV.
- 5.8. The ORCV is not obliged to accept an application for entry.
- 5.9. Documentation supplied to or held by the ORCV under this Notice of Race (other than crew lists) must not be changed (except to correct errors or after protest) after 2359 on the Wednesday before each Race that a boat enters.
- 5.10. A boat's rating certificate must not be changed after 2359 on the Wednesday before each Race, except as a result of a rating protest or to correct a rating office error.
- 5.11. A boat's crew list in TES may be changed to correct errors, and to reflect late crew changes. After any change to a crew list, the boat must still satisfy the general requirements of Appendix C: Crew Eligibility Requirements. Any subsequent changes to the crew or details of any crew member must be notified by email ([race.director@orcv.org.au](mailto:race.director@orcv.org.au)) or SMS (0418 396 605) to the Race Director phone.

## 6. Fees

- 6.1. The race entry fee must be paid using TES. The entry fee includes Australian Goods and Services Tax. A tax invoice will be issued on request.
- 6.2. The race entry fee is for the Race or Races entered and all Handicap Systems for which a yacht is eligible.
- 6.3. No additional fees apply where an eligible boat enters the Double Handed Category.
- 6.4. Race entry fees are as follows:

<b>Three Races Early Bird Entry Fee (on or before 9 Sep 2025)</b>	\$350
<b>Three Races Entry Fee (from 12 Sep 2025)</b>	\$400
<b>Individual Race Entry Fee</b>	\$150

- 6.5. ORCV members receive a 15% discount on the race entry fee(s).
- 6.6. A boat will not be considered a valid entry until all race entry fees are paid.
- 6.7. A crew fee of \$65 is payable, for each Race, for each crew member who is not a member of the ORCV and will be invoiced after each Race.
- 6.8. Crew who do not have an active Australian Sailing Number (ASN) are also required to purchase a Coastal Pass membership via the ORCV website (<https://www.orcv.org.au/club/crew-and-passes>) at an additional cost of \$30. The crew fee is in addition to the cost of the Coastal Pass.

- 6.9. Unless the ORCV cancels all of the Coastal Sprint Races, there are no refunds on entry fees. To enable a refund payment in this situation, please email the ORCV office ([orcv@orcv.org.au](mailto:orcv@orcv.org.au)) with BSB and account number details for direct crediting.

## 7. Scoring

- 7.1. The scoring system will not be subject to protest or dispute.
- 7.2. Prorated positions may be used to determine a result for any Race in the event that the Race is shortened.

## 8. Trophies

- 8.1. Perpetual Trophies are not awarded for these Races.
- 8.2. Mementos are presented to competitors for the following achievements, subject to the number of starters qualifications set out below:
- Monohull Line Honours: 1<sup>st</sup> monohull to cross the finish line.
  - Multihull Line Honours: 1<sup>st</sup> multihull to cross the finish line
  - Monohull: 1<sup>st</sup>, 2<sup>nd</sup> and 3<sup>rd</sup> placegetters on corrected time within AMS, ORC and PHS. This includes a memento for each division and overall (Combined divisions)
  - Double Handed: 1<sup>st</sup>, 2<sup>nd</sup> and 3<sup>rd</sup> placegetters on corrected time for PHS
  - Cruising – Monohull: 1<sup>st</sup> placegetter on corrected time for PHS
  - Multihull: 1<sup>st</sup>, 2<sup>nd</sup> and 3<sup>rd</sup> placegetters on corrected time for OMR and PHS.
- 8.3. All mementos are awarded subject to there being sufficient starters in the particular Handicap System and Division as follows:
- Fewer than 7 starters: no 3<sup>rd</sup> place.
  - Fewer than 5 starters: no 2<sup>nd</sup> or 3<sup>rd</sup> places.
  - Fewer than 3 starters: there is no Race for that Handicap System and/or Division and no mementos are awarded. Double Handed and Multihull Race Categories mementos for placegetters are not subject to this Condition.
- 8.4. Results will be published on the ORCV website as soon as possible after each Race.
- 8.5. The presentation of mementos will be at the next ORCV Annual Awards Event at a date, time and location to be announced. Mementos may be in the form of a single memento for each boat, listing all eligible achievements won during the season.

## 9. Changes to Rules and Special Regulation Requirements

### 9.1. Changes/Clarifications to the Racing Rules of Sailing

**RRS 51:** A boat with movable ballast or variable ballast (within the meaning of those terms in the AS Special Regulations) may move that ballast for the purpose of changing trim or stability to the extent permitted by their stability rating.

**RRS 52:** The rule will be modified:

- To allow self-steering equipment to be used by boats sailing in the Double Handed Race Category and, in the Monohull, and Multihull Race Categories with 4+autohelm.

- To allow the adjustment of movable water ballast or canting keels on any boat and the use of stored power to do so.
- To allow the use of stored power for sail handling and sail trimming on any boat.

**RRS 55:** Fixed and retractable spinnaker poles and bowsprits will be permitted for the purpose of setting asymmetrical spinnakers.

**RRS 61.3:** There is no time limit on protests by the Race Committee or the Protest Committee.

**RRS 78.2:** Valid rating/class certificates must be produced by the due date specified in this Notice of Race.

## 9.2. Changes to the Australian Sailing Category 3 Special Regulations

- 9.2.1. Boats equipped with liquid fuel propulsion engines must start each Race with not less than the recommended fuel specified in AS Special Regulations 3.24.5(c) for a Category 3 event. (required fuel in litres = LWL(metres)/0.4).
- 9.2.2. Boats equipped with electric propulsion motors, must by the use of batteries and generating capacity, start the Race with sufficient power to operate under motor with an effective range of 60 NM.
- 9.2.3. Multihull entries in the Race must:
- Comply with the hull construction requirements specified in 3.03.2 of the World Sailing Special Regulations noting that the ORCV will accept a signed statement from an appropriate naval architect or person familiar with standards that the boat meets the requirements of ISO 12215 or the ABS Guide for Category A events.
- 9.2.4. Demonstrate compliance with the Design Category A Multihull Stability requirements of ISO 12217 – 2:2015 clauses 7.8, 7.9 and 7.10. ORCV strongly recommend all crew are equipped with a Personal Locator Beacon (PLB) that is registered with AMSA. All details must be provided on the TopYacht Entry System for each crew person.
- 9.2.5. Double Handed Race Category boats and 4+autohelm must be fitted with a fully operational autohelm. The autohelm controller unit output must only act on the rudder rotation and no other part of the boat.

## 9.3. Penalties

- 9.3.1. **RRS 44.2:** Two Turns Penalty will apply for breaking a rule of RRS, Part 2 in Port Phillip. Multihulls are only required to take a One Turn Penalty.
- 9.3.2. **RRS A5:** The Protest Committee may apply a discretionary scoring or time penalty in lieu of disqualification for an infringement of a Rule.
- 9.3.3. Any scoring penalties will be applied in accordance with the Sailing Instructions.

## 10. Tracking Devices

- 10.1. AIS transmitters must be in operation at all times when racing. This transmission must include the boat's name and MMSI.

## 11. Sustainability

The ORCV is dedicated to promoting and upholding the principles of environmental stewardship in ocean racing. The event will be conducted in accordance with the Clean Regattas framework established by Sailors for the Sea. It is our intent to implement as many best practices as possible throughout the duration of each race. Competitors are strongly encouraged to conscientiously consider their environmental impact both at sea and upon arrival at the destination by:

- Eliminating single-use plastic bottles – opt for refillable and store water using jerries or tanks on board.
- Containing and sorting rubbish, disposing appropriately at destinations or upon arrival home (e.g., recycling and organics, and reduce the amount sent to landfill).
- Picking up litter, especially in marinas or around clubs.
- Provisioning and storing food to reduce food and packaging waste, eg using reusable storage containers.
- Preventing oil, chemicals and microplastic pollution going to sea by inspecting and maintaining a clean bilge.

## 12. Event Classification and Advertising

- 12.1. Advertising on a boat must comply with the requirements of WS Regulation 20 (WS Advertising Code) for Category C.
- 12.2. The ORCV must be advised of all advertising that a boat intends to carry. The ORCV must be advised of all changes to that advertising.
- 12.3. The ORCV may decline to accept an application for entry of a boat which, in its opinion, is carrying advertising which conflicts with Government regulations. If in doubt, the ORCV should be consulted as soon as practicable.

## 13. Trademarks and Copyright

- 13.1. “Coastal Sprint Races” is a trademark of the Ocean Racing Club of Victoria, Inc and the use of the trademark is absolutely restricted and limited to use by or with the consent of the ORCV.
- 13.2. This document is Copyright © Ocean Racing Club of Victoria Inc 2025-2026. All enquiries should be directed to:

orcv@orcv.org.au

Ocean Racing Club of Victoria Inc  
3 Aquatic Drive  
ALBERT PARK VIC 3206  
Australia

## 14. Media Rights and Restrictions

- 14.1. It is a condition of entry that the owner of the boat and all crew members:
- Acknowledge that the ORCV owns all media rights relating to the West Offshore Products Coastal Sprint Races and may exercise those rights as it sees fit.
  - Grant the ORCV the unconditional, perpetual right and authority to publish and broadcast anywhere in the world, for any purpose and in any media, the names, images and biographical information relating to the crew and photographs, video footage and audio recordings taken of the boat and the crew prior to, during and after each Race.
- 14.2. Crew members of boats may, prior to, during and after each Race, speak or provide material to any media representatives accredited by the ORCV, regarding each Race and the prospects, performance or strategy of boats entered or participating in the Race, subject to any comments and material not undermining or interfering with, or having a detrimental impact on, the ORCV, ORCV volunteers, any sponsor and their officers and employees or members of any Protest Committee. This approval may be revoked by the ORCV in respect of a boat or media representative at any time.
- 14.3. Entrants acknowledge and accept the media restrictions referred to in this section by completing the entry form.
- 14.4. Any breach of these conditions may, at the discretion of the ORCV or the Race Committee, lead to the rejection of an entry, the cancellation of an entry or the disqualification of a boat (refer RRS 76.1). This does not limit the right of the ORCV to take any other action it sees fit to enforce compliance with these conditions.

## 15. Disclaimer

- 15.1. All those taking part in each Race do so at their own risk and responsibility. Crew acknowledge this and, by having their names entered on the crew list, release the ORCV and its respective officers, employees, volunteers and members, from all liability.
- 15.2. Specific attention is drawn to RRS Fundamental Rule 3, which states:  
*“The responsibility for a boat’s decision to participate in a race or to continue racing is hers alone.”*

# Appendix A: Stability Requirements

The requirements specified in this Appendix apply to all boats intending to enter, regardless of the Race Category in which they intend to enter.

## A1 Resistance to Capsize

A **monohull** boat must provide evidence as follows to demonstrate that it achieves:

- An ORCi Stability Index of 103 or greater for the configuration in which the boat proposes to race; or
- An IRC SSS Base Value of 16 or greater for the configuration in which the boat proposes to race; or
- An ISO 12217-2 Design Category A or B; or
- A Screening Value (SV) of 10 or less subject to AS Special Regulations Part 1 Appendix B paragraph B.5.1.; or
- A Righting Moment Index (RMI) of 1.4 or greater.

A multihull boat must provide evidence that it complies with the multihull stability requirements set out in ISO 12217 – 2: 2015 clauses 7.8, 7.9 and 7.10.

## A2 Expired Certification

As evidence of resistance to capsizing, a boat without a current valid ORCi or IRC Certificate but with a previously valid certificate may supply the boat's most recent previously valid certificate with a Stability Index or SSS Base Value with a satisfactory margin above the stability requirement for Race Category 3 events for the configuration in which the boat proposes to race, accompanied by a completed Stability Declaration in a format supplied by or acceptable to the ORCV.

## A3 Moveable or Variable Ballast

A boat with moveable or variable ballast must provide evidence that she achieves not less than a Knockdown Recovery Factor of 0.8 under International Standard ISO 12217-2, calculated in accordance with ISO 12217-2 paragraph 6.4.4 with the lesser of  $FKR_{90}$  and  $FKR_{-90}$  used. AS Special Regulations Appendix B 7.2.2 will apply.

## A4 Documentation

Competitors found to be falsifying documentation, deliberately invalidating certificates or otherwise misleading the Race Committee regarding stability of their boat are subject to action under RRS 69.1. If found guilty the penalty could include disqualification. The incident will also be reported to Australian Sailing.

A determination by the ORCV or the Race Committee as to the suitability of supplied documentation in demonstrating a boat's compliance with the stability requirements, as to whether there is a satisfactory margin as required by this Appendix or as to a boat's compliance with the stability requirements is final and binding.

### Appendix B: Boat Eligibility Requirements

Boats must comply with the requirements specified in this Appendix to be considered eligible for entry to any Race.

Check	Category	Requirement
✓	<b>General</b>	<p>A monohull boat must be built in accordance with the AS Special Regulations Part 1, Section 3.03 and Appendix C as applicable.</p> <p>A multihull boat must be built in accordance with the hull construction requirements specified in 3.03.2 of the World Sailing Special Regulations.</p> <p>The Safety Regulations are those of Australian Sailing Special Regulations, Part 1, Category 3 except as modified in this Notice of Race.</p>
	<b>Insurance</b>	<p>The owner of a boat entered in any Race must hold a marine legal liability insurance policy with respect to the boat, current when racing, with a sum insured of not less than A\$10 million. The insurance policy must state that the boat is covered for each Race or that it is covered for yacht races over 35 NM in length.</p>
	<b>AMS</b>	<p>A boat may only be entered in AMS if the boat:</p> <ul style="list-style-type: none"> <li>— Has a current, valid AMS Certificate issued by YRSA Inc,</li> <li>— Satisfies, if any, the requirements of Condition 3,</li> <li>— Complies with all the current AMS Rules and Regulations, save to the extent they are specifically amended or excluded in this Notice of Race or the Sailing Instructions (refer RRS 78.1).</li> </ul>
	<b>ORC</b>	<p>A boat may only be entered in ORC if the boat:</p> <ul style="list-style-type: none"> <li>— Has a current, valid endorsed ORCi or ORCc Certificate,</li> <li>— Satisfies, if any, the requirements of Condition 3,</li> <li>— Complies with all the current ORC Rules and Regulations, save to the extent they are specifically amended or excluded in this Notice of Race or the Sailing Instructions (refer RRS 78.1)</li> </ul>
	<b>OMR</b>	<p>A multihull yacht may only be entered in OMR if the boat:</p> <ul style="list-style-type: none"> <li>— Has a current, valid endorsed OMR Certificate,</li> <li>— Satisfies, if any, the requirements of Condition 3.</li> </ul>

Check ✓	Category	Requirement
	<b>Equipment Audit</b>	<p>Each boat must have a signed Cat 3 (or higher) Special Regulations Equipment Audit Form following inspection no more than 12 months from the race start date by an AS Accredited National Equipment Auditor.</p> <ul style="list-style-type: none"> <li>— In addition, a signed copy of the Cat 3 Pre-Race Equipment Checklist and Declaration Form (confirming the safety equipment on board at the time of the Race) must be on board and available for inspection by ORCV upon request.</li> <li>— Guidance and forms can be found at <a href="https://www.orcv.org.au/sailing/compdec">https://www.orcv.org.au/sailing/compdec</a></li> </ul>
	<b>Radio</b>	<p>Each competing boat must:</p> <ul style="list-style-type: none"> <li>— Carry a permanently installed VHF transceiver with channels 12, 16, 67, 71, 73 and 82.</li> <li>— Have continuous monitoring capability for VHF Channel 16 by a suitable method such as dual watch, scanning or multiple radios.</li> </ul>
	<b>Charts</b>	<p>The following charts in electronic or paper form must be carried by competing boats.</p> <ul style="list-style-type: none"> <li>— AUS 144 Australia South Coast - Victoria - The Rip</li> <li>— AUS 788 Australia South Coast - Victoria - Cape Otway to Cape Schanck</li> </ul>

### Appendix C: Crew Eligibility Requirements

Crew must comply with the requirements specified in this Appendix to be considered eligible for entry to any Race.

Check ✓	Category	Requirement
	<b>Membership</b>	All persons sailing on competing boats must be members of a AS-affiliated club. AS membership numbers must be included on the online TopYacht crew list. Crew with no AS membership must obtain a Coastal Pass from <a href="https://www.orcv.org.au/club/crew-and-passes">https://www.orcv.org.au/club/crew-and-passes</a> .
	<b>Age</b>	The minimum age of all crew is 16 years, with a majority of the crew being of a minimum age of 18 years. Crew aged 16 or 17 years must provide evidence to the Race Committee demonstrating past sailing experience, provide parental consent to participate in each Race and must hold a current AS SSSC qualification. The Race Committee may, at its absolute discretion, refuse to allow any crew member aged between 16 and 17 years of age to participate in any Race  For the Double Handed Race Category, the minimum age is 18.
	<b>Experience</b>	In accordance with AS Special Regulation 2.04, at least 2 of the crew including the skipper and/or the person in charge must have sufficient experience, declared online via the TopYacht entry system. ( <a href="https://topyacht.com.au/myty/mytyLogin.php">https://topyacht.com.au/myty/mytyLogin.php</a> )
	<b>Training</b>	It is recommended that at least 2 of the crew on a boat, including the person in charge have completed an Australian Sailing Safety and Sea Survival Course (SSSC) or an ORCV-approved equivalent. The expiry date of SSSC or equivalent certificates must be included in each crew member's TopYacht profile.  It is recommended that the skipper or sailing master have a recognised Australian Sailing certificate (or equivalent) of at least an Offshore Skipper certification.
	<b>First Aid</b>	It is recommended that at least one crew member on a boat must hold a current HLT AID011 Provide First Aid Certificate or equivalent qualification or be a practising medical practitioner. The expiry date of First Aid or equivalent certificates must be included in each crew member's TopYacht profile.
	<b>Radio</b>	At least one crew member must be radio qualified. That is, hold a Short-Range Operator Certificate of Proficiency (SROCP) or higher qualification

Check	Category	Requirement
✓		issued by a relevant authority. Licence details must be included as part of each crew members TopYacht profile.
	<b>Double Handed</b>	For the Double Handed Race Category, both crew members must be at least 18 years of age and be radio qualified. Double handed crew must always wear a life jacket when on deck.

### Appendix D: Entry Documentation

The documentation listed below must be uploaded in the boat documents section of TopYacht by **2359** on the date specified in the application for entry to complete the boat’s entry to any Race.

Check	Documentation	Notes
✓		
	Crew List (Online), correctly and fully completed with all associated personal details. Boats are responsible for accuracy and currency.	Updated using the online “TopYacht entry system” (TES)
	A completed Category 3 (or higher) Special Regulations Equipment Audit form.	Uploaded using TES
	Insurance Policy Certificate of Currency	Uploaded using TES
	Evidence of Stability (see Appendix A Stability Requirements). If relying on a Screening Value, please submit the calculation along with evidence to support the length and weight used.	Uploaded using TES
	Colour photograph of the boat under sail suitable for search and rescue purposes. This must be a copyright free digital photograph of a size not less than 6cm by 6cm with a resolution not less than 75 DPI.	Uploaded using TES
	Cat 3 or higher Stability Declaration (in the form supplied by the ORCV) that no changes have been made to the boat since the issue of the above Evidence of Stability	Uploaded using TES
	Skipper’s Race Entry Compliance Declaration (in the form supplied by ORCV). To be filled out, signed and dated.	Uploaded using TES