



## 2025 ORCV DYSC Marine Supplies Winter & Novice Return Series

**13 August 2025**

### **NOTICE TO COMPETITORS No.8 – Sailing Instructions amendments and areas to keep clear**

1. The following amendments have been made to the Sailing Instructions, and the document has been re-issued as V3:

The changes made are:

Appendix C3 Course Winter Series – Destination Race Blairgowrie: Delete South Channels marks 25, 23, 21

Instruction 4 Class Flag amended to: The Races may have the following Race Categories with the following Class Flags or a combined ORCV Burgee

2. The following areas are obstructions and must be kept well clear:

#### **Safety Beach Mussel Farm**

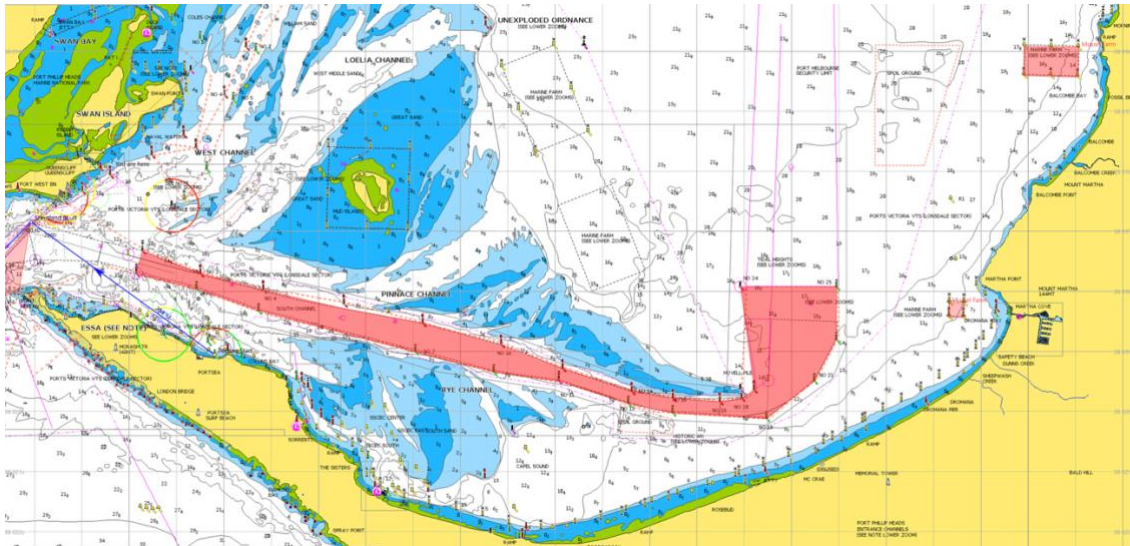
Located approximately 1500 metres west of Safety Beach, this mussel farm is marked by four yellow clearance or special purpose buoys. The approximate location is in the vicinity of **38°18.5'S, 145°00.5'E**. This is shown on **AUS Chart 143**. The area is clearly visible on most electronic and paper charts. Entry is prohibited.

#### **Mount Martha Mussel Farm**

Situated off the Mount Martha foreshore, west of the Mornington–Mount Martha coastal reserve, this farm is similarly marked by four yellow clearance/special purpose buoys. Approximate coordinates: **38°17.5'S, 145°00.7'E**. Visible on **AUS Chart 143** or equivalent digital charts.

#### **South Channel (Commercial Shipping Channel)**

The South Channel is the primary commercial shipping route in southern Port Phillip Bay. It is marked by a series of **numbered lateral navigation piles** and **buoys** and clearly designated on **AUS Chart 155** and most electronic systems. Boats shall not enter this channel at any time during racing.



A new version of the Notice of Race has been published here: <https://www.orcv.org.au/winter-series/race-documents>

ORCV Sail Captain  
David Schuller  
13/08/2025

For further information or clarification, please contact the ORCV office on 0493 102 744 or [orcv@orcv.org.au](mailto:orcv@orcv.org.au)