



Workshop 5: Overnight debrief and Coastal Sail planning



Introductions



Tonight's Presenter Team

- Simon Dryden
- Paul Roberts
- Justin Brennan



Beyond The Bay

Welcome West Offshore



Long time sponsor and promoter of ORCV and offshore sailing

Specialists in



Life Rafts



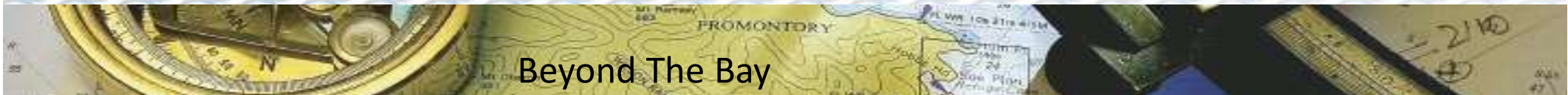
Life Jackets



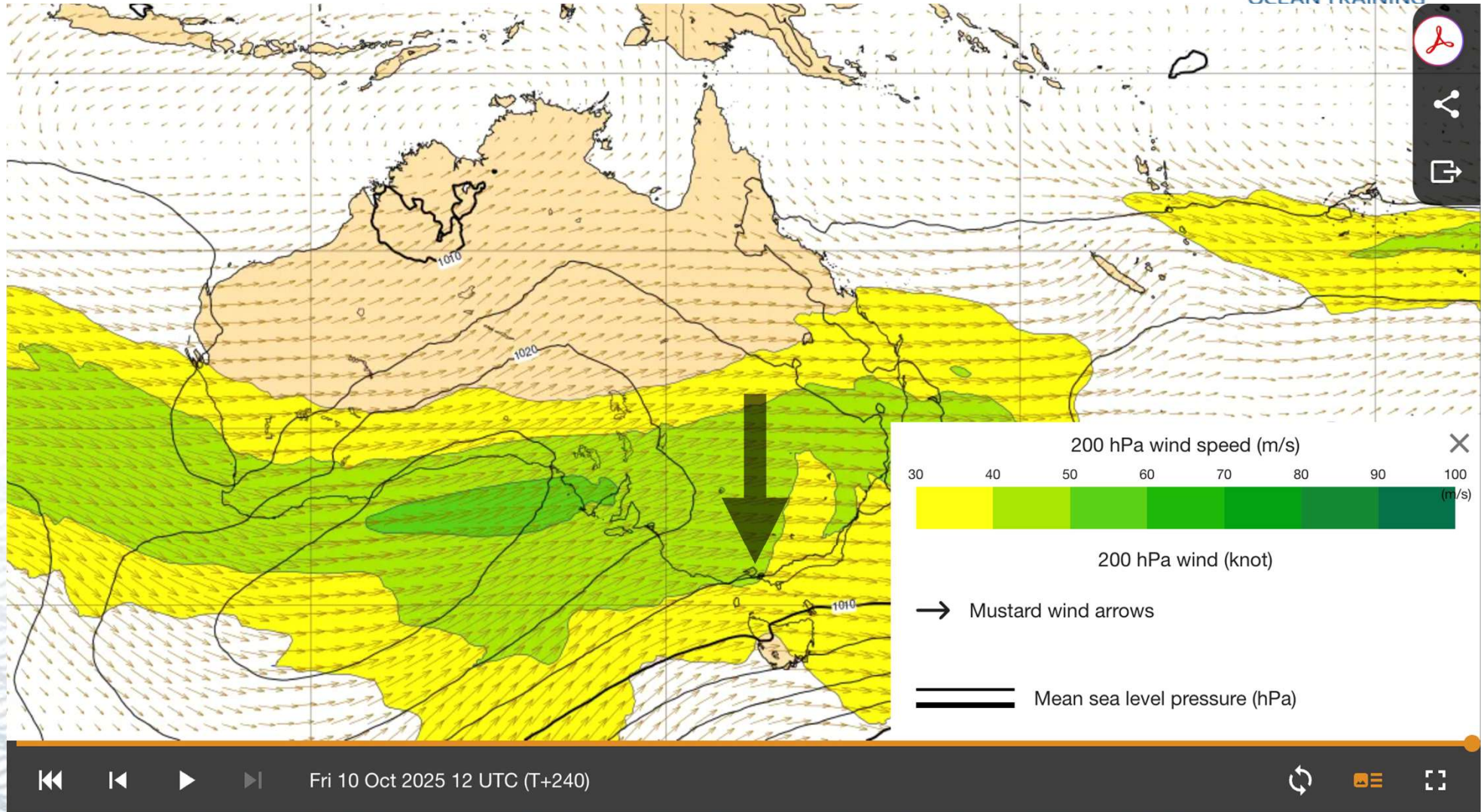
EPIRBs



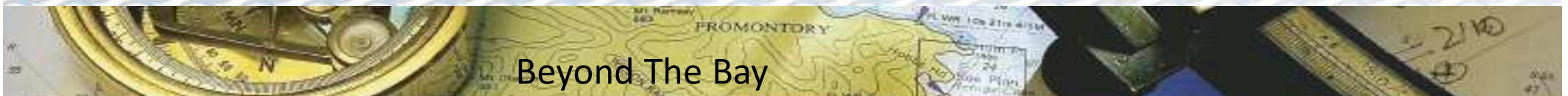
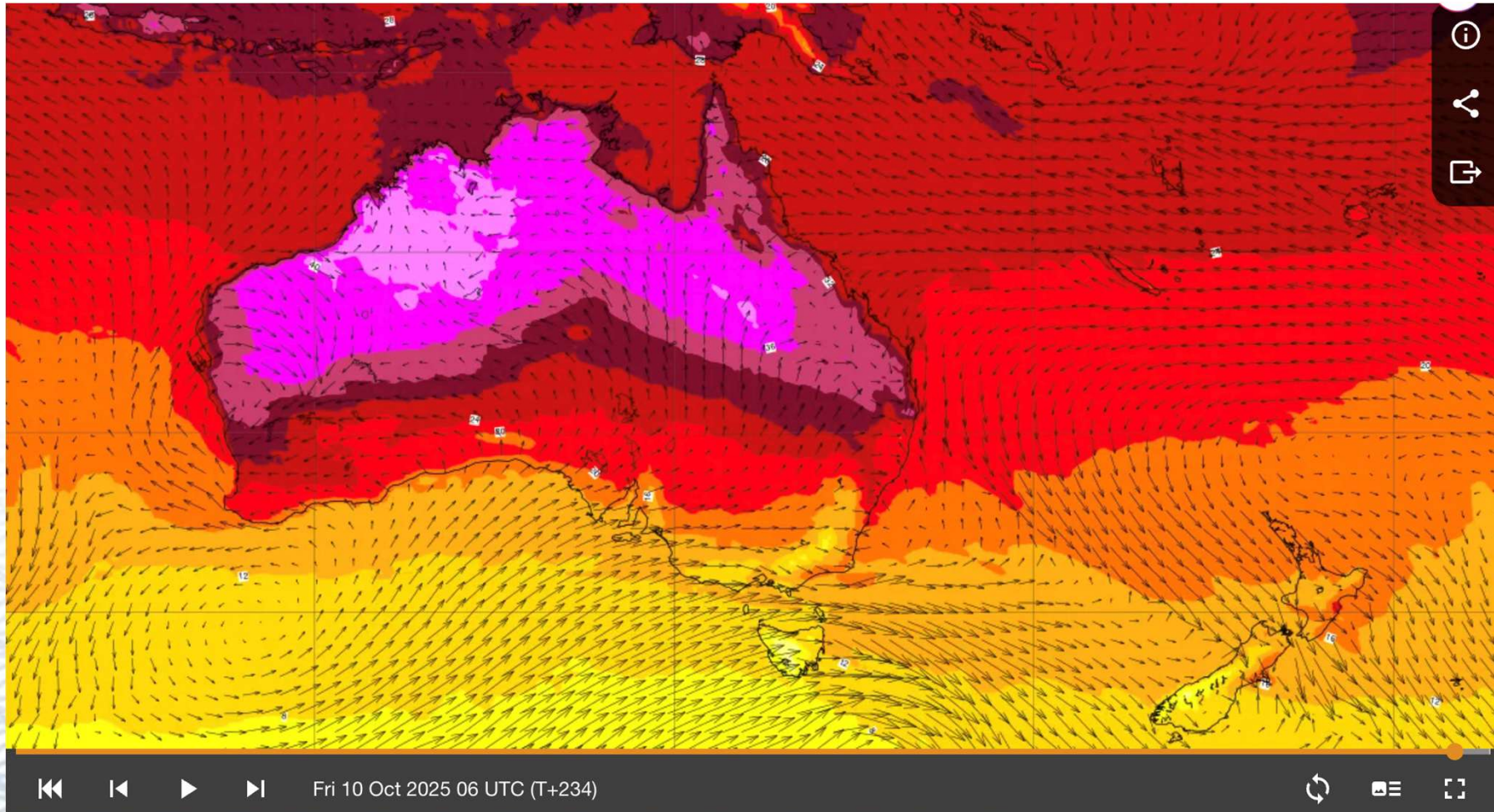
Services



Beyond The Bay



30m Surface winds and Temperature



Beyond The Bay

Jet Stream to Surface Wind (200 hPa to surface):



200 hPa Wind

100 knots

150 knots

200 knots

Possible Surface Wind

~20–40 knots (gusts)

~40–70 knots (gusts)

~60–90 knots (gusts)



Beyond The Bay

Tonight's program



- Overnight sail debrief
- Coastal Sail Saturday 11th October
- QCYC berthing and booking arrangements

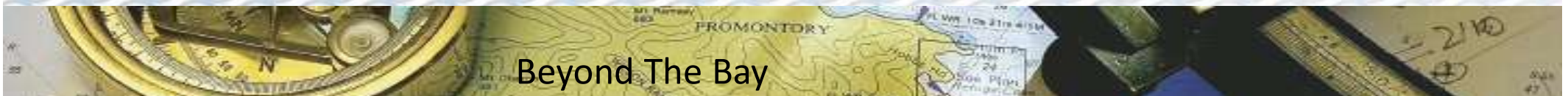


Beyond The Bay

Overnight Sail 13 September



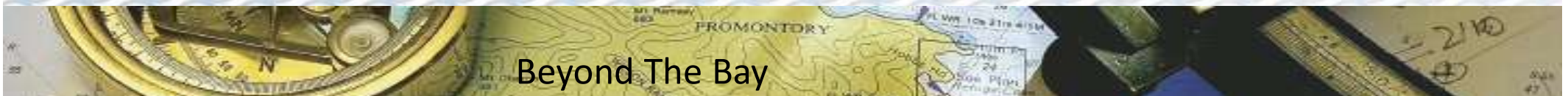
- Weather was great but challenging, light winds and plenty of direction changes
- How was the watch system?
- Did everyone have plenty of rest/sleep
- Any comments from participants?
- Well done on the radio position schedules
- Great quality of the logs



Coastal Sail 11 October



- Sailing Instructions V2 available from the BTB website page
- Please enter on Top Yacht and include crew details
- Are all crew allocated to a yacht
- Any comments from participants?
- Well done on the radio position schedules

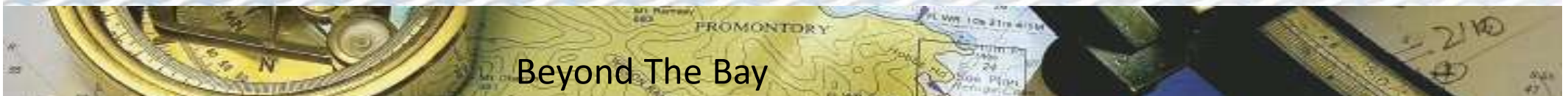
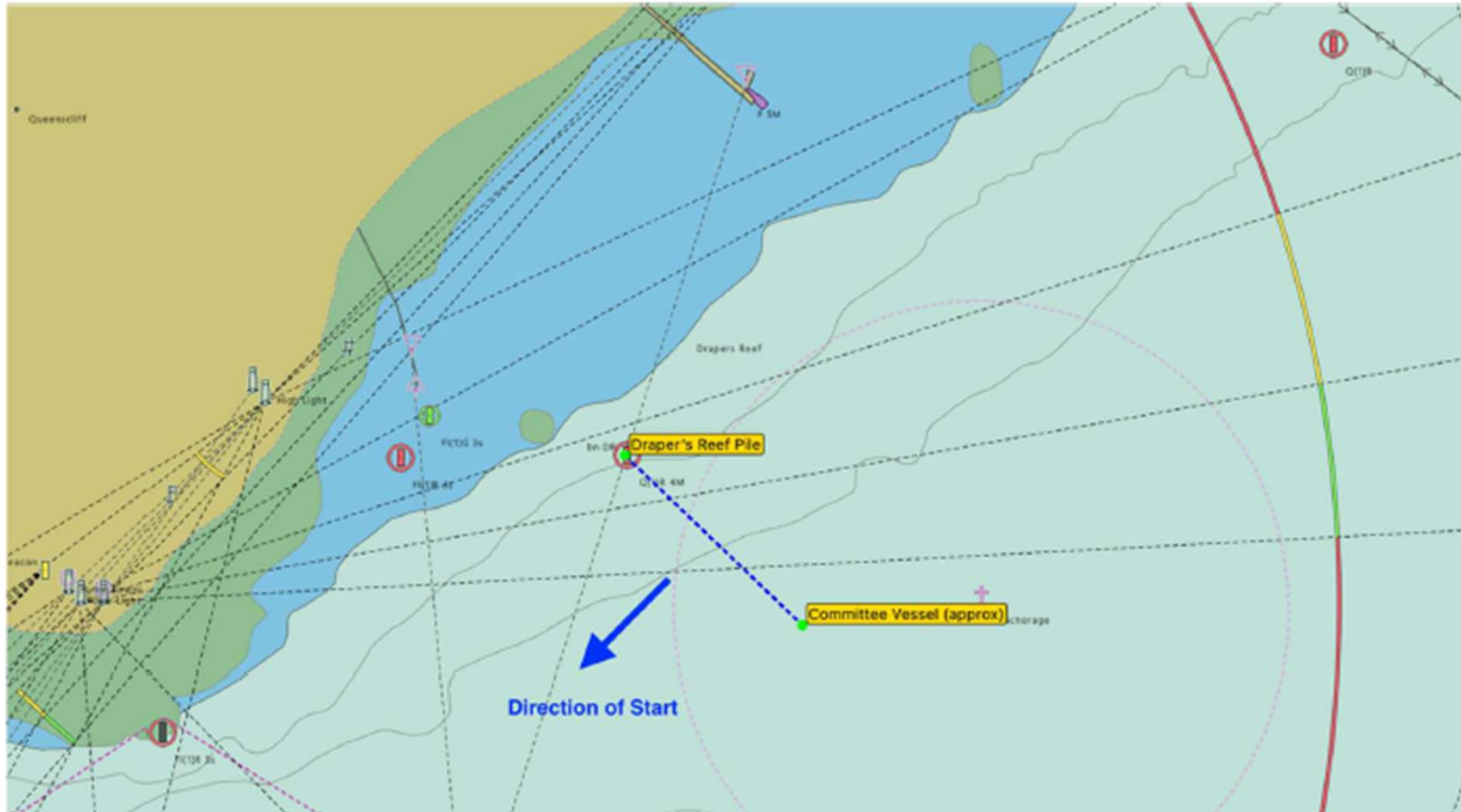


Beyond The Bay

Coastal Sail 11 October – Start line



B2.3. Boats must start in a south-westerly direction.



Beyond The Bay

Coastal Sail 11 October

A13 Summary



Saturday 11 October 2025

Date	Time (AEST)	Action	Channel	Station
11 October	1045-1145	Pre-Event Monitoring	VHF Channel 82	Ocean Racing
11 October	1130	Announcement of Course Selection Sign-On Schedule and monitor	VHF Channel 82	Ocean Racing
11 October	1145	Shipping Advice	VHF Channel 12	Ocean Racing/MTS
11 October	1155-1200	Starting Sequence	VHF Channel 12	Start Boat
11 October	1200	Individual recalls may be notified	VHF Channel 12	Start Boat
11 October	1400	Position Report, Shorten Course	VHF Channel 82	Ocean Racing
11 October	5 minutes before finishing	Report	VHF Channel 82	Ocean Racing
11 October	Finishing	Report and continue to monitor radio	VHF Channel 82	Ocean Racing

Coastal Sail 11 October



B4 Start Procedure

B4.1. Event will be started using the following signals with flares replacing flags as visual signals.

5 Minutes before start	Warning Signal (white flare)
Start	Starting Signal (green flare)

There will be no Preparatory or One Minute signals, amending RRS 26.

B4.2. There will be no General Recall, amending RRS 29.2.

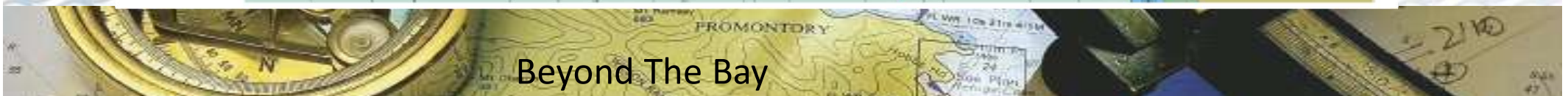
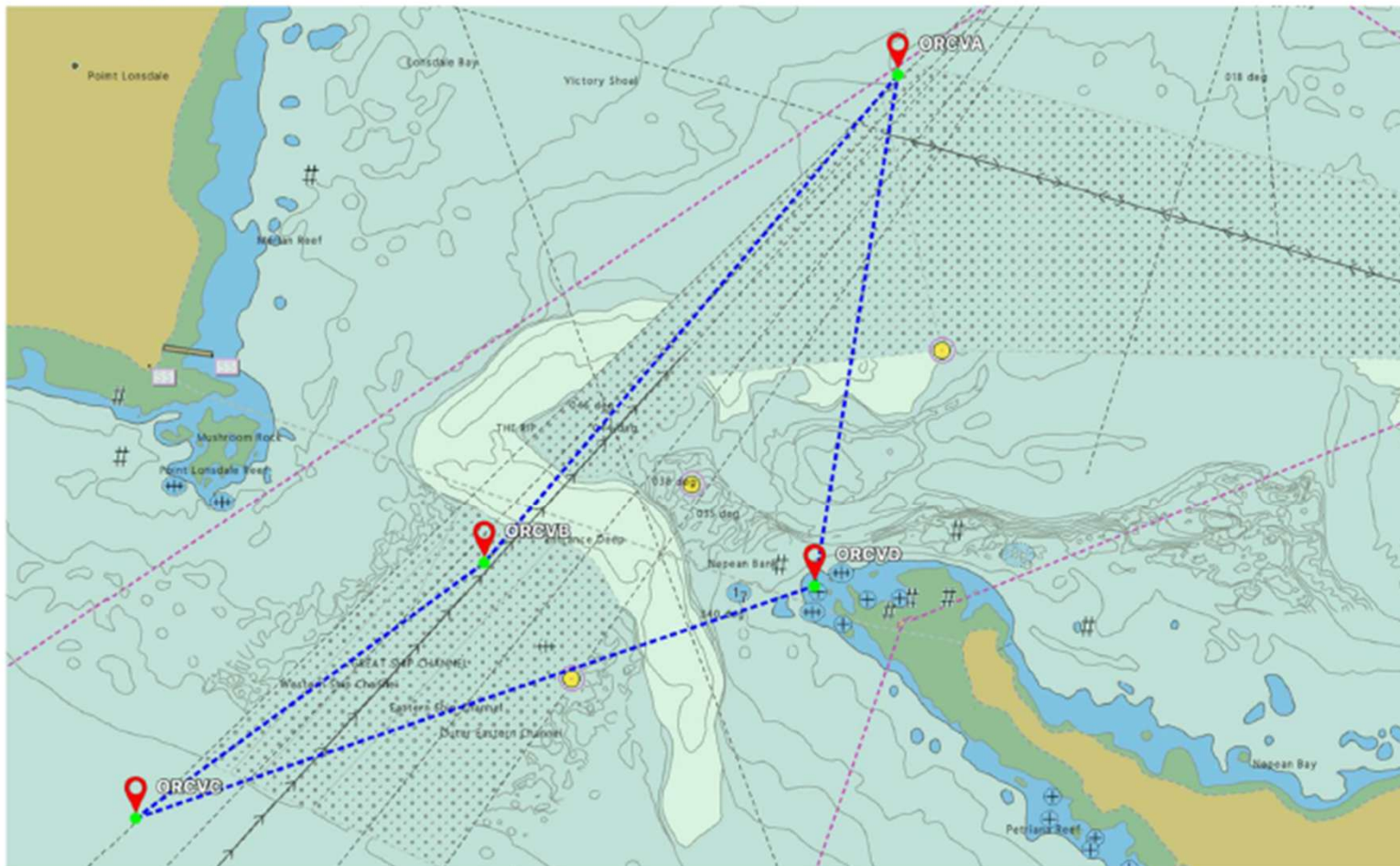


Coastal Sail 11 October



C6 Heads Exclusion Zone

- C6.1. Boats must keep out of the main channels in Port Phillip Heads and avoid obstructing shipping. The area bounded by the following marks (ORVCA-ORCVB-ORCVC-ORCVD-ORCVA), shown in the diagram below, is an obstruction.



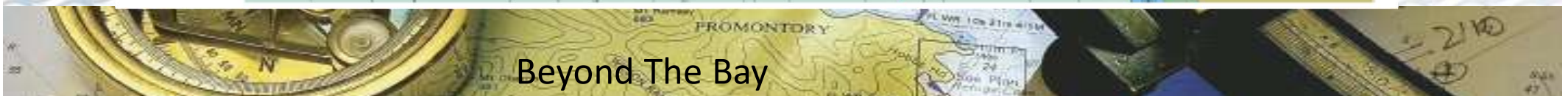
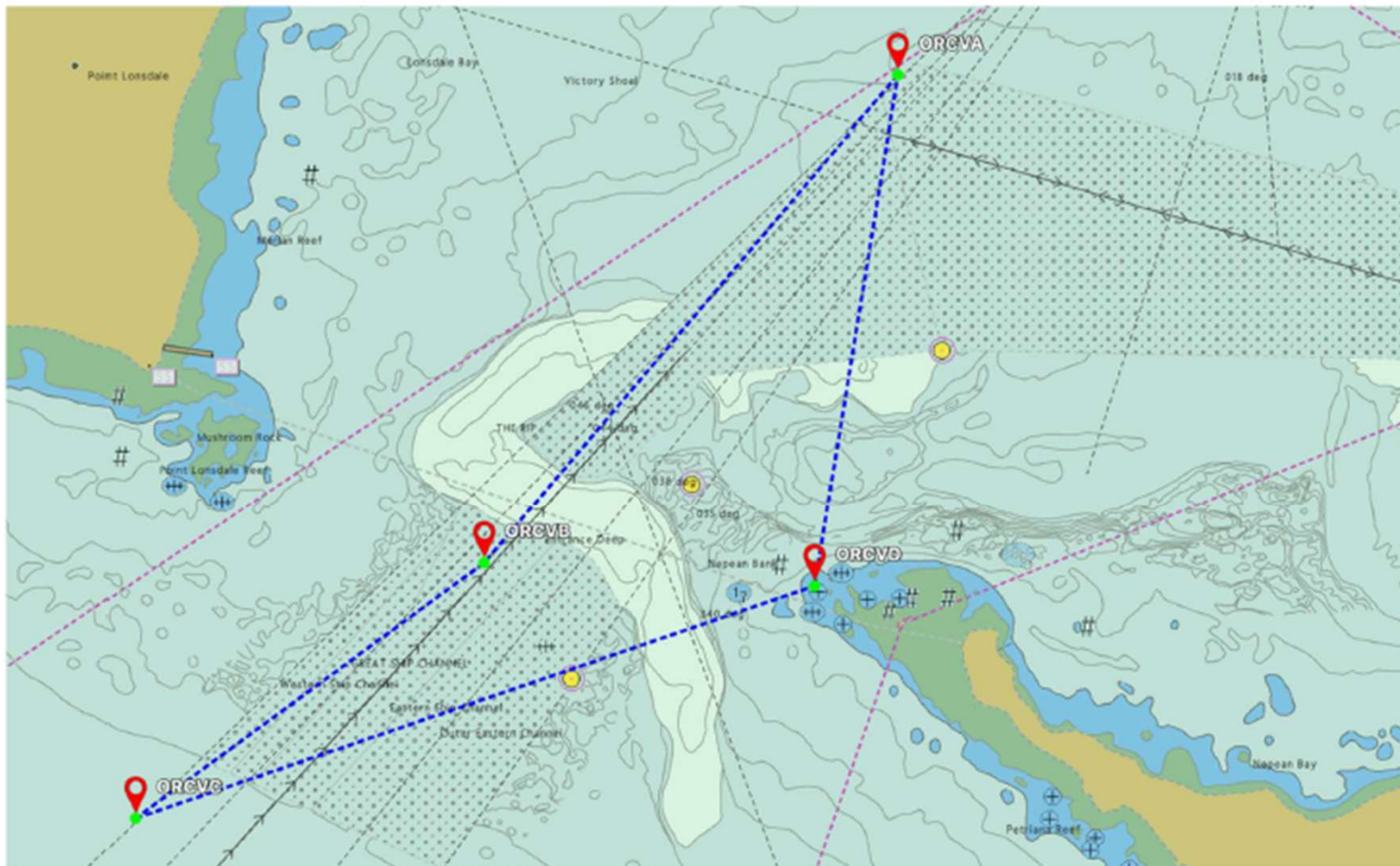
Beyond The Bay

Coastal Sail 11 October



C6 Heads Exclusion Zone

- C6.1. Boats must keep out of the main channels in Port Phillip Heads and avoid obstructing shipping. The area bounded by the following marks (ORVCA-ORCVB-ORCVC-ORCVD-ORCVA), shown in the diagram below, is an obstruction.



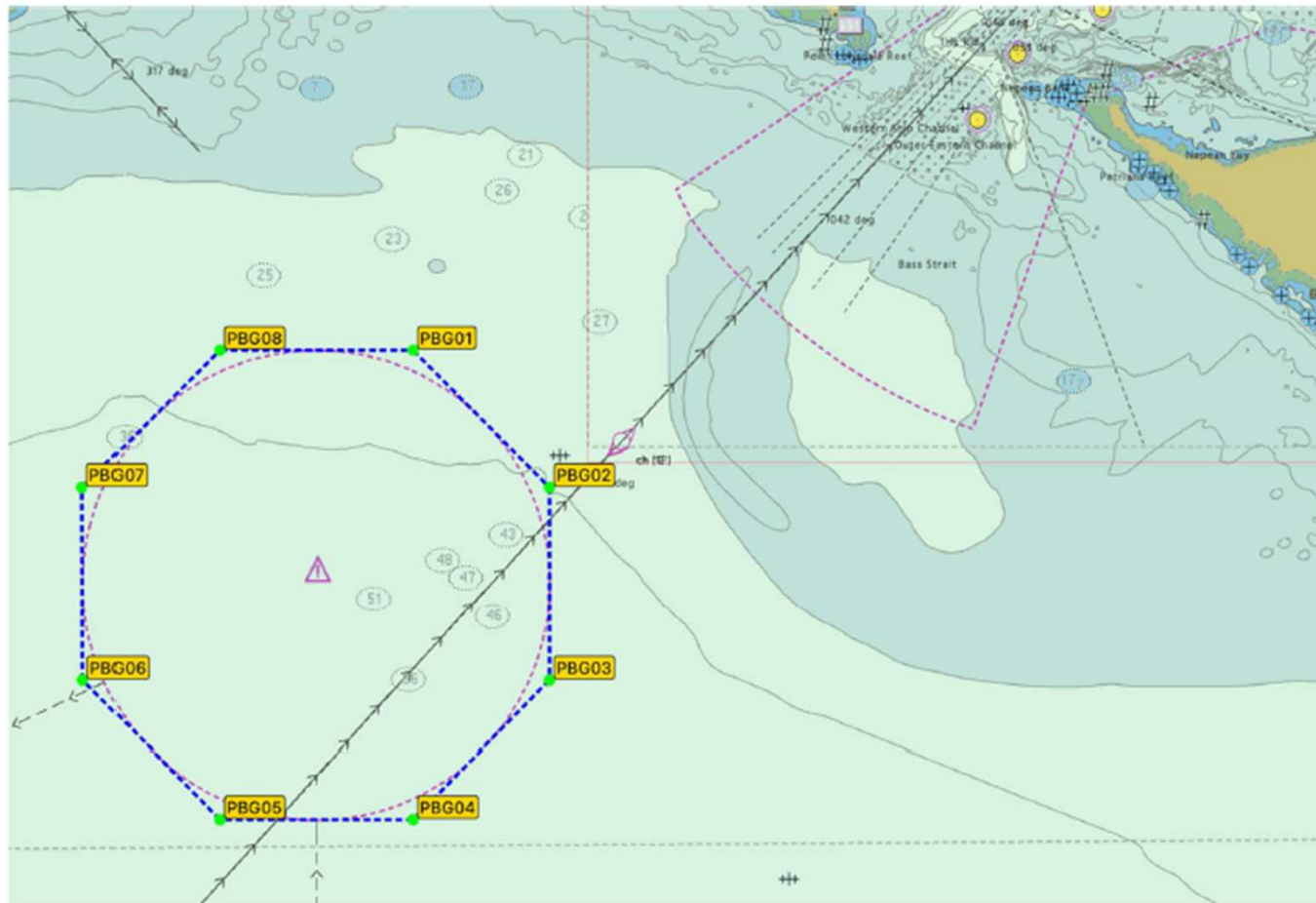
Beyond The Bay

Coastal Sail 11 October



C7 Pilot Boarding Ground Exclusion Zone

C7.1. Boats must keep out of the Pilot Boarding Ground outside Port Phillip Heads to avoid obstructing pilot boats and shipping. The area bounded by the following marks (PBG01-PBG02-PBG03-PBG04-PBG05-PBG06-PBG07-PBG08-PBG01), shown in the diagram below, is an obstruction.



Beyond The Bay

Coastal Sail 11 October



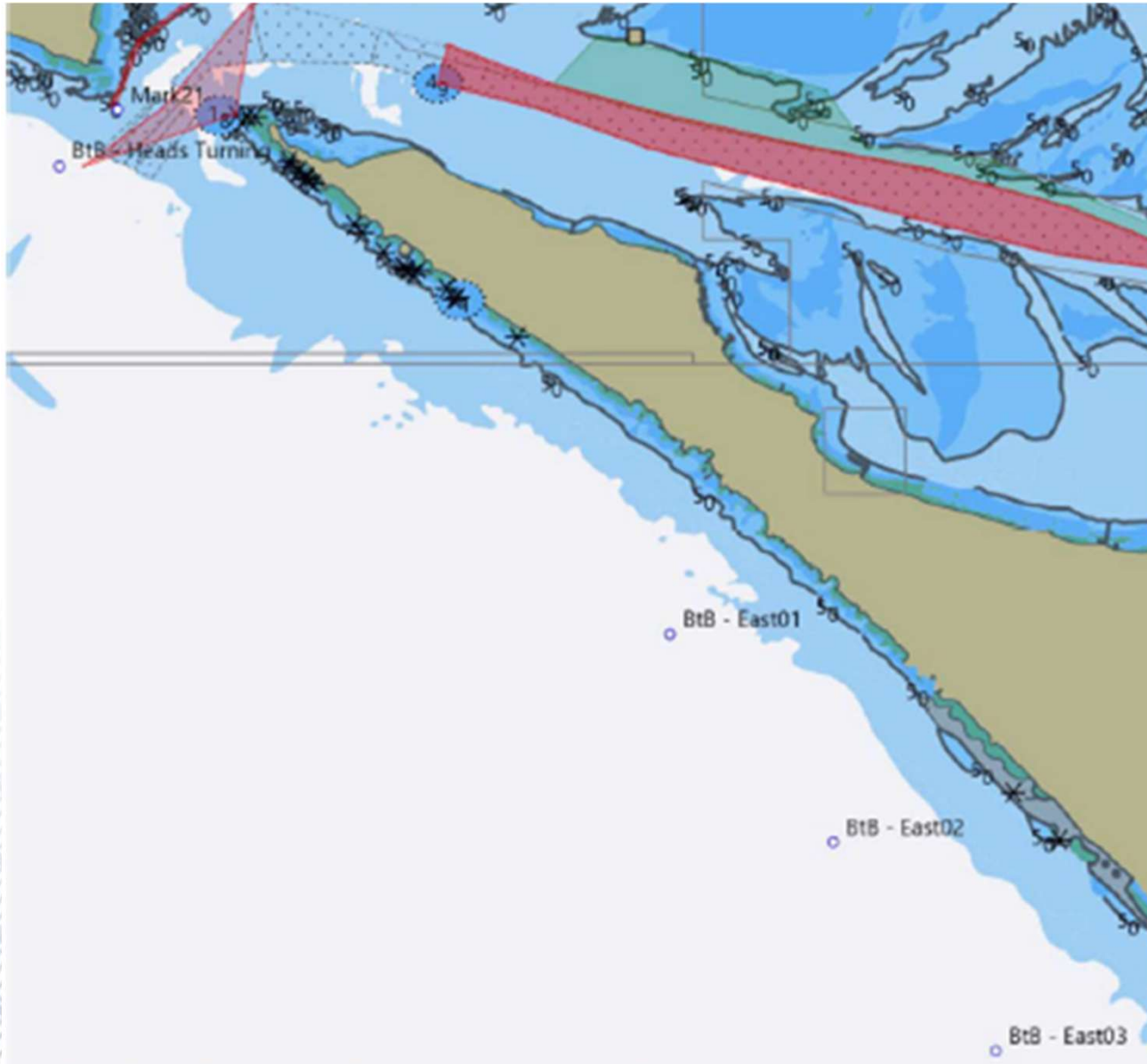
7. The Course

- 7.1. The courses are as described in Appendix C: Courses and Marks.
- 7.2. Please note these courses include mostly virtual marks and, as part of a validation process, competitors must record all rounding or passing times (with the exception of the Heads Exclusion marks) as part of their Event Declaration.
- 7.3. If wind conditions are not sufficient for boats to make at least 5 kts boat speed and over, the engine may be used to sail the course, also if the wind direction through the heads is not in the direction to allow the boat to clear the exclusion zone, the use of the engine may be used through the heads area.
- 7.4. At no stage during the sail, shall any boat sail more than 4nm from the coast.



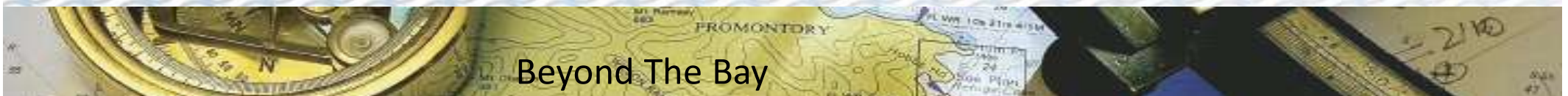
Beyond The Bay

Coastal Sail 11 October



Beyond The Bay

Coastal Sail 11 October



Beyond The Bay

Coastal Sail– Questions?



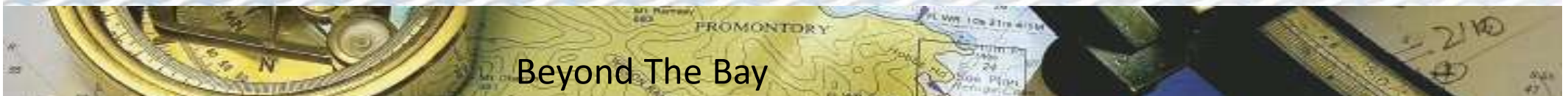
Beyond The Bay

QCYC Berthing and booking arrangements



Beyond The Bay

Thank you and farewell



Beyond The Bay