



SI

2025 ORCV Overnight Bay Sail Sailing Instructions



Photographer: Denise Smeaton

Amendments

Number	Instructions Changed	Summary of Amendment
C1.1	SYM added to table with Coordinates, SB Mussel Farm mark and SB1 Latitude corrected from 37 to 38 degrees.	
C2.2	Carrum changed from Port to Starboard rounding	

Key Information		
	Event Date and start time and finish time	ORCV Overnight Bay Sail Start: 1600 Saturday 13 September 2025 Finish 0900 Sunday 14 September 2025
	ORCV Office Phone	0493 102 744
	Event Director Phone	0418 396 605
	Event Director Email	race.director@orcv.org.au

Copyright © Ocean Racing Club of Victoria Inc 2025

All enquiries to:

Ocean Racing Club of Victoria Inc
3 Aquatic Drive
ALBERT PARK VIC 3206
Australia
orcv@orcv.org.au

Contents

Amendments	2
Sailing Instructions	5
1. Event Program	5
2. Rules	5
3. Notices to Participants	5
4. The Start.....	5
5. The Start.....	5
6. The Courses	6
7. The Finish	6
8. Event Logs.....	6
9. Declarations.....	6
10. Yachts Retiring.....	6
11. Safety Regulations.....	6
12. Exclusion Zones and Hazards.....	7
13. Unsuitable Conditions	7
14. Event Communications	7
15. Disclaimer of Liability	7
16. Crew Behaviour	8
17. Berthing at HBYC.....	8
18. Appendices	8
Appendix A: Event Communications	9
A1 Emergency and Urgent Safety Messages	9
A2 General.....	9
A3 Reporting Schedules.....	9
A4 Summary – ORCV Overnight Bay Sail	10
A5 Radio Event Channels	11
A6 Phone	11
A7 Email.....	11
A8 Sign-on Schedule.....	12
A9 Yachts Retiring.....	12
Appendix B: Start	13
B1 RBYC Start	13

B2 Safety Beach Start14

Appendix C: Courses and Marks.....15

C1 Marks15

C2 Courses17

Sailing Instructions

The 2025 ORCV Overnight Bay Sail will be conducted on the waters of Port Phillip. The Event is organised and conducted by the Ocean Racing Club of Victoria Inc (ORCV) in co-operation with Hobsons Bay Yacht Club.

1. Event Program

The Event is scheduled as follows:

Event	Date	Start Time	Course Type
Bay sail	Saturday/Sunday 13/14September 2025	1600	Fixed marks

2. Rules

2.1. The rules for the Event will be:

- The 2025-2028 Racing Rules of Sailing (RRS) of Australian Sailing (AS),
- The Prescriptions and Special Regulations of Australian Sailing (AS),
- ColRegs

except as amended by these Sailing Instructions and the Notice of Event.

2.2. All times in these Sailing Instructions are Australian Eastern Standard Time (AEST).

3. Notices to Participants

3.1. Notices to Participants will be posted on the ORCV website www.orcv.org.au.

3.2. Any change to these Sailing Instructions will be:

- Posted on the ORCV website (www.orcv.org.au) before 0700 on the day of this Event.
- Advised to participants on VHF Channel 82 at the commencement of the radio sign-on.

4. The Start

4.1. Start time will be 1600 on Saturday, 13 September 2025 always allowing the Event Director discretion to postpone to another time.

4.2. Yachts may elect to start from Starting Lines located in the vicinity of Royal Brighton Yacht Club or Safety Beach Sailing Club.

5. The Start

The Start is as described in Appendix B: Start.

6. The Courses

The courses are as described in Appendix C: Courses and Marks.

7. The Finish

- 7.1 The event shall finish at 0900 on Sunday 14 September 2025. There is no finish line as the course is too long for most of the yachts to complete the course within the time allocated for the course. Each yacht shall determine when to head to Gellibrand with the aim to pass Gellibrand at 0900. If any yacht sails the complete course, head to HBYC after Gellibrand.
- 7.2 At 0900 on Sunday 14 September 2025 each yacht shall record its position in its Event Log and proceed to HBYC.

8 Event Logs

- 8.1 Each yacht shall maintain an Event Log using the template provided by ORCV recording:-
- marks rounded or passed in sequence
 - the time when each mark is rounded or passed.
 - The cumulative distance made good at each mark
 - the yachts position at each position reporting schedule
 - the yachts position at Finishing Time
- 8.2 The Event Log shall be given to the Event Director at Hobsons Bay Yacht Club at the earliest opportunity after completion of the Event and not later than 1015 on Sunday 14 September, 2025.
- 8.3 Event Log template will be provided to all participants prior to the event using a ORCV standard template.

9. Declarations

- 9.1. Written declarations are not required for this event

10. Yachts Retiring

Yachts retiring must inform the Event Director as described in Appendix A9 Yachts Retiring.

11. Safety Regulations

- 11.1. The Safety Category and regulations are as set out in the Notice of Event.
- 11.2. The ORCV strongly recommends that safety harnesses and suitable lifejackets be worn whenever conditions warrant, particularly in rough weather, at night or when sailing short-handed.
- 11.3. Attention is drawn to Victorian regulations which stipulate the mandatory wearing of lifejackets when on deck during times of heightened risk. This includes crossing a bar, transiting the Heads, sailing at night and when the weather or weather forecast indicates heightened risk. For full details, consult the Safe Transport Vic website (<https://safetransport.vic.gov.au>).

- 11.4. Yachts must keep clear of all commercial shipping (vessels more than 35 metres in length) while within Port Phillip, as required by Ports Victoria Harbour Master's Directions.
- 11.5. In the event of avoiding action becoming necessary, a yacht may start its engine and motor to avoid a shipping hazard, on a course perpendicular to the ship's track, for as long as necessary.
- 11.6. A yacht that takes such action must return to the location the yacht started motoring, cease motoring and resume racing as soon as possible. The details of any such action must be reported to the Event Director on finishing via SMS.
- 11.7. Any yacht found to have impeded the progress of a commercial vessel will be disqualified.
- 11.8. A yacht and its equipment may be inspected at any time for compliance with the current Australian Sailing Special Regulations and these Sailing Instructions.
- 11.9. The Event Director may, at their absolute discretion, disqualify a yacht from participating or continuing to participate in the Event if the Event Director believes that it is unsafe for that yacht to commence or continue to participate.

12. Exclusion Zones and Hazards

- 12.1. Yachts must keep clear of all commercial shipping including when sailing inside or transiting any shipping channels.
- 12.2. Yachts shall not sail into any of the commercial shipping channels except when crossing the main shipping channel.

13. Unsuitable Conditions

- 13.1. Any termination of the event will be advised by radio on VHF Channel 82.

14. Event Communications

Event communications procedures are detailed in Appendix A Event Communications.

15. Disclaimer of Liability

- 15.1. All those taking part in the Event do so at their own risk and responsibility.
- 15.2. Acceptance of a yacht as an entrant in this Event is not to be taken as express or implied acceptance on the part of the ORCV and/or any of its Flag Officers, Committee Members, Volunteers, Equipment Auditors or any other members, of the fitness of any yacht or any equipment on such yacht to safely participate in this Event, and/or deal with any and all eventualities of the contemplated passage. It is the responsibility of each skipper of each participating yacht to decide whether their yacht is fit and suitably crewed for the intended purpose, and neither the ORCV nor any club, person or company connected with the organisation of this Event is responsible for the seaworthiness of any yacht whose entry is accepted.
- 15.3. Attention is drawn to Fundamental Rule 3 "Decision to Sail":
"The responsibility for a boat's decision to participate in this Event or to continue Sailing is theirs alone."

16. Crew Behaviour

- 16.1. All participants are reminded that they are expected to comply with ORCV's Member Protection Policy and Code of Conduct. For more information refer to:
<https://www.orcv.org.au/club/member-and-participant-protection>
- 16.2. Skippers are reminded that crew behaviour is both the skipper and all the crew's responsibility to manage, at all times, including during any deliveries or pre- and post-event social events.

17. Berthing at HBYC

- 17.1. Berthing will be available at HBYC after the Event. Yachts should call ORCV 5 minutes before arrival on VHF 73 for directions

18. Appendices

The following Appendices A, B, and C form part of these Sailing Instructions.

Appendix A: Event Communications

This Appendix describes the radio and other communications procedures to be followed during the Event.

A1 Emergency and Urgent Safety Messages

Urgent safety messages for the Event Director may be transmitted at any time on VHF Channel 82. The Event Director can be phoned on 0418 396 605.

A2 General

- A2.1. While sailing, a yacht must neither make nor receive communications not available to all yachts.
- A2.2. Where a yacht is fitted with an AIS transponder, the transponder must be switched on in transmit mode with yacht name and MMSI always displayed during the Event.
- A2.3. Yachts must not give false or misleading position reports.
- A2.4. The yacht contact mobile phone must always be on while participating and answered to calls from the Event Director.

A3 Reporting Schedules

- A3.1. Yachts will be called in alphabetical order and shall respond with their position (as at the time of the schedule commencement) in degrees and whole minutes only, and the marks rounded since the previous Position Schedule. The ORCV provided log shall be updated for their reporting schedule positions.
- A3.2. Refer summary below for position schedule times.

A4 Summary – ORCV Overnight Bay Sail

Date	Time	Action	Channel	Station	Comments
Sat 13 September 2025	1515	Radio sign-on, crew changes	VHF 82	Ocean Racing	Postponement if applicable
Sat 13 September 2025	1600	Event Start	VHF 82	Ocean Racing	
Sat 13 & Sun 14 September 2025	Event Duration	Unscheduled Announcements	VHF 82	Ocean Racing	
Sat 13 & Sun 14 September 2025		Retirement, if applicable	VHF 82 or 0418 396 605	Ocean Racing	
Sat 13 September 2025	1805	Position Schedule	VHF 82	Ocean Racing	
Sat 13 September 2025	2105	Position Schedule	VHF 82	Ocean Racing	
Sun 14 September 2025	0005	Position Schedule	VHF 82	Ocean Racing	
Sun 14 September 2025	0305	Position Schedule	VHF 82	Ocean Racing	
Sun 14 September 2025	0605	Position Schedule	VHF 82	Ocean Racing	
Sun 14 September 2025		Approx 5 minutes from HBYC	VHF 82	Ocean Racing	
	Berthing	Contact Ocean racing for berthing instructions	VHF 73	Ocean Racing	

A5 Radio Event Channels

A5.1. Station name: **Ocean Racing**

A5.2. Event communications will use the following VHF Channels:

Channel	Usage
82	<ul style="list-style-type: none"> • Radio sign-on for entrants • Starting sequence • Individual recalls • Event monitoring • Unscheduled announcements • Shortened course • Monitor when finishing
16	Emergency, calling (all yachts must monitor at all times)
67	Working, Maritime Safety Information
73	Berthing assistance at HBYC

A5.3. Yachts must continuously monitor both VHF channel 16 and VHF channel 82 during the Event.

A5.4. If standing by on another VHF channel, yachts must still maintain a continuous listening watch on VHF Channel 16 by a suitable method such as dual watch or scanning or multiple radios.

A5.5. VHF Channel 82 is a repeater located on Arthurs Seat. Yachts should ensure that VHF radios are set to the international frequency set, standard in Australia, when using this channel.

A6 Phone

A6.1. The following **phone number** may be used:

Number	Usage
0418 396 605	Event Director's phone

A7 Email

The following **email address** may be used:

Email address	usage
race.director@orcv.org.au	Event Director messages

A8 Sign-on Schedule

- A8.1. Commencing at 1515, a radio sign-on schedule will be conducted by Ocean Racing on VHF Channel 82 for all yachts. All yachts will be called in alphabetical order to confirm that they are starters in the Event.
- A8.2. Each yacht must respond:
 {Yacht Name} is a starter, {xx} persons on board, over.
- A8.3. A yacht that does not respond on the first call must wait until it is called again at the end of the schedule.
- A8.4. In the event of late crew changes, this must be done in the TopYacht Entry System up until 0900 on Friday 12 September, after which TopYacht Entry System will be locked out for any further crew changes. After this date and time any crew changes are to be sent to the Event Director via email race.director@orcv.org.au. Crew numbers and crew names/details must be finalised by the sign-on schedule.
- A8.5. Any changes to Sailing Instructions will be announced on VHF Channel 82 at the commencement of the sign-on schedule.
- A8.6. Any variations to the courses to be sailed, such as a relocated Starting Line, will also be announced as part of the sign-on schedule.

A9 Yachts Retiring

- A9.1. If a yacht retires from the Event, every effort must be made to advise Ocean Racing as soon as possible and to give the following information:
- Time & position at the time of retirement
 - Reason for retirement
 - The state of the crew
 - The port to which the yacht is returning.
- A9.2. A yacht that retires must maintain its routine monitoring of VHF Channels 82 and 16 until such time as it reaches a safe harbour.
- A9.3. Upon arrival at a safe harbour, contact must be made with Ocean Racing by phone (0418 396 605) or VHF Channel 82 to confirm safe arrival. Failure to comply with this requirement may prejudice acceptance of an entry in future Events/Races.

Appendix B: Start

This Appendix contains information about the starting line and the starting procedures applicable to this Event. The positions shown are approximate and may vary on the day.

B1 RBYC Start

B1.1. The location of the start line is given in the diagram below.

ORCV OVERNIGHT BAY RACE - BRIGHTON START



B1.2. Yachts shall start in a northerly direction

B2 Safety Beach Start

B2.1. The Start Line shall be between the Centre Line of the SBSC Start Box and the Green Navigation Pile West of the Club House as illustrated below:-

ORCV OVERNIGHT BAY RACE - SAFETY BEACH START



B2.2. Yachts shall start in a southerly direction.

Appendix C: Courses and Marks

This Appendix describes the courses and how they are to be sailed. The diagrams supplied are for illustrative purposes only and should not be used for navigation. The positions shown are approximate and may vary on the day.

C1 Marks

C1.1. These mark descriptions and positions should not be used uncritically. They have been assembled from the best information available but may only be approximate and may contain errors. Skippers and navigators should verify mark information using their own resources.

Mark	Latitude	Longitude	Comments
Carrum 2	S38 ⁰ 03.071'	E145 ⁰ 04.526'	Unlit, Yellow
Centre M1	S38 ⁰ 03.534'	E144 ⁰ 52.200'	Special purpose
Gellibrand	S37 ⁰ 52.614'	E144 ⁰ 54.881'	Pile
Outer Anchorage	S37 ⁰ 56.914'	E144 ⁰ 51.500'	Yellow conical
PGB	S38 ⁰ 06.410'	E144 ⁰ 44.203'	Pile
Pipeline 2	S37 ⁰ 55.435'	E144 ⁰ 53.189'	Pile
Pipeline 3	S37 ⁰ 53.392'	E144 ⁰ 52.850'	Pile
PRE	S38 ⁰ 04.954'	E144 ⁰ 39.944'	Pile
R1	S38 ⁰ 16.472'	E144 ⁰ 58.359'	Conical
R3	S37 ⁰ 53.143'	E144 ⁰ 56.386'	Conical
RBYC 6	S37 ⁰ 54.320'	E144 ⁰ 58.530'	Conical
RMYS G	S37 ⁰ 50.980'	E144 ⁰ 56.156'	Yellow
SB Mussel Farm	S38 ⁰ 18.171'	E144 ⁰ 58.641'	Virtual Mark
SB 1	S38 ⁰ 17.930'	E144 ⁰ 56.604'	Conical
SB-STR	S38 ⁰ 18.379'	E144 ⁰ 59.304'	
Spoil Ground	S37 ⁰ 59.066'	E144 ⁰ 52.999'	Special purpose

Mark	Latitude	Longitude	Comments
SYC 5	S37° 58.810'	E144° 58.380'	Conical
SYM	S38° 13.910'	E144° 50.620'	Conical
West Channel Pile	S38° 11.573'	E144° 45.394'	Pile

C1.2. If a given mark cannot be physically located, then round a substitute Virtual Mark located as per the table and report this to the Event Director on 0418 396 605 using SMS.

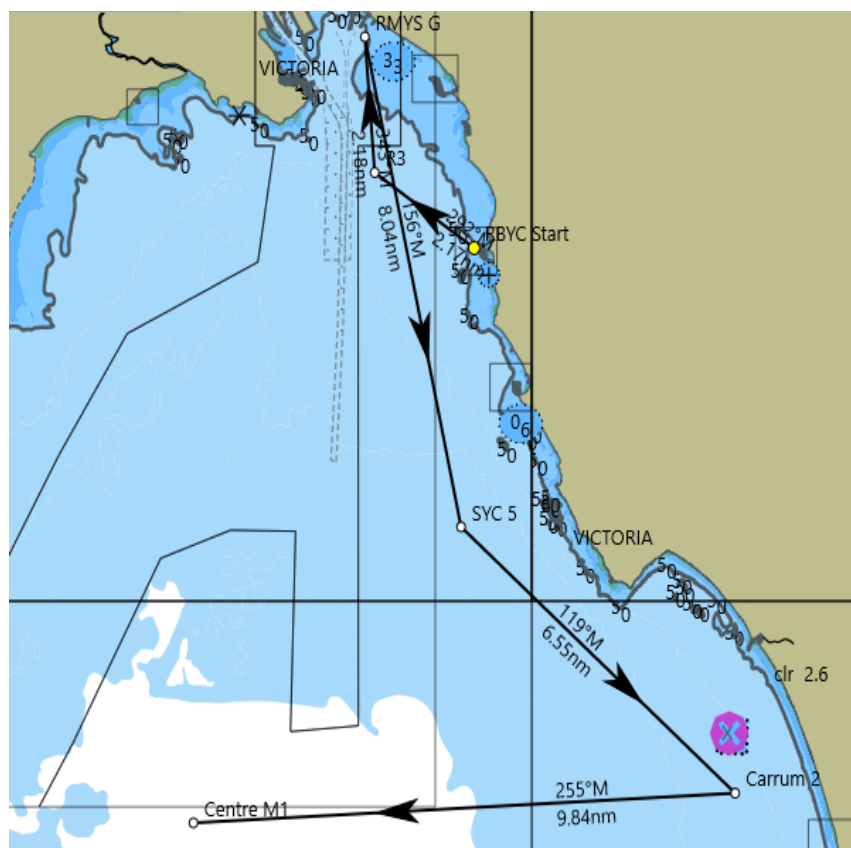
C2 Courses

C2.1. The courses are in two parts comprising: -

- One of two fixed marked courses (RBYC or SBSC start) from the skippers chosen start line to Mark Centre M1
- A common fixed mark course from Mark Centre M1 to the Finish.

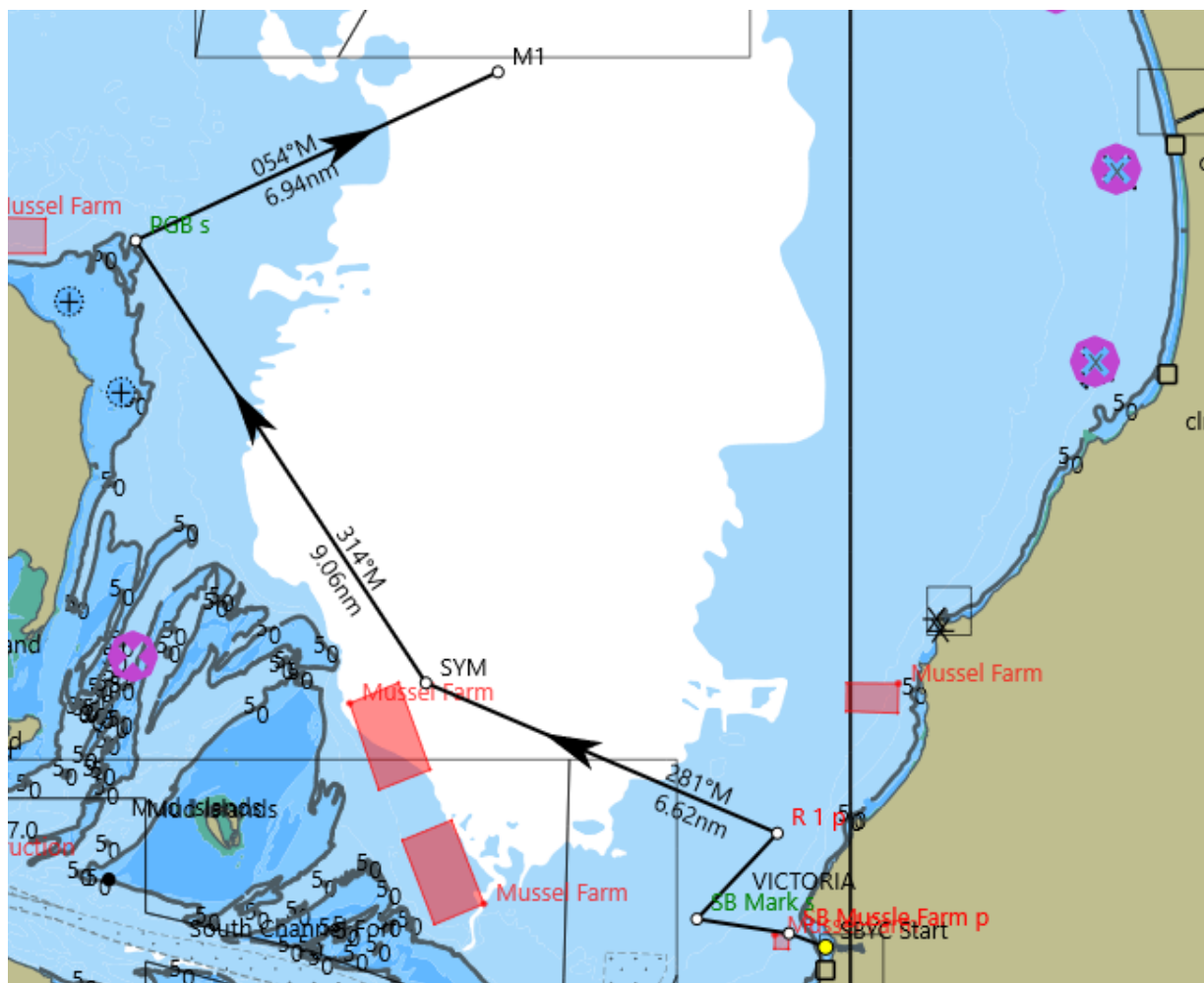
C2.2. RBYC start to Centre M1 - Course Length approx. 29 nm

Mark Name	Description
RBYC Start	Tower Start between Flag on Tower and Mark RBYC6
R3	Round to starboard
RMYS G	Round to starboard
SYC 5	Round to port
Carrum 2	Round to starboard
Centre M1	Round to port and keep sailing to next course



C2.3. SBSC start to Centre M1 - Course Length approx. 27 nm

Mark Name	Description
SBSC Start	Tower Start between start line on Club and Mark SB-STR
SB Mussel Farm	Virtual Mark – Round to Port
SB 1	Round to starboard
R1	Round to port
SYM	Round to starboard
PGB	Round to starboard
Centre M1	Round to port and keep sailing to next course



C2.4. Centre M1 to Finish - Course Length approx. 92.5 nm

Mark Name	Description
Centre M1	From previous course
West Channel Pile	Round to starboard
PGB	Round to port
PRE	Round to starboard
Pipeline 3	Round to starboard
Pipeline 2	Round to starboard
Outer Anchorage	Round to port
Spoil Ground	Round to starboard
Centre M1	Round to starboard
Pipeline 3	Round to starboard
M1	Round to starboard
PRE	Round to starboard
Pipeline 3	Round to starboard
Gellibrand - Finish	Round to port

