

**Passage to Queenscliff
Saturday 14 September 2024**

**SAILING INSTRUCTIONS v3
Women Helm, Navigator and Radio Operator Rally**



Sponsors & Partners





**The organising authority is Queenscliff Cruising Yacht Club Inc.
The event is conducted by the Queenscliff Cruising Yacht Club with
the assistance of the KISS Program**

1. RALLY

1.1 The KISS Passage Rally will be held on the waters of Port Phillip starting in the area of Brighton, Geelong or Queenscliff and sailing to Queenscliff via the West Channel. The start is defined in 4.2 of these Sailing Instructions.

1.2 The Warning Signal for the Rally will be at 0825hrs on Saturday 14 September 2024.

2. RULES

The Rally event will be governed by the current versions of -

2.1 The 2021-24 Racing Rules of Sailing (RRS) of World Sailing (WS)

2.2 The Prescriptions and Special Regulations of Australian Sailing (AS) Category 5

2.3 The Notice of Rally Event, except as amended by these Sailing Instructions.

3. NOTICES TO COMPETITORS

3.1 Any change or amendment to these Sailing Instructions and Notices to competitors will be posted on the [ORCV KISS Training website page](#) and the [Queenscliff Cruising Yacht Club website](#).

3.2 Where possible any such changes may also be communicated by email to the relevant Skipper/Owner prior to 2000hrs on 13 September 2024.

3.3 An online Briefing will be held as an MS Teams webinar on Thursday 12 September 2024 at 1900hrs for all participants.

4. THE START

4.1 There will be three (3) start lines -

- a. **Course 1** - Brighton Start - in the vicinity of the breakwater from the Royal Brighton Yacht Club Control tower.
- b. **Course 2** - Geelong Start - in the vicinity of Hopetoun Channel #10 mark.
- c. **Course 3** - Queenscliff - in the vicinity of Queenscliff Approach mark.

4.2 The Rally will be started in accordance with Racing Rules of Sailing (RRS) Rule 26.

4.3 Boats will determine their own start time taking into account tides, weather and boat performance data. All boats must start between 0830hrs and 0900hrs.

The time limit for all boats to cross the finish line at Swan Spit will be 1500hrs.

4.4 Course 1 Start - Brighton

- a. Rally Director will confirm the position of the start in a broadcast message on VHF 73 at 0730hrs.
- b. The Warning Signal shall be displayed at 0825hrs but may be postponed at the Rally Director’s discretion.
- c. The start line shall be an imaginary line between the yellow RBYC 6 fixed mark off the breakwater as the starboard end and the Brighton Tower on the marina wall.
- d. The Rally will be started in accordance with Racing Rules of Sailing (RRS) Rule 26.

4.5 Course 2 Start - Geelong

The start line will be due South of Hopetoun Channel #8 mark.

Boats will record their own time at the start mark and report to the Race Director by sms at the start of their passage.

The start time is also to be recorded in the KISS LogBook.

4.6 Course 3 Start - Queenscliff

The start line will be due South of Queenscliff Approach mark.

Boats will record their own time at the start mark and report to the Race Director by sms at the start of their passage.

The start time is also to be recorded in the KISS LogBook.

5. CLASS FLAG - Course 1

The rally Class Flag for Course 1 will be code flag “R”.

6. COURSES

6.1 Boats will be allowed to use their motor in order to maintain their ETA for the finish line, but must record the time interval for motor sailing in the vessel’s Log Book as to when the motor was started and when it was shut down and the interval time for which it was running.

6.2 Course 1 - Brighton Start

Course 1	Brighton Start	Distance	26nm
Course	Mark	Leave to	Lat/Long
Start line	Brighton Tower	Port	37°54.4S 144°58.8E
	RBYC #6 yellow	Starboard	37°54.3S 144°58.5E
Mark 1	Transit 1 Port Melb Channel	Starboard	38°00.0S 144°55.6E

Mark 2	West Channel Pile	Starboard	38°11.5S 144°45.4E
	West Channel #13	Port	38°11.9S 144°45.9E
Finish line	Swan Spit	Starboard	38°15.4S 144°42.5E
	West Channel #2	Port	38°15.6S 144°42.4E

6.3 Course 2 - Geelong Start

Course 2	Geelong Start	Distance	27nm
Course	Mark	Leave to	Lat/Long
Start line	Hopetoun Channel #10	Port	38°07.4S 144°24.13E
	RGYC Cb2 Yellow	Starboard	38°07.6S 144°24.10E
Mark 1	Hopetoun Channel #8	Port	38°07.3S 144°24.80E
Mark 2	Wilson Spit Channel #14	Starboard	38°07.2S 144°27.53E
	Yellow beacon	Port	38°07.0S 144°27.42E
Mark 3	Steamboat Pile	Port	38°06.7S 144°30.98E
Mark 4	Yellow beacon	Port	38°06.5S 144°33.26E
Mark 5	Point Richards Bank	Starboard	38°06.3S 144°37.00E
Mark 6		Virtual	38°06.0S 144°37.58E
Mark 7	Yellow beacon	Port	38°06.6S 144°40.68E
Mark 8	Lateral beacon red	Starboard	38°07.0S 144°40.97E
Mark 9	Lateral beacon red	Starboard	38°08.8S 144°43.28E
Mark 10	Lateral beacon green	Port	38°08.9S 144°43.38E
	Lateral beacon red	Starboard	38°08.9S 144°43.34E
Mark 11		Virtual	38°09.0S 144°43.36E
Mark 12	Cardinal mark	Starboard	38°09.1S 144°43.42E
Mark 13	Lateral beacon red	Port	38°09.2S 144°43.49E
Mark 14	West Channel Pile	Starboard	38°11.5S 144°45.4E
	West Channel #13	Port	38°11.9S 144°45.9E
Finish line	Swan Spit	Starboard	38°15.4S 144°42.5E
	West Channel #2	Port	38°15.6S 144°42.4E

6.4 Course 3 - Queenscliff Start

Course 3	Queenscliff Start	Distance	25nm
Course	Mark	Leave to	Lat/Long
Start Line	Queenscliff Approach	Port	38°15.7S 144°42.6E
Mark 1	West Channel #3	Port	38°15.9S 144°42.7E
Mark 2	Lateral Beacon Symonds Channel	Port	38°13.6S 144°48.5E
Mark 3		Virtual	38°11.8S 144°53.0E
Mark 4	Lateral Beacon #2	Port	38°09.0S 144°44.4E
Mark 14	West Channel Pile	Starboard	38°11.5S 144°45.4E
	West Channel #13	Port	38°11.9S 144°45.9E
Finish line	Swan Spit	Starboard	38°15.4S 144°42.5E
	West Channel #2	Port	38°15.6S 144°42.4E

7. THE FINISH

7.1 The Finish Line will be between -

Swan Spit Mark (38°15.4S 144°42.15E) to Starboard and West Channel #2 (38°15.6S 144°42.4E) to Port.

A diagram of the Finish Line Area is in Appendix A

7.2 An alternate finish line may be advised by radio if the Rally Director considers it necessary to shorten course. The alternate Finish Line will be at the West Channel Pile Gate as described above.

7.3 All boats are required to record their own times at both gates in 'hours–minutes–seconds'

7.4 Following the finish, boats should proceed to the area East of Queenscliff Approach channel marker (38°15.73S 144°41.47E) and call "QCYC Base" on Ch 82 to inform of their approach to Queenscliff and obtain berthing instructions.

7.5 Approaching the Queenscliff Cut, there are several Cautions to be aware of as outlined in Appendix B.

8. TIME LIMIT

The time limit for all yachts shall be 1500hrs.

Any yacht finishing after this time shall be scored DNF (amends RRS 35).

9. RETIREMENT

9.1 If a boat retires from the rally, the Boat Radio Operator (BRO) must advise the Rally Director of the time and position of the retirement, the reason for retirement, and the ETA to the intended destination.

9.2 Regular radio updates re position are to be maintained until safe arrival at the boat’s destination has been confirmed with the Rally Director

10. DECLARATION

Written declarations are not required. A yacht correctly passing through the finish line is deemed to have made a declaration on the part of her skipper that to the best of her knowledge no rules have been breached during the race.

If the skipper is in any doubt they should SMS the Rally Director’s phone 0429 982 832.

11. RADIO COMMUNICATION

11.1 Call signs for the event will be as follows –

	Call Sign	VHF Channel	Time
QCYC Rally Director	“Brighton Tower”	73	0730 - 0915hrs
Rally Fleet Radio	”Another Chapter”	82	After 0915hrs
QCYC Base	“QCYC Base”	82	After finishing

11.2 Radio communications for the rally will be conducted on VHF Channel 73 from 0730hrs until 0915hrs during the starting window.

11.3 Following the end of the start window at 0915hrs, radio communications will switch to VHF channel 82 for the remainder of the event.

11.4 All yachts are to maintain a listening watch during the event.

11.5 Mandatory position reporting by radio to the Rally Director will be required from all participating boats at the following positions. These position reports are to be recorded in the boat’s Log Book

11.6 Appendix D lists the times and reporting positions in chronological order for purposes of recording information and communications.

Mandatory Reporting	VHF	Call Sign
Pre Race Sign On Sked 0745hrs Boats to call in and confirm "Boat (name) is a starter. (Number) POBs." <ul style="list-style-type: none"> ● Boats to confirm their own determined start time. ● Boats to give their ETA to the finish line. ● Boat to notify any crew changes and details ● Boats to notify any changes of lead crew roles (helm/navigator/radio operator) 	73	Brighton Tower
Course 1 - At Transit #1 Port Melb Channel mark or Course 2 - At Steamboat Pile near Wilson Spit or Course 3 - At Virtual Mark #4	82	Another Chapter
West Channel Pile Gate	82	Another Chapter
Finish Gate Swan Spit	82	Another Chapter

11.7 Except in an emergency, a boat shall neither make radio transmissions while racing nor receive radio communications not available to all boats. This restriction also applies to mobile telephones.

11.8 Return passage from QCYC to Home Clubs

All boats participating in the KISS Rally and returning to their home clubs are required to contact the Rally Director Michael Phelan via sms or email -

- a. On departure from QCYC with Boat name, number of POBs onboard and names of crew.
- b. On arrival of the boat and crew at their home port to confirm their safe return.

12. LOG BOOKS

12.1 All participating boats are required to submit the LogBook of their nominated boat Navigator and the LogBook of their nominated Radio Operator to the QCYC Base Radio Operator on their arrival at QCYC. These LogBooks only will be assessed to determine the winners of Navigator and Radio Operator trophies.

12.2 Boats finishing prior to 1500hrs need to submit their LogBook within one hour of their race finishing time. Boats arriving at QCYC after 1600hrs need to submit their LogBook on berthing at the wharf.

13. SAFETY REGULATIONS

13.1 [Safe Transport Victoria](#) regulations stipulate the mandatory wearing of lifejackets when on deck during times of heightened risk whenever the weather or weather forecast indicates risk.

13.2 Yachts shall keep clear of all commercial shipping (vessels more than 35 metres in length) while within Port Phillip.



PASSAGE RALLY 2024 Sailing Instructions



13.3 In the event of avoiding action becoming necessary, a yacht may start her engine and manoeuvre to avoid a shipping hazard, on a course perpendicular to the ship's track for as long as necessary. This action is to be recorded in the Log Book with position and times of starting and stopping the engine and reported to the Race Director.

13.4 In the event of an incident on the water whilst participating in the Rally, the QCYC Incident Management Protocol (Appendix E) is to be followed.

13.5 Boats fitted with AIS (Automatic Identification of Ships) equipment are required to have the instrument turned on for the duration of the passage.

14. DISCLAIMER OF LIABILITY

14.1 Competitors participate in the rally entirely at their own risk. See rule 3, Decision to Race.

14.2 The organising authority will not accept any liability for material damage or personal injury or death sustained in conjunction with or prior to, during, or after the regatta.

15. INSURANCE

15.1 Each participating boat shall be insured with valid third-party liability insurance with a minimum cover of \$10,000,000 per event or the equivalent.

15.2 This information must be provided to the secretary of QCYC secretary@qcy.org.au upon placement of entry.

16. PROTESTS AND REQUESTS FOR REDRESS

Any protest or request for redress is to be lodged with the QCYC secretary secretary@qcy.org.au no later than 1200hrs on Monday 16 September 2024.

17. FURTHER INFORMATION

Please contact QCYC Rally Director Michael Phelan.

Email: mphelan@bigpond.net.au

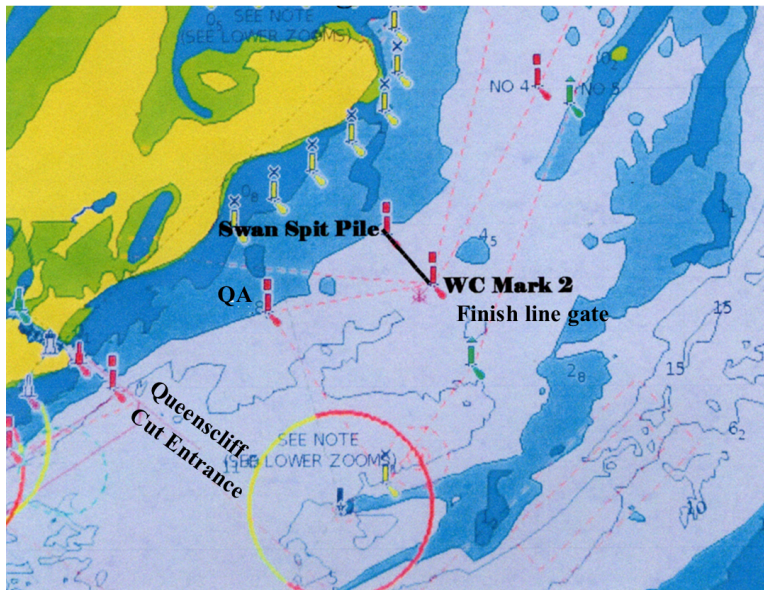
Mobile 0429 982 832

APPENDICES INDEX

Appendix	Content
A	Finish Line
B	Cautions Approaching Queenscliff
C	Vessel Tracking Stations Port Phillip
D	Mandatory Reporting Schedule
E	QCYC KISS Passage Rally Incident Management Plan (see KISS 2024 Notice to Competitors #1)

APPENDIX A – FINISH LINE

7.2 Finish - Swan Spit Gate Diagram.



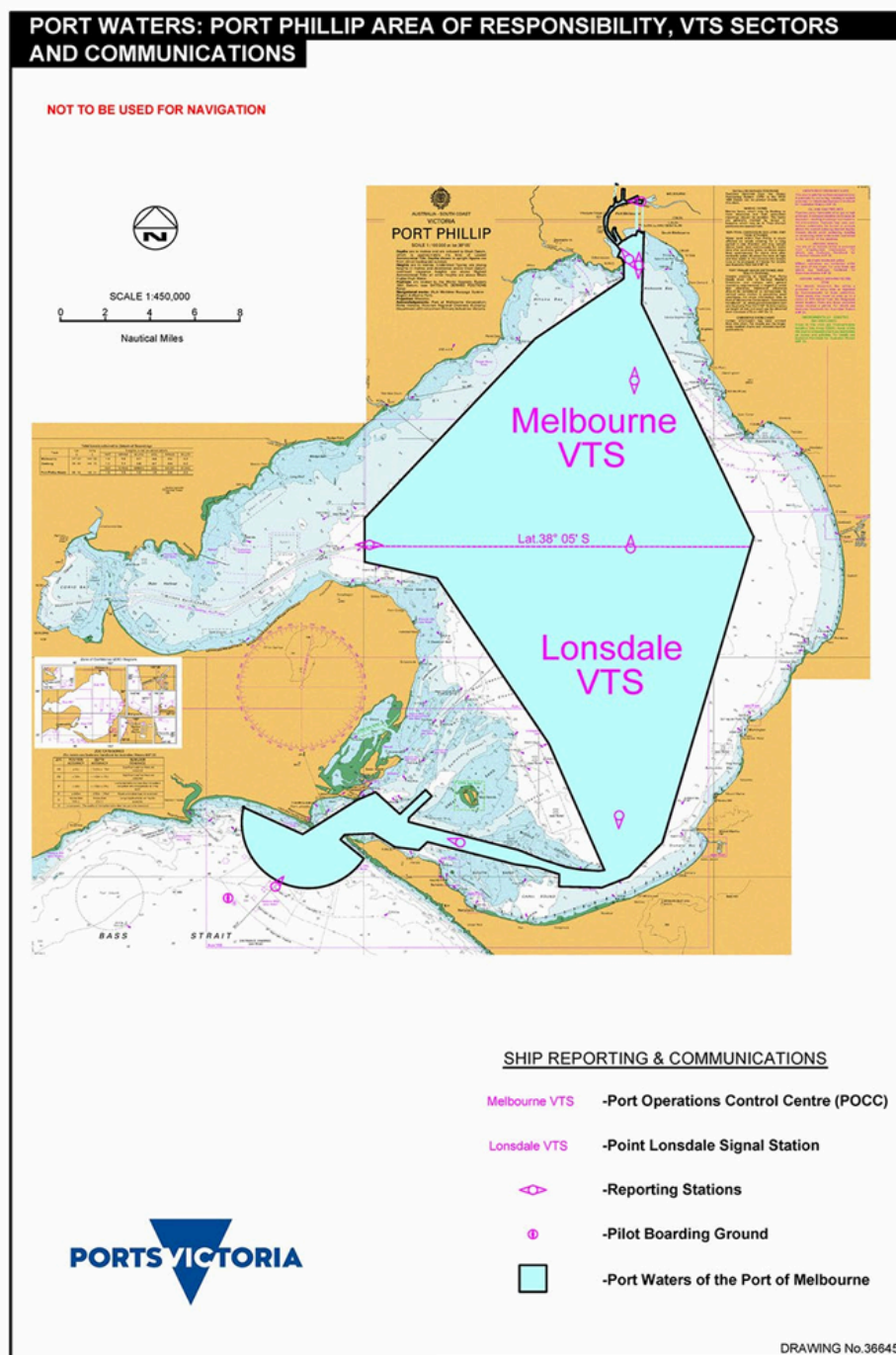
Note, this diagram is for information, not for navigation.

Finish Line Gate	Swan Spit Pile (to starboard)	38° 15.4S 144° 42.15E
	West Channel #2 (to port)	38° 15.6S 144° 42.4E
Queenscliff Approach mark		38° 15.73S 144° 41.47E

APPENDIX B - CAUTIONS APPROACHING QUEENSCLIFF

Beyond the Boat	CAUTIONS
Crossing approach to Geelong channels	Visual watch for ships. Listening watch on VHF12 (Lonsdale VTS) for any shipping heading to or from Geelong.
QA channel marker area	Take down sails. Set up mooring lines and fenders (tied on inside lifelines)
Queenscliff channel	Stay close to the port channel marker as you approach as very shallow water North of the channel
SeaRoad Ferries Queenscliff and Sorrento	Saturday, Sunday (hourly service) 24 & 25 August 2024. Departing Queenscliff - hourly (on the hour) 7am to 6pm Arriving Queenscliff - hourly – (40 minutes after the hour) 7:40am to 5:40 pm. https://www.searoad.com.au/Travel-Alerts
Pilot Boats, Dive boats, Fishing boats	Beware fast moving Pilot boats exiting and entering Queenscliff Harbour (orange or yellow hulls)

APPENDIX C – VESSEL TRACKING SERVICE (VTS) Port Phillip



The areas of operation of Port of Melbourne in Port Phillip are divided by latitude 38°05'S into VTS Melbourne and VTS Lonsdale areas.

When approaching shipping channels and ship anchoring areas, keep a lookout.

If you have concerns re the track of a ship, information about shipping movements can be obtained by calling either Melbourne VTS or Lonsdale VTS on VHF Ch 12 depending on your position.

APPENDIX D - MANDATORY REPORTING for KISS 2024 Passage Rally

Time	Item	Station	VHF Ch
0745	Pre Race Sign on Sked Race Director will call Boats in alphabetical order to confirm “Boat (name) is a starter. (Number) POBs.” Boats to confirm their own determined start time. Boats to give their ETA for the finish line. Boat to notify any crew changes and details. Boats to notify any changes of lead crew roles (helm/navigator/radio operator)	Brighton Tower	73
0825	Warning Signal	Brighton Tower	73
0830	First starters	Brighton Tower	73
0900	Last start	Brighton Tower	73
After 0945	Rally communications switch to VHF 82	Another Chapter	82
	Course 1 - Transit #1 Port Melbourne Channel	Another Chapter	82
	Course 2 - Steamboat Pile (Wilson Spit)	Another Chapter	82
	Course 3 - Virtual (Waypoint 4)	Another Chapter	82
	West Channel Pile gate	Another Chapter	82
	Finish Line gate - Swan Spit	Another Chapter	82
	Post Race - in the vicinity of QA. Call QCYC base for berthing instructions	QCYC Base	82
	Retirement - Boat Radio Operator (BRO) must advise the Race Director (RD) of the time and position of the retirement, the reason for retirement, and the ETA to the intended destination.	Another Chapter	82



Sponsors & Partners

