

**Brighton to Queenscliff  
Saturday 24 August 2024**

**SAILING INSTRUCTIONS**  
**Women Helm, Navigator and Radio Operator Rally**



**Sponsors & Partners**



**The organising authority is Queenscliff Cruising Yacht Club Inc.  
The event is conducted by the Queenscliff Cruising Yacht Club with  
the assistance of the KISS Program**

## **1. RALLY**

1.1 The KISS Passage Rally will be held on the waters of Port Phillip starting in the area of Brighton and sailing to Queenscliff via the West Channel. The start is defined in 4.2 of these Sailing Instructions.

1.2 The Warning Signal for the Rally will be at 0825hrs on Saturday 24 August 2024.

## **2. RULES**

The Rally event will be governed by the current versions of -

2.1 The 2021-24 Racing Rules of Sailing (RRS) of World Sailing (WS)

2.2 The Prescriptions and Special Regulations of Australian Sailing (AS) Category 5

2.3 The Notice of Rally Event, except as amended by these Sailing Instructions.

## **3. NOTICES TO COMPETITORS**

3.1 Any change or amendment to these Sailing Instructions and Notices to competitors will be posted on the [ORCV KISS Training website page](#) and the [Queenscliff Cruising Yacht Club website](#).

3.2 Where possible any such changes may also be communicated by email to the relevant Skipper/Owner prior to 2000hrs on 23 August 2024.

3.4 An online Briefing will be held as an MS Teams webinar on Thursday 22 August 2024 at 1900hrs for all participants.

## **4. THE START**

4.1 The Start shall be in the vicinity of the breakwater from the Royal Brighton Yacht Club Control tower.

4.2 The Rally Director will confirm the position of the start in a broadcast message on VHF 73 at 0730hrs.

4.3 The Warning Signal shall be displayed at 0825hrs but may be postponed at the Rally Director's discretion.

4.4 Boats will determine their own start time taking into account tides, weather and boat performance data. All boats must start between 0830hrs and 0930hrs.

4.5 The time limit for all boats to cross the finish line at Swan Spit will be 1500hrs.

4.6 The start line shall be an imaginary line between the yellow RBYC 6 fixed mark off the breakwater as the port end and the Rally Committee Vessel “Amalfi” (or other nominated Committee Vessel for the day), positioned at the Starboard end of the line,

4.7 The Rally will be started in accordance with Racing Rules of Sailing (RRS) Rule 26.

## 5. CLASS FLAG

The rally Class Flag will be code flag “R”

## 6. THE COURSE

Course	Mark	Leave to	Lat/Long
Start line	Start Line - boat “Amalfi”	Starboard	
	RBYC 6 fixed yellow mark	Port	37°54.3S 144°58.5E approximately
Mark 1	Transit 1 Port Melb Channel	Starboard	38°00.0S 144°55.6E
Mark 2	West Channel Pile	Starboard	38°11.5S 144°45.4E
Gate	West Channel #13	Port	38°11.9S 144°45.9E
Finish line Gate	Swan Spit	Starboard	38°15.7S 144°42.5E
	West Channel #2	Port	38°15.6S 144°42.4E

6.2 Boats will be allowed to use their motor in order to maintain their ETA for the finish line, but must record the time interval for motor sailing in the vessel’s Log Book as to when the motor was started and when it was shut down and the interval time for which it was running.

## 7. THE FINISH

7.1 The Finish Line will be between -

Swan Spit Mark (38°15.7S 144°42.5E) to Starboard and West Channel #2 (38°15.6S 144°42.4E) to Port.

A diagram of the Finish Line Area is in Appendix A

7.2 An alternate finish line may be advised by radio if the Rally Director considers it necessary to shorten course. The alternate Finish Line will be at the West Channel Pile Gate as described above.

7.3 All boats are required to record their own times at both gates in ‘hours–minutes–seconds’

7.4 Following the finish, boats should proceed to the area East of Queenscliff Approach channel marker (38°15.73S 144°41.47E) and call “QCYC Base” on Ch 82 to inform of their approach to Queenscliff and obtain berthing instructions.

7.5 Approaching the Queenscliff Cut, there are several Cautions to be aware of as outlined in Appendix B.

**8. TIME LIMIT**

The time limit for all yachts shall be 1500hrs.

Any yacht finishing after this time shall be scored DNF (amends RRS 35).

**9. RETIREMENT**

9.1 If a boat retires from the rally, the Boat Radio Operator (BRO) must advise the Rally Director of the time and position of the retirement, the reason for retirement, and the ETA to the intended destination.

9.2 Regular radio updates re position are to be maintained until safe arrival at the boat’s destination has been confirmed with the Rally Director

**10. DECLARATION**

Written declarations are not required. A yacht correctly passing through the finish line is deemed to have made a declaration on the part of her skipper that to the best of her knowledge no rules have been breached during the race.

If the skipper is in any doubt they should SMS the Rally Director’s phone 0429 982 832.

**11. RADIO COMMUNICATION**

11.1 Call signs for the event will be as follows –

	Call Sign	VHF Channel
QCYC Rally Director	“Amalfi”	73,82
QCYC Base	“QCYC Base”	82

11.2 Radio communications for the rally will be conducted on VHF Channel 73 from 0730hrs until 0945hrs during the starting window.

11.3 Following the end of the start window at 0945hrs, radio communications will switch to VHF channel 82 for the remainder of the event.

11.4 All yachts are to maintain a listening watch during the event.

11.5 Mandatory position reporting by radio to the Rally Director will be required from all participating boats at the following positions. These position reports are to be recorded in the boat's Log Book.

11.6 Appendix D lists the times and reporting positions in chronological order for purposes of recording information and communications.

<b>Mandatory Reporting</b>	<b>VHF</b>	<b>Call Sign</b>
Pre Race Sign On Sked 0730hrs Boats to call in and confirm "Boat (name) is a starter. (Number) POBs." <ul style="list-style-type: none"> <li>• Boats to confirm their own determined start time.</li> <li>• Boats to give their ETA to the finish line.</li> <li>• Boat to notify any crew changes and details</li> <li>• Boats to notify any changes of lead crew roles (helm/navigator/radio operator)</li> </ul>	73	Amalfi
At Transit #1 Port Melb Channel mark	82	Amalfi
West Channel Pile Gate	82	Amalfi
Finish Gate Swan Spit	82	Amalfi

11.7 Except in an emergency, a boat shall neither make radio transmissions while racing nor receive radio communications not available to all boats. This restriction also applies to mobile telephones.

**11.8 Return passage from QCYC to Home Clubs**

All boats participating in the KISS Rally and returning to their home clubs are required to contact the Rally Director Michael Phelan via sms or email -

- a. On departure from QCYC with Boat name, number of POBs onboard and names of crew.
- b. On arrival of the boat and crew at their home port to confirm their safe return.

**12. LOG BOOKS**

12.1 All participating boats are required to submit their boat's Navigator's LogBook and Radio Operator's LogBook to the QCYC Base Radio Operator on their arrival at QCYC. LogBook entries will be assessed to determine the winners of Navigator and Radio Operator trophies.

12.2 Boats finishing prior to 1500hrs need to submit their LogBook within one hour of their race finishing time. Boats arriving at QCYC after 1600hrs need to submit their LogBook on berthing at the wharf.

## 13. SAFETY REGULATIONS

13.1 [Safe Transport Victoria](#) regulations stipulate the mandatory wearing of lifejackets when on deck during times of heightened risk whenever the weather or weather forecast indicates risk.

13.2 Yachts shall keep clear of all commercial shipping (vessels more than 35 metres in length) while within Port Phillip.

13.3 In the event of avoiding action becoming necessary, a yacht may start her engine and manoeuvre to avoid a shipping hazard, on a course perpendicular to the ship's track for as long as necessary. This action is to be recorded in the Log Book with position and times of starting and stopping the engine and reported to the Race Director.

13.4 In the event of an incident on the water whilst participating in the Rally, the QCYC Incident Management Protocol (Appendix E) is to be followed.

13.5 Boats fitted with AIS (Automatic Identification of Ships) equipment are required to have the instrument turned on for the duration of the passage.

## 14. DISCLAIMER OF LIABILITY

14.1 Competitors participate in the rally entirely at their own risk. See rule 3, Decision to Race.

14.2 The organising authority will not accept any liability for material damage or personal injury or death sustained in conjunction with or prior to, during, or after the regatta.

## 15. INSURANCE

14.1 Each participating boat shall be insured with valid third-party liability insurance with a minimum cover of \$10,000,000 per event or the equivalent.

14.2 This information must be provided to the secretary of QCYC [secretary@qcy.org.au](mailto:secretary@qcy.org.au) upon placement of entry.

## 16. PROTESTS AND REQUESTS FOR REDRESS

Any protest or request for redress is to be lodged with the QCYC secretary no later than 1200hrs on Monday 26 August 2024.

## 17. FURTHER INFORMATION

Please contact QCYC Rally Director Michael Phelan.

Email: [mphelan@bigpond.net.au](mailto:mphelan@bigpond.net.au)

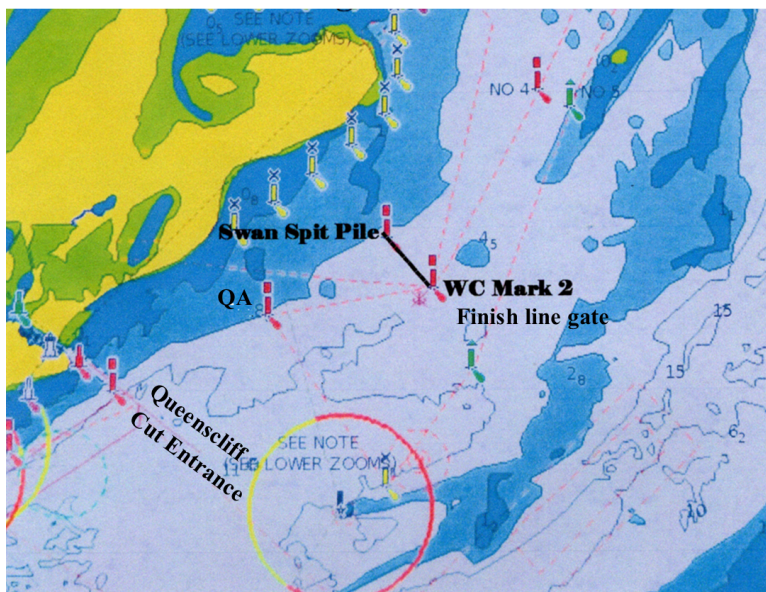
Mobile 0429 982 832

## APPENDICES INDEX

Appendix	Content
A	Finish Line
B	Cautions Approaching Queenscliff
C	Vessel Tracking Stations Port Phillip
D	Mandatory Reporting Schedule
E	QCYC KISS Passage Rally Incident Management Plan (see <a href="#">KISS 2024 Notice to Competitors #1</a> )

## APPENDIX A – FINISH LINE

### 7.2 Finish - Swan Spit Gate Diagram.



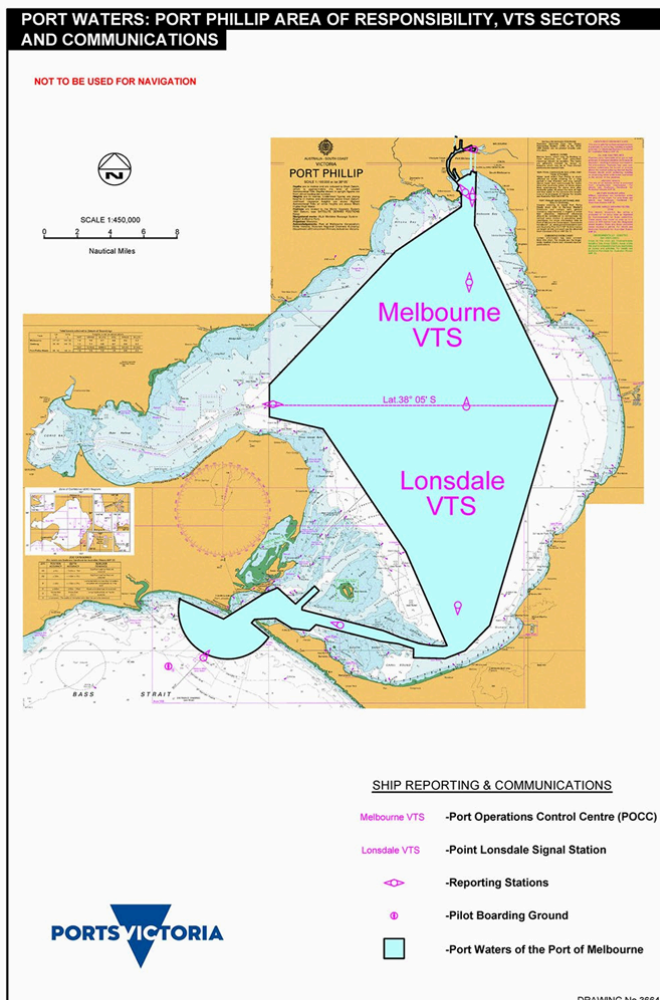
Note, this diagram is for information, not for navigation.

Finish Line Gate	Swan Spit Pile (to starboard)	38°15.4S 144°42.15E
	West Channel #2 (to port)	38°15.6S 144°42.4E
Queenscliff Approach mark		38°15.73S 144°41.47E

## APPENDIX B - CAUTIONS APPROACHING QUEENSCLIFF

Beyond the Boat	CAUTIONS
Crossing approach to Geelong channels	Visual watch for ships. Listening watch on VHF12 (Lonsdale VTS) for any shipping heading to or from Geelong.
QA channel marker area	Take down sails. Set up mooring lines and fenders (tied on inside lifelines)
Queenscliff channel	Stay close to the port channel marker as you approach as very shallow water North of the channel
SeaRoad Ferries Queenscliff and Sorrento	Saturday, Sunday (hourly service) 24 & 25 August 2024. Departing Queenscliff - hourly (on the hour) 7am to 6pm Arriving Queenscliff - hourly – (40 minutes after the hour) 7:40am to 5:40 pm. <a href="https://www.searoad.com.au/Travel-Alerts">https://www.searoad.com.au/Travel-Alerts</a>
Pilot Boats, Dive boats, Fishing boats	Beware fast moving Pilot boats exiting and entering Queenscliff Harbour (orange or yellow hulls)

## APPENDIX C – VESSEL TRACKING STATIONS (VTS) Port Phillip



The areas of operation of Port of Melbourne in Port Phillip are divided by latitude 38°05'S into VTS Melbourne and VTS Lonsdale areas.

When approaching shipping channels and ship anchoring areas, keep a lookout.

If you have concerns re the track of a ship, information about shipping movements can be obtained by calling either Melbourne VTS or Lonsdale VTS on VHF Ch 12 depending on your position.

## APPENDIX D - MANDATORY REPORTING for KISS 2024 Passage Rally

Time	Item	VHF Channel	Station	
0730	Pre Race Sign on Sked Race Director will call Boats in alphabetical order to confirm "Boat (name) is a starter. (Number) POBs." Boats to confirm their own determined start time. Boats to give their ETA for the finish line. Boat to notify any crew changes and details. Boats to notify any changes of lead crew roles (helm/navigator/radio operator)	73	Amalfi	
0825	Warning Signal	73	Amalfi	
0830	First starters	73	Amalfi	
0930	Last start	73	Amalfi	
After 0945	Rally communications switch to VHF 82	82		
	Transist #1 Port Melbourne Channel	82	Amalfi	
	West Channel Pile gate	82	Amalfi	
	Finish Line gate - Swan Spit	82	Amalfi	
	Post Race - in the vicinity of QA. Call QCYC base for berthing instructions	82	QCYC Base	
	Retirement - Boat Radio Operator (BRO) must advise the Race Director (RD) of the time and position of the retirement, the reason for retirement, and the ETA to the intended destination.	82	Amalfi	



### Sponsors & Partners

