



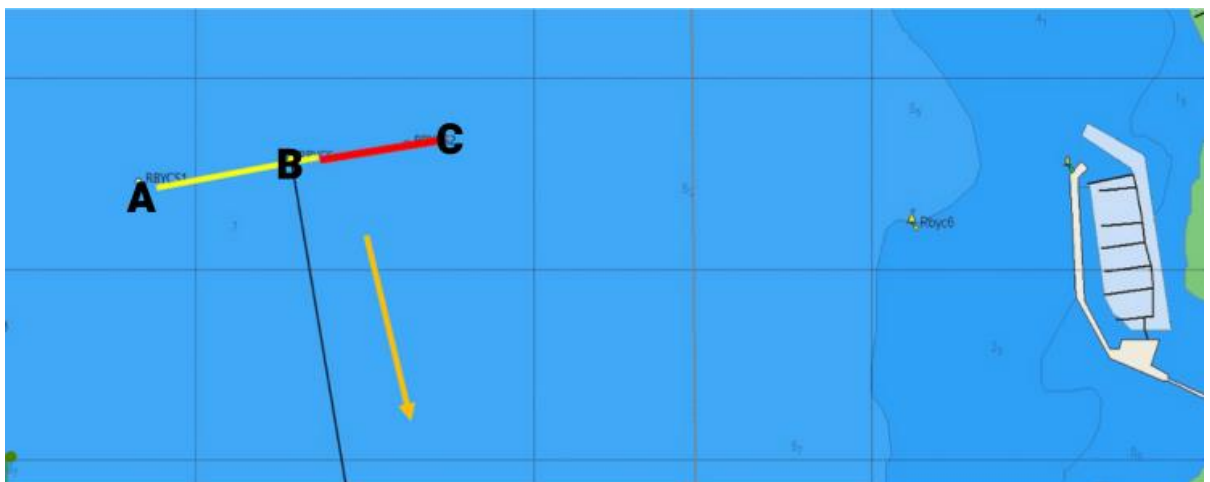
2024 DYSC Marine Supplies Winter Series Race 2 To Blairgowrie

NOTICE TO COMPETITORS No.1: Changes to the Sailing Instructions

Due to the size of the fleet and the current forecast weather conditions, the following changes are made to the Sailing Instructions.

1. Appendix B, B2 - Starting Line

There will be two starting lines, each centred on the Committee Vessel as shown in the diagram below.



The yellow line between A & B as above, will be for Division 1 and the red line as above, between B & C for Division 2. Marks at A & C will be yellow inflatable marks.

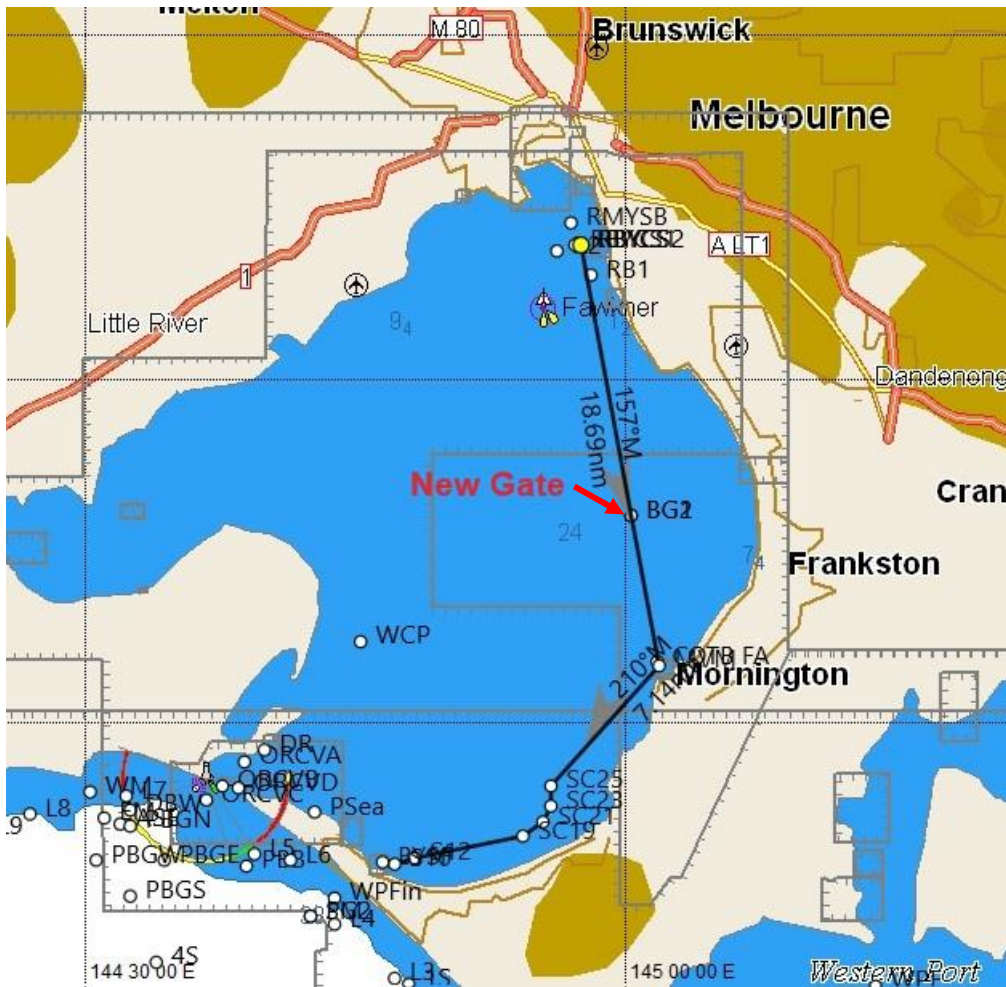
All other provisions of Appendix B, B2 will still apply.

2. Appendix C, C3 - Course to Blairgowrie

The windward gate as defined in C1.1 is deleted.

A new gate, approximately 12NM from the start is added. The position of the gate has the following co-ordinates:

BG1: 38 06.159S / 145 00.402E
BG2: 38 06.144S / 145 00.510E



All boats will pass through the gate in a southerly direction and depending on the wind conditions this gate may be used to shorten the course.

Simon Dryden

Race Director
4th July 2024