

2023-2024

West Offshore Products Coastal Sprint Series

Sailing Instructions



**COASTAL SPRINT
SERIES**

Amendments

Version	Instructions Changed	Summary of Amendment
02	Various 4.2 7.4 A3.3 (new clause) A6.5 A7.1 B1.1 C3.1 Table C4.1	Formatting/minor edits Clarification Clarification Clarification Amend error Amend error Clarification Amend error Amend errors
03	3.1 New Clause 5.2 Table C4.3 Location of Marks	'warning signal" replaced with "start time" Time Limit clarification Mark ASE longitude changed to "E144 32.97". The Latitude remains unchanged.

Copyright © Ocean Racing Club of Victoria,
Inc 2023

All enquiries to:

Ocean Racing Club of Victoria, Inc
 3 Aquatic Drive
 ALBERT PARK VIC 3206
 Australia

Contents

Sailing Instructions 4

1. Rules4

2. Notices to Competitors.....4

3. The Start and Starting times.....5

4. The Course5

5. The Finish5

6. Protests and Requests for Redress.....5

7. Penalty System6

8. Yachts retiring6

9. Safety regulations6

10. Unsuitable Conditions7

11. Race Communications7

12. Disclaimer of Liability7

13. Crew Behaviour7

14. Appendices8

Sailing Instructions

The 2023-24 West Offshore Products Coastal Sprint Series Races will be conducted on the waters of Port Phillip and Bass Strait. The races are organised and conducted by the Ocean Racing Club of Victoria and in accordance with the Notice of Race.

1. Rules

- 1.1. The rules for these races shall be:
- The 2021-2024 Racing Rules of Sailing (RRS) of World Sailing (WS),
 - The Prescriptions and Special Regulations of Australian Sailing (AS),
 - The Special Regulations of the Ocean Racing Club of Victoria (ORCV),
 - Where a yacht is entered under AMS, the rules and regulations of the Australian Measurement System (AMS),
 - Where a yacht is entered under ORC, the rules and regulations of the Offshore Rating Congress (ORC),
 - The Convention on the International Regulations for Preventing Collisions at Sea, 1972 (Col Regs),
 - The Notice of Race,
- except as amended by these Sailing Instructions.
- 1.2. All times in these Sailing Instructions are Australian Eastern Standard Time (AEST) unless otherwise stated.
- 1.3. Between the hours of Sunset and Sunrise, RRS 10 to 22 inclusive shall cease to be applicable and shall be replaced by the Col Regs.
- 1.4. For the purpose of these races, the times of Sunrise and Sunset shall be as follows:

Race	Start Date	Sunrise	Sunset	Zone
1	Saturday 16 September 2023	0618	1810	AEST
2	Saturday 25 November 2023	0553	2020	AEDT
3	Saturday 20 April 2024	0652	1746	AEST

2. Notices to Competitors

- 2.1. Notices to competitors will be posted on the ORCV website (www.orcv.org.au).
- 2.2. Any change to the Sailing Instructions may be posted on the ORCV website. Any such alterations will be announced after the Sign On Schedule or during the Shipping Advice Broadcast as detailed in **Appendix A Race Communications**.

3. The Start and Starting times

- 3.1. The start is as described in **Appendix B: Start**. Unless otherwise notified, race start times will be as shown below.

Race	Start times	Start signal	Zone
1	Saturday 16 September 2023	0900	AEST
2	Saturday 25 November 2023	0700	AEDT
3	Saturday 20 April 2024	1000	AEST

4. The Course

- 4.1. The courses are as described in **Appendix C: Courses**.
- 4.2. Please note these courses include mostly virtual marks and, as part of a validation process, competitors are required to record all rounding/passing times (with the exception of the Heads Exclusion marks) and supply these if requested by the Race Director as part of their Race Declaration.

5. The Finish

- 5.1. The finish is as described in **Appendix D: Finish**.
- 5.2. The Time Limit for all yachts in a race shall be Sunset as defined in clause 1.4. Any yacht that has not finished by Sunset shall be scored as DNF (amends RRS 35).

6. Protests and Requests for Redress

- 6.1. Protests or requests for redress are to be lodged with an official of the ORCV or emailed to the ORCV office no later than 1200 on the Monday following the relevant race in the series.
- 6.2. A yacht intending to protest or request redress shall inform the Race Director giving any details as may be known at the time using their declarations, on a protest form sent by Email or by SMS in accordance with clause A2.2 and A2.3.
- 6.3. Protests or requests for redress will be heard at a time and place to be advised.
- 6.4. All requests for redress involving the official time sheet must be submitted as soon as possible after the posting of the results but no later than 1200 on the Monday following the relevant Race in the series.
- 6.5. The protest committee shall not be entitled to abandon a race as a consideration for redress (amends RRS 64.2).

7. Penalty System

- 7.1. If, after a protest and hearing, a yacht is found to have infringed a rule, the protest committee may disqualify or otherwise penalise the yacht in accordance with the provisions of RRS 64.
- 7.2. The protest committee may apply a time penalty for a breach of a rule or the Sailing Instructions declared by an infringing competitor without a hearing or after a hearing if a protest is contested.
- 7.3. The following penalties will be applied for breaches of these Sailing Instructions or the Racing Rules of Sailing (RRS), including any modification noted in the Notice of Race, at the discretion of the Protest Committee:

Breach	Penalty
For a minor infringement	15 minutes
For a significant infringement	60 minutes
For a serious infringement	the penalty will rest with the Protest Committee and may result in a time penalty or disqualification.

- 7.4. All penalties will be noted by the race director and shall be applied to finishing times. Race results will be adjusted after penalties are applied (complements RRS 64.1 and amends RRS 44.3).

8. Yachts retiring

- 8.1. Yachts retiring shall inform the Race Director as described in A12 Yachts Retiring.

9. Safety regulations

- 9.1. The Safety Category and regulations are as set out in the Notice of Race.
- 9.2. No anchor shall be carried on deck forward of the stem or with any part protruding outboard.
- 9.3. The ORCV strongly recommends that safety harnesses and suitable lifejackets be worn whenever conditions warrant, particularly in rough weather, at night or when sailing short-handed.
- 9.4. The crew of yachts sailed Double Handed shall wear lifejackets at all times when on deck.
- 9.5. In particular, attention is drawn to Victorian regulations which stipulate the mandatory wearing of lifejackets when on deck during times of heightened risk. This includes crossing a bar, transiting the Heads, sailing at night and when the weather or weather forecast indicates risk. For full details, consult the Transport Safety Victoria website (www.transportsafety.vic.gov.au).
- 9.6. Yachts shall keep clear of all commercial shipping (vessels more than 35 metres in length) while within Port Phillip and particularly while transiting Port Phillip Heads, as required by Port of Melbourne Corporation Harbour Master's Directions. Ships are restricted in their ability to manoeuvre while entering Port Phillip and yachts should take any necessary avoiding action early.
- 9.7. In the event of avoiding action becoming necessary, a yacht may start its engine and motor to avoid a shipping hazard, on a course perpendicular to the ship's track for as long as necessary.

- 9.8. A yacht that takes such action shall return to the location they started motoring, cease motoring and resume racing as soon as possible. The details of any such action must be reported to the Race Director on the Declaration after finishing.
- 9.9. Attention is drawn to Rule 9 (a) and Rule 9 (b) of the Col Regs, and yachts shall hold to any course and directions prescribed during the Shipping Advice Broadcast. Yachts found to have impeded the progress of a commercial vessel will be disqualified.
- 9.10. A yacht or its equipment may be inspected at any time for compliance with the ORCV safety rules and sailing instructions.
- 9.11. The Race Director may, at their absolute discretion, disqualify a yacht from participating or continuing to participate in any race in the series if they believe that it is unsafe for that yacht to commence or continue to race.

10. Unsuitable Conditions

- 10.1. After commencement of a race, the race can be terminated at the Race Director's discretion.
- 10.2. The Race Committee may deem a race to be abandoned, rescheduled to another time or shortened. Arrangements for shortening course are detailed in **Appendix C**.
- 10.3. Prorated positions may be used to determine a result for a race and/or for the series.
- 10.4. Termination of a race will be advised by radio on VHF Channel 82.

11. Race Communications

- 11.1. Race communications procedures are detailed in **Appendix A: Race Communications**.

12. Disclaimer of Liability

- 12.1. All those taking part in a race do so at their own risk and responsibility.
- 12.2. Acceptance of a yacht as an entrant in a race is not to be taken as express or implied acceptance on the part of the ORCV and/or any of its Flag Officers, committee members, Equipment Auditors or any other members, of the fitness of any yacht or any equipment on such yacht to safely compete in a race, and/or deal with any and all eventualities of the contemplated passage. It is the responsibility of each skipper of each competing yacht to decide whether their yacht is fit and suitably crewed for the intended purpose, and neither the ORCV nor any club, person or company connected with the organisation of the races is responsible for the seaworthiness of any yacht whose entry is accepted.
- 12.3. Attention is drawn to Fundamental Rule 3 "Decision to Race" of the RRS which states:
The responsibility for a boat's decision to participate in a race or to continue racing is theirs alone.

13. Crew Behaviour

- 13.1. All participants are reminded that they are expected to comply with ORCV's Member Protection Policy and Code of Conduct. For more information refer to <https://www.orcv.org.au/club/member-and-participant-protection>

- 13.2. Skippers are reminded that crew behaviour is both the skipper and all the crew's responsibility to manage, at all times including during any deliveries or pre and post race social events.

14. Appendices

- 14.1. The following Appendices A, B, C, D and E form part of these Sailing Instructions.

Appendix A: Race Communications

This appendix describes the radio and other communications procedures to be followed during each race.

A1 General

- A1.1. While racing, a yacht shall neither make nor receive radio communications not available to all yachts. This restriction also applies to mobile phones and satellite phones.
- A1.2. AIS transponders shall be switched on in transmit mode with boat name and MMSI displayed at all times during each race and return through the Heads.
- A1.3. It is compulsory for yachts to respond to all scheduled radio and SMS communications, including the Sign-On Schedule and the Position Schedules.
- A1.4. Yachts shall not give false or misleading position reports.
- A1.5. Yachts shall not interfere with operation of any tracking units.
- A1.6. Yachts shall monitor VHF Channel 16 at all times when not actually using the radio with other channels. **If standing by on another VHF channel, yachts shall still maintain a continuous listening watch on VHF Channel 16 by a suitable method such as dual watch or scanning or multiple radios.**

A2 Race Frequency

- A2.1. The following VHF channels shall be used:

VHF Channel	Usage
82	Race Communications other than Shipping Advice Broadcast and Premature Starters
12	Shipping Advice Broadcast and premature starter advice
16	Distress & Calling
67	Working, Maritime safety Information

- A2.2. The following phone numbers shall be used:

Number	Usage
0418 396 605	Race Director's Phone

- A2.3. The following email address shall be used for any email communications with the Race Director:

Email	Usage
race.director@orcv.org.au	Race director messages

A3 Crew Changes

- A3.1. Late crew changes shall be notified by updating the Topyacht Entry System up until **2359 on the Wednesday** before a race. Following that, they shall be notified by calling or SMS to the Race Director's phone in accordance with A2.2.
- A3.2. When nominating additional crew, the following details are required to be entered in the online entry system: name of crew member, address, age, Australian Sailing membership number, and next of kin details including relationship to crew member, contact address and phone number.
- A3.3. Following a crew change, the requirements of the Notice of Race must still be met.

A4 Pre Race Monitoring, Sign On Schedule and Course Selection

- A4.1. Yachts shall monitor VHF Channel 82 for pre race communications and any changes to Sailing Instructions including radio frequencies. Refer A13 for further details.
- A4.2. The Sign On schedule will be conducted on Channel 82. The selected course for a race will be announced at the commencement of the sign on schedule and again at the end of the first call of the yachts. Refer A13 for further details.
- A4.3. Yachts will be called in alphabetical order to confirm that they are starters in a race. If intending to race, yachts shall reply

***"{yacht name} is a starter, we comply with the Notice of Race,
{xx} persons on board, OVER".***

- A4.4. Yachts that do not respond on the first call shall wait until they are re-called at the end of the schedule.
- A4.5. Any yacht failing to respond during this schedule shall not be considered a starter in the race and shall be scored DNC.
- A4.6. In case of difficulties, yachts shall contact the Race Director via a phone call or SMS text message to 0418 396 605.

A5 Shipping Advice Broadcast

- A5.1. Ocean Racing will broadcast advice of shipping movements through Port Phillip Heads on VHF Channel 12. This will include confirmation if the Pilot Boarding Ground exclusion zone is to be used. Refer A13 for further details.
- A5.2. All yachts are required to monitor this broadcast and maintain a listening watch on VHF Channel 12 until they are three nautical miles outside Port Phillip Heads. Lonsdale VTS and any shipping transiting the Heads will be monitoring this frequency as well.
In addition, yachts shall still maintain a continuous listening watch on VHF Channel 16.
- A5.3. Yachts may cease monitoring VHF Channel 12 when three miles clear of the Heads and revert to monitoring VHF Channel 82.

A6 Premature Starters

- A6.1. Premature starters may be identified on VHF Channel 12.

A7 Position Reporting Schedules

- A7.1. Position Reports have been scheduled commencing at times defined in **Table A13**. One or more of these schedules may be deleted by the Race Director if not required for course shortening purposes.
- A7.2. Yachts, called in alphabetical order on VHF Channel 82 by Ocean Racing, shall report their position at the start of the relevant position reporting schedule in degrees and whole minutes only.

{Yacht Name} Position {ddmm dddmm} OVER

A8 Shortened Course Announcement(s)

- A8.1. Decisions by the Race Director to shorten course shall be announced during the Position Reporting Schedules as appropriate.

A9 Finishing Report

- A9.1. Unless shorten course applies, yachts shall call Ocean Racing on Channel 82 as they pass through the finishing gate which is located approximately 2 miles before the finish.
- A9.2. A further call shall be made on Channel 82 as yachts cross the finish line in accordance with the finishing procedures set out in **Appendix D** and yachts shall then stand by on Channel 82 ready to receive any information which may be provided by ORCV regarding conditions at the entrance to Port Phillip Bay.

A10 Ad Hoc Communications

A10.1. Ocean Racing will monitor the race frequency, VHF repeater Channel 82 as much as possible..

A10.2. A yacht needing to make emergency contact at any time should call the Joint Rescue Co-Ordination Centre Australia (JRCC) or Marine Radio Victoria using the standard VHF or HF calling frequencies listed in the following table.

Frequency	AMSA/JRCC	Marine Radio Victoria
VHF 16	N/A	24*7
VHF 67	N/A	24*7
VHF 70 (DSC)	N/A	24*7
4125 kHz	Night	Any time
6215 kHz	Day or Night	Any time
8291 kHz	Day	Any time
12290 kHz	Day	N/A

Note: these frequencies are also distress frequencies. For longer communications, a switch to another frequency may be required once communications have been established.

A10.3. In addition, the following phone numbers are available for **emergency** use by mobile or satellite phone.

Number	Purpose
112 or 000	Emergency services
1800 641 792	Search and rescue, Medical advice
+61 2 6230 6811	AMSA / JRCC

A10.4. If you have issued either a **MayDay** or a **Pan Pan**, please activate your boat EPIRB to enable AMSA / JRCC to determine and monitor your position.

A11 Radio Failure

A11.1. In the event of VHF radio failure yachts shall contact the Race Director by mobile phone.

A12 Yachts Retiring

A12.1. Should a yacht retire from the race, advise Ocean Racing as soon as possible to give the following information:

- Time & position at the time of retirement

- Reason for retirement
- The state of the crew
- The port to which the yacht is retiring.

A12.2. Yachts that retire shall continue to monitor the race frequency and respond to any radio messages from Ocean Racing until such time as they reach a safe harbour.

A12.3. Within two hours of arrival at a safe harbour, contact shall be made with ORCV (Ocean Racing) by radio or the Race Director's phone to confirm safe arrival.

A12.4. Failure to comply with this requirement may prejudice acceptance of an entry in future races.

A13 Summary

Race 1 – 16th September, 2023

Date	Time (AEST)	Action	Channel	Station	Ref
Friday 15th September	1800 to 2000	Crew Changes	0418 396 605	Ocean Racing	SI A3
Saturday 16th September	0700-0800	Pre Race Monitoring	VHF Channel 82	Ocean Racing	SI A4
Saturday 16th September	0745-0800	Announcement of Course Selection Sign-On Schedule and monitor.	VHF Channel 82	Ocean Racing	SI A4
Saturday 16th September	0845	Shipping Advice and confirmation of Pilot Boarding Ground Exclusion zone	VHF Channel 12	Ocean Racing/VTS	SI A5
Saturday 16th September	0855-0900	Starting Sequence	VHF Channel 12	Start Boat	SI B4.1
Saturday 16th September	0900	Individual recalls may be notified	VHF Channel 12	Start Boat	SI B4.2
Saturday 16th September	1200	Position Report, Shorten Course	VHF Channel 82	Ocean Racing	SI A7, A8
Saturday 16th September	1500	Position Report, Shorten Course	VHF Channel 82	Ocean Racing	SI A7, A8
Saturday 16th September	On passing finish gate	Report	VHF Channel 82	Ocean Racing	SI A9
Saturday 16th September	Finishing	Report and continue to monitor radio	VHF Channel 82	Ocean Racing	SI A9

Race 2 – 25th November 2023

Date	Time (AEDT)	Action	Channel	Station	Ref
Friday 24th November	1800 to 2000	Crew Changes	0418 396 605	Ocean Racing	SI A3
Saturday 25th November	0500-0545	Pre Race Monitoring	VHF Channel 82	Ocean Racing	SI A4
Saturday 25th November	0545-0630	Announcement of Course Selection Sign-On Schedule and monitor.	VHF Channel 82	Ocean Racing	SI A4
Saturday 25th November	0645	Shipping Advice and confirmation of Pilot Boarding Ground Exclusion zone	VHF Channel 12	Ocean Racing/VTS	SI A5
Saturday 25th November	0655-0700	Starting Sequence	VHF Channel 12	Start Boat	SI B4.1
Saturday 25th November	0700	Individual recalls may be notified	VHF Channel 12	Start Boat	SI B4.2
Saturday 25th November	1100	Position Report, Shorten Course	VHF Channel 82	Ocean Racing	SI A7, A8
Saturday 25th November	1400	Position Report, Shorten Course	VHF Channel 82	Ocean Racing	SI A7, A8
Saturday 25th November	On passing finish gate	Report	VHF Channel 82	Ocean Racing	SI A9
Saturday 25th November	Finishing	Report and continue to monitor radio	VHF Channel 82	Ocean Racing	SI A9

Race 3 – 20th April 2024

Date	Time (AEST)	Action	Channel	Station	Ref
Friday 19th April	1800 to 2000	Crew Changes	0418 396 605	Ocean Racing	SI A3
Saturday 20th April	0800-0845	Pre Race Monitoring	VHF Channel 82	Ocean Racing	SI A4
Saturday 20th April	0845-0900	Announcement of Course Selection Sign-On Schedule and monitor.	VHF Channel 82	Ocean Racing	SI A4
Saturday 20th April	0945	Shipping Advice and confirmation of Pilot Boarding Ground Exclusion zone	VHF Channel 12	Ocean Racing/VTS	SI A5
Saturday 20th April	0955-1000	Starting Sequence	VHF Channel 12	Start Boat	SI B4.1
Saturday 20th April	1000	Individual recalls may be notified	VHF Channel 12	Start Boat	SI B4.2
Saturday 20th April	1300	Position Report, Shorten Course	VHF Channel 82	Ocean Racing	SI A7, A8
Saturday 20th April	1600	Position Report, Shorten Course	VHF Channel 82	Ocean Racing	SI A7, A8
Saturday 20th April	On passing finish gate	Report	VHF Channel 82	Ocean Racing	SI A9
Saturday 20th April	Finishing	Report and continue to monitor radio	VHF Channel 82	Ocean Racing	SI A9

Appendix B: Start

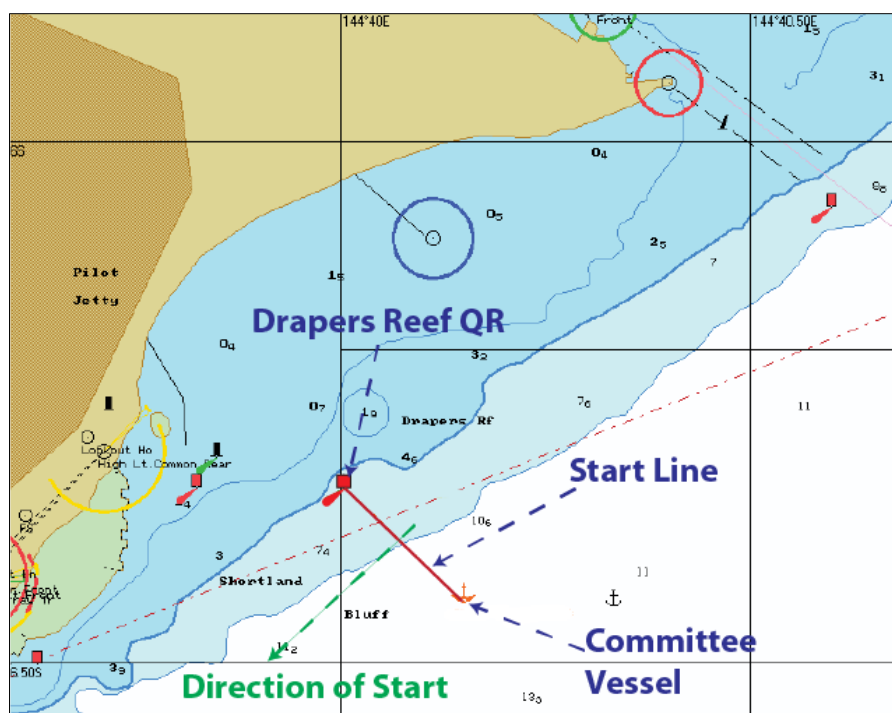
This appendix contains information about the starting line and the starting procedures. Note: The positions for physical marks shown in these diagrams are approximate and for illustrative purposes only. The diagrams should not be used for navigation and the positions shown may vary on the day

B1 Start Time

- B1.1. The starts will be in the vicinity of Drapers Reef, Queenscliff unless noted otherwise. The Race Director may, at their discretion, postpone to another time and/or move the start to the Alternative Starting Line.
- B1.2. Yachts may elect to start up to 30 minutes after the start signal.

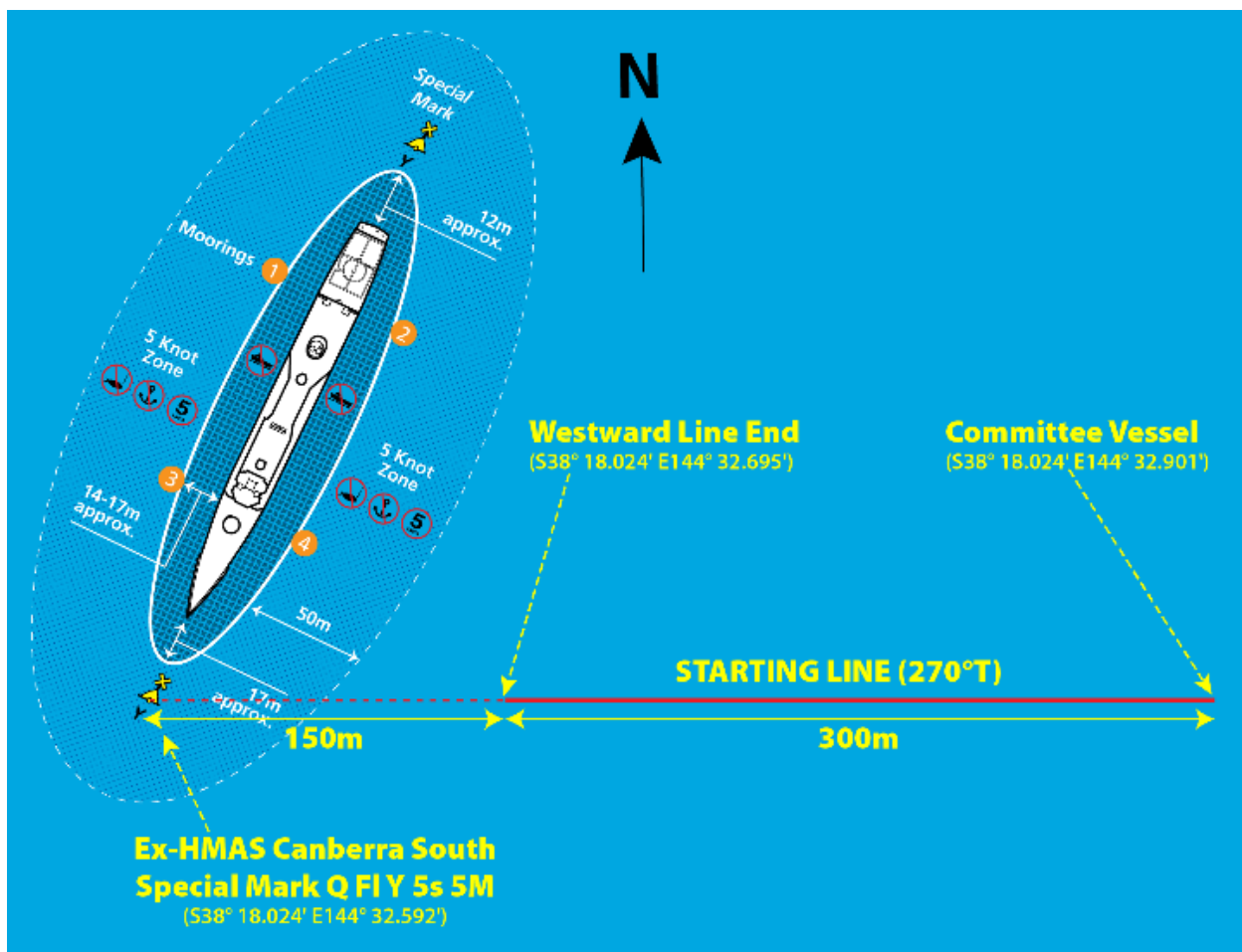
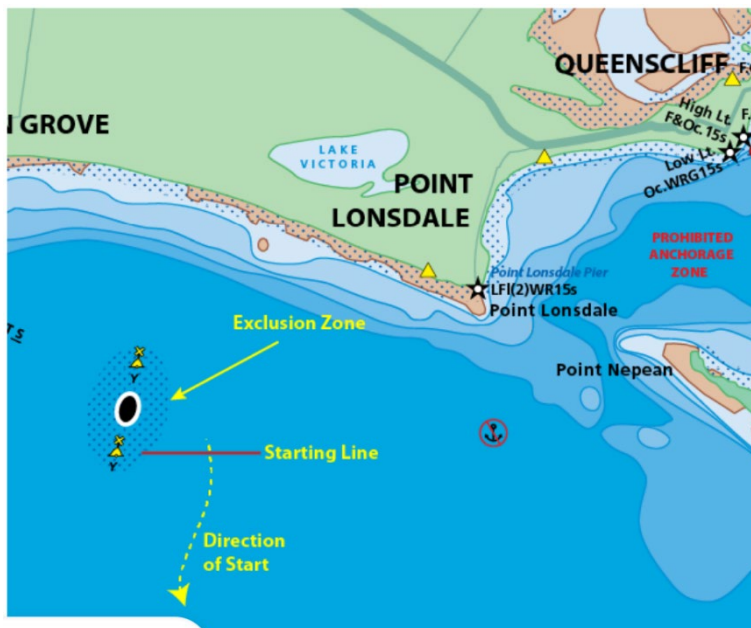
B2 Starting Line

- B2.1. The Starting Line shall be an imaginary line between a Quick Flashing Red (QR) Light on the Drapers Reef Pile and a vessel or a buoy with a rotating blue light approximately 300 metres to the southeast.
- B2.2. In the event of rough weather or other unforeseen difficulties, the vessel or buoy may not be in position. In this case the starting line will be an extension of an imaginary line from a rotating amber light on shore and the Draper's Reef Light, this line running almost east to west to a distance not exceeding 400 metres.
- B2.3. Yachts shall start in a South-Westerly direction.



B3 Alternative Starting Line

- B3.1. If the Race Director determines it necessary, the Alternative Starting Line may be announced by the Race Director.
- B3.2. If the Alternative Starting Line is to be used, this will be announced at the Sign-On Schedule along with a revised start time to enable competitors to reach the start location.
- B3.3. The Alternative Starting Line shall be an imaginary line beginning 150m to the East of the Quick Flashing Special Mark (Q FI Y 5s 5M) at the seaward end of the Ex-HMAS Canberra Dive Site and a vessel with a rotating blue light approximately 450 metres to the East.
- B3.4. The Quick Flashing Special Mark is located at approximately S38° 18.024' E144° 32.592'. The inner (westward) end of the starting line is at approximately S38° 18.024' E144° 32.695'. The outer (eastward) end of the starting line is at approximately S38° 18.024' E144° 32.901'.
- B3.5. After clearing the Heads on the way to the start, yachts will set their radios to VHF Channel 82 in case further instructions need to be given to the fleet. All such notices will be given on VHF Channel 82 until the start has completed.
- B3.6. If the start vessel is unable to be present, the start sequence will be conducted by radio on VHF Channel 82.



B4 Start Procedure

- B4.1. Races will be started using the following signals with flares replacing flags as visual signals.

5 Minutes before start	Warning Signal (white flare)
Start	Starting Signal (green flare)

There will be no Preparatory or One Minute signals (amends RRS 26).

- B4.2. Individual recalls may be signalled by one white flare. Premature starters may be identified on VHF Channel 12 (amends RRS 29.1).
- B4.3. There will be no General Recall (amends RRS 29.2).

B5 Postponements

- B5.1. A postponement may apply at the sole discretion of the Race Director.
- B5.2. Postponements will be announced on VHF Channel 82 before the Sign-On Schedule. If the timing is appropriate, an SMS may also be sent to each yacht on their primary registered contact phone. (Amends RRS 27.3).

Appendix C: Courses

This appendix describes the courses and how they are to be sailed. Note: The positions given for physical marks are approximate and the diagrams should not be used for navigation purposes. Note also that the position of some buoys used as marks of the course are subject to change.

C1 Overview

- C1.1. Six courses are offered for this race, each with one or more “shorten course” options. The courses range between 27NM and 53NM miles in length, reducing under the various shorten course options. In summary the courses include:
- The Westernport and Split Point courses used in previous Coastal Sprints but with minor amendments and additional Shorten Course options; and
 - Four “triangular” courses using the central, eastern and western sections of the course area.
- C1.2. Course diagrams are provided at the end of this Appendix for visualisation purposes. If a discrepancy exists between the diagrams and **Table C4.1** then **Table C4.1** takes precedence.

C2 Announcement of Course to be sailed

- C2.1. The Race Director will announce the course to be sailed at the beginning of the Sign On schedule and again at the conclusion of the first call of the yachts. This announcement may include a decision to use the Alternative Start but will not limit the Race Director’s right to shorten course during the race.

C3 Shorten Course options

- C3.1. The Race Director may shorten course by:
- deleting one or more marks of the course, OR
 - relocating the finish line in accordance with clause D7.4, OR
 - finishing the race at any mark of the course, OR
 - any combination of the above
- C3.2. Decision(s) to shorten course will be announced at the Sign On or at a preceding position reporting schedule in accordance with Clause A8.

C4 Course Detail

- C4.1. For races starting in Port Phillip Bay the Courses are given in Table C4.1 on the following page.

Table C4.1

West Offshore Products Coastal Sprint Series Courses (Distances are Approximate)

Course 1 Westernport		Course 2 Centre		Course 3 Eastern		Course 4 Short Eastern		Course 5 Western		Course 6 Split Point	
Mark	Passed to	Mark	Passed to	Mark	Passed to	Mark	Passed to	Mark	Passed to	Mark	Passed to
Start		Start		Start		Outer Start		Start		Start	
ORCVA	Port	ORCVA	Port	ORCVA	Port	Mark ASE	Port	ORCVA	Port	ORCVA	Port
ORCVB	Port	ORCVB	Port	ORCVB	Port	Gate P		ORCVB	Port	ORCVB	Port
ORCVC	Port	ORCVC	Port	ORCVC	Port	Mark 4	Starboard	ORCVC	Port	ORCVC	Port
Mark 1	Starboard.	Mark 1	Starboard.	Mark 1	Starboard.	PBGW	Starboard	Mark 6	Starboard.	PBGN	Port.
Mark 2	Starboard.	Mark 4	Starboard.	Mark 2	Starboard.	Gate C		Mark 7	Starboard.	Mark 5	Port
Mark 3	Port	Mark 5	Starboard.	Mark 6	Starboard.	Finish		Mark 5	Starboard.	SPI	Port
WPF	Port	Gate C		PBGW	Starboard.			Gate C		SPO	Port
Gate P		Finish		Gate C				Finish		Gate C	
Finish				Finish						Finish	
Max Dist.	53NM		51NM		52NM		27NM		52NM		49NM

C4.2. In the event that the Alternative Starting Line is used

- the requirement to pass the Heads Exclusion Zone marks (ORCVA ,B & C) to port is deleted; and
- additional mark ASE is added prior to Mark 1 in the Westernport, Central and Eastern courses.

C4.3. The location of marks is given in Table C4.3. See Appendices B and D for the location of start and finish lines. Note All marks are virtual marks except WPF

Table C4.3 - Location of Marks

Mark	Latitude	Longitude	Notes
ORCVA	S38° 16.90'	E144° 38.90'	Exclusion Zone boundary
ORCVB	S38° 17.95'	E144° 37.76'	Exclusion Zone boundary
ORCVC	S38° 18.50'	E144° 36.80'	Exclusion Zone boundary
ORCVD	S38° 18.00'	E144° 38.67'	Exclusion Zone boundary
ASE	S38° 19.53'	E144 32.97'	Alternative Start Extra Mark
PBGN	S38° 19.69'	E144° 32.60'	Pilot boarding Ground - North
PBGS	S38° 22.69'	E144° 32.60'	Pilot boarding Ground - South
PBGE	S38° 21.19'	E144° 34.51'	Pilot boarding Ground - East
PBGW	S38° 21.19'	E144° 30.69'	Pilot boarding Ground - West
Mark 1	S38° 26.56'	E144° 48.12'	
Mark 2	S38° 28.58'	E144° 51.20'	
Mark 3	S38° 30.38'	E144° 56.23'	
Mark 4	S38° 25.63'	E144° 34.00'	
Mark 5	S38° 24.52'	E144° 19.36'	
Mark 6	S38° 33.50'	E144° 35.19'	
Mark 7	S38° 36.50'	E144° 34.94'	
SPI	S38° 28.14'	E144° 09.50'	Split Point Inner Rounding Mark
SPO	S38° 28.14'	E144° 10.00'	Split Point Outer Rounding Mark
WPF	S38° 30.21'	E145° 05.38'	Westernport Fairway Buoy

Mark	Latitude	Longitude	Notes
Gate P - between NM & SM			Gate for Portsea Back Beach Finish
NM	S38° 22.800'	E144° 43.950'	northern mark of Gate
SM	S38° 23.600'	E144° 42.640'	southern mark of gate
Gate C – between WM & EM			Gate for Canberra Wreck Site Finish
WM	S38° 18.566'	E144° 30.396'	western mark of gate
EM	S38° 19.259'	E144° 31.181'	eastern mark of gate

C5 Heads Exclusion Zone

- C5.1. Yachts are required to keep out of the main channels in Port Phillip Heads and to avoid obstructing shipping.

The area bounded by the following locations, shown in the diagram below, is an obstruction:

Mark	Position	Description
ORCVA	S38° 16.90' E144° 38.90'	Shortland Bluff
ORCVB	S38° 17.95' E144° 37.76'	Heads Exit
ORCVC	S38° 18.50' E144° 36.80'	Channel Clearing
ORCVD	S38° 18.00' E144° 38.67'	Big Rock

- C5.2. Yachts shown to have sailed within the bounds of this obstruction may be protested and may be penalised as described in SI 7.3.
- C5.3. Yachts are required to record their track through the heads using their chart plotter or similar device, and to take a photograph of this track to demonstrate compliance with the Heads Exclusion Zone. This photograph shall be submitted to the Race Director if requested in accordance with D5.3.

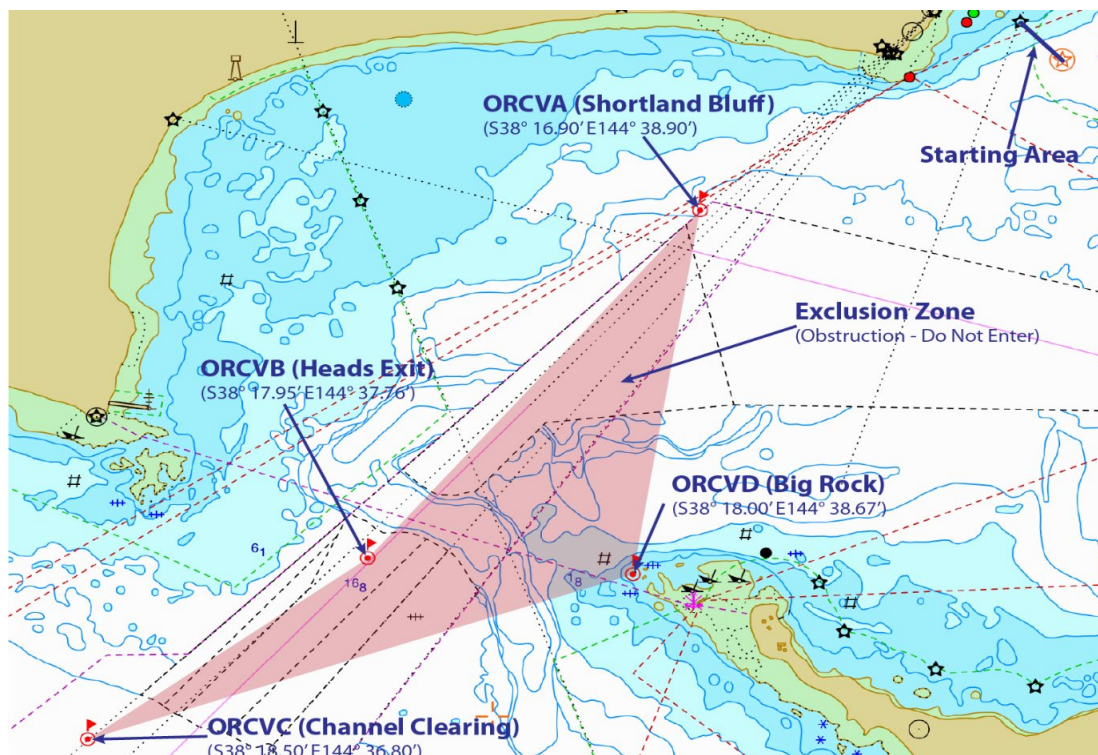
C6 Pilot Boarding Ground Exclusion Zone

- C6.1. Yachts are required to keep out of the Pilot Boarding Ground outside the Port Phillip Heads to avoid obstructing the pilot boats and shipping.
- C6.2. This exclusion zone will be confirmed via VHF radio during the shipping advice on channel 12.
- C6.3. The area is bounded by the following locations, also shown in the diagram below:

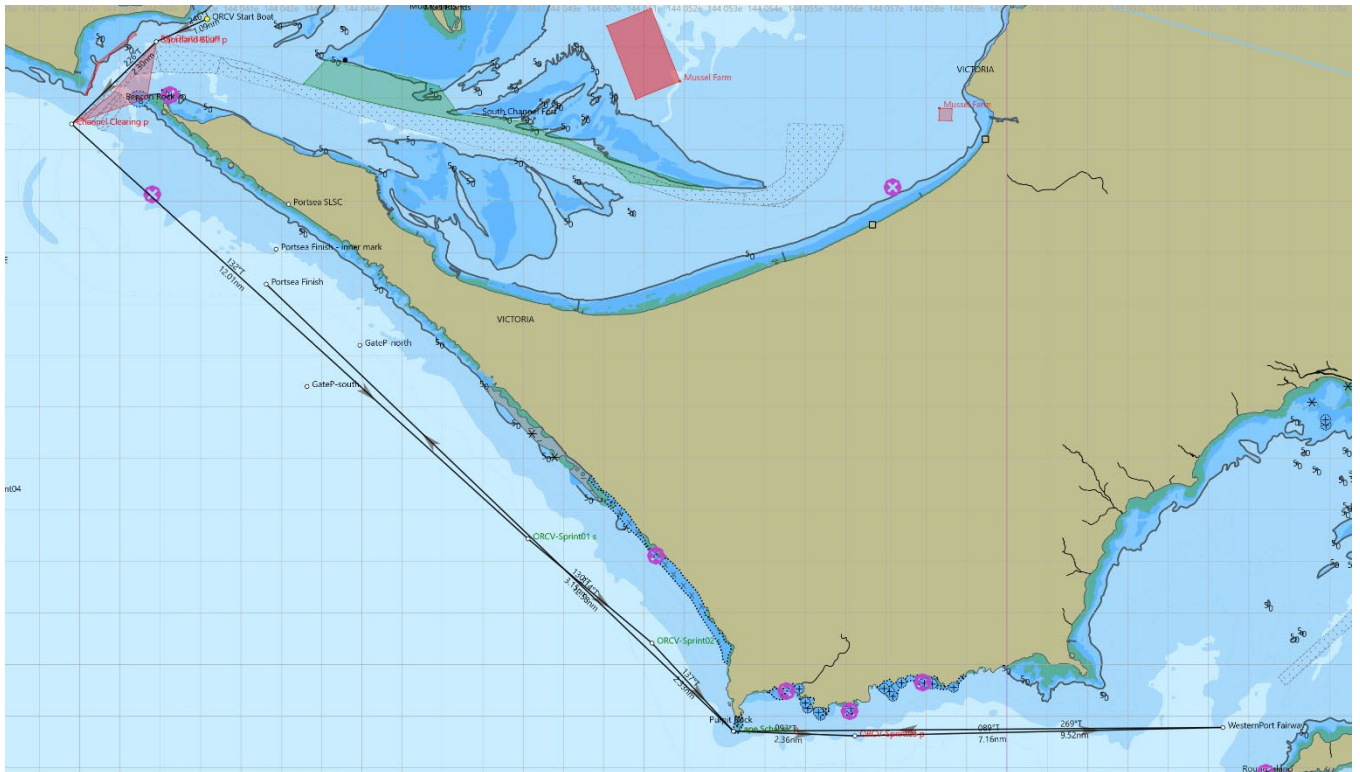
Mark	Position	Description
PBGN	S38° 19.69' E144° 32.60'	Pilot boarding Ground - North
PBGS	S38° 22.69' E144° 32.60'	Pilot boarding Ground - South
PBGE	S38° 21.19' E144° 34.51'	Pilot boarding Ground - East
PBGW	S38° 21.19' E144° 30.69'	Pilot boarding Ground - West

- C6.4. Yachts shown to have sailed within the bounds of this obstruction may be protested and may be penalised as described in SI 7.3.
- C6.5. Yachts are required to record their track through the Pilot Boarding Ground Exclusion Zone using their chart plotter or similar device, and to take a photograph of this track to demonstrate compliance with the Pilot Boarding Ground Exclusion Zone. This photograph shall be submitted to the Race Director if requested in accordance with D5.3.

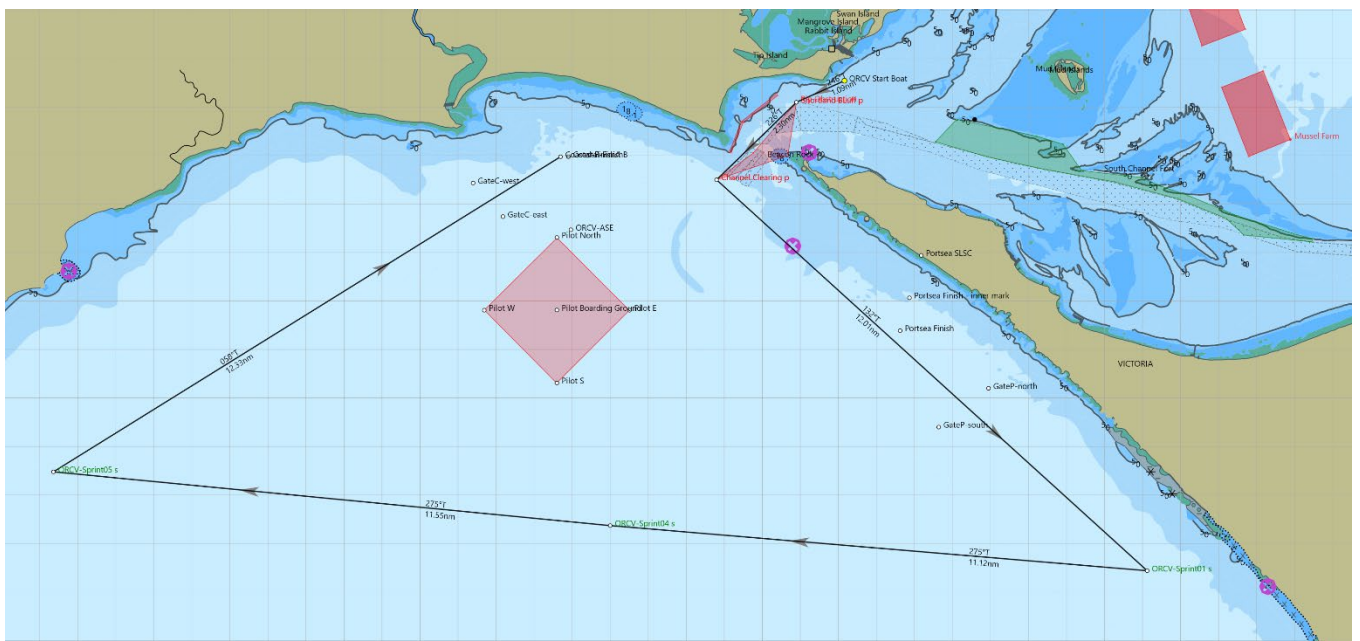
Heads Exclusion Zone



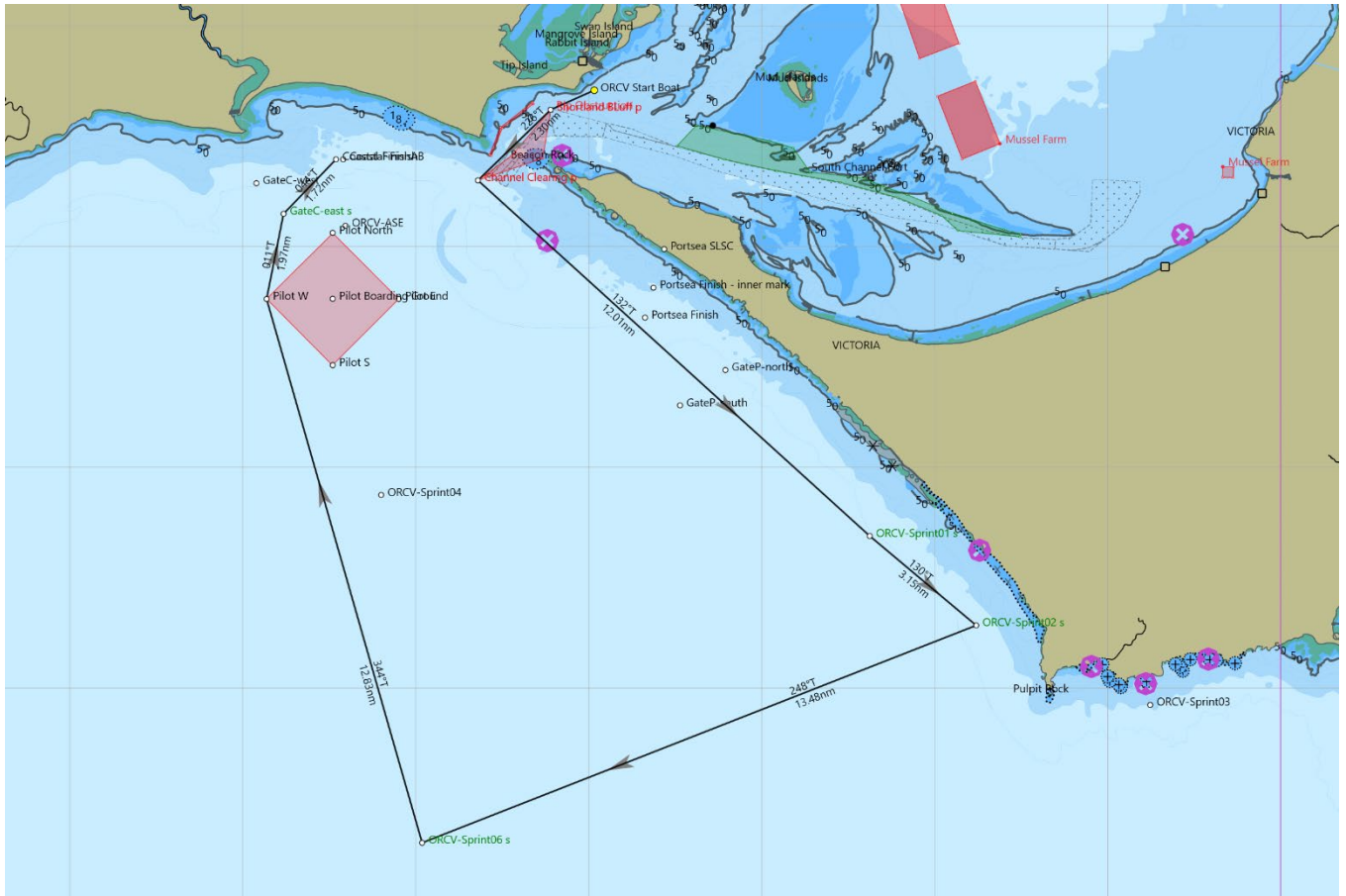
Course 1 - Westernport Course

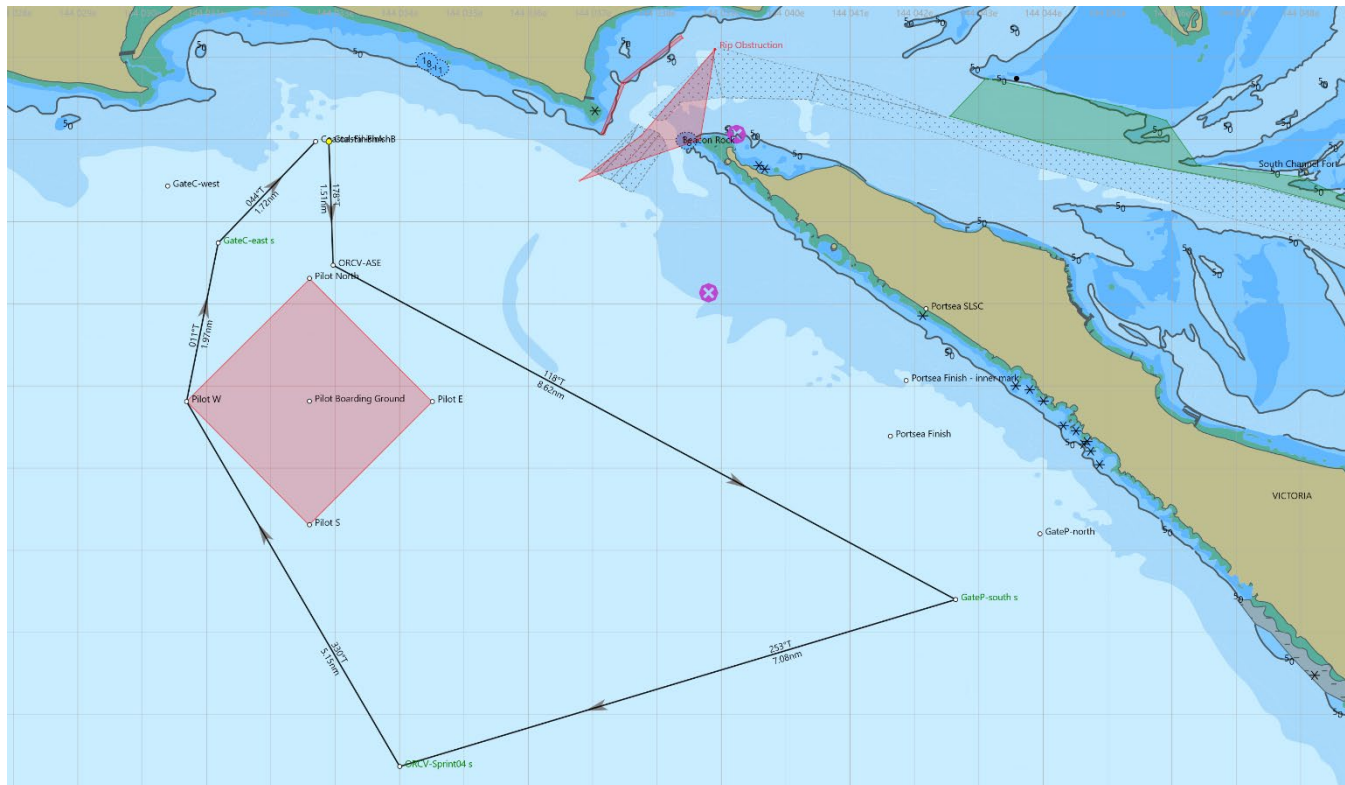


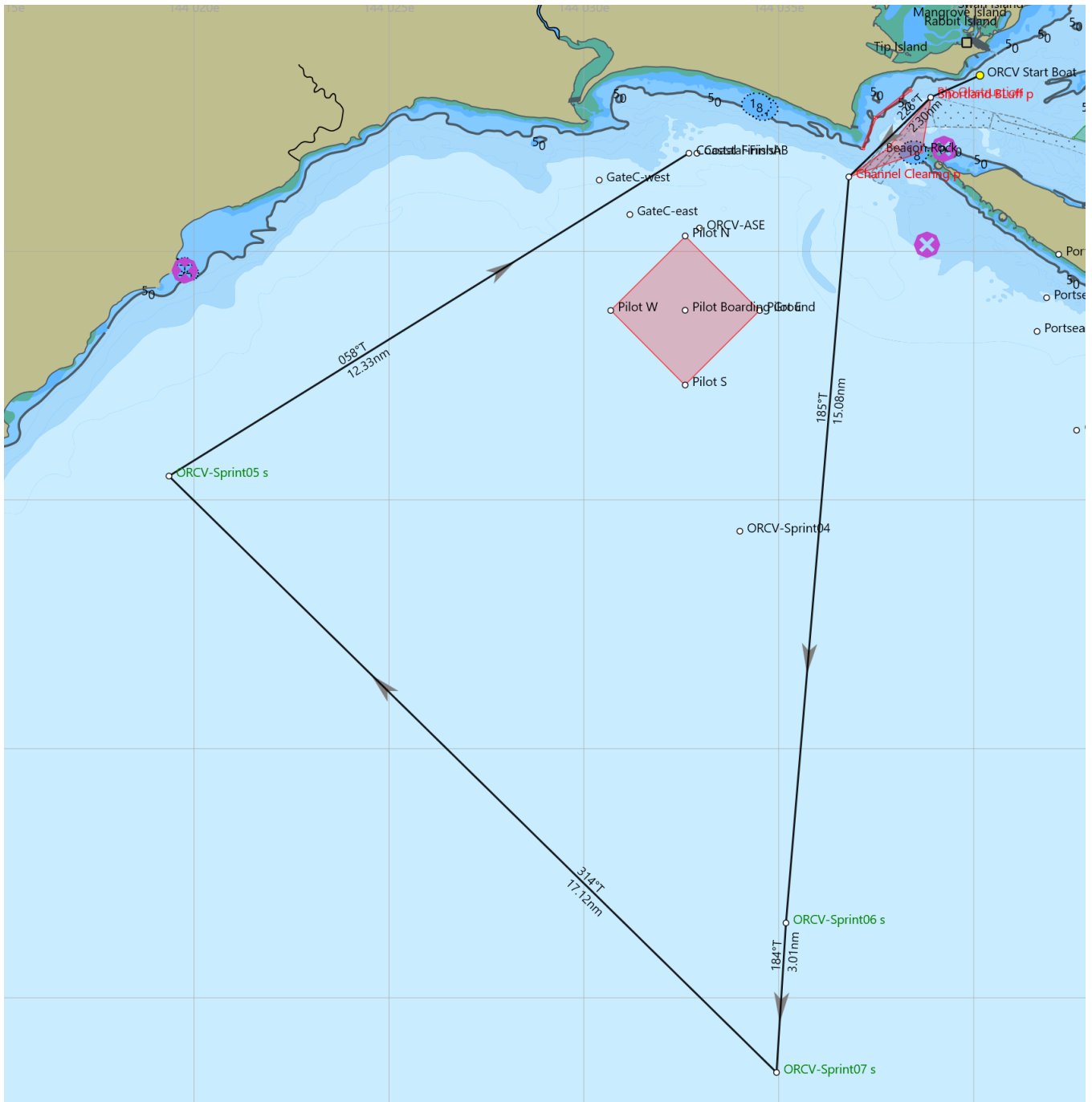
Course 2 - Centre Course

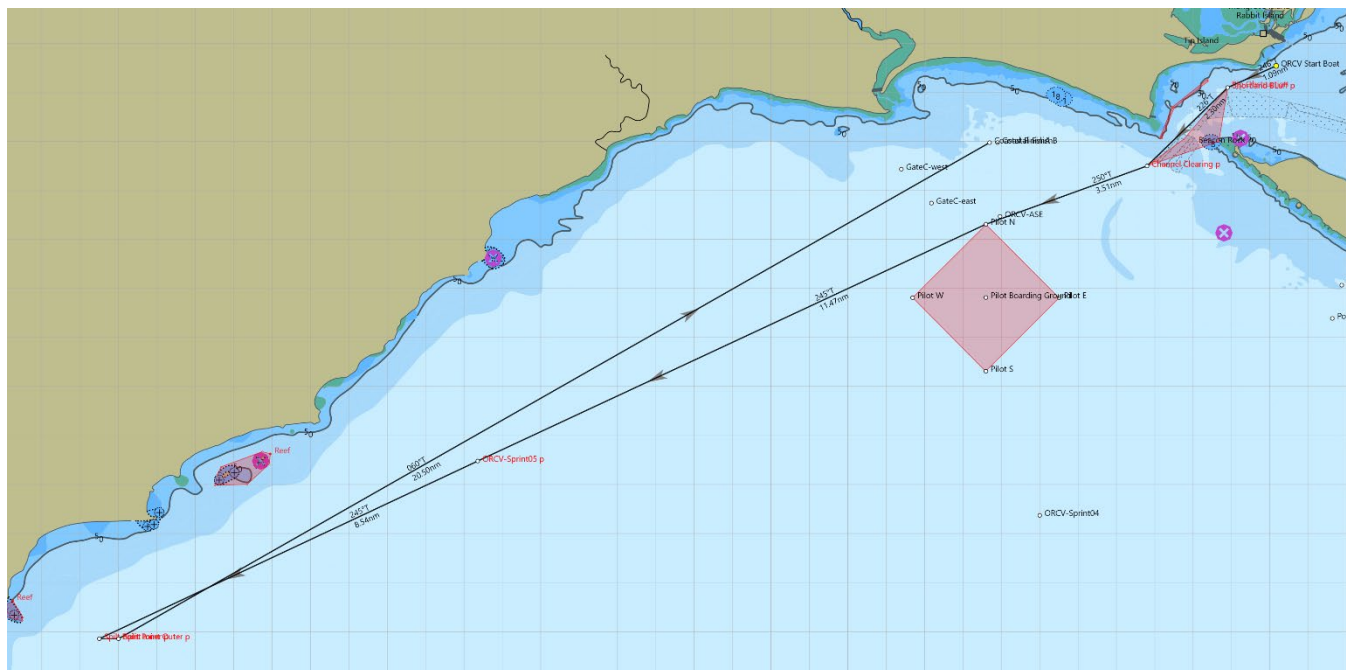


Course 3 - Eastern Course



Course 4 - Short Eastern Course

Course 5 - Western Course

Course 6 - Split Point Course

Appendix D: Finish

This appendix describes the Finishing Line and the post-finishing procedures.

Note: the positions given are approximate.

D1 Reporting

- D1.1. Each yacht is required to notify Ocean Racing on VHF Channel 82 when they cross the finish line
- D1.2. After finishing radios shall be left on VHF Channel 82 for the purpose of receiving information which may be provided by ORCV regarding conditions at the entrance to Port Phillip.

D2 Finishing Line – “Western Port”

- D2.1. The finishing line for the Westernport Course lies on the transit bearing approximately 16 degrees True between the most eastern of the wave buoys located off Portsea Back Beach at S38° 21.612' E144° 41.626' and the observation room at the Portsea Surf Live Saving Club at S38° 20.060' E144° 42.180'.
- D2.2. Yachts must finish in a westerly direction leaving all of the buoys to port at a distance of not more than 0.7NM.

D3 Finishing Line all other Courses

- D3.1. The finish line for all other courses is an imaginary line extending approximately 300m between S38° 18.024' E144° 32.695' and S38° 18.024' E144° 32.901'.
- D3.2. Please note that the Finish Line is approximately 300m east of the Southern marker for the Ex HMAS Canberra dive site.
- D3.3. Yachts shall finish in a northerly direction and the committee boat will not be on station but in other respects the finish line is the same as the alternative start line shown in SI B3.3
- D3.4. If conditions warrant the Race Director may also shorten course by nominating a new finish line located between Mark 5 and the Ex HMAS Canberra Dive Site. The line shall be:
 - approximately 1.5nm in length
 - be set at an angle of approximately 90° to the rhumb line between Virtual Mark SPO off Split Point and the southern marker of the Ex HMAS Canberra Dive Site; and
 - located between two new virtual marks at positions announced by the Race Director on VHF Channel 82.

D4 Finishing Procedure

- D4.1. Skippers are required to record and report their own finishing times, accurate to 1 second based on GPS time. They should also record details of any boats which may be finishing in close proximity.

D5 Declarations

- D5.1. Each yacht is required to lodge a declaration on the form provided in **Appendix E: Race Declaration** with the ORCV as soon as practical, within 12 hours of finishing the race.
- D5.2. Note that the Declaration Form includes details of the rounding/passing times for the last mark before the Finish Gate, the Finish Gate and finishing time.
- D5.3. Declarations may be handed in manually to a Race Director or sent by Email or SMS as a photograph or PDF to the Race Director in accordance with A2.2 and A2.3.
- If a skipper is uncertain as to whether a rule has been breached, they should report the circumstances on the back of this declaration form.

D6 Presentation

- D6.1. Trophies will be presented at the next ORCV presentation ceremony at a place and time to be announced.

D7 Tides

Race 1 – Port Philip Tidal Streams

● FRI 15 SEP			SAT 16 SEP			SUN 17 SEP		
SLACK	MAXIMUM		SLACK	MAXIMUM		SLACK	MAXIMUM	
TIME	TIME	RATE	TIME	TIME	RATE	TIME	TIME	RATE
2:16 am	5:19 am	-3.84		12:37 am	+3.00		1:14 am	+3.49
9:13 am	12:06 pm	+3.47	3:20 am	6:08 am	-4.17	4:10 am	6:52 am	-4.43
3:42 pm	6:13 pm	-3.72	9:59 am	12:48 pm	+3.65	10:39 am	1:24 pm	+3.75
9:54 pm			4:10 pm	6:44 pm	-4.23	4:33 pm	7:13 pm	-4.68
			10:29 pm			11:01 pm		

Race 2 – Port Philip Tidal Streams

FRI 24 NOV			SAT 25 NOV			SUN 26 NOV		
SLACK	MAXIMUM		SLACK	MAXIMUM		SLACK	MAXIMUM	
TIME	TIME	RATE	TIME	TIME	RATE	TIME	TIME	RATE
	1:58 am	-3.80	12:58 am	3:21 am	-3.46	2:26 am	4:45 am	-3.45
5:27 am	8:21 am	+3.10	6:44 am	9:41 am	+2.82	8:12 am	11:01 am	+2.70
11:39 am	2:20 pm	-4.49	12:32 pm	3:21 pm	-4.69	1:27 pm	4:24 pm	-5.00
6:37 pm	9:38 pm	+3.23	7:46 pm	10:43 pm	+3.64	8:48 pm	11:38 pm	+4.06

Race 3 – Port Philip Tidal Streams

PRINT TABLE								
FRI 19 APR			SAT 20 APR			SUN 21 APR		
SLACK	MAXIMUM		SLACK	MAXIMUM		SLACK	MAXIMUM	
TIME	TIME	RATE	TIME	TIME	RATE	TIME	TIME	RATE
	1:01 am	-3.34		1:59 am	-3.04	12:28 am	3:06 am	-3.00
4:26 am	7:07 am	+1.97	5:43 am	8:27 am	+1.72	7:07 am	9:54 am	+2.00
9:43 am	12:51 pm	-3.60	11:01 am	2:04 pm	-2.99	12:41 pm	3:28 pm	-2.65
4:29 pm	7:29 pm	+2.85	5:33 pm	8:59 pm	+2.56	7:00 pm	10:21 pm	+2.54
11:31 pm								

Appendix E: Race Declaration

Declaration

I, [The person in charge], being in charge of the yacht [The yacht name] have adhered to the rules and conditions of the 2023-24 West Offshore Products Coastal Sprint Series Race and confirm [The yacht name] passing/rounding times for designated virtual marks and our Finish time in the table below.

Marks Rounded or passed and Gates	Rounding/Passing/Crossing time	Yachts in Vicinity
Last Mark before Finish Gate		
Finish Gate		
Finish		

- ☐ Please tick if you had a safety related incident or near miss during the race. If so, someone from the Incident Management Team will contact you for details.
- ☐ Please tick and add details if you have any further information required on your Declaration.

Any comments on the race:

--

Signed:	
Date:	