

SAILING INSTRUCTIONS

2023 DOUBLE HANDED RACE AND TEAMS TROPHY



DOUBLE HANDED
ORCV BAY RACE

Version 1.00 Final

Printed at 20:29 on 7-May-23

AMENDMENTS

Number	Instructions Changed	Summary of Amendment

Copyright © Ocean Racing Club of Victoria, Inc 2023

All enquiries to:

Ocean Racing Club of Victoria, Inc
3 Aquatic Drive
ALBERT PARK VIC 3206
Australia

SAILING INSTRUCTIONS

THE 2023 DOUBLE HANDED RACE AND TEAMS TROPHY WILL BE CONDUCTED ON THE WATERS OF PORT PHILLIP. THE RACE IS ORGANISED AND CONDUCTED BY THE OCEAN RACING CLUB OF VICTORIA.

1. RULES

- 1.1. The race shall be governed by the current versions of:
- The 2021-2024 Racing Rules of Sailing (RRS) of World Sailing (WS).
 - The Prescriptions and Special Regulations of Australian Sailing (AS).
 - The Special Regulations of the ORCV.
 - Where a yacht is entered under AMS, the Rules and Regulations of the Australian Measurement System (AMS).
 - Where a yacht is entered under ORC, the Rules and Regulations of the Offshore Rating Congress (ORC).
 - The Notice of Race,
- except as amended by these Sailing Instructions.
- 1.2. All times in these Sailing Instructions are Australian Eastern Standard Time (AEST) unless otherwise stated.

2. NOTICES TO COMPETITORS

- 2.1. Notices to competitors will be posted on the ORCV website www.orcv.org.au.
- 2.2. Any changes to the Sailing Instructions may be posted on the ORCV website (www.orcv.org.au).
- 2.3. Any such alterations will be advised to competitors on VHF Channel **71** at **0905** on **Sunday 21 May 2023**.
- 2.4. Code Flag Lima (L) will be displayed at the RBYC Race Control Tower.

3. CLASS FLAG

- 3.1. The Class Flag for all categories and divisions will be Code Flag Romeo (R).

4. THE START

- 4.1. **Sign on:** a SMS message will be sent to all yachts at **0800** asking them to confirm they are a starter. Yachts shall follow the link in the SMS and indicate if they are a starter.
- 4.2. All yachts shall monitor VHF Channel **71** from **0905**.
- 4.3. Each yacht whose SMS response has not been received will be called in alphabetical order on VHF Channel **71** to confirm if she is a starter.
- 4.4. Start time will be **1000** on **Sunday 21 May 2023** off the RBYC Race Control Tower always allowing the Race Director at their discretion to postpone to another time.
- 4.5. The Starting Line will be between a staff displaying an orange flag on the Committee Vessel at the starboard end and a yellow inflatable mark at the port-end. The Committee Vessel will be located approximately 1 to 1.5 nm off the RBYC breakwater.
- 4.6. The Race will be started in accordance with RRS 26. Times shall be taken from the flag signals. Failure of sound signals shall be disregarded.
- 4.7. Any individual recalls will be signalled as per RRS 29.1.
- 4.8. Any premature starters may be identified by the Race Director on VHF Channel **71**.
- 4.9. Any general recalls will be signalled as per RRS 29.2. A broadcast may be made by the Race Director on VHF Channel **71**.

5. THE COURSES

- 5.1. Courses and marks are as described in Appendix A Courses and Appendix B Marks
- 5.2. The course to be sailed will be indicated by displaying the applicable Numeral Pennant no later than the Warning signal.

6. THE FINISH

- 6.1. The Finish Line will be an imaginary line between the black vertical line on the western side of the RBYC Race Control Tower on the Brighton breakwater and a yellow special mark (RBYC6) approximately 150 metres WNW of the tower.

7. TIME LIMIT & DECLARATIONS

- 7.1. The time Limit for the first yacht to finish shall be **1500**. If the first yacht finishes within the time limit, all other yachts must finish by **1700**. Any yacht finishing after this time shall be scored DNF (amends RRS 35).
- 7.2. Written Declarations are not required. A yacht correctly passing though the Finish Line is deemed to have made a Declaration on the part of her skipper that, to the best of their knowledge, no Rules have been breached during the Race.
- 7.3. If a skipper is uncertain whether any rule has been breached, he/she shall report the circumstances in writing to the Race Director within one hour of finishing.

8. PROTESTS & REQUESTS FOR REDRESS

- 8.1. Any protest or request for redress shall be lodged with the Race Director or the ORCV office no later than 1200 on Monday 22 May 2023.
- 8.2. Any protests or requests for redress will be heard at a time and place to be advised.
- 8.3. Any request for redress involving the official time sheet shall be submitted as soon as possible after the posting of the results but no later than 1200 on Monday 22 May 2023.
- 8.4. The Protest Committee shall not be entitled to abandon the Race as a consideration for redress (amends RRS 64.2).
- 8.5. All protests will be heard and penalties (if any) applied before the determination of trophy / memento recipients.

9. YACHTS RETIRING

- 9.1. Any yacht retiring shall inform the Race Director on VHF Channel **71** or, if this is not possible, via SMS to the Race Director's phone **0418 396 605**.
- 9.2. In addition, the yacht shall inform the Race Director by SMS within one hour of reaching her home club.

10. SAFETY REGULATIONS

- 10.1. The Safety Category and Regulations are as set out in the Notice of Race.
- 10.2. The crew of yachts sailed Double Handed shall wear lifejackets at all times when on deck.
- 10.3. A yacht or her equipment may be inspected at any time, before the Race warning signal or after her finish, for compliance with the Australian Sailing and ORCV Special Regulations, the Notice of Race and these Sailing Instructions.
- 10.4. The Race Director may, at his/her absolute discretion, disqualify a yacht from participating or continuing to participate in the Race if the Race Director believes that it is unsafe for that yacht to commence or continue to race.

11. UNSUITABLE CONDITIONS

- 11.1. After commencement of the Race, the Race can be terminated at the Race Director's discretion.
- 11.2. The Race Committee may deem the Race to be abandoned, rescheduled to another time or shortened.
- 11.3. Prorated positions may be used to determine a result for the Race and/or for any series.

- 11.4. Any termination of the Race will be advised by radio on VHF Channel **71**.

12. RACE COMMUNICATIONS

- 12.1. A yacht shall neither make radio transmissions while racing nor receive radio communications not available to all yachts. This restriction also applies to mobile phones.
- 12.2. Yachts shall monitor VHF Channel **71** as well as VHF Channel **16** while racing. **If standing by on another VHF channel, yachts shall still maintain a continuous listening watch on VHF Channel 16 by a suitable method such as dual watch or scanning or multiple radios.**

13. DISCLAIMER OF LIABILITY

- 13.1. All those taking part in this race do so at their own risk and responsibility.
- 13.2. Acceptance of a yacht as an entrant in the race is not to be taken as express or implied acceptance on the part of the ORCV and/or any of its Flag Officers, Committee Members, Equipment Auditors, Employees, Volunteers or any other members, of the fitness of any yacht or any equipment on such yacht to safely compete in the race, and/or deal with any and all eventualities of the contemplated passage. It is the responsibility of each skipper of each competing yacht to decide whether his/her yacht is fit and suitably crewed for the intended purpose, and neither the ORCV nor any club, person or company connected with the organisation of the race is responsible for the seaworthiness of any yacht whose entry is accepted.
- 13.3. Attention is drawn to Fundamental Rule 3 "Decision to Race" of the RRS which states:

The responsibility for a boat's decision to participate in a race or to continue racing is hers alone.

14. APPENDICES

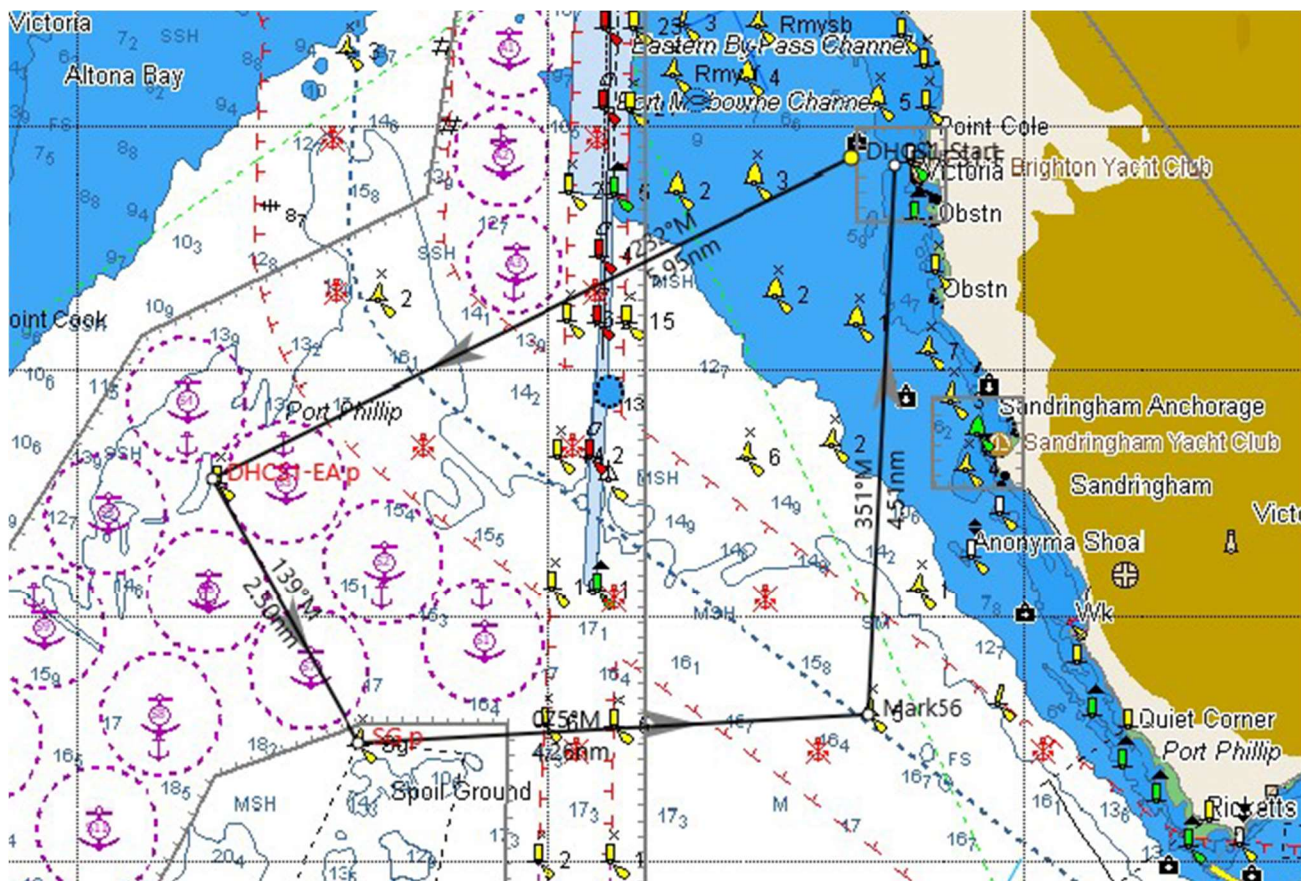
- 14.1. The attached Appendices A and B form part of these Sailing Instructions.

Appendix A COURSES

THIS APPENDIX DESCRIBES THE COURSES FROM WHICH THE RACE COURSE WILL BE CHOSEN.

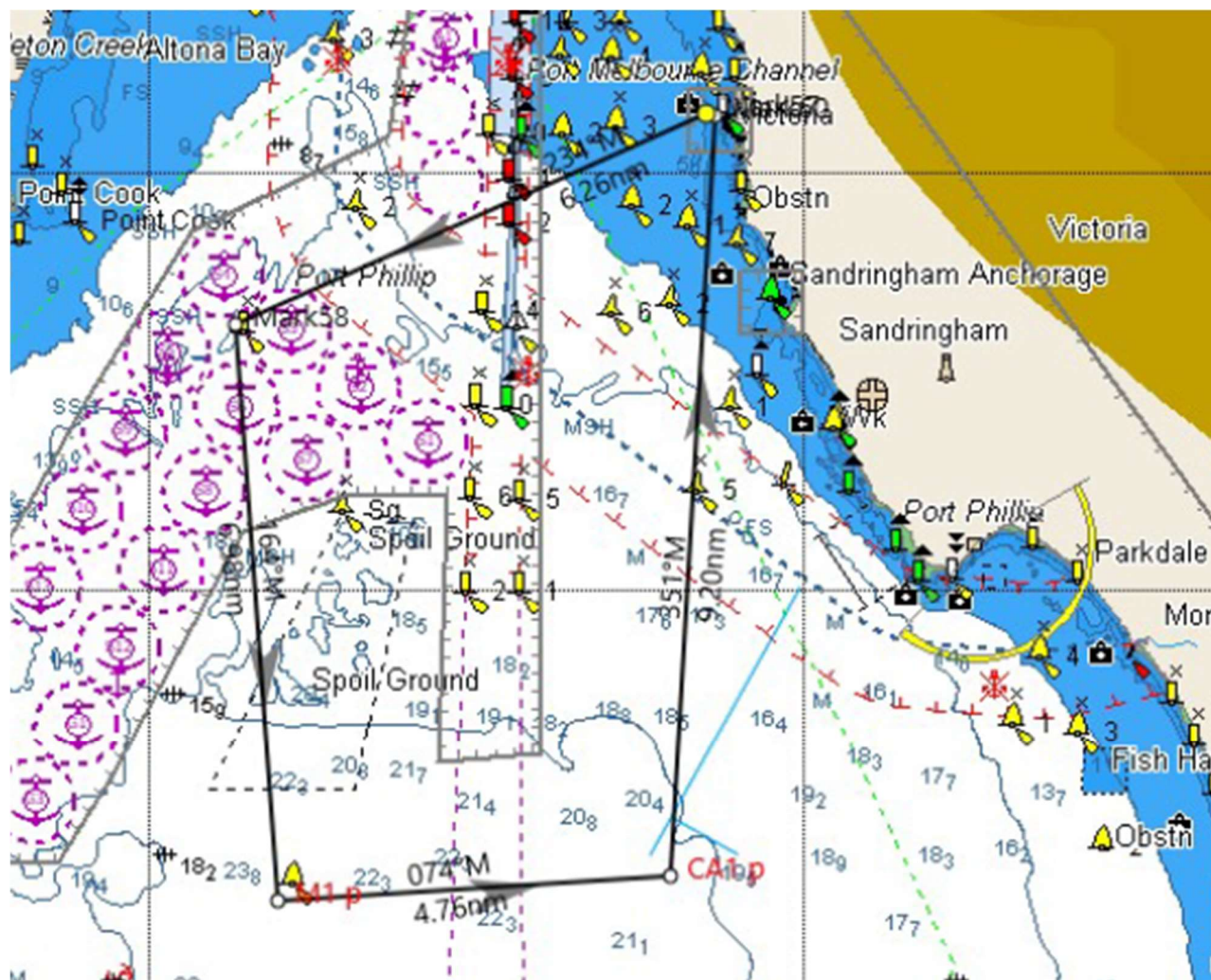
Course 1 (~18 nm) Short Northerly Northerly Start and Finish

Mark	Pass Mark to:
Start	
Gate	
EA	Port
SG	Port
SYC5	Port
Finish	



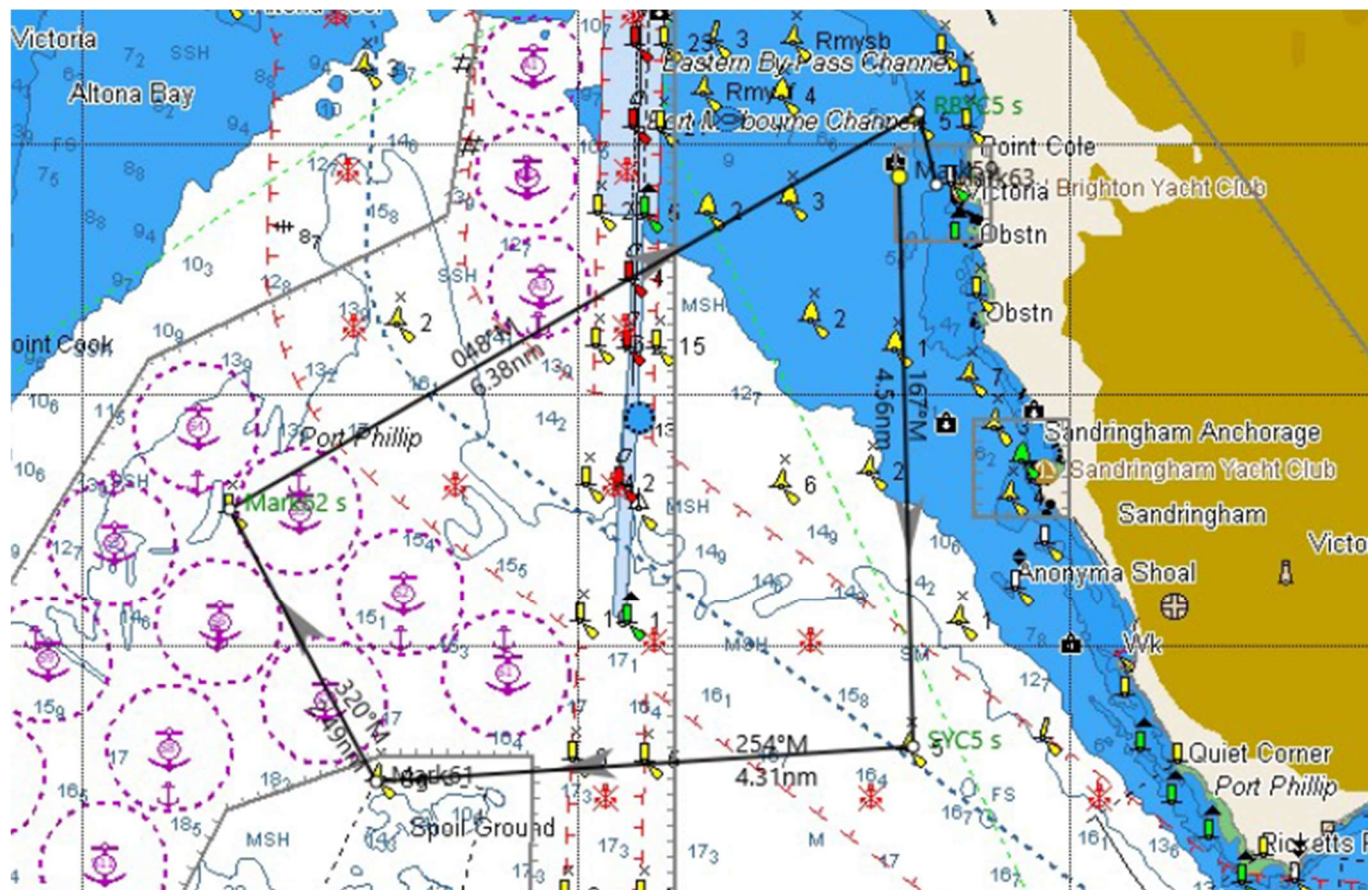
Course 2 (~28 nm) Long Northerly Northerly Start and Finish

Mark	Pass Mark to:
Start	
Gate	
EA	Port
M1	Port
Carrum 1	Port
Finish	



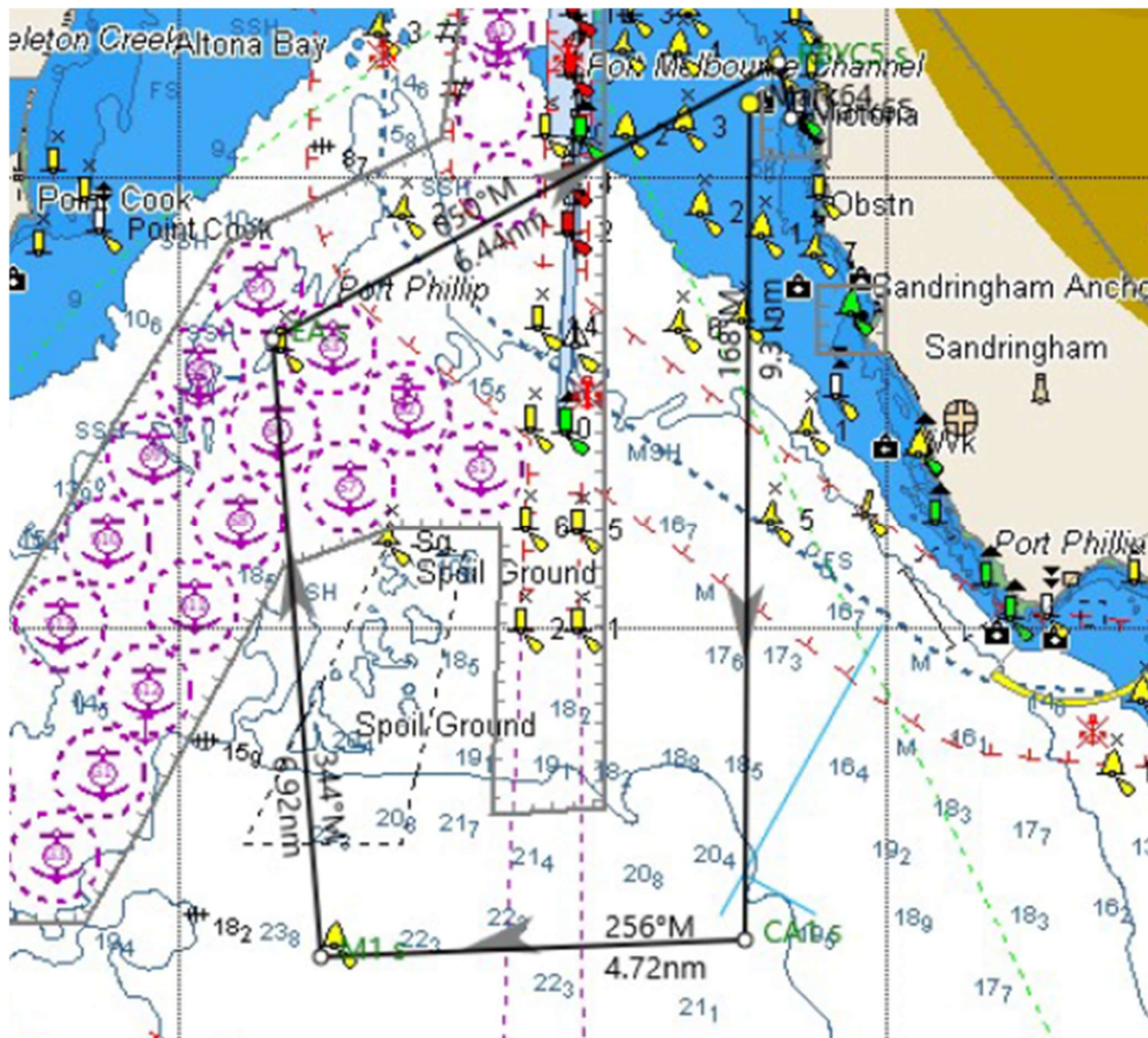
Course 3 (~18 nm) Short Southerly Southerly Start and Finish

Mark	Pass Mark to:
Start	
Gate	
SYC5	Starboard
SG	Starboard
EA	Starboard
RBYC5	Starboard
Finish	



Course 4 (~29 nm) **Long Southerly** **Southerly Start and Finish**

Mark	Pass Mark to:
Start	
Gate	
Carrum 1	Port
M1	
EA	Port
RBYC5	Starboard
Finish	



Appendix B MARKS

THESE MARK DESCRIPTIONS AND POSITIONS SHOULD NOT BE USED UNCRITICALLY. THEY HAVE BEEN ASSEMBLED FROM THE BEST INFORMATION AVAILABLE BUT MAY ONLY BE APPROXIMATE AND MAY CONTAIN ERRORS. SKIPPERS AND NAVIGATORS SHOULD VERIFY MARK INFORMATION USING THEIR OWN RESOURCES.

Mark	Name	Location
Gate		2 Orange inflatable marks laid approximately 1 to 1.5 nm to windward of the Start Line.
CA1	Carrum 1	38° 03.45'S 144° 58.00'E
EA	Explosives Anchorage	37° 56.91'S 144° 51.50'E
M1	Centre of Bay	38° 03.80'S 144° 52.01'E
RBYC5	RBYC Club Mark 5	37° 53.81'S 144° 58.46'E
RBYC6	RBYC Club Mark 6	37° 54.32'S 144° 58.53'E
SG	Spoil Ground	37° 59.06'S 144° 52.99'E
SYC5	SYC Club Mark 5	37° 58.81'S 144° 58.38'E