

SAILING INSTRUCTIONS

2022 ORCV OVERNIGHT BAY RACE

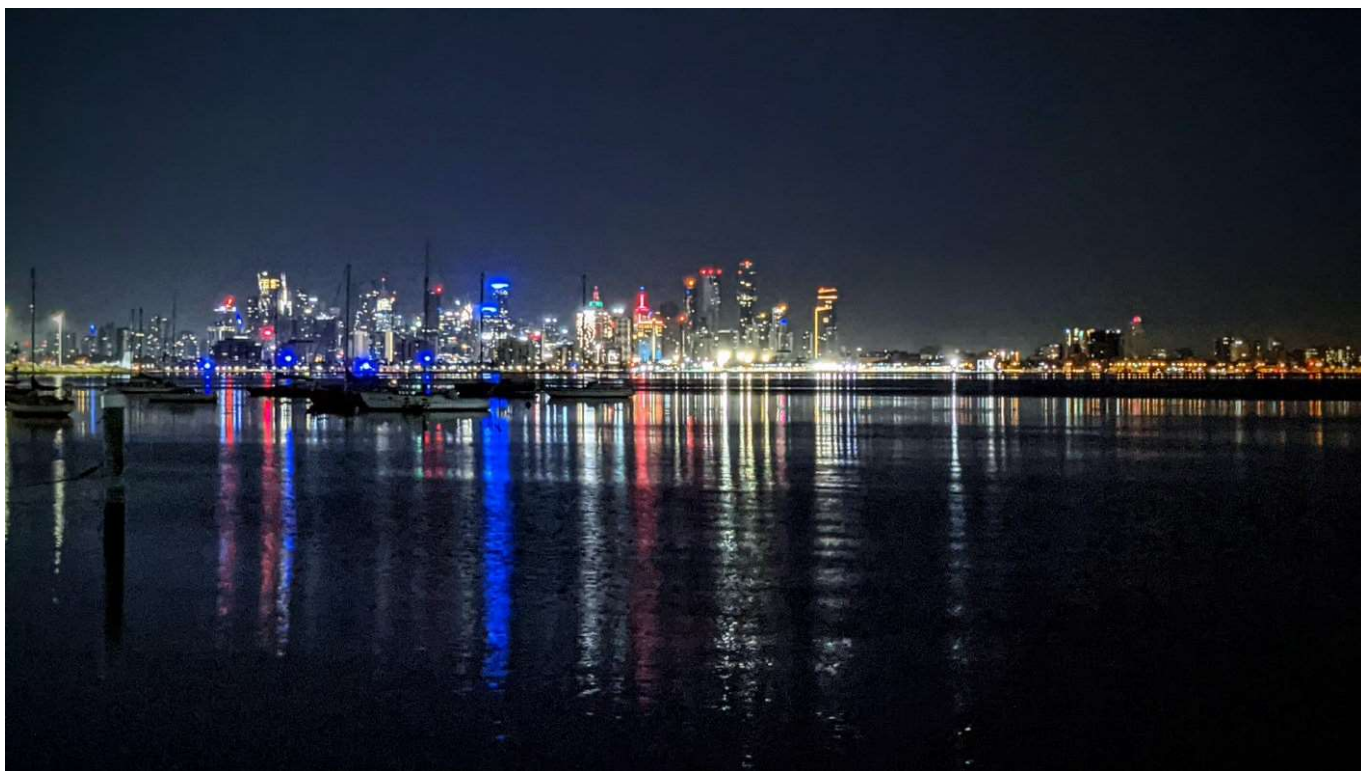


Photo by Paulina Hryniewiecka

ORCV Training

Version 1.01

AMENDMENTS

Number	Instructions Changed	Summary of Amendment
1.01	Various	1: New Williamstown start line 2: All starts now done via VHF. 3: Common course shortened due to light wind forecast.

Copyright © Ocean Racing Club of Victoria, Inc 2022

All enquiries to:

Ocean Racing Club of Victoria, Inc
3 Aquatic Drive
ALBERT PARK VIC 3206
Australia

SAILING INSTRUCTIONS

THE 2022 ORCV OVERNIGHT BAY RACE WILL BE CONDUCTED ON THE WATERS OF PORT PHILLIP. THE RACE IS ORGANISED AND CONDUCTED BY THE OCEAN RACING CLUB OF VICTORIA WITH THE CO-OPERATION OF HOBSONS BAY YACHT CLUB, ROYAL BRIGHTON YACHT CLUB, SAFETY BEACH SAILING CLUB AND THE ROYAL GEELONG YACHT CLUB

1. RULES

- 1.1. The race shall be governed by the current versions of:
 - the 2021-2024 Racing Rules of Sailing (RRS) of World Sailing (WS),
 - the Prescriptions and Special Regulations of Australian Sailing (AS),
 - the Special Regulations of the Ocean Racing Club of Victoria (ORCV),
 - where applicable, the rules and regulations of the Australian Measurement System (AMS) and the ORC
 - the Notice of Race,except as amended by these Sailing Instructions.
- 1.2. Times in these Sailing Instructions are Australian Eastern Standard Times (AEST) unless otherwise stated. Clocks in Melbourne are moved forward 1 hour on Sunday 2 October 2022 at 0200 when Australian Eastern Daylight time (AEDT) begins.

2. NOTICES TO COMPETITORS

- 2.1. Notices to competitors will be posted on the ORCV website www.orcv.org.au.
- 2.2. Any changes to the Sailing Instructions may be posted on the ORCV website (www.orcv.org.au). Any such alterations shall be advised to competitors on VHF Channel 8271 at the beginning of the Sign-On period 1330 on Saturday, 1 October 2022.

3. CLASS FLAG

Class flags will not be used at the start locations. This varies RRS 26. See Appendix A for details

4. SIGN ON

- 4.1. All yachts are required to sign by VHF Radio on Channel 82 to indicate their intention to race and to confirm the number of persons on board. Yachts which fail to complete their sign on shall be scored DNC.
- 4.2. Commencing at 1330 on Saturday, 1 October 2022 *Ocean Racing* will commence the Sign-On schedule on VHF Channel 82 calling each yacht in alphabetical order to confirm that they are starters in the race. Yachts should respond: *{Yacht Name} is a starter, {xx} persons on board, I am starting the race from {Brighton/Safety Beach/Geelong/Williamstown} and comply with the Notice of Race Over.*
- 4.3. Yachts that do not respond on the first call must wait until they are called again at the end of the schedule.
- 4.4. *In the event of late crew changes, crew names and phone numbers must be added to, or removed from, the boat's crew list as applicable using the Top Yacht entry page.*

5. THE START

- 5.1. Start time will be 1500 on Saturday, 1 October 2022 always allowing the Race Director discretion to postpone to another time.
- 5.2. Yachts may elect to start from Starting Lines located in the vicinity of Royal Brighton Yacht Club or Safety Beach Sailing Club or the Royal Geelong Yacht Club or Royal Yacht Club of Victoria.
- 5.3. Details of the alternative Start Lines and signals given during the Starting Sequence are given in Appendix A

- 5.4. The starting procedure set out in RRS 26 shall not apply.
- 5.5. At all locations premature starters may not be identified but may be subject to protest by other competitors.
- 5.6. General recalls shall be signalled as per RRS 29.2. A broadcast may be made by radio on VHF Channel 82.

6. THE COURSES

Course and marks are as described in *Appendix A Courses* and *Appendix B Marks*. In the event that any physical mark is missing, yachts shall round virtual marks at the locations specified in Appendix B.

7. RACE LOGS

- 7.1. Each yacht shall maintain a Race Log using the template provided by ORCV recording:-
- marks rounded or passed in sequence
 - the time when each mark is rounded or passed.
 - The cumulative distance made good at each mark
 - the yachts position at each position reporting schedule
 - the yachts position at Finishing Time
- 7.2. The Race Log shall be given to the Race Director at Hobsons Bay Yacht Club at the earliest opportunity after completion of the race and not later than 1015 AEDT on Sunday 2 October.
- 7.3. The Race Log template will be available for downloading from <https://www.orcv.org.au/sailing/races/overnight-race> by 1700 on Friday 30 September 2022

8. REPORTING SCHEDULES

- 8.1. Position Schedules will be conducted on VHF Channel 82 at the following times:-
- 1805
 - 2105
 - 0005
 - 0305 AEDT
 - 0605 AEDT
 - 0910 AEDT (Finishing Schedule)
- 8.2. Yachts will be called in alphabetical order and shall respond with their position (as at the time of the schedule commencement) in degrees and whole minutes only, and the marks rounded since the previous Position Schedule.
- 8.3. Yachts not responding to the first call shall wait until the end of the schedule when they will be called again.

9. THE FINISH

- 9.1. The race shall finish at 0900 AEDT on Sunday 2 October 2022. There is no finish line.
- 9.2. At 0900 AEDT on Sunday 2 October 2022 each yacht shall record its position in its Race Log and proceed to HBYC.
- 9.3. At the Finishing Schedule conducted at 0910 AEDT each yacht shall report its finishing position and declare the distance made good during the race. ie the course distances completed from the yacht's starting line to the last mark rounded plus the distance from that mark to the yacht's finishing position. .

10. RESULTS AND PRESENTATION

- 10.1. Results will be determined for each Handicap Category based on corrected distance made good calculated by dividing actual distance made good by the yacht's Handicap .
- 10.2. There will be a presentation at the HBYC commencing, as near as practical, at 10.30 AEDT.

11. BERTHING AT HBYC

Berthing will be available at HBYC after the race. Yachts should call ORCV 5 minutes before arrival on VHF 73 for directions.

12. DECLARATIONS

- 12.1. Written declarations are not required. In the absence of advice to the contrary, yachts completing the race will be deemed to have made a declaration on the part of her skipper that to the best of their knowledge no rules have been breached during the race.
- 12.2. If a skipper is uncertain whether any rule has been breached, they should report the circumstances in writing to the race officials within one hour of finishing.

13. PROTESTS & REQUESTS FOR REDRESS

- 13.1. Any protests or requests for redress are to be lodged with an official of the ORCV at HBYC no later than 1200 AEDT on Sunday 2 October 2022.
- 13.2. Competitors intending to lodge a protest or request for redress shall inform ORCV by VHF radio on Channel 82 during the 0910 AEDT Finishing Schedule.
- 13.3. Protests or requests for redress will be heard at a time and place to be advised.
- 13.4. The protest committee shall not be entitled to abandon the race as a consideration for redress (amends RRS 64.3).

14. CORRECTION OF RESULTS

There shall be no time limit for correction of any error in published results. This amends Rule 90.3

15. YACHTS RETIRING

Yachts retiring shall inform the Race Committee on VHF Channel 82 and by SMS to the Race Director on 0418 396 605

16. SAFETY REGULATIONS

- 16.1. The Safety Category and regulations are as set out in the Notice of Race.
- 16.2. The crew of yachts sailed Double Handed must wear lifejackets at all times when on deck.
- 16.3. A yacht or its equipment may be inspected at any time for compliance with the ORCV safety rules, the Notice of Race and these Sailing Instructions.
- 16.4. The Race Committee may, at their absolute discretion, disqualify a yacht from participating or continuing to participate in the race if they believe that it is unsafe for that yacht to commence or continue to race.

17. UNSUITABLE CONDITIONS

- 17.1. After commencement of the race, the race can be terminated at the Race Committee's discretion.
- 17.2. The Race Committee may deem the race to be abandoned, rescheduled to another time or shortened.
- 17.3. Prorated positions may be used to determine a result for the race and/or for any series.
- 17.4. Termination of the race will be advised by radio on VHF Channel 82.

18. RACE COMMUNICATIONS

- 18.1. A yacht shall neither make radio transmissions while racing nor receive radio communications not available to all yachts. This restriction also applies to mobile telephones.
- 18.2. Yachts shall monitor VHF Channel 82 as well as VHF Channel 16 while racing.

19. DISCLAIMER OF LIABILITY

- 19.1. All those taking part in this race do so at their own risk and responsibility.

- 19.2. Acceptance of a yacht as an entrant in the race is not to be taken as express or implied acceptance on the part of the ORCV and/or any of its Flag Officers, Committee Members, Equipment Auditors, Employees, Volunteers or any other members, of the fitness of any yacht or any equipment on such yacht to safely compete in the race, and/or deal with any and all eventualities of the contemplated passage. It is the responsibility of each skipper of each competing yacht to decide whether his/her yacht is fit and suitably crewed for the intended purpose, and neither the ORCV nor any club, person or company connected with the organisation of the race is responsible for the seaworthiness of any yacht whose entry is accepted.
- 19.3. Attention is drawn to Fundamental Rule 3 “Decision to Race” of the RRS which states:
- The responsibility for a boat’s decision to participate in a race or to continue racing is hers alone.*

20. APPENDICES

The attached Appendices A (Courses), B (Marks) and C (Communications Summary) form part of these Sailing Instructions.

Appendix A COURSES

THIS APPENDIX DESCRIBES THE ALTERNATIVE START LOCATIONS, STARTING PROCEDURES AND COURSES TO BE SAILED.

A1 COMMON START PROCEDURE

- A1.1 A 5 minute countdown will be given using VHF Channel 82.
- A1.2 Competitors shall manage their own start and shall not start before 1500. Any competitor crossing the line before 1500 shall return to the start line and start correctly.

A2 STARTING IN THE VICINITY OF RBYC

- A2.1 The Start Line shall be between the black vertical line displayed on the western side of the Race Control Tower and the starting mark (RBYC 6) as illustrated below.

ORCV OVERNIGHT BAY RACE - BRIGHTON START

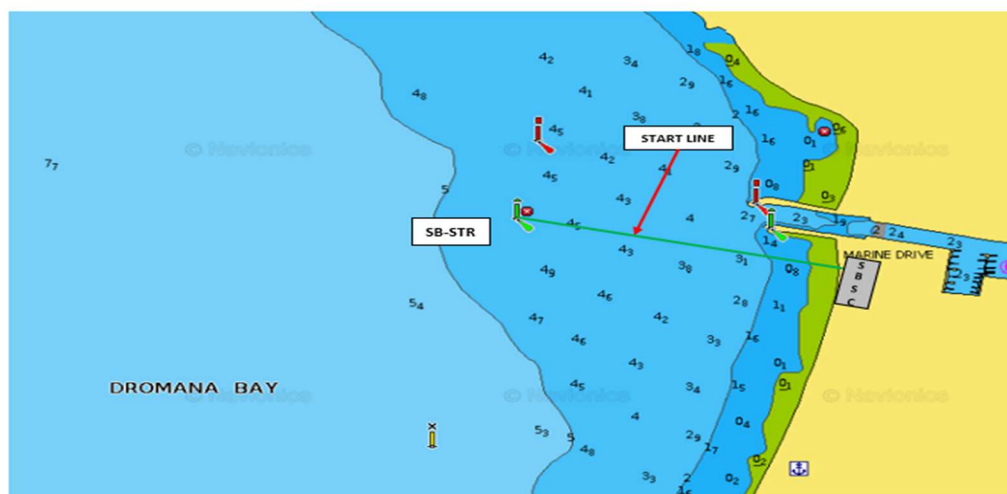


- A2.2 Yachts shall start in a northerly direction.

A3 STARTING IN THE VICINITY OF SAFETY BEACH

- A3.1 The Start Line shall be between the Centre Line of the SBSC Start Box and the Green Navigation Pile West of the Club House as illustrated below.

ORCV OVERNIGHT BAY RACE - SAFETY BEACH START



- A3.2 Yachts shall start in a south westerly direction.

A4 STARTING IN THE VICINITY OF RGYC

- A4.1 The Start Line shall be between mark G-STR and the North East corner of Cunningham Pier as illustrated below.

ORCV OVERNIGHT BAY RACE - GEELONG START LINE

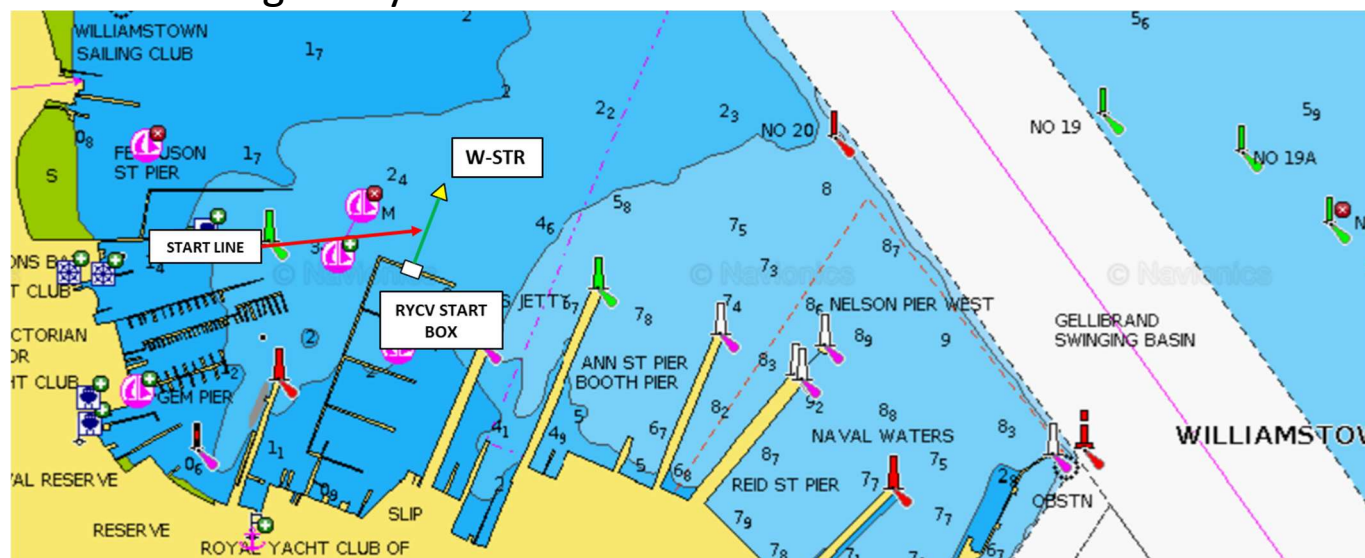


- A4.2 Yachts shall start in a north easterly direction

A5 STARTING IN THE VICINITY OF RYCV

A5.1 The Start Line shall be between the Flag Mast on the northern end of the RYCV Marina and a Yellow Special Purpose Mark approximately 200m north of the Flag Mast.

ORCV Overnight Bay Race – Williamstown Start Line



A5.2 Yachts shall start in an easterly direction.

A6 COURSES

A6.1 The courses are in two parts comprising:-

- One of four fixed marked courses from the skippers chosen start line to Mark Centre M1
- A common fixed mark course from Mark Centre M1 to the Finish.

A6.2 The course to Centre M1 from the start line at **RBYC** is:

Leg No.	Mark	Position	Distance	Bearing (T)	Rounding	Notes
	Start	NW Direction				Tower Start between Flag on Tower and Mark RBYC6
A1	R3	37°53.172 S 144°56.379 E	2.2nm	303°	Port	
A2	P3	37°53.393 S 144°52.852 E	2.8nm	266°	Port	
A3	SYC1	37°57.802 S 144°58.892E	6.7nm	132°	Stb	
A4	SG	37° 59.067 S 144°53.000 E	5.0nm	255°	Stb	
A5	OA	37°57 010 S 144°51.431 E	2.5nm	330°	Port	
A6	Centre M1	38°03.516 S 144°52.224 E	6.6nm	176°	Port	Beware of Vessels approaching from other directions and rounding to Stb

A6.3 The course to Centre M1 from the start line at **Safety Beach** is:

Leg No.	Mark	Position	Distance	Bearing (T)	Rounding	Notes
	Start	SW Direction				Tower Start between Start Line on Club and Mark SB-STR
B1	SC21	38°19.478 S 144°55.467 E	3.3nm	250°	stb	
B2	SYM	38°13.910 S 144°50.615 E	6.8nm	325°	stb	
B3	PGB	38°06.400 S 144°44.201 E	9.1nm	326°	stb	
B4	Centre M1	38°03.516 S 144°52.224 E	6.7nm	066°	Stb	Beware of Vessels approaching from other directions and rounding to STB

A6.4 The course to Centre M1 from the start line at **Geelong** is:

Leg No.	Mark	Position	Distance	Bearing (T)	Rounding	Notes
	Start	NE Direction				Competitor Self-Start between Mark G-STR and NE corner of Cunningham Pier
C1	HC10	38°07.401 S 144°24.125 E	2.0nm	056°	Stb	
C2	HC01	38°07.054 S 144°26.761 E	2.2nm	081°	stb	
C3	PR18	38°07.915 S 144°32.083 E	4.3nm	102°	port	
C4	PRE	38°04.954 S 144°39.945 E	6.9nm	064°	Stb	
C5	PGB	38°06.400 S 144°44.201 E	3.7nm	114°	Port	
C6	Centre M1	38°03.516 S 144°52.224 E	6.7nm	066°	Stb	Beware of Vessels approaching from other directions and rounding to Stb

A6.5 The course to Centre M1 from the start line at **Williamstown** is:

Leg No.	Mark	Position	Distance	Bearing (T)	Rounding	Notes
	Start	Easterly Direction				An imaginary line between the Flag Mast on the northern end of the RYCV Marina and a Yellow Special Purpose Mark approximately 200m north of the Flag Mast
D1	WC19A	37°51.499 S 144°55.110 E	0.5nm	084°	Stb	
D2	RMYSC	37°52.200 S 144°56.400 E	1.2nm	124°	Stb	
D3	P3	37°53.393 S 144°52.852 E	3.1nm	247°	Port	
D4	SYC1	37°57.802 S 144°58.892 E	6.7nm	132°	Stb	
D5	SG	37°59.067 S 144°53.000 E	5.0nm	255°	Stb	
D6	OA	37°57.010 S 144°51.431 E	2.5nm	127°	Port	
D7	Centre M1	38°03.516 S 144°52.224 E	6.6nm	188°	Port	Beware of Vessels approaching from other directions and rounding to Stb

A6.6 Following rounding of Centre M1 all yachts shall proceed along the fixed mark course given below until the finish at 0900 AEDT on Sunday 2 October 2022 **noting that if yachts complete leg 15 before the finish time** they shall return to RMYS G as leg 9, round that mark to Stb, and then repeat legs 10 – 15. This cycle shall be continued as required until finishing time. Each completed leg shall be recorded on the Race Log. –

Leg No.	Mark	Position	Distance	Bearing (T)	Rounding	Notes
1	R2	37°54.536 S 144°56.338 E	9.6nm	020°	port	
2	R4	37°50.689 S 144°55.360 E	4.0nm	349°	port	
3	WC19A	37°51.499 S 144°55.110 E	0.9nm	193°	port	
4	RMYS G	37°50.964 S 144°56.137 E	1.0nm	056°	Stb	
5	RBYC 6	37°54.320 S 144°58.530 E	3.8nm	150°	Stb	
6	P3	37° 53.393 S 144° 52.852 E	4.8nm	280°	Stb	
7	GELL	37°52.608 S 144°54.902 E	2.8nm	061°	port	
8	R4	37°50.689 S 144°55.360 E	1.6nm	015°	port	
9	WC19A	37°51.499 S 144°55.110 E	0.9nm	193°	port	
10	RMYS G	37°50.964 S 144°56.137 E	1.0nm	056°	Stb	
11	RBYC 6	37°54.320 S 144°58.530 E	3.8nm	150°	Stb	
12	P3	37° 53.393 S 144° 52.852 E	4.8nm	280°	Stb	
13	GELL	37°52.608 S 144°54.902 E	2.8nm	061°	port	
14	R4	37°50.689 S 144°55.360 E	1.6nm	015°	port	
15	WC19A	37°51.499 S 144°55.110 E	0.9nm	193°	port	
ALL BOATS TO REPEAT LEGS 10 TO 15 UNTIL FINISH TIME OF 0900 AEDT RECORDING EACH LEG CONSECUTIVELY ON THE OFFICIAL RACE LOG						

Appendix B MARKS

THIS APPENDIX DESCRIBES THE MARKS USED IN THE COURSES DESCRIBED IN APPENDIX A

ORCV OVERNIGHT BAY RACE – COURSE MARKS

Mark	Name	Location	Character	Description
CA2	Carrum #2	S38° 03.071' E145° 04.526'	Unlit	Can, Yellow
GELL	Gellibrand Shoal	S37° 52.608' E144° 54.902'	BYB Q(3) 10S 5M F BU	East Cardinal
G-STR	Geelong Start	S38° 08.461' E144° 21.883'	BN FL Y 5S	Spar, Special
HC01	Hopetoun Channel #1	S38° 07.054' E144° 26.761'	F G + Iso G 4s 5M	Pile, Starboard Lateral
HC10	Hopetoun Channel #10	S38° 07.401' E144° 24.125'	Iso R 4s 5M	Pile, Port Lateral
M1	Centre Buoy	S38° 03.516' E144° 52.224'	Fl(2) Y 10s	Yellow Can
OA	Outer Anchorage	S37° 57.010' E144° 51.431'	Fl(4) Y 12s 3M	Pile, Special
P3	Pipeline 3	S37° 53.393' E144° 52.852'	Fl Y 4s	Pile, Special
PGB	Prince George Beacon	S38° 06.400' E144° 44.201'	Fl R 4s 8M	Pile, Port Lateral
PR18	Pt Richards Channel #18	S38° 07.915' E144° 32.083'	Q W	Pile, N Cardinal (BY)
PRE	Pt Richards Channel Entry	S38° 04.954' E144° 39.945'	Q W 9M	Pile, N Cardinal (BY)
R1	Recreational Mark 1	S38° 16.473' E144° 58.361'	Fl(3) Y 10s	Conical, Special
R2	Recreational Mark 2	S37° 54.536' E144° 56.338'	Fl(3) Y 10s	Conical, Special
R3	Recreational Mark 3	S37° 53.172' E144° 56.379'	Fl Y 4s	Spar, Special
R4	Recreational Mark 4	S37° 50.689' E144° 55.360'		Spar, Special
RBYC6	RBYC Club Mark 6	S37° 54.320' E144° 58.530'	Fl(4) Y 12s	Conical, Yachting

RMYS C	RMYS Club Mark C	S37°52.200' E144°56.400'		Pillar, yachting
--------	------------------	--------------------------	--	------------------

RMYS G	RMYS Club Mark G	S37° 50.964' E144° 56.137'	Fl(4) Y 10s	Pillar, Yachting
SC21	South Channel #21	S38° 19.478' E144° 55.467'	Fl(2) G 5s 8M	Pile, Starboard Lateral
SG	Spoil Ground	S37° 59.067' E144° 53.000'	Fl Y 5s	Pillar, Special
SB-STR	Safety Beach Start Mark	S38° 18.374' E144° 59.306'		Pile, Starboard Lateral
SYC1	SYC Club Mark 1	S37° 57.802' E144° 58.892'	Fl(4) Y 10s	Pillar, Yachting
SYM	Symonds Channel Entrance	S38° 13.910' E144° 50.615'	Q(3) 10s	Pillar, E Cardinal (BYB)
WC19A	Williamstown Channel #19A	S37° 51.499' E144° 55.110'	Fl G 5s 2M	Pile, Starboard Lateral

Appendix C COMMUNICATIONS SUMMARY

Date	Time	Action	Communications	Station	Ref
	1330	Race Announcements & Radio Sign-On	VHF Channel 82	Ocean Racing	
	1400	Radio Sign-On End	VHF Channel 82	Ocean Racing	
	1455	Warning Signal	VHF Channel 82	Ocean Racing	
	1500	Race Start	VHF Channel 82	Ocean Racing	
	1805	Position Schedule	VHF Channel 82	Ocean Racing	
	2105	Position Schedule	VHF Channel 82	Ocean Racing	
	0005	Position Schedule	VHF Channel 82	Ocean Racing	
	0305 AEDT	Position Schedule	VHF Channel 82	Ocean Racing	
	0605 AEDT	Position Schedule	VHF Channel 82	Ocean Racing	
	0900 AEDT	Race Finish	VHF Channel 82	Ocean Racing	
	0910 AEDT	Race Finish Schedule	VHF Channel 82	Ocean Racing	
	Monitor	Unscheduled Announcements Retirements	VHF Channel 82	Ocean Racing	
	Monitor	Emergencies, Warnings	VHF Channel 16	Variable	
	Berthing	Destination Berthing Assistance	VHF Channel 73	Variable	