

SAILING INSTRUCTIONS

2019 ORCV WINTER SERIES



WINTER SERIES
ORCV BAY RACE

Version 1.03 Final

AMENDMENTS

Number	Instructions Changed	Summary of Amendment
1	Appendix B	Location of Race 1 – Now start and finish from RBYC tower with consequential change in applicable courses.
2	Appendix C	C2.1 – Start Line
3	Appendix E	Typographical errors (M2 should be M1), Table covers fixed marks only
4	Appendix H	Courses 21 – 24 inclusive amended due to possibility of Mark SYC 1 not being on station. In courses 21 & 23 SYC 5 substituted for SYC 1, For courses 23 & 24 SYC 1 omitted with no other change. Column heading amended to read rounding/passing Four supplementary short courses added.
5	Flare shoot Instructions	No Change to this document
6	Appendix C and Appendix H	Clause 2.3 added to Appendix C to provide for a Committee Boat start if desired by the Race Director. Course 25 added to Appendix H
7	Appendices B, C, E and I	Changes start location and start description (Appendices B & C), adds Gate RBYC3 to Appendix E Marks and replaces existing courses in Appendix I. These changes introduce and facilitate a Committee Boat start for the Geelong Passage Race

Copyright © Ocean Racing Club of Victoria, Inc 2019

All enquiries to:

Ocean Racing Club of Victoria, Inc
3 Aquatic Drive
ALBERT PARK VIC 3206
Australia

SAILING INSTRUCTIONS

THE 2019 ORCV WINTER SERIES WILL BE CONDUCTED ON THE WATERS OF PORT PHILLIP. THE SERIES IS ORGANISED AND CONDUCTED BY THE OCEAN RACING CLUB OF VICTORIA.

1. RULES

- 1.1. The rules for the race shall be:
- the 2017-2020 Racing Rules of Sailing (RRS) of World Sailing (WS),
 - the Prescriptions and Special Regulations of Australian Sailing (AS),
 - the Special Regulations of the Ocean Racing Club of Victoria (ORCV),
 - where applicable, the rules and regulations of the Australian Measurement System (AMS) and the IRC Rule Parts A, B and C;
 - the Notice of Race,
- except as amended by these Sailing Instructions.
- 1.2. All times in these Sailing Instructions are Australian Eastern Standard Time (AEST) unless otherwise stated.
- 1.3. For the Overnight Navigator's Challenge event, between the hours of Sunset and Sunrise, RRS 10 to 22 inclusive shall cease to be applicable and shall be replaced by the International Regulations for the Prevention of Collision at Sea.
- 1.4. For the purpose of that event, the times of Sunrise and Sunset shall be as follows:
- Sunset: 1809
 - Sunrise: 0623

2. CHANGES TO SAILING INSTRUCTIONS

- 2.1. Notices to competitors will be posted on the ORCV website (www.orcv.org.au).
- 2.2. Any change to these Sailing Instructions may be posted on the ORCV website (www.orcv.org.au) before 0800 on the day of the race.
- 2.3. Any such alterations will also be announced to competitors on the designated race radio

channel (see SI A2) after the Sign-On Schedule on the day of the race.

3. SCHEDULE OF RACES

Races are scheduled as shown in *Appendix B Schedule of Races*.

4. CLASS FLAGS

The class flags will be:

Division/Class	Class Flag
Unrestricted Monohull	Victor (V)
Female -based Crew	Foxtrot (F)
Double Handed	Delta (D)
Multihull Racing	Tango (T)
Cruisers Non-Spinnaker	Echo (E)

5. COURSES

- 5.1. A selection of courses has been prepared to provide for a range of weather conditions.
- 5.2. The description of the courses is given in the following appendices:
- *Appendix F RMYS Fixed Mark Courses*
 - *Appendix G Blairgowrie Passage Courses*
 - *Appendix H RBYC Fixed Mark Courses*
 - *Appendix I Geelong Passage Courses*
 - *Appendix J Navigators' Challenge Courses*
- 5.3. The description of the course marks is given in *Appendix E Marks*.
- 5.4. The course numbers for each day's races will be announced on VHF Channel 82 at the end of the radio Sign-On Schedule on the day of the race. In addition, every effort will be made to advise skippers by SMS on the prior Friday.

6. THE STARTS

- 6.1. The starting lines will be as described in *Appendix C Starting Lines*.
- 6.2. The first start time will be five (5) minutes after the first warning time listed in the

schedule of races in *Appendix B Schedule of Races* unless otherwise altered by the Race Committee.

- 6.3. The order of starting will be:

Group One

- Unrestricted Monohull
- Female-based Crew
- Double Handed
- Multihull Racing

Group Two

- Cruising Non-Spinnaker

- 6.4. Classes may be delayed with the class flags ultimately determining the order of starts.

- 6.5. For the Overnight Navigator's Challenge, all yachts will start together on their chosen starting line at the designated start time.

7. THE FINISHES

- 7.1. The finishing lines will be as described in *Appendix D Finishing Lines*.

- 7.2. Care should be taken to clear the finish area as soon as practical after finishing.

- 7.3. Unless circumstances prevent it, the finishing times of all boats will be taken by the race committee at the finish but as a back-up, skippers are requested to record their own finishing times, accurate to 1 second and to inform the race committee of this time if requested.

8. TIME LIMITS

- 8.1. Except for the Overnight Navigator's Challenge, the Time Limit for all yachts shall be Sunset. Any yacht finishing after this time shall be scored DNF (amends RRS 35).

- 8.2. For the purpose of this series, the times of sunset are given in *Appendix B Schedule of Races*.

9. DECLARATIONS

- 9.1. Written declarations are not required except as described in SI 12.7. A yacht correctly passing though the finish line is deemed to have made a declaration on the part of her skipper that to the best of his or her knowledge no rules have been breached during the race.

- 9.2. If a skipper is uncertain as to whether any rule has been breached, he or she should report the circumstances in writing to ORCV by 1200 on the first business day following the race.

10. RETIREMENTS

Yachts retiring from a race should inform the race committee on VHF Channel 82 within 10 minutes of their retirement.

11. PROTESTS & REQUESTS FOR REDRESS

- 11.1. Protests or requests for redress shall be lodged with the ORCV at:

Ocean Racing Club of Victoria
3 Aquatic Drive
ALBERT PARK VIC 3206
Australia

Email: orcv@orcv.org.au

in accordance with the requirements of RRS Part 5 Section A, not later than 1200 on the first business day following the race.

- 11.2. Protests or requests for redress will be heard at a time and place to be advised.

- 11.3. When the Protest Committee decides that a yacht that is a party to a protest hearing has broken a rule, it may disqualify or otherwise penalise the yacht by a percentage time penalty in accordance with the provisions of RRS 64.

- 11.4. The Protest Committee shall not be entitled to abandon the race as a consideration for redress (amends RRS 64.2).

12. SAFETY REGULATIONS

- 12.1. The Safety Category and regulations are as set out in the Notice of Race.

- 12.2. The ORCV strongly recommends that safety harnesses and suitable lifejackets be worn whenever conditions warrant, particularly in rough weather, at night or when sailing short-handed.

- 12.3. The crew of yachts sailed Double Handed must wear lifejackets at all times when on deck.

- 12.4. In particular, attention is drawn to Victorian regulations which stipulate the mandatory

wearing of lifejackets when on deck during times of heightened risk. This includes crossing a bar, transiting the Heads (classified as a bar), sailing at night and when the weather or weather forecast indicates risk. For full details, consult the Transport Safety Victoria website (www.transportsafety.vic.gov.au).

- 12.5. Yachts shall keep clear of all commercial shipping (vessels more than 35 metres in length) while within Port Phillip and particularly while transiting Port Phillip Heads, as required by Port of Melbourne Corporation Harbour Master's Directions. Ships are restricted in their ability to manoeuvre while entering and within Port Phillip and yachts should take any necessary avoiding action early.
- 12.6. In the event of avoiding action becoming necessary, a yacht may start its engine and motor to avoid a shipping hazard, on a course perpendicular to the ship's track for as long as necessary.
- 12.7. A yacht that takes such action shall return to the location they started motoring, cease motoring and resume racing as soon as possible. The details of any such action must be reported to the Race Director on the Declaration after finishing.
- 12.8. Yachts found to have impeded the progress of a commercial vessel may be disqualified after protest.
- 12.9. A yacht or its equipment may be inspected at any time for compliance with the ORCV safety rules and sailing instructions.
- 12.10. The Race Director may, at their absolute discretion, disqualify a yacht from participating or continuing to participate in the race if they believe that it is unsafe for that yacht to commence or continue to race.
- 12.11. Yachts should keep well clear of Mussel Spat Culture zones and use extreme caution to avoid the sand bar outside the line of the Hopetoun Channel between piles 3 and 9.

13. EXCLUSION ZONE

The Point Wilson Explosives Pier is surrounded by a total exclusion zone of 300 metres. A fine of up to A\$10,000 may be

imposed for entry to this area, accidental or not. The area is under constant video surveillance and competitors must make themselves aware of the exact zone limits.

14. UNSUITABLE CONDITIONS

- 14.1. After commencement of the race, any race can be terminated at the Race Director's discretion.
- 14.2. The Race Director may deem the race to be abandoned, rescheduled to another time or shortened.
- 14.3. Prorated positions may be used to determine a result for the race and/or for any series.
- 14.4. Termination of the race will be advised by radio communications or satellite phone as available.

15. RACE COMMUNICATIONS

Race communications procedures, including VHF radio and phone, are detailed in *Appendix A Race Communications*.

16. DISCLAIMER OF LIABILITY

- 16.1. All those taking part in these races do so at their own risk and responsibility.
- 16.2. Acceptance of a yacht as an entrant in each race is not to be taken as express or implied acceptance on the part of the ORCV and/or any of its Flag Officers, committee members, Equipment Auditors or any other members, of the fitness of any yacht or any equipment on such yacht to safely compete in that race, and/or deal with any and all eventualities of the contemplated passage. It is the responsibility of each skipper of each competing yacht to decide whether his/her yacht is fit and suitably crewed for the intended purpose, and neither the ORCV nor any club, person or company connected with the organisation of these races is responsible for the seaworthiness of any yacht whose entry is accepted.
- 16.3. Attention is drawn to Fundamental Rule 4 "Decision to Race" of the RRS which states:

The responsibility for a boat's decision to participate in a race or to continue racing is hers alone.

17. APPENDICES

All the attached Appendices to this document form part of these Sailing Instructions.

Appendix A RACE COMMUNICATIONS

THIS APPENDIX DESCRIBES THE RADIO AND OTHER COMMUNICATIONS PROCEDURES TO BE FOLLOWED DURING THESE RACES.

A1 GENERAL

- A1.1 While racing, a yacht shall neither make nor receive radio communications not available to all yachts. This restriction also applies to mobile telephones and satellite phones except when being used for formal race communications or contacting the race director.
- A1.2 Yachts with AIS transponders must have them switched on at all times.
- A1.3 It is compulsory for yachts to respond to all scheduled radio and SMS communications, including the Sign-On Schedule and any Position Schedules.
- A1.4 Yachts must not give false or misleading position reports.
- A1.5 Yachts must not interfere with operation of any tracking units.

A2 RACE COMMUNICATIONS

- A2.1 Race Communications will use a combination of VHF radios and SMS from mobile or satellite phones.
- A2.2 Radio communications for the races in this series will be on VHF Channel 82 (the designated Race Frequency) unless boats are directed to alternative channels.
- A2.3 Yachts shall maintain a listening watch on VHF Channel 82 and be prepared to respond to Race Committee calls at any time.
- A2.4 As well as VHF Channel 82, yachts must also monitor VHF Channel 16 (using the radio's scan or similar capability) for emergency and other calling traffic.
- A2.5 The Race Director can be contacted on the Race Director's phone 0418 396 605.
- A2.6 Emails to be sent to the Race Director should be sent to race.director@orcv.org.au.

A3 RACE RADIO STATIONS

- A3.1 All race communications, including the Sign On Schedule and any Position and Finishing Schedules, will be conducted by the ORCV using the call sign *Ocean Racing*.
- A3.2 Any other yacht or station nominated by the ORCV will provide assistance where necessary.

A4 SIGN ON SCHEDULE

- A4.1 For each race, all yachts are required to sign on to indicate their intention to race, their compliance with the Notice of Race and the number of persons on board.
- A4.2 Around 90 minutes prior to the first Start, an SMS message will be sent to the mobile number registered for each yacht asking if they intend to race. Skippers must follow the link in the message to indicate their intentions:
- **Yachts intending to race should indicate they are a starter, they comply with the Notice of Race and the number of persons on board.**
 - **Yachts not intending to race should indicate they will not be racing.**
- All responses should be completed by 60 minutes before the first Start.**
- A4.3 Commencing 45 minutes before the first Start, a radio sign on schedule will be conducted by *Ocean Racing* on the designated Race Channel for all yachts that have not signed on using the SMS facility. This schedule will conclude no later than 10 minutes before the first Start. All yachts must monitor this schedule in case their SMS sign on response has not been received.
- **Yachts will be called in alphabetical order to confirm that they are starters in the race, they comply with the Notice of Race and how many persons they have on board.**

- Yachts that do not respond on the first call must wait until they are called again at the end of the schedule.
- Any boat failing to respond during this schedule shall not be considered a starter in the event and shall be scored DNS.

A4.4 Any alterations to these Sailing Instructions or to handicaps applicable for the race and the selected course numbers will be broadcast following completion of the Sign-On Schedule. All yachts are required to monitor this broadcast.

A5 PREMATURE STARTERS

Premature starters may be identified on the Race Channel.

A6 POSITION SCHEDULES

A6.1 Position schedules are only required for the Overnight Navigator's Challenge.

A6.2 During the Overnight Navigator's Challenge, there will be Position Schedules on the Race Channel every three hours starting from 1505:

1505	1805	2105	0005
0305	0605		

A6.3 Yachts will be called in alphabetical order and shall respond with their position in degrees and whole minutes (only) and the marks rounded since their last Position Schedule.

A6.4 Yachts not responding to the first call must wait until the end of the schedule when they will be called again.

A7 FINISHING REPORTS

Some courses and destinations may require yachts to call Ocean Racing on the designated Race Channel when various marks have been reached or passed when nearing the finishing line. Details of these Finishing Report requirements are found in the finishing line descriptions in *Appendix D Finishing Lines*.

A8 YACHTS RETIRING

A8.1 Should a yacht retire from the race, every effort must be made to advise the Race Director by radio, phone call or SMS as soon as possible and to give the following information:

- Time & position at the time of retirement
- Reason for retirement
- The state of the crew
- The port to which the yacht is retiring.

A8.2 Boats that retire shall maintain a listening watch on the Race Channel until such time as they reach a safe harbour.

A8.3 Within one hour of arrival at a safe harbour, contact must be made with ORCV (*Ocean Racing*) on the Race Channel or the Race Director's telephone (0418 396 605) to confirm safe arrival.

A8.4 Failure to comply with these requirements may prejudice acceptance of an entry in future races.

A9 BERTHING AT DESTINATIONS

Volunteers at the various destinations may use VHF Channel 73 for berthing assistance.

A10 SUMMARY

Date	Time	Action	Communications	Station	Ref
Each Race Date	-90 mins	SMS Sign-On Start	SMS Link	Race Director	SI A4.2
	-60 mins	SMS Sign-On End		Race Director	SI A4.2
	-45 mins	Radio Sign-On Start	VHF Channel 82	Ocean Racing	SI A4.3
	-10 mins	Radio Sign-On End		Ocean Racing	SI A4.3
	-5 mins	First Warning	Flags/Sounds	Race Tower	SI 6 Appendix B
	Start	First Start	Flags/Sounds	Race Tower	SI 6 Appendix B
	Start+	Premature Starters	Flags/Sounds	Race Tower	SI 6 Appendix B
	Every 3 hours	Position Schedule Overnight Navigators' Challenge only	VHF Channel 82	Ocean Racing	SI A6
	Finishing	Finishing Reports Passage Races only	VHF Channel 82	Ocean Racing	SI A7 Appendix D
	Monitor	Unscheduled Announcements Retirements	VHF Channel 82	Ocean Racing	A2.3
	Monitor	Emergencies, Warnings	VHF Channel 16	Variable	A2.4
	Berthing	Destination Berthing Assistance	VHF Channel 73	Variable	A9

Appendix B SCHEDULE OF RACES

THIS APPENDIX LISTS THE RACES TO BE RUN AS PART OF THE WINTER SERIES, WITH STARTING LOCATIONS, WARNING TIMES AND THE TYPE OF EACH RACE.

Race	Date	Warn	Start	Finish	Courses	Type of Race	Sunset
1	22 JUN	1025	RBYC Tower	RMYS Tower	Appendix FH	Fixed Marks (~25nm)	1708
2	06 JUL	0925	RBYC Tower	Blairgowrie	Appendix G	Blairgowrie Passage	1714
3	03 AUG	1025	RBYC Tower	RBYC Tower	Appendix H	Fixed Marks (~25nm)	1734
4	31 AUG	0925	RBYC Boat	Geelong	Appendix I	Geelong Passage	1757
5	14 SEP	1155	Various	HBYC	Appendix J	Overnight Navigators' Challenge	1809

Appendix C STARTING LINES

THIS APPENDIX DESCRIBES THE STARTING LINES AT ALL LOCATIONS FROM WHERE RACES ARE STARTED.

C1 RMYS TOWER

- C1.1 The Starting Line shall be an imaginary line between the line on the face of the RMYS Breakwater Tower and RMYS Mark A (RMYSA).
- C1.2 RMYS Mark H (RMYSH) is a crowding buoy laid a short distance off the breakwater. This will be treated as an extension of the breakwater tower. Yachts must not pass between the tower and RMYSH.

C2 RBYC TOWER

- C2.1 The Starting Line shall be an imaginary line between the line on the face of the breakwater tower and a pink inflatable mark located to the west of breakwater tower.
- C2.2 A crowding buoy may be laid a short distance off the breakwater. This will be treated as an extension of the breakwater tower. Yachts must not pass between the tower and the crowding buoy.
- C2.3 If announced by the Race Director at the end of the Sign On Schedule, the Start shall be an imaginary line between the flagstaff of the RBYC Start Boat on station in the vicinity of the RBYC Breakwater and an orange buoy. A crowding mark may also be laid.

C3 GEELONG PASSAGE RACE

- C3.1 The Start shall be an imaginary line between the flagstaff of the RBYC Start Boat on station not more than 2nm to leeward of RBYC3 and an orange laid buoy. A crowding mark may also be laid.

C4 NAVIGATORS' CHALLENGE

- C4.1 There are five starting locations for the Overnight Navigator's Challenge Race:
- RBYC: Between Tower and RBYC Mark 6 (RBYC6), leaving RBYC6 to starboard.
 - RGYC: Between Tower and RGYC Start Mark (RGYC), leaving RGYC to starboard.
 - MYC: Between Tower and MYC Start Mark (MYC), leaving it to starboard.
 - Wyndham Harbour: Between #2 and #3 lateral marks (WHR, WHG) and extending 100m to seaward of #2.
 - BYS: Between Tower and BYS Mark 0 (BYS0), leaving BYS0 to port.
- C4.2 There is a set of compulsory first legs that must be followed for each starting location. These are listed under Compulsory Legs in *Appendix J Navigators' Challenge Courses*.

Appendix D FINISHING LINES

THIS APPENDIX DESCRIBES THE FINISHING LINES AND PROCEDURES AT EACH OF THE FINISH LOCATIONS.

D1 RMYS TOWER

- D1.1 The Finishing Line shall be an imaginary line between the line on the face of the RMYS Breakwater Tower and RMYS Mark A (RMYSA).
- D1.2 RMYS Mark H (RMYSH) is a crowding buoy laid a short distance off the breakwater. This will be treated as an extension of the breakwater tower. Yachts must not pass between the tower and RMYSH.
- D1.3 There are no Finishing Reports for courses finishing at RMYS.

D2 RBYC TOWER

- D2.1 The Finishing Line shall be an imaginary line between the line on the face of the breakwater tower and RBYC Mark 6 (RBYC6).
- D2.2 A crowding buoy may be laid a short distance off the breakwater. This will be treated as an extension of the breakwater tower. Yachts must not pass between the tower and the crowding buoy.
- D2.3 There are no Finishing Reports for courses finishing at RBYC.

D3 BLAIRGOWRIE

- D3.1 The Finishing Line will be between the Day-Glo Orange Post located on the Blairgowrie Yacht Squadron Tower and BYS Mark 0 (BYS0).
- D3.2 When finishing, yachts shall pass between the Red Navigation Pile adjacent to the east of the Blairgowrie Safe Harbour and BYS0.
- D3.3 Yachts are required to call *Ocean Racing* on the designated Race Frequency when passing directly South (pile bears 0° True) of South Channel Mark 19 (SC19), except if a shortened course has been announced.

D4 GEELONG

- D4.1 The Finishing Line will be between a staff displaying an orange flag on the Race

Committee vessel at the starboard end and yellow cylindrical buoy at the port end, situated between 300 and 500 meters NNE of the RGYC Marina.

- D4.2 In the case of adverse weather conditions or shipping traffic in the Hopetoun Channel, the Race Director may choose to finish the race at mark WS09. In this case, a Committee Vessel will be on station at WS09.
- D4.3 Provisions for informing the fleet of this change will be in accordance with the provisions in Shortening Courses below.
- D4.4 Yachts are required to call *Ocean Racing* on the designated Race Frequency when passing directly South (pile bears 0° True) of the North Cardinal Mark (PR18) between the Pt Richards Channel and the Wilson Spit Channel.

D5 OVERNIGHT NAVIGATORS' CHALLENGE

- D5.1 The objective is to finish as close to 0900 on Sunday, 15 September 2019 as possible.
- D5.2 Yachts must finish between 0800 and 1000. Yachts finishing earlier than 0800 or later than 1000 will be scored DNF.
- D5.3 The Finishing Line will be at HBYC between the WC19 mark and the HBYC clubhouse.
- D5.4 Yachts must sail the following compulsory legs when approaching the finishing line:

Leg	From	To	Round	Dist (nm)
59	R3	PM77	Port	2.1
60	PM77	WC19	Port	0.7

- D5.5 Yachts are required to call *Ocean Racing* on the designated Race Frequency when rounding Port Melbourne Channel 77 (PM77) on approach to the finish line.

D6 SHORTENING COURSES

D6.1 The Race Director may choose to shorten the course should weather conditions warrant it.

D6.2 For all races, courses may be shortened at any mark using the normal RRS procedure.

Notification will be given to the Fleet prior to the lead boat reaching the mark at which the course is to be shortened.

A finish boat displaying the Shorten Course Signal (S - Sierra) may be on station at that mark.

In the event no finish boat is on station, competitors shall pass within 20 metres of the mark and record the time, accurate to one second, at which the mark bears 270°M when observed from the bow. The relative location of the nearest competing boat at the time of finishing should also be recorded (within 1 second)

The self-recorded finish time must be sent by SMS to the Race Director on 0418 396 605 within 30 minutes of crossing the finish line.

D6.3 For races around fixed marks, all courses have been designed with an additional shorten option through the deletion of one designated mark of the course as indicated (Delete to Shorten) in the course descriptions in the appendices listed in SI 5.2.

If the Race Director determines that the shortened course will be used, competitors will be advised of this decision through a radio broadcast on VHF Channel 82.

Courses may be shortened in this way any time before the first yacht reaches the course leg leading to the mark to be deleted.

D7 BERTHING FACILITIES

For the "Destination Races" to Blairgowrie, Geelong, and Hobsons Bay, berths will be made available in the marina of the host club for that event, as directed by the host club representatives.

Appendix E MARKS

THIS APPENDIX CONTAINS THE LOCATION AND DESCRIPTION OF ALL FIXED MARKS USED IN COURSES DESCRIBED IN THESE SAILING INSTRUCTIONS.

These mark descriptions and positions should not be used uncritically. They have been assembled from the best information available but may only be approximate and may contain errors. Skippers and navigators should verify mark information using their own resources.

Mark	Name	Location	Character	Description
ARTH	Arthur The Great	S38° 04.646' E144° 33.185'	Q(3) 10s	Pillar, E Cardinal (BYB)
BYS0	BYS Club Mark 0	S38° 21.265' E144° 46.565'	Mo(B) Y 15s	Can, Yachting
CA2	Carrum #2	S38° 03.071' E145° 04.526'	Unlit	Can, Yellow
FWK	Fawkner Beacon	S37° 56.917' E144° 55.629'	Fl W 5s 11M	Beacon Tower
HC01	Hopetoun Channel #1	S38° 07.054' E144° 26.761'	F G + Iso G 4s 5M	Pile, Starboard Lateral
HC02	Hopetoun Channel #2	S38° 07.163' E144° 26.780'	F R + Iso R 4s 5M	Pile, Port Lateral
HC10	Hopetoun Channel #10	S38° 07.401' E144° 24.125'	Iso R 4s 5M	Pile, Port Lateral
HC14	Hopetoun Channel #14	S38° 07.592' E144° 22.232'	Iso R 4s 5M	Pile, Port Lateral
M1	Centre Buoy	S38° 03.516' E144° 52.224'	Fl(2) Y 10s	Yellow Can
MMYC1	MMYC Club Mark 1	S38° 01.799' E145° 02.396'	Fl Y 5s	Conical, Yachting
MMYC4	MMYC Club Mark 4	S38° 00.778' E145° 03.604'	Fl Y 5s	Conical, Yachting
MYC	MYC Club Mark	S38° 12.520' E145° 01.920'	Unlit	Start Mark Off MYC
OA	Outer Anchorage	S37° 57.010' E144° 51.431'	Fl(4) Y 12s 3M	Pile, Special
P2	Pipeline 2	S37° 55.436' E144° 53.192'	Fl Y 4s	Buoy, Special
P3	Pipeline 3	S37° 53.393' E144° 52.852'	Fl Y 4s	Pile, Special
PGB	Prince George Beacon	S38° 06.400' E144° 44.201'	Fl R 4s 8M	Pile, Port Lateral
PM77	PoM Channel #77	S37° 51.140' E144° 55.792'	Fl(2) G 4s	Pile, Starboard Lateral
PR01	Pt Richards Channel #1	S38° 05.065' E144° 38.563'	F G + Iso G 4s 5M	Pile, Starboard Lateral
PR18	Pt Richards Channel #18	S38° 07.915' E144° 32.083'	Q W	Pile, N Cardinal (BY)
PRE	Pt Richards Channel Entry	S38° 04.954' E144° 39.945'	Q W 9M	Pile, N Cardinal (BY)
R1	Recreational Mark 1	S38° 16.473' E144° 58.361'	Fl(3) Y 10s	Conical, Special
R2	Recreational Mark 2	S37° 54.536' E144° 56.338'	Fl(3) Y 10s	Conical, Special
R3	Recreational Mark 3	S37° 53.172' E144° 56.379'	Fl Y 4s	Spar, Special
RBYC1	RBYC Club Mark 1	S37° 55.632' E144° 58.241'	Fl(4) Y 12s	Conical, Yachting
RBYC2	RBYC Club Mark 2	S37° 55.401' E144° 57.371'	Fl(4) Y 12s	Conical, Yachting
RBYC3	RBYC Club Mark 3	S37° 54.461' E144° 57.161'	Fl(4) Y 12s	Conical, Yachting
RBYC3 Gate	RBYC3 Gate	Imaginary line between RBYC3 and Yellow buoy laid on eastern side of RBYC3		
RBYC4	RBYC Club Mark 4	S37° 53.611' E144° 57.082'	Fl(4) Y 12s	Conical, Yachting
RBYC5	RBYC Club Mark 5	S37° 53.812' E144° 58.462'	Fl(4) Y 12s	Conical, Yachting

Mark	Name	Location	Character	Description
RBYC6	RBYC Club Mark 6	S37° 54.320' E144° 58.530'	Fl(4) Y 12s	Conical, Yachting
RGYC	RGYC Club Mark	S38° 08.524' E144° 22.144'	Fl Y 5s	Conical, Yachting
RMYS A	RMYS Club Mark A	S37° 51.902' E144° 57.465'	Fl(4) Y 10s	Pillar, Yachting
RMYS D	RMYS Club Mark D	S37° 51.491' E144° 57.472'	Fl(4) Y 10s	Pillar, Yachting
RMYS H	RMYS Club Mark H	S37° 51.856' E144° 57.694'	Fl(4) Y 10s	Pillar, Yachting
SC19	South Channel #19	S38° 20.126' E144° 54.479'	Fl(2) G 5s 8M	Pile, Starboard Lateral
SC25	South Channel #25	S38° 17.929' E144° 55.948'	Fl(4) G 12s 8M	Pile, Starboard Lateral
SG	Spoil Ground	S37° 59.067' E144° 53.000'	Fl Y 5s	Pillar, Special
SO10	Sorrento Channel #10	S38° 21.336' E144° 47.313'	Unlit, Red	Pile, Port Lateral
SO12	Sorrento Channel #12	S38° 21.109' E144° 48.508'	Unlit, Red	Pile, Port Lateral
SYC1	SYC Club Mark 1	S37° 57.802' E144° 58.892'	Fl(4) Y 10s	Pillar, Yachting
SYC2	SYC Club Mark 2	S37° 56.602' E144° 57.971'	Fl(4) Y 10s	Pillar, Yachting
SYC3	SYC Club Mark 3	S37° 56.242' E144° 59.252'	Fl(4) Y 10s	Pillar, Yachting
SYC4	SYC Club Mark 4	S37° 56.810' E144° 59.400'	Fl(4) Y 10s	Pillar, Yachting
SYC5	SYC Club Mark 5	S37° 58.812' E144° 58.382'	Fl(4) Y 10s	Pillar, Yachting
SYC6	SYC Club Mark 6	S37° 56.702' E144° 57.082'	Fl(4) Y 10s	Pillar, Yachting
SYC7	SYC Club Mark 7	S37° 55.861' E144° 59.001'	Fl(4) Y 10s	Pillar, Yachting
SYM	Symonds Channel Entrance	S38° 13.910' E144° 50.615'	Q(3) 10s	Pillar, E Cardinal (BYB)
T09	Clearway Mark T09	S37° 57.807' E144° 55.730'	VQ(4) Y 4s 10M	Pile, Special
T10	Clearway Mark T10	S37° 57.776' E144° 55.033'	VQ(4) Y 4s 10M	Pile, Special
T13	Clearway Mark T13	S37° 56.715' E144° 55.766'	VQ(4) Y 4s	Pile, Special
T14	Clearway Mark T14	S37° 56.685' E144° 55.112'	VQ(4) Y 4s	Pile, Special
WC19	Williamstown Channel #19	S37° 51.479' E144° 55.006'	Fl G 2s 2M	Pile, Starboard Lateral
WPY	Edge of Restricted Area	S38° 06.579' E144° 33.245'	Fl Y 6s	Can, Special
WS09	Wilson Spit Channel #9	S38° 07.247' E144° 28.581'	Iso G 4s 5M	Pile, Starboard Lateral
WSPT	Wedge Spit	S38° 02.033' E144° 38.362'	VQ(6)+LFl 10s	Pile, S Cardinal (YB)

Appendix F RMYS FIXED MARK COURSES

THE COURSES TO BE USED FOR THE RMYS FIXED MARK RACE ARE DESCRIBED IN THIS APPENDIX.

All these courses start and finish at the RMYS Race Tower as described in *Appendix C Starting Lines* and in *Appendix D Finishing Lines*. The marks are described in *Appendix E Marks*

Course 01 (~30nm)		
Mark	Rounding	Notes
Start	Northerly	RMYS Tower
RMYS D	Port	
R2	Starboard	
R3	Port	
P3	Port	
OA	Port	
P2	Starboard	Delete to Shorten
SG	Port	Delete to Shorten
SYC5	Port	Delete to Shorten
SYC6	Port	Leave SYC2 to Stb.
Finish		RMYS Tower

Course 02 (~29nm)		
Mark	Rounding	Notes
Start	Southerly	RMYS Tower
R2	Starboard	
R3	Port	
P3	Port	
OA	Port	
P2	Starboard	Delete to Shorten
SG	Port	Delete to Shorten
SYC5	Port	Delete to Shorten
SYC6	Port	Leave SYC2 to Stb
Finish		RMYS Tower

Course 03 (~24nm)		
Mark	Rounding	Notes
Start	Northerly	RMYS Tower
RMYS D	Port	
R2	Port	
SYC2	Starboard	
T09	Starboard	
T10	Starboard	
P3	Port	
P2	Port	
SYC6	Port	Delete to Shorten
RBYC3	Port	
Finish		RMYS Tower

Course 04 (~23nm)		
Mark	Rounding	Notes
Start	Southerly	RMYS Tower
R2	Port	
SYC2	Starboard	
T09	Starboard	
T10	Starboard	
P3	Port	
P2	Port	
SYC6	Port	Delete to Shorten
RBYC3	Port	
Finish		RMYS Tower

Course 05 (~23nm)		
Mark	Rounding	Notes
Start	Northerly	RMYS Tower
RMYS D	Port	
R2	Starboard	
R3	Port	
P3	Port	
P2	Port	
T14	Port	
T13	Port	
RBYC2	Port	
RBYC4	Starboard	
SYC7	Port	Delete to Shorten
Finish		RMYS Tower

Course 06 (~25nm)		
Mark	Rounding	Notes
Start	Southerly	RMYS Tower
RBYC3	Port	
SYC5	Port	
SYC6	Starboard	
R2	Port	
OA	Starboard	Delete to Shorten
P3	Starboard	
R3	Port	
Finish		RMYS Tower

Course 07 (~23nm)		
Mark	Rounding	Notes
Start	Northerly	RMYS Tower
RMYS D	Port	
RBYC4	Starboard	
R3	Port	
P3	Port	
OA	Port	
SG	Port	Delete to Shorten
P2	Starboard	
RBYC2	Port	
Finish		RMYS Tower

Course 08 (~22nm)		
Mark	Rounding	Notes
Start	Southerly	RMYS Tower
RBYC4	Starboard	
R3	Port	
P3	Port	
OA	Port	
SG	Port	Delete to Shorten
P2	Starboard	
RBYC2	Port	
Finish		RMYS Tower

Course 09 (~19nm)		
Mark	Rounding	Notes
Start	Northerly	RMYS Tower
RMYS D	Port	
RBYC4	Starboard	
R3	Port	
P3	Port	
OA	Port	Delete to Shorten
P2	Starboard	
RBYC2	Port	
Finish		RMYS Tower

Course 10 (~18nm)		
Mark	Rounding	Notes
Start	Southerly	RMYS Tower
RBYC4	Starboard	
R3	Port	
P3	Port	
OA	Port	Delete to Shorten
P2	Starboard	
RBYC2	Port	
Finish		RMYS Tower

Appendix G BLAIRGOWRIE PASSAGE COURSES

THE COURSES TO BE USED FOR THE BLAIRGOWRIE PASSAGE RACE ARE DESCRIBED IN THIS APPENDIX.

All these courses start at the RBYC Tower as described in *Appendix C Starting Lines* and finish at Blairgowrie as described in *Appendix D Finishing Lines*. The marks are described in *Appendix E Marks*.

Course 31 (~34nm)		
Mark	Rounding	Notes
Start	Northerly	RBYC Tower
RBYC5	Port	
SYC6	Port	
SC25	Starboard	
SC19	Starboard	
SO12	Starboard	
SO10	Starboard	
Finish		BYS Tower

Course 32 (~33nm)		
Mark	Rounding	Notes
Start	Southerly	RBYC Tower
SYC6	Port	
SC25	Starboard	
SC19	Starboard	
SO12	Starboard	
SO10	Starboard	
Finish		BYS Tower

Appendix H RBYC FIXED MARK COURSES

THE COURSES TO BE USED FOR THE RBYC FIXED MARK RACE ARE DESCRIBED IN THIS APPENDIX.

All these courses start and finish at the RBYC Race Tower as described in *Appendix C Starting Lines* and in *Appendix D Finishing Lines*. The marks are described in *Appendix E Marks*.

Course 21 (~28/20nm)		
Mark	Rounding/Passing	Notes
Start	Northerly	RBYC Tower
RBYC5	Port	
SYC2	Port	
SYC5	Port	
MMYC4	Starboard	
MMYC1	Starboard	
SYC5	Port	
SG	Starboard	Delete to Shorten
SYC5	Port	
SYC2	Starboard	
RBYC1	Starboard	
Finish		RBYC Tower

Course 23 (~18/17nm)		
Mark	Rounding/Passing	Notes
Start	Northerly	RBYC Tower
RBYC5	Port	
RBYC1	Port	
SYC3	Starboard	
SYC5	Starboard	
SG	Starboard	
T14	Starboard	
SYC2	Port	Delete to Shorten
RBYC2	Starboard	
Finish		RBYC Tower

Course 22 (~27/19nm)		
Mark	Rounding/Passing	Notes
Start	Southerly	RBYC Tower
SYC2	Port	
SYC5	Port	
MMYC4	Starboard	
MMYC1	Starboard	
SYC5	Port	
SG	Starboard	Delete to Shorten
SYC5	Port	
SYC2	Starboard	
RBYC1	Starboard	
Finish		RBYC Tower

Course 24 (~17/16nm)		
Mark	Rounding/Passing	Notes
Start	Southerly	RBYC Tower
RBYC1	Port	
SYC3	Starboard	
SYC5	Starboard	
SG	Starboard	
T14	Starboard	
SYC2	Port	Delete to Shorten
RBYC2	Starboard	
Finish		RBYC Tower

Course 25 (18 nm Approx))		
Mark	Rounding/Passing	Notes
Start		Windward start from Committee Boat
P2	Port	
RBYC1	Starboard	
T10	Port	
SYC1	Port	
Finish		RBYC Tower

Supplementary Short Course C – 8.2NM Approx.		
Mark	Rounding/Passing	Notes
Start	Southerly	RBYC Tower
RBYC 2	Starboard	
RBYC 3	Starboard	
RMYS B	Starboard	
RBYC 1	Port	
Finish		RBYC Tower

Supplementary Short Course A – 9.3NM Approx.		
Mark	Rounding/Passing	Notes
Start	Northerly	RBYC Tower
RBYC 5	Port	
R 2	Port	
SYC 2	Port	
SYC 4	Port	
RBYC 1	Starboard	
Finish		RBYC Tower

Supplementary Short Course D – 12.5NM Approx.		
Mark	Rounding/Passing	Notes
Start	Southerly	RBYC Tower
SYC 3	Starboard	
RBYC 2	Port	
SYC 2	Port	
RBYC 4	Starboard	
RBYC 1	Port	
Finish		RBYC Tower

Supplementary Short Course B – 10.1NM Approx.		
Mark	Rounding/Passing	Notes
Start	Southerly	RBYC Tower
SYC 2	Starboard	
RBYC 3 B	Starboard	
RMYS B	Starboard	
RBYC 1	Port	
Finish		RBYC Tower

Appendix I GEELONG PASSAGE COURSES

THE COURSES TO BE USED FOR THE GEELONG PASSAGE RACE ARE DESCRIBED IN THIS APPENDIX.

All these courses will be started from the RBYC Committee boat as described in *Appendix C Starting Lines* and will finish at Geelong as described in *Appendix D Finishing Lines*. The marks are described in *Appendix E Marks*.

Course 41 (~34nm)		
Mark	Rounding	Notes
Start		Windward Boat start
RBYC3 Gate		Pass through
FWK	Starboard	
PR01	Starboard	
PR18	Starboard	
WS09	Port	Alternative Finish
HC01	Port	Alternative Finish
HC10	Port	
Finish		RGYC Finish

Course 43 (~56nm)		
Mark	Rounding	Notes
Start		Windward Boat start
RBYC3 Gate		Pass through
R1	Starboard	
PGB	Port	
PRE	Port	
PR18	Starboard	
WS09	Port	Alternative Finish
HC01	Port	Alternative Finish
HC10	Port	
Finish		RGYC Finish

Course 42 (~46nm)		
Mark	Rounding	Notes
Start		Windward Boat start
RBYC3 Gate		Pass through
CA2	Starboard	
PR01	Port	
PR18	Starboard	
WS09	Port	Alternative Finish
HC01	Port	Alternative Finish
HC10	Port	
Finish		RGYC Finish

Course 44 (~52nm)		
Mark	Rounding	Notes
Start		Windward Boat start
RBYC3 Gate		Pass through
CA2	Starboard	
P2	Port	
PR01	Starboard	
PR18	Starboard	
WS09	Port	Alternative Finish
HC01	Port	Alternative Finish
HC10	Port	
Finish		RGYC Finish

Continued

Course 45 (~39nm)		
Mark	Rounding	Notes
Start		Windward Boat start
RBYC3 Gate		Pass through
SYC5	Starboard	
P2	Port	
PR01	Starboard	
PR18	Starboard	
WS09	Port	Alternative Finish
HC01	Port	Alternative Finish
HC10	Port	
Finish		RGYC Finish

Course 46 (~46nm)		
Mark	Rounding	Notes
Start		Windward Boat start
RBYC3 Gate		Pass through
FWK	Port	
SG	Starboard	
P3	Port	
PGB	Starboard	
PRE	Port	
PR18	Starboard	
WS09	Port	Alternative Finish
HC01	Port	Alternative Finish
HC10	Port	
Finish		RGYC Finish

Appendix J NAVIGATORS' CHALLENGE COURSES

THE COURSES TO BE USED FOR THE OVERNIGHT NAVIGATOR'S CHALLENGE ARE DESCRIBED IN THIS APPENDIX

The start lines will depend on the starting locations as described in *Appendix C Starting Lines*. Each start location will have one or more compulsory legs, listed in *Compulsory Legs* below, that must be followed before any of the optional legs, listed in *Optional Legs* below, can be sailed. All legs are summarised in *Leg Summary*. All marks are described in *Appendix E Marks*. Scoring details are listed in *Scoring Summary* below.

J1 COMPULSORY LEGS

The following legs are required to be sailed immediately after starting from the different locations:

Leg	From	To	Round	Dist (nm)	Comments
RGYC Start					
1	RGYC	HC14	Starboard	0.9	Between RGYC Tower & RGYC start mark, leaving to starboard
2	HC14	HC02	Starboard	3.6	
3	HC02	WPY	Port	5.1	
RBYC Start					
4	RBYC6	OA	Comment	6.2	Between RBYC Tower & RBYC6, in a southerly direction, leaving RBYC6 to starboard Round OA to starboard if P3 is next, otherwise to port
MYC Start					
5	MYC	SYM	Starboard	9.0	Between MYC Tower & MYC, leaving MYC to starboard
Wyndham Harbour Start					
6	WH	OA	Comment	7.1	Between #3 & #2 lateral marks and extending 100m to seaward of #2, round OA to port if P3 next, otherwise starboard
BYS Start					
7	BYS0	SO10	Port	0.6	Between BYC Tower & BYS0 mark, leaving BYS0 to port
8	SO10	SC19	Port	5.8	Keep clear of all shipping in the South Channel

J2 OPTIONAL LEGS

J2.1 After starting and sailing the compulsory legs for their start location, yachts may sail any choice of the approved legs listed below, noting the following:

- Legs may be sailed in either direction.
- A yacht may not sail the same leg, in any direction, more than twice.
- Yachts may round a mark on either side.

Leg	Mark 1	Mark 2	Dist (nm)
9	R1	SYM	6.6
10	R1	WSPT	21.4
11	R1	CA2	14.3
12	R1	M1	13.8
13	R1	SYC1	18.7
14	R2	R3	1.4
15	R2	P2	2.6

Leg	Mark 1	Mark 2	Dist (nm)
16	R2	P3	3.0
17	R2	M1	9.6
18	R2	SYC1	3.9
19	R3	P3	2.9
20	R3	P2	3.4
21	OA	P3	3.7
22	OA	WSPT	11.6
23	OA	MYC	17.6
24	OA	PRE	12.0
25	OA	SYM	16.9
26	OA	M1	6.6
27	OA	CA2	12.1
28	OA	SYC1	5.9
29	SYC1	P2	5.1
30	SYC1	PRE	16.5
31	SYC1	WSPT	16.8
32	SYC1	M1	7.7
33	SYC1	CA2	7.7
34	SYC1	SYM	17.4
35	PRE	P3	15.4
36	PRE	WPY	5.5
37	PRE	ARTH	5.2

Leg	Mark 1	Mark 2	Dist (nm)
38	PRE	M1	9.8
39	PRE	MYC	18.9
40	CA2	WSPT	20.7
41	CA2	P2	11.8
42	CA2	M1	9.8
43	CA2	SYM	15.5
44	CA2	MYC	9.6
45	WPY	ARTH	1.7
46	WPY	WSPT	6.1
47	ARTH	WSPT	4.9
48	M1	WSPT	11.0
49	M1	MYC	11.8
50	M1	SYM	10.4
51	MYC	SYM	9.0
52	MYC	WSPT	21.3
53	MYC	P2	18.4
54	MYC	R1	4.8
55	WSPT	P2	13.5
56	SC19	SYM	6.9
57	SC19	M1	16.7
58	SC19	R1	4.8

J3 SCORING SUMMARY

- J3.1 Scoring will be based on the Actual Distance sailed by each yacht.
- J3.2 The Actual Distance is adjusted by dividing it by the handicap for each division entered to give an Adjusted Distance for each handicap category.
- J3.3 The Penalty for not finishing at the designated time (0900) will be given by the formula:

$$([\text{minutes early or late}] / 60) \times \text{Average Speed}$$
- J3.4 Average Speed is calculated as the Actual Distance divided by 21, the total hours of the challenge. The calculated Penalty will be deducted from the Adjusted Distance to give

Example of Scoring Calculation (AMS Division)

the Final Distance. The competitor in each division with the highest Final Distance will be deemed the winner of that division.

- J3.5 A copy of the Navigator's Log from each finishing yacht is to be submitted to the Race Director within 2 hours of its finish for calculation and verification of Actual Distance sailed.
- J3.6 The Navigator's Log must clearly show the following information:
- Marks rounded in sequence
 - Position at each Radio Position Schedule
 - Cumulative (at each mark) nautical miles sailed

Yacht	Actual Distance	Average Speed	AMS Handicap	Adjusted Distance	Finish Delta (min)	Penalty	Final Distance
Abel	105.2	5.01	0.900	116.89	2.10	0.18	116.71
Baker	98.2	4.68	0.803	122.29	1.10	0.09	122.21
Charlie	149.4	7.11	1.091	136.94	7.03	0.87	136.07

J4 ADDITIONAL SAFETY REGULATIONS

J4.1 All owners of competing yachts are to complete and sign a Safety Equipment Compliance Declaration for Category 5N (2017 – 2021). This is to be submitted to the Race Director via email by 1200 on Friday, 13 September 2019. This form does not require a formal National Equipment Audit (NEA) for entry to this event. A copy of this form can be found on the ORCV Website (www.orcv.org.au) under *Winter Series Race Documents*.

J4.2 All skippers are to complete a Crew Registration Form for their vessel which is to be submitted to the Race Director via email by 1700 on Friday, 13 September 2019. A copy of this form can be found on the ORCV

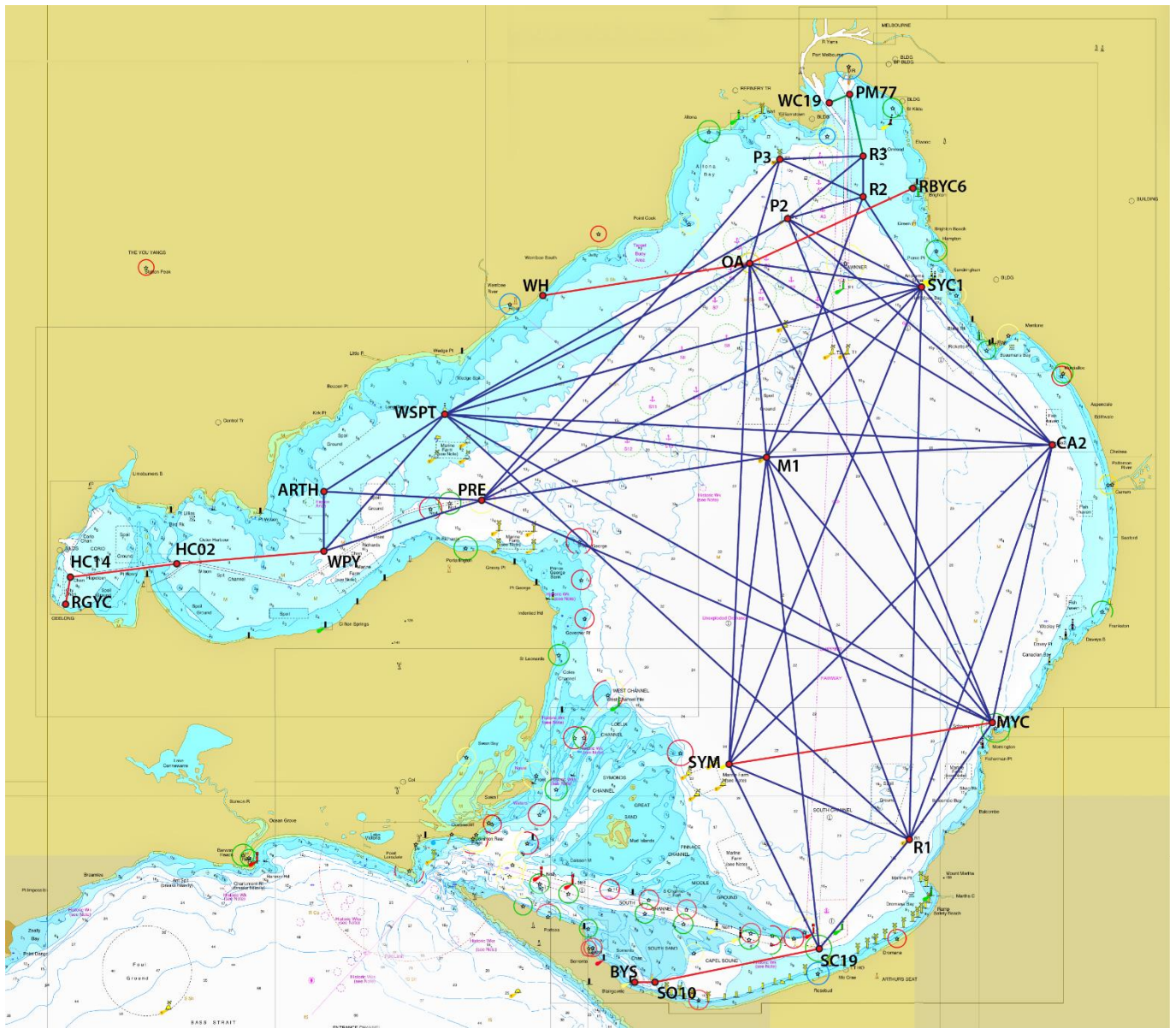
Website (www.orcv.org.au) under Winter Series Race Documents.

J4.3 Any late changes of crew are to be sent via SMS to the Race Director Mobile (0418 396 605) by 1100 on the morning of the race, ensuring that the following information is provided:

- Crew member being replaced
- New crew member (Name, AS Number, Emergency Contact Name & Number)

J4.4 Failure to comply with the provisions of this section (*J4 Additional Safety Regulations*) will result in the competitor being scored DNC for the event.

J5 LEG SUMMARY



Appendix K CRUISING SPECIAL INSTRUCTIONS

THIS APPENDIX CONTAINS ANY SPECIAL REGULATIONS COVERING THE CRUISING DIVISIONS.

K1 USE OF ENGINE

During the two passage races (Blairgowrie and Geelong), competitors in the Cruising Division may use their engine for the purpose of propulsion, under the following conditions:

- From a time of no less than one (1) hour after the start of the race, if the True Wind Strength (TWS) drops below six (6) knots, a competitor may use their engine to maintain a maximum speed of five (5) knots of Speed Over Ground (SOG) until such time that the True Wind Strength exceeds six (6) knots.
- If the Race Director chooses to announce a Shortened Course, competitors in the Cruising Division may start engines and proceed to the Finishing Line at a Speed Over Ground (SOG) not exceeding six (6) knots.
- All Competitors in the Cruising Division shall declare the Time of Motoring in hours, minutes and seconds, by SMS to the Race Director's phone (0418 396 605) within 30 minutes of crossing the finish line.