

SAILING INSTRUCTIONS

2019 LATITUDE SERIES PURSUIT YACHT RACE



LATITUDE PURSUIT
ORCV BAY EVENT

Version 1.01 Final

SAILING INSTRUCTIONS

THE 2019 LATITUDE SERIES PURSUIT YACHT RACE WILL BE CONDUCTED ON THE WATERS OF PORT PHILLIP. THE RACE IS ORGANISED AND CONDUCTED BY THE OCEAN RACING CLUB OF VICTORIA, INC.

1. RULES

1.1. The race will be governed by the current versions of:

- The 2017-2020 Racing Rules of Sailing (RRS) of the World Sailing (WS), together with the pre-prescriptions and safety regulations of Australian Sailing (AS);
- The Special Regulations of the Ocean Racing Club of Victoria (ORCV);
- The International Regulations for the Prevention of Collisions at Sea;

except as amended by the Notice of Race and these Sailing Instructions.

1.2. All times in these Sailing Instructions are Australian Eastern Daylight Time (AEDT) unless otherwise stated.

2. NOTICES TO COMPETITORS

2.1. Notices to competitors will be posted on the ORCV website www.orcv.org.au.

2.2. Any change to these Sailing Instructions may also be posted on the ORCV website.

2.3. Any alterations to these instructions will be announced after the Sign-On Schedule.

3. THE START

The Start will be as described in *Appendix B Start*.

4. THE COURSE

The Course will be as described in *Appendix C Course*.

5. THE FINISH

The Finish shall be as described in *Appendix D Finish*.

6. TIME LIMIT

The Time Limit for the race shall be sunset, at time 2020. All yachts not finished by this time shall be scored DNF.

7. PROTESTS AND REQUESTS FOR REDRESS

7.1. Protests or requests for redress are to be lodged with an official of the ORCV or the ORCV office no later than 1200 on Monday, 25 November 2019.

7.2. Yachts intending to protest or request redress must inform the Race Director in person or by radio giving any details as may be known at the time.

7.3. Protests or requests for redress will be heard at a time and place advised.

7.4. All requests for redress involving the official time sheet must be submitted as soon as possible after the posting of the results but no later than 1200 on Monday, 25 November 2019.

7.5. The protest committee shall not be entitled to abandon the race as a consideration for redress (This amends RRS 64.2).

8. PENALTY SYSTEM

8.1. If, after a protest and hearing, a yacht is found to have infringed a rule, the protest committee may disqualify or otherwise penalise the yacht in accordance with the provisions of RRS 64.

8.2. The protest committee may apply a time penalty for a breach of a rule or the Sailing Instructions declared by an infringing competitor without a hearing or after a hearing if a protest is contested.

8.3. The following penalties will be applied for breaches of these Sailing Instructions or the Racing Rules of Sailing (RRS) at the discretion of the Protest Committee:

- **For a minor infringement – 15 minutes**
- **For a significant infringement – 30 minutes**
- **For a serious infringement – the penalty will rest with the protest committee and may result in a time penalty or disqualification.**

8.4. All penalties will be noted on the time sheet and shall be applied to finishing times. Yacht positions will be adjusted after penalties are

applied. (This complements RRS 64.1 and amends RRS 44.3).

9. YACHTS RETIRING

Yachts retiring shall inform the race committee as described in A6 Yachts Retiring.

10. SAFETY REGULATIONS

- 10.1. The Safety Category and regulations are as set out in the Notice of Race.
- 10.2. The crew of yachts sailed Double Handed must wear lifejackets at all times when on deck.
- 10.3. The ORCV strongly recommends that safety harnesses and suitable lifejackets be worn whenever conditions warrant, particularly in rough weather, at night or when sailing short-handed.
- 10.4. Attention is drawn to Victorian regulations which stipulate the mandatory wearing of lifejackets when on deck during times of heightened risk. This includes crossing a bar, transiting the Heads (classified as a bar), sailing at night and when the weather or weather forecast indicates risk. For full details, consult the Transport Safety Victoria website (www.transportsafety.vic.gov.au).
- 10.5. Yachts shall keep clear of all commercial shipping (vessels more than 35 metres in length) whilst within Port Phillip as required by Port of Melbourne Corporation Harbour Master's Directions. Ships are restricted in their ability to manoeuvre while entering Port Phillip and in the various channels and yachts should take any necessary avoiding action early.
- 10.6. In the event of avoiding action becoming necessary, a yacht may start its engine and motor to avoid a shipping hazard, on a course away from the hazard for as long as necessary.
- 10.7. A yacht that takes such action shall return to the position at which the engine was started, cease motoring and resume racing as soon as possible. The details of any such action must be reported to the Race Director on the Declaration after finishing.
- 10.8. Attention is drawn to Rule 9 (a) and Rule 9 (b) of the International Regulations for Preventing Collisions at sea, 1972. Yachts deemed to have impeded the progress of a commercial vessel will be disqualified.
- 10.9. A yacht or its equipment may be inspected at any time for compliance with the ORCV safety rules, the notice of race and these sailing instructions.

- 10.10. The Race Director may, at his absolute discretion, disqualify a yacht from participating or continuing to participate in the race if he believes that it is unsafe for that yacht to commence or continue to race.

11. UNSUITABLE CONDITIONS

- 11.1. After commencement of the race, the race can be terminated at the race officer's discretion.
- 11.2. The race organising authority may deem the race to be abandoned, rescheduled at another time or deemed to be shortened.
- 11.3. Prorated positions may be used to determine a result for the race and/or for any series.
- 11.4. Terminating the race will be advised by radio communications as available.

12. RACE COMMUNICATIONS

Race communications procedures are detailed in *Appendix A Race Communications*.

13. DISCLAIMER OF LIABILITY

- 13.1. All those taking part in this race do so at their own risk and responsibility.
- 13.2. Acceptance of a yacht as an entrant in the race is not to be taken as express or implied acceptance on the part of the ORCV and/or any of its Flag Officers, Committee, Equipment Auditors or any other members, of the fitness of any yacht or any equipment on such yacht to safely compete in the race, and/or deal with any and all eventualities of the contemplated passage.
- 13.3. It is the responsibility of each skipper of each competing yacht to decide whether his/her yacht is fit and suitably crewed for the intended purpose, and neither the ORCV nor any club, person or company connected with the organisation of the race is responsible for the seaworthiness of any yacht whose entry is accepted.
- 13.4. Attention is drawn to Fundamental Rule 4 "Decision to Race" of the RRS which states:

The responsibility for a boat's decision to participate in a race or to continue racing is hers alone.

14. APPENDICES

The attached Appendices A, B, C and D form part of these Sailing Instructions.

Appendix A RACE COMMUNICATIONS

THIS APPENDIX DESCRIBES THE RADIO AND OTHER COMMUNICATIONS PROCEDURES TO BE FOLLOWED DURING THIS RACE.

A1 GENERAL

- A1.1 While racing, a yacht shall neither make nor receive radio communications not available to all yachts. This restriction also applies to mobile telephones.
- A1.2 It is compulsory for all yachts to respond to all scheduled radio communications, including the Sign-On Schedule.

A2 RACE FREQUENCIES

- A2.1 Radio communications for this race will be on VHF Channel 82 (Race Frequency) unless yachts are directed to alternate frequencies by one of the race radio stations listed below.
- A2.2 The Race Director or others of the Race Committee will be available on *0418 396 605*, the Race Director's Phone.
- A2.3 Yachts are required to monitor VHF Channel 16 and the Race Frequency at all times when not actually using the radio with other channels.

A3 RADIO STATIONS

- A3.1 All schedules will be conducted by ORCV using the call sign *Ocean Racing*.
- A3.2 Any other yacht or station nominated by *Ocean Racing* will provide assistance where necessary.

A4 SIGN-ON SCHEDULE

- A4.1 A sign on schedule will be conducted before the race on the race frequency by *Ocean Racing* commencing at 0930 on Sunday, 24 November 2019.
- A4.2 Yachts will be called in alphabetical order to confirm that they are starters in the race.
- A4.3 Yachts intending to start in the race should respond:

{yacht name} is a starter, we comply with the Notice of Race, {xx} persons on board, OVER

where [Yacht Name] is the name of the yacht concerned and [xx] is the number of persons on board.
- A4.4 Yachts that do not respond on the first call must wait until they are called again at the end of the schedule.
- A4.5 Any yacht failing to respond on the race frequency or demonstrating unsatisfactory radio operations during this schedule shall not be considered a starter in the event and shall be scored DNS.
- A4.6 Any alterations to the sailing instructions or to starting times applicable for the race will be broadcast following completion of this schedule. All yachts are advised to maintain a listening watch at this time.

A5 YACHT START TIMES

- A5.1 Yacht Start Times will be announced on the race frequency as they are reached.
- A5.2 Premature starters may be identified on the race frequency.

A6 YACHTS RETIRING

- A6.1 Should a yacht retire from the race every effort must be made to advise *Ocean Racing* as soon as possible and to give the following information:
 - Time and position at the time of retirement
 - Reason for retirement
 - The state of the crew
 - The port to which the yacht is retiring

- A6.2 Yachts that retire shall continue to monitor the race frequency and respond to any radio messages from *Ocean Racing* until such time as they reach a safe harbour.
- A6.3 Within two hours of arrival at a safe harbour, contact must be made with *Ocean Racing* by VHF radio or by telephone on the Race Director's phone to confirm safe arrival. Failure to comply with this requirement may prejudice acceptance of an entry in future races.

A7 SUMMARY

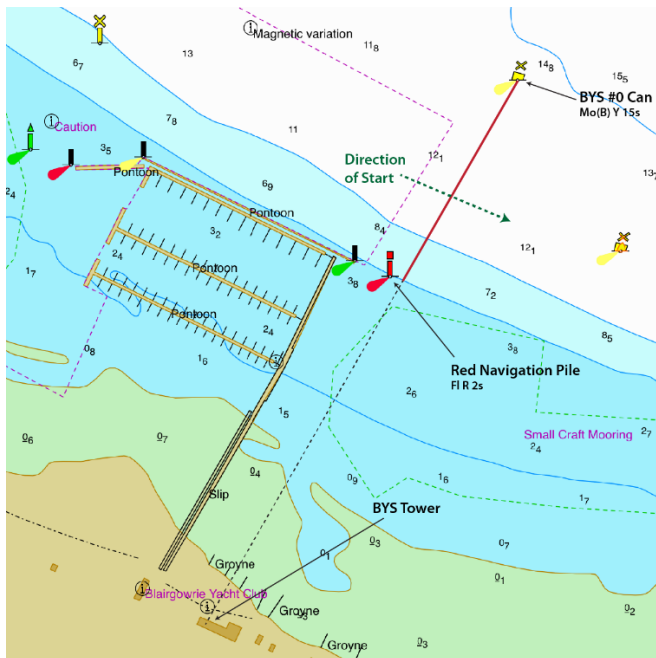
Date	Time	Action	Frequency	Station
24 November	0930	Sign-On Schedule	VHF Channel 82	Ocean Racing
	0955	Warning Signal	VHF Channel 82	
	1000 - 1055	Starting	VHF Channel 82	
	At each yacht's starting times	Individual start times announced	VHF Channel 82	
	After each yachts' starting times	Individual recalls may be notified	VHF Channel 82	

Appendix B START

THIS APPENDIX CONTAINS INFORMATION ABOUT THE STARTING LINE AND THE STARTING PROCESS. NOTE: THE POSITIONS SHOWN IN THESE DIAGRAMS ARE APPROXIMATE AND FOR PLANNING PURPOSES ONLY. THE DIAGRAMS SHOULD NOT BE USED FOR NAVIGATION AND THE POSITIONS SHOWN MAY VARY ON THE DAY.

B1 STARTING LINE

- B1.1 The starting line will be between the Day-Glo Orange line located on the Blairgowrie Yacht Squadron Tower and BYS #0 (see the diagram below).
- B1.2 When starting, boats shall pass between the Red Navigation Pile adjacent to the east of the Blairgowrie Safe Harbour and the cone buoy (BYS #0) located at approximately S38° 21.265' E144° 46.565'.



B2 START SEQUENCE

- B2.1 The Start Time for the first yacht or yachts will be 1000 on Sunday, 24 November 2019 in the vicinity of the Blairgowrie Yacht Squadron (BYS) marina, always allowing the Race Committee, at their discretion, to postpone to another time.
- B2.2 Yachts shall start thereafter not earlier than the times allocated to them. These will be published on the web site and will be posted at the Blairgowrie Yacht Squadron on the evening of Saturday, 23 November 2019.
- B2.3 The starting sequence will be as follows:
0955 Warning, Radio Announce
1000 Start Signal (first yacht(s)), Radio Announce

The radio announcements will be on the race frequency. This changes RRS 26.

The individual yacht starting times will be announced on the race frequency as they occur. The last yacht will start not later than 1055.

B3 RECALLS

- B3.1 When, at a yacht's starting time, any part of the yacht's hull, crew or equipment is on the course side of the starting line or its extensions, the name/s or sail number/s of the offending yacht/s may be advised on the Race Frequency as soon as practicable. This alters Rule 29.1.
- B3.2 There will be no general recall.

Appendix C COURSE

THIS APPENDIX DESCRIBES THE COURSE AND HOW IT IS TO BE SAILED. NOTE: THE POSITIONS SHOWN IN THESE DIAGRAMS ARE APPROXIMATE AND FOR PLANNING PURPOSES ONLY. THE DIAGRAMS SHOULD NOT BE USED FOR NAVIGATION AND THE POSITIONS SHOWN MAY VARY ON THE DAY.

C1 COURSE

From the Starting Line to the Finishing Line after rounding the following marks leaving them the side indicated:

- Sorrento Channel Mark 10 (port)
- Sorrento Channel Mark 12 (port)
- South Channel Mark 19 (port)
- SYC No 1 (starboard)
- Anonyma Shoal West (starboard)

C2 MARKS

The descriptions and approximate positions of the marks to be rounded or passed are:

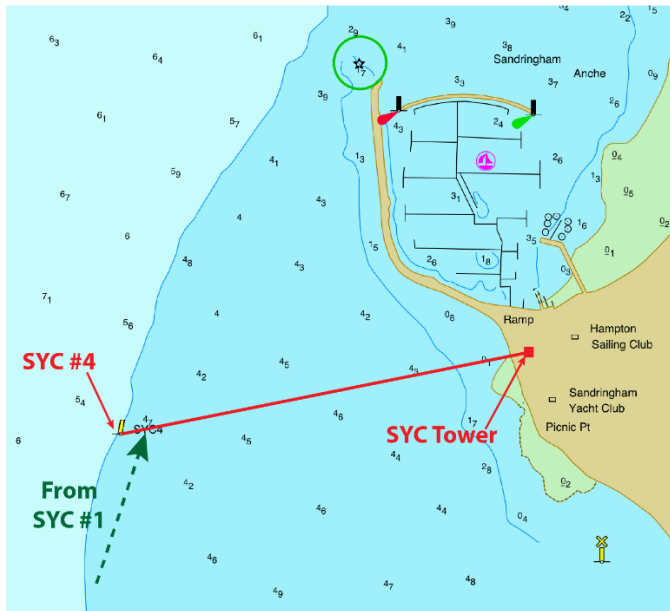
Name	Location	Description
Sorrento Channel Mark 10	S38° 21.338' E144° 47.309'	Red Port Lateral Pile
Sorrento Channel Mark 12	S38° 21.102' E144° 48.508'	Red Port Lateral Pile
South Channel Mark 19	S38° 20.12' E144° 54.45'	Green Starboard Lateral Pile
SYC No 1	S37° 57.81' E144° 58.88'	Yellow Special Pillar Buoy
Anonyma Shoal West	S37° 57.44' E144° 59.329'	West Cardinal (YBY) Pile

Appendix D FINISH

THIS APPENDIX DESCRIBES THE FINISHING LINE AND THE FINISHING PROCEDURES. NOTE: THE POSITIONS SHOWN IN THESE DIAGRAMS ARE APPROXIMATE AND FOR PLANNING PURPOSES ONLY. THE DIAGRAMS SHOULD NOT BE USED FOR NAVIGATION AND THE POSITIONS SHOWN MAY VARY ON THE DAY.

D1 FINISHING LINE

- D1.1 The Finishing Line shall be an imaginary line between the sighting indicator in the SYC Race Control Tower at the starboard end and SYC No 4, a yellow spar buoy approximately 0.4nm bearing 243°M from SYC Race Control Tower, at the port end (see the diagram below).
- D1.2 A clearance mark may be laid adjacent to the breakwater and yachts approaching the line shall leave this clearance mark to starboard.



D2 FINISHING PROCEDURE

- D2.1 Yachts are to record their finish times, accurate to one second, and to forward that information by SMS to the Race Director on 0418 0396 605.
- D2.2 Finishing times should be forwarded as soon as practical and within 5 minutes of the yacht finishing.
- D2.3 A yacht crossing the finishing line correctly is deemed to have made a declaration that all rules have been complied with and that the course has been sailed correctly. If a skipper is uncertain as to whether a rule has been breached, he or she should report the circumstances to an ORCV official. A written report may be required.