

SAILING INSTRUCTIONS

2019 MELBOURNE TO APOLLO BAY YACHT RACE



APOLLO BAY
ORCV OCEAN RACE

Version 1.00 Final

SAILING INSTRUCTIONS

THE 2019 MELBOURNE TO APOLLO BAY YACHT RACE WILL BE CONDUCTED ON THE WATERS OF PORT PHILLIP AND BASS STRAIT. THE RACE IS ORGANISED AND CONDUCTED BY THE OCEAN RACING CLUB OF VICTORIA.

1. RULES

1.1. The race shall be governed by the current versions of:

- the 2017-2020 Racing Rules of Sailing (RRS) of World Sailing (WS),
- the Prescriptions and Special Regulations of Australian Sailing (AS),
- the Special Regulations of the Ocean Racing Club of Victoria (ORCV),
- where applicable, the rules and regulations of the Australian Measurement System (AMS) and the IRC Rule Parts A, B and C;
- the Notice of Race,

except as amended by these Sailing Instructions.

1.2. All times in these Sailing Instructions are Australian Eastern Standard Time (AEST) unless otherwise stated.

1.3. Between the hours of Sunset and Sunrise, RRS 10 to 22 inclusive shall cease to be applicable and shall be replaced by the International Regulations for the Prevention of Collision at Sea.

1.4. For the purpose of this race, the times of Sunrise and Sunset shall be as follows:

- Sunrise: 0711
- Sunset: 1725

2. NOTICES TO COMPETITORS

2.1. Notices to competitors will be posted on the ORCV website www.orcv.org.au.

2.2. Any change to the Sailing Instructions may be posted on the ORCV website (www.orcv.org.au). Any such alterations will be announced after the Sign On Schedule or during the Shipping Advice Broadcast as detailed in *Appendix A Race Communications*.

3. THE START

The start is as described in *Appendix B Start*.

4. THE COURSE

The course is as described in *Appendix C Course*.

5. THE FINISH

The finish is as described in *Appendix D Finish*.

6. PROTESTS & REQUESTS FOR REDRESS

6.1. Protests or requests for redress are to be lodged with an official of the ORCV or the ORCV office no later than 1200 on Monday, 20 May 2019.

6.2. Yachts intending to protest or request redress must inform the Race Director giving any details as may be known at the time using their declarations, on a protest form or by radio.

6.3. Protests or requests for redress will be heard at a time and place to be advised.

6.4. All requests for redress involving the official time sheet must be submitted as soon as possible after the posting of the results but no later than 1200 on Monday, 20 May 2019.

6.5. The protest committee shall not be entitled to abandon the race as a consideration for redress (amends RRS 64.2).

7. PENALTY SYSTEM

7.1. If, after a protest and hearing, a yacht is found to have infringed a rule, the protest committee may disqualify or otherwise penalise the yacht in accordance with the provisions of RRS 64.

7.2. The protest committee may apply a time penalty for a breach of a rule or the Sailing Instructions declared by an infringing competitor without a hearing or after a hearing if a protest is contested.

7.3. The following penalties will be applied for breaches of these Sailing Instructions or the Racing Rules of Sailing (RRS), including any modification noted in the Notice of Race, at the discretion of the Protest Committee:

- For a minor infringement – 15 minutes

- For a significant infringement – 60 minutes
 - For a serious infringement – the penalty will rest with the protest committee and may result in a time penalty or disqualification.
- 7.4. All penalties will be noted on the time sheet and shall be applied to finishing times. Yacht positions will be adjusted after penalties are applied (complements RRS 64.1 and amends RRS 44.3).
- 7.5. A yacht's failure to report their position in accordance with SI A8 without reasonable cause may result in a penalty of 20 minutes being added to their elapsed time. This will be at the Race Committee's discretion, having regard to the circumstances (amends RRS 60.2).
- 7.6. Yachts that sail within the bounds of the Port Phillip Heads Exclusion Zone, described in SI C3, shall receive a 10% penalty to their elapsed time.

8. YACHTS RETIRING

Yachts retiring shall inform the race committee as described in *A12 Yachts Retiring*.

9. SAFETY REGULATIONS

- 9.1. The Safety Category and regulations are as set out in the Notice of Race.
- 9.2. The ORCV strongly recommends that safety harnesses and suitable lifejackets be worn whenever conditions warrant, particularly in rough weather, at night or when sailing short-handed.
- 9.3. The crew of yachts sailed Double Handed must wear lifejackets at all times when on deck.
- 9.4. In particular, attention is drawn to Victorian regulations which stipulate the mandatory wearing of lifejackets when on deck during times of heightened risk. This includes crossing a bar, transiting the Heads (classified as a bar), sailing at night and when the weather or weather forecast indicates risk. For full details, consult the Transport Safety Victoria website (www.transportsafety.vic.gov.au).
- 9.5. Yachts shall keep clear of all commercial shipping (vessels more than 35 metres in length) while within Port Phillip and particularly while transiting Port Phillip Heads, as required by Port of Melbourne Corporation Harbour Master's Directions. Ships are restricted in their ability to manoeuvre while

entering Port Phillip and yachts should take any necessary avoiding action early.

- 9.6. In the event of avoiding action becoming necessary, a yacht may start its engine and motor to avoid a shipping hazard, on a course perpendicular to the ship's track for as long as necessary.
- 9.7. A yacht that takes such action shall return to the location they started motoring, cease motoring and resume racing as soon as possible. The details of any such action must be reported to the Race Director on the Declaration after finishing.
- 9.8. Attention is drawn to Rule 9 (a) and Rule 9 (b) of the International Regulations for Preventing Collisions at Sea, 1972, and yachts shall hold to any course and directions prescribed during the Shipping Advice Broadcast. Yachts found to have impeded the progress of a commercial vessel will be disqualified.
- 9.9. A yacht or its equipment may be inspected at any time for compliance with the ORCV safety rules, the Notice of Race and these Sailing Instructions.
- 9.10. The Race Director may, at their absolute discretion, disqualify a yacht from participating or continuing to participate in the race if they believe that it is unsafe for that yacht to commence or continue to race.
- 9.11. Yachts must complete the Return Voyage Plan included as part of the Declaration in *Appendix E Race Declaration*.

10. UNSUITABLE CONDITIONS

- 10.1. After commencement of the race, the race can be terminated at the Race Committee's discretion.
- 10.2. The Race Committee may deem the race to be abandoned, rescheduled to another time or shortened.
- 10.3. Prorated positions may be used to determine a result for the race and/or for any series.
- 10.4. Termination of the race will be advised by radio communications or mobile phone as available.

11. RACE COMMUNICATIONS

Race communications procedures are detailed in *Appendix A Race Communications*.

12. DISCLAIMER OF LIABILITY

- 12.1. All those taking part in this race do so at their own risk and responsibility.

12.2. Acceptance of a yacht as an entrant in the race is not to be taken as express or implied acceptance on the part of the ORCV and/or any of its Flag Officers, Committee Members, Equipment Auditors, Employees, Volunteers or any other members, of the fitness of any yacht or any equipment on such yacht to safely compete in the race, and/or deal with any and all eventualities of the contemplated passage. It is the responsibility of each skipper of each competing yacht to decide whether his/her yacht is fit and suitably crewed for the intended purpose, and neither the ORCV nor any club, person or company connected with

the organisation of the race is responsible for the seaworthiness of any yacht whose entry is accepted.

12.3. Attention is drawn to Fundamental Rule 4 "Decision to Race" of the RRS which states:

The responsibility for a boat's decision to participate in a race or to continue racing is hers alone.

13. APPENDICES

The attached Appendices A, B, C, D and E form part of these Sailing Instructions.

Appendix A RACE COMMUNICATIONS

THIS APPENDIX DESCRIBES THE RADIO AND OTHER COMMUNICATIONS PROCEDURES TO BE FOLLOWED DURING THIS RACE.

A1 GENERAL

- A1.1 While racing, a yacht shall neither make nor receive radio communications not available to all yachts. This restriction also applies to mobile telephones and satellite phones.
- A1.2 It is compulsory for yachts to respond to all scheduled radio communications, including the Sign-On Schedule and the Position Schedule. Penalties for missing the Position Schedule are given in SI 7.5.
- A1.3 Yachts must not give false or misleading position reports.
- A1.4 Yachts must not interfere with operation of any tracking units.
- A1.5 Yachts with AIS transponders must have them switched on at all times.
- A1.6 Yachts are required to monitor VHF Channel 16 at all times when not actually using the radio with other channels.

A2 COMMUNICATION CHANNELS

A2.1 The following VHF channels may be used:

Channel	Usage
82	Pre-race Communications Position Schedule
12	Shipping Advice Broadcast Premature Starters
73	Finishing Reports
16	Distress & Calling
67	Working, MSI

A2.2 The following telephone numbers may be used:

Number	Usage
0418 396 605	Race Director's Phone Crew changes Satphone Position Schedules

A2.3 The following email addresses may be used:

Email Address	Usage
race.director@orcv.org.au	Race director messages

A2.4 When mobile or satphone coverage is available, the Race Director may be contacted on the Race Director's phone (0418 396 605).

A2.5 Yachts are required to monitor VHF Channel 82 starting at 0505. This channel may be used to notify yachts of changes to any procedural matters.

A3 RACE RADIO STATIONS

A3.1 ORCV (*Ocean Racing*)

- Pre-race Communications (VHF 82)
- Shipping Advice Broadcast (VHF 12)
- Premature starters (VHF 12)
- Finishing Reports (SMS, VHF 73)
- Heads Exit photographs (SMS)
- Race Declarations (SMS)

A3.2 Any other yacht or station nominated by Ocean Racing will provide assistance where necessary.

A3.3 Changes to race radio stations may be announced following the Sign-On Schedule.

A4 CREW CHANGES

A4.1 Late crew changes may be notified by calling the Race Director's mobile telephone between 1800 and 2100 on Friday, 17 May 2019.

A4.2 When nominating additional crew, the following details are required to be entered in the online entry system: name of crew member, address, age, Australian Sailing membership number, PLB number and next of kin details including relationship to crew member, contact address and telephone number.

A5 SIGN ON SCHEDULE

A5.1 A sign on schedule will be conducted on VHF Channel 82 by the ORCV (*Ocean Racing*) commencing at 0535 and concluding no later than 0645 on Saturday, 18 May 2019.

A5.2 Any changes to these Sailing Instructions and changes to yacht handicaps will also be announced during the schedule.

A5.3 Yachts will be called in alphabetical order to confirm that they are starters in the race. If intending to race, yachts must reply "yacht

name} is a starter, we comply with the Notice of Race, {xx} persons on board, OVER".

- A5.4 Yachts that do not respond on the first call must wait until they are called again at the end of the schedule.
- A5.5 Any yacht failing to respond on the Race Frequency during this schedule shall not be considered a starter in the event and shall be scored DNS.
- A5.6 In case of difficulties, yachts should contact the Race Director via an SMS text message to 0418 396 605. The SMS facilities of the yacht's tracker may be used for this purpose.
- A5.7 Any changes to the stations and frequencies used for the Sign-On Schedule will be notified prior to the Sign-On Schedule on VHF Channel 82.

A6 SHIPPING ADVICE BROADCAST

At 0645, *Ocean Racing* will broadcast advice of shipping movements through Port Phillip Heads on VHF Channel 12.

- A6.1 All yachts are required to monitor this broadcast and maintain a listening watch on VHF Channel 12 until they are three nautical miles outside Port Phillip Heads. Lonsdale VTS and any shipping transiting the Heads will be monitoring this frequency as well.
- A6.2 Yachts should revert to the Race Frequency and VHF Channel 16 when three miles clear of the Heads.

A7 PREMATURE STARTERS

Premature starters may be identified on VHF Channel 12.

A8 POSITION SCHEDULE

- A8.1 A single Position Schedule will be conducted by the ORCV (*Ocean Racing*) on VHF Channel 82 at 1205 on Saturday, 18 May 2019. The position reported will be the yacht's position at 1200.
- A8.2 Yachts will report their position in degrees and whole minutes only of Latitude and Longitude.
- A8.3 At the conclusion of the schedule, yachts are encouraged to give safety-related information should the skipper consider it would be to the benefit and safety of the fleet, for example if conditions are severe. If weather conditions are given it is important that the transmission be kept as brief as possible and give factual information such as wind speed and direction and wave conditions.

- A8.4 At the discretion of the Race Committee, notice may be given at the Position Schedule instituting additional reporting requirements.

A9 FINISHING REPORTS

Once a yacht is estimated to be 30 minutes from the finish, it must report as described in SID1.

A10 AD HOC COMMUNICATIONS

Yachts needing to make contact with Ocean Racing not during the Position Schedule or Reporting time should do so using one of the following methods:

Method	Period
VHF 82	This repeater channel will be monitored at most times although reception may be difficult inshore due to the geography of the coast.
VHF 73	The channel will be monitored at all times but the range will be limited to line of sight of Apollo Bay.
0418 396 605	There is reasonable mobile phone reception all along the coast. If a satphone is available, this may be used if preferred.
VHF 16	If all the above fail or it is an emergency, Marine Radio Victoria (Kordia) may be contacted on this channel.

A11 RADIO FAILURE

- A11.1 In the event of a VHF radio failure after the start of the race, every effort should be made to contact the race director by mobile phone (0418 396 605).
- A11.2 Endeavour to place yourself in the vicinity of another vessel so that you can be identified and your position relayed to the radio station.
- A11.3 The reason for failure to report at the Position Schedule time for any reason must be recorded on the yacht's Race Declaration in *Appendix E Race Declaration*.

A12 YACHTS RETIRING

- A12.1 Should a yacht retire from the race, every effort must be made to advise the ORCV (*Ocean Racing*) or the Race Director by mobile phone

or satphone as soon as possible and to give the following information:

- Time & position at the time of retirement
- Reason for retirement
- The state of the crew
- The port to which the yacht is retiring.

A12.2 Yachts that retire shall maintain any required Schedules and Reports until such time as they reach a safe harbour.

A12.3 Within two hours of arrival at a safe harbour, contact must be made with ORCV (*Ocean Racing*) by radio or the Race Director's phone (0418 396 605) to confirm safe arrival. Failure to comply with this requirement may prejudice acceptance of an entry in future races.

A13 ASSISTANCE & INFORMATION

A13.1 The trackers have a distress function. Crews should familiarise themselves with the operation of this function.

A13.2 Marine Radio Victoria

Marine Radio Victoria now monitor emergency channels (16/67) up to 20 nm off

the Victorian Coast. Marine Radio Victoria is operated by Kordia.

A13.3 Repeater Network

Some VHF Repeaters are also available in the race area. The Victorian and Tasmanian repeaters are shown in the diagram in SI A15. It should be noted that these repeaters are not continuously monitored.

A13.4 Additional Stations

In addition, the following stations may be of assistance:

- Coastguard Melbourne - VHF Channels 82 and 22 to 40° South
- Ocean Racing – VHF Channel 16, 73 and 82

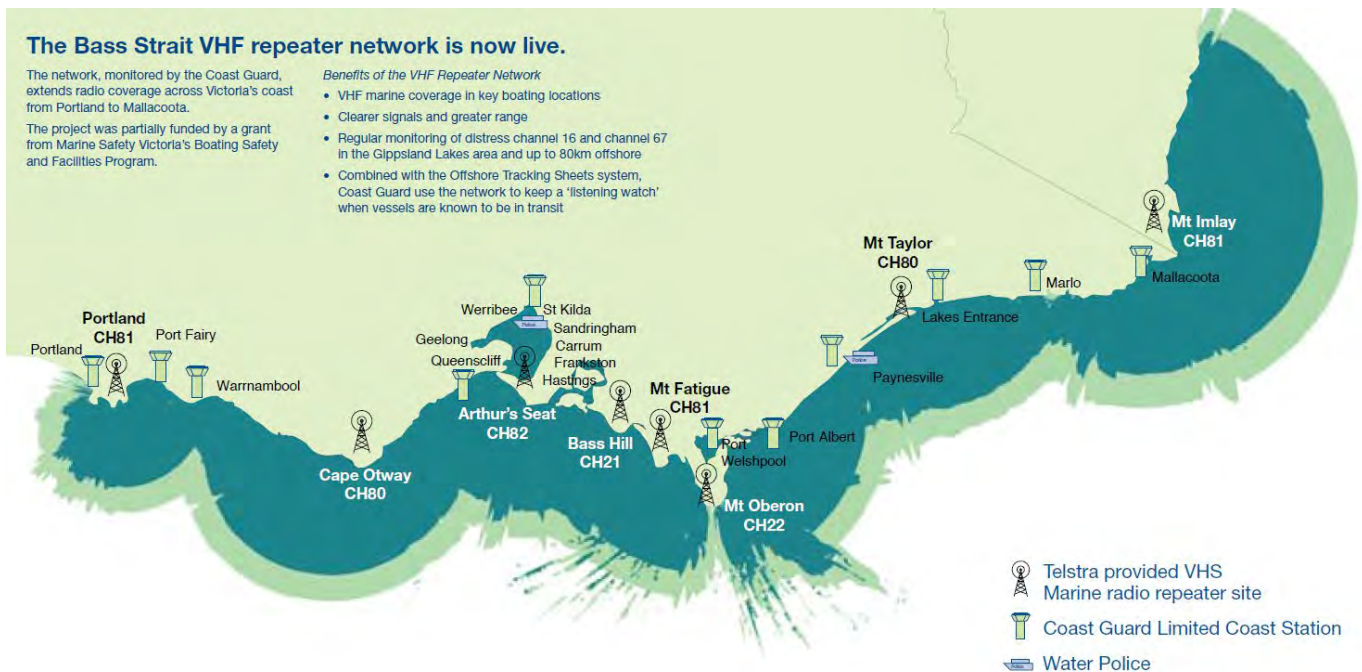
A13.5 Weather

Most coastal radio stations provide regular local weather forecasts on VHF radio, with instructions and broadcast times announced regularly on Channel 16. Remember to always listen on Channel 16 for distress and safety calls.

A14 SUMMARY

Date	Time	Action	Channel	Station	Ref
17 May	1800-2100	Crew Changes	0418 396 605	Race Director	SI A4
18 May	0505-0645	Monitor	VHF Channel 82	Ocean Racing	SI A2.5
18 May	0535-0645	Sign-On Schedule	VHF Channel 82	Ocean Racing	SI A5
18 May	0645	Shipping Advice	VHF Channel 12	Ocean Racing	SI A6
18 May	0655-0700	Starting Sequence	VHF Channel 12	Ocean Racing	SI B4
18 May	0700	Individual recalls may be notified	VHF Channel 12	Ocean Racing	SI A7
18 May	1205	Position Schedule	VHF Channel 82	Ocean Racing	SI A8
Finish – 30 minutes		Finishing Report	VHF Channel 73	Ocean Racing	SI A9, D1
Finish – 5 minutes		Finishing Report	VHF Channel 73	Ocean Racing	SI A9, D1

A15 REPEATER NETWORK



Appendix B START

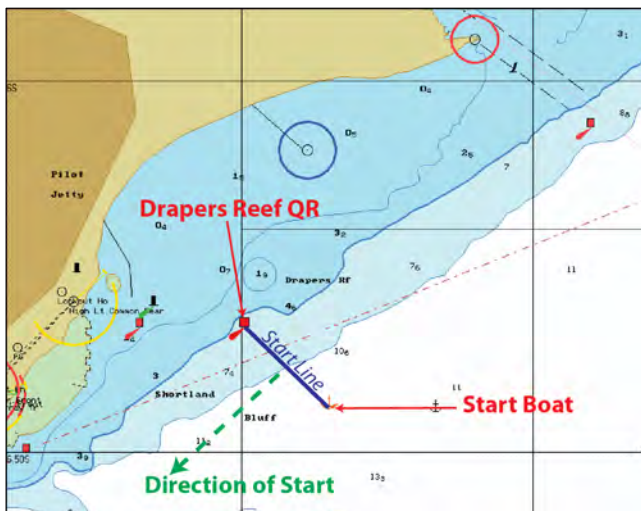
THIS APPENDIX CONTAINS INFORMATION ABOUT THE STARTING LINE AND THE STARTING PROCEDURES. NOTE: THE POSITIONS SHOWN IN THESE DIAGRAMS ARE APPROXIMATE AND FOR ILLUSTRATIVE PURPOSES ONLY. THE DIAGRAMS SHOULD NOT BE USED FOR NAVIGATION AND THE POSITIONS SHOWN MAY VARY ON THE DAY.

B1 START TIME

The start time will be 0700 on Saturday, 18 May 2019 in the vicinity of Drapers Reef, Queenscliff, always allowing the Race Committee, at their discretion, to postpone to another time.

B2 STARTING LINE

B2.1 The Starting Line shall be an imaginary line between a Quick Flashing Red (QR) Light on the Drapers Reef Pile and a vessel or a buoy with a rotating blue light approximately 300 metres to the south east.



B2.2 In the event of rough weather or other unforeseen difficulties, the vessel or buoy may not be in position. In this case the starting line will be an extension of an imaginary line from a rotating amber light on shore and the Draper's Reef Light, this line running almost east to west to a distance not exceeding 400 metres.

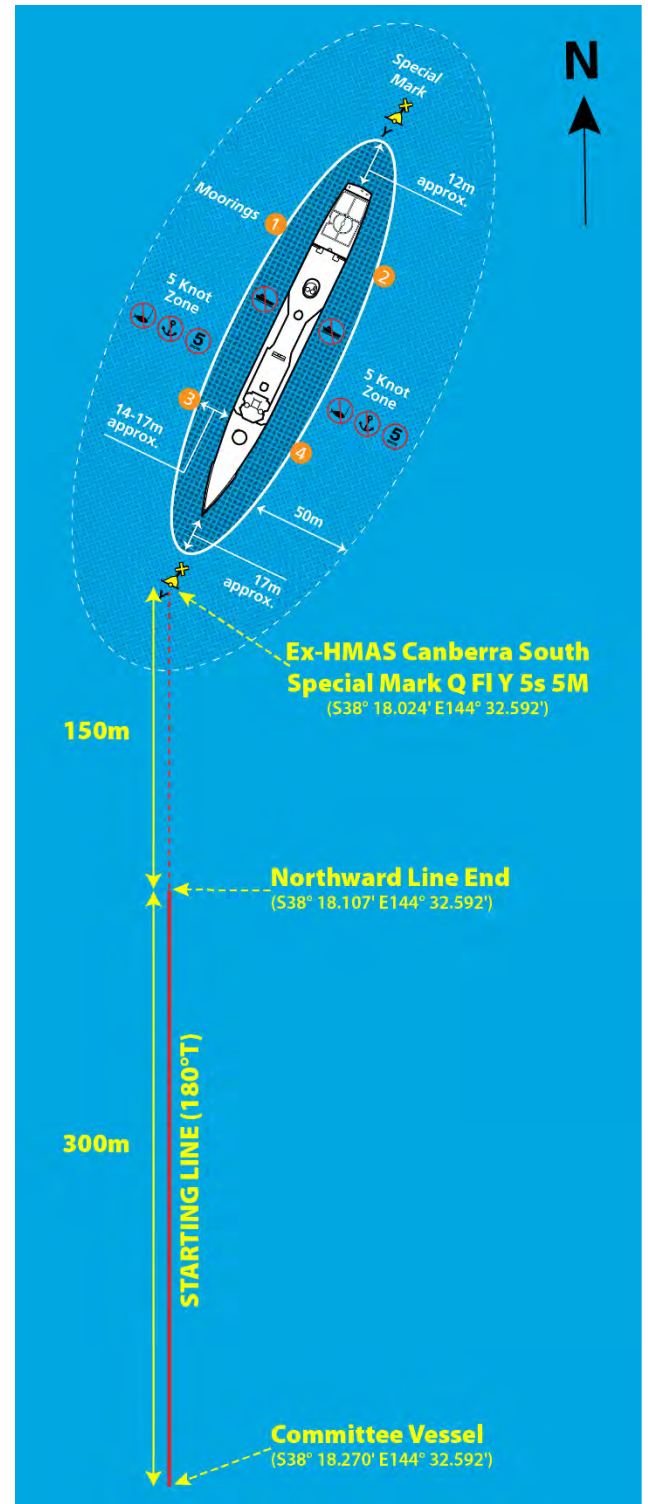
B2.3 Yachts shall start in a South-Westerly direction.

B3 ALTERNATIVE STARTING LINE

B3.1 If the Race Committee determines it necessary, an Alternative Starting Line may be announced by the Race Director to avoid the fleet becoming becalmed in the Heads.

B3.2 If the Alternative Starting Line is to be used, this will be announced at the Sign-On Schedule along with a revised start time to enable competitors to reach the start location.

B3.3 After clearing the Heads on the way to the start, yachts will set their radios to VHF Channel 82 in case further instructions need to be given to the fleet. All such notices will be given on VHF Channel 82 until the start has completed.



- B3.4 The Alternative Starting Line shall be an imaginary line beginning 150m to the South of the Quick Flashing Special Mark (Q FI Y 5s 5M) at the seaward end of the Ex-HMAS Canberra Dive Site and a vessel with a rotating blue light approximately 450 metres to the South.
- B3.5 The Quick Flashing Special Mark is located at approximately S38° 18.024' E144° 32.592'. The inner (northward) end of the starting line is at approximately S38° 18.107' E144° 32.592'. The outer (southward) end of the starting line is at approximately S38° 18.270' E144° 32.592'.
- B3.6 Yachts shall start in a Westerly direction.
- B3.7 If the start vessel is unable to be present, the start sequence will be conducted by radio on VHF Channel 82.

B4 START PROCEDURE

- B4.1 Races will be started using the following signals with flares replacing flags as visual signals.

- 0655 Warning Signal (white flare)
- 0700 Starting Signal (green flare)

There will be no Preparatory or One Minute signals (amends RRS 26).

- B4.2 Individual recalls may be signalled by one white flare. Premature starters may be identified on VHF Channel 12 (amends RRS 29.1).
- B4.3 There will be no General Recall (amends RRS 29.2).

B5 POSTPONEMENTS

- B5.1 A postponement may apply if a Bureau of Meteorology Gale Warning is forecast for any part of the course.
- B5.2 Postponements will be announced by SMS to each yacht on their primary registered contact phone. In addition, an announcement may be made on VHF Channel 82 before the Sign-On Schedule (amends RRS 27.3).

Appendix C COURSE

THIS APPENDIX DESCRIBES THE COURSE AND HOW IT IS TO BE SAILED. NOTE: THE POSITIONS SHOWN IN THESE DIAGRAMS ARE APPROXIMATE AND FOR ILLUSTRATIVE PURPOSES ONLY. THE DIAGRAMS SHOULD NOT BE USED FOR NAVIGATION AND THE POSITIONS SHOWN MAY VARY ON THE DAY.

C1 PRIMARY COURSE

For races starting inside Port Phillip Heads at the starting line described in SI B2:

- From the starting line,
- Avoiding the Heads Exclusion Zone as described in SI C3, and
- Then to the finishing line at Apollo Bay.

C2 ALTERNATIVE COURSE

For races starting outside Port Phillip Heads as described in SI B3:

- From the starting line;
- To the finishing line at Apollo Bay.

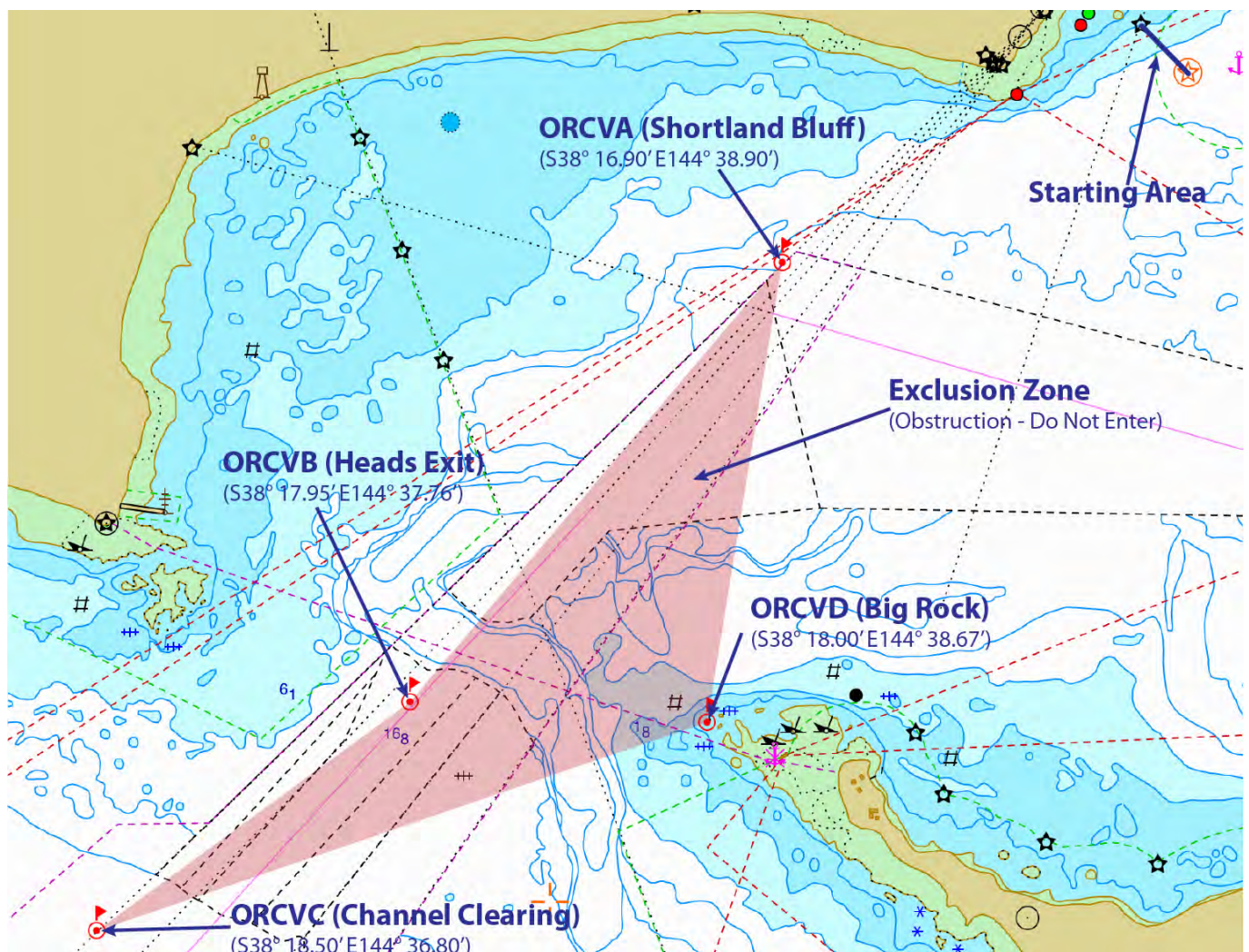
C3 HEADS EXCLUSION ZONE

C3.1 Yachts are required to keep out of the main channels in Port Phillip Heads and to avoid obstructing shipping.

The area bounded by the following locations, shown in the diagram below, is an obstruction:

Mark	Position	Description
ORCVA	S38° 16.90' E144° 38.90'	Shortland Bluff
ORCVB	S38° 17.95' E144° 37.76'	Heads Exit
ORCVC	S38° 18.50' E144° 36.80'	Channel Clearing
ORCVD	S38° 18.00' E144° 38.67'	Big Rock

C3.2 Yachts shown or found to have sailed within the bounds of this obstruction may be protested and will be penalised as described in SI 7.6.



C3.3 Yachts are required to submit a smart phone photograph by SMS to the Race Director on 0418 396 605 showing compliance with the Heads Exclusion Zone provisions in this

appendix. This photograph may be submitted with or prior to the race declaration.

Appendix D FINISH

THIS APPENDIX DESCRIBES THE FINISHING LINE AND THE POST-FINISHING PROCEDURES. NOTE: THE POSITIONS SHOWN IN THESE DIAGRAMS ARE APPROXIMATE AND FOR ILLUSTRATIVE PURPOSES ONLY. THE DIAGRAMS SHOULD NOT BE USED FOR NAVIGATION AND THE POSITIONS SHOWN MAY VARY ON THE DAY.

D1 REPORTING

D1.1 Each yacht is required to SMS the Race Director's phone (0418 396 605) when they are about 30 minutes from the finish, advising their location and estimated time of arrival at the finishing line.

D1.2 Yachts with no mobile phone reception, may use VHF Channel 73 to make the same report to *Ocean Racing*.

D1.3 SMS reporting messages should in the following format:

Fin {Yacht} {SN}, {dd mm ddd mm}, ETA {hhmm}

where {Yacht} is the yacht's name, {SN} is its sail number, {dd mm ddd mm} is the degrees and minutes of latitude and longitude of the yacht's current position and {hhmm} is the estimated time of arrival, hours and minutes in 24-hour format.

D1.4 After the 30 minutes report, radios should be left on VHF Channel 73 to enable communications with the finishing line.

D1.5 As a yacht approaches the finishing line and no later than 5 minutes out, they should call to Ocean Racing on VHF Channel 73 to report their imminent arrival.

Note: This is especially important at night or when visibility is limited. Yachts that fail to make this call in a timely manner may not receive an accurate finishing time.

D1.6 In addition to the above, yachts must maintain any routine radio Schedules and Reports until they have crossed the finishing line.

D1.7 After finishing, radios should be left on until the yacht has berthed to facilitate communications with the Race Committee.



D2 FINISHING LINE

- D2.1 The finishing line is an imaginary line being an extension of the transit line between the lower of the Apollo Bay Boat Harbour entrance leading marks and the end of the breakwater on the western edge of the harbour entrance and extending for a distance of 500 metres to seaward from the end of the breakwater.
- D2.2 The alignment of the finishing line is approximately 205°T. The outer end of the finishing line is at approximately S38°45.17' E143° 40.81'.

D3 FINISHING PROCEDURE

- D3.1 Yachts finishing at night are required to illuminate their sail numbers or turn on their spreader lights when approaching the finishing line. The Race Committee may request further aids to identification as yachts approach the line.
- D3.2 Unless circumstances prevent it, the finishing times of all yachts will be taken by the Race Committee at the finish but as a back-up, skippers are requested to record their own finishing times, accurate to 1 second, and to inform the Race Committee of this time if requested.

D4 DECLARATIONS

- D4.1 Each yacht is required to lodge a declaration on the form provided in *Appendix E Race Declaration* with a member of the Race Committee within 1 hour of the yacht finishing the race. Failure to comply may be taken to mean that the yacht has retired from the race.
- D4.2 Declarations may be handed manually or sent by email or SMS as a photograph or PDF to the Race Director.

D4.3 If a skipper is uncertain as to whether a rule has been breached, they should report the circumstances on the back of this declaration form.

D4.4 Any yacht proceeding directly to another port after finishing the race shall send its declaration to the Race Director by email or SMS as described above within one hour of finishing and advise its intentions at this time.

D5 MOORING FACILITIES

- D5.1 Berths are available on the North side of the harbour (inner side of the breakwater).
- D5.2 Water depth at Apollo Bay Boat Harbour has improved with dredging underway or recently completed. Further information will be posted on the ORCV website (www.orcv.org.au) as it becomes available.
- D5.3 Note: Attempting to enter the harbour during strong Easterlies can be very hazardous.

D6 CREW BEHAVIOUR

- D6.1 All participants are reminded that they are expected to comply with the Australian Sailing member protection policies described in <https://www.sailingresources.org.au/clubresources/memberprotection/>.
- D6.2 Skippers are reminded that crew behaviour is their responsibility at all times, including post-race celebrations.
- D6.3 Please be mindful of others and be aware of your behaviour as you would be in the High Street of your home town.
- D6.4 No flares of any type are to be fired while the yacht is moored at Apollo Bay Boat Harbour. Civil authorities have severe penalties for any offenders. Skippers are reminded that the best way of ensuring that no flares are fired from their yacht is to place them under lock and key.

D7 APOLLO BAY TIDES

Apollo Bay, VIC – May 2019						
SAT 18 MAY	SUN 19 MAY	MON 20 MAY	TUE 21 MAY	WED 22 MAY	THU 23 MAY	FRI 24 MAY
LOW 3:59 am 0.74 m	LOW 4:52 am 0.63 m	LOW 5:40 am 0.54 m	HIGH 12:37 am 1.80 m	HIGH 1:20 am 1.76 m	HIGH 2:00 am 1.72 m	HIGH 2:37 am 1.67 m
HIGH 11:11 am 2.00 m	HIGH 12:08 pm 2.15 m	HIGH 12:57 pm 2.25 m	LOW 6:24 am 0.46 m	LOW 7:07 am 0.42 m	LOW 7:49 am 0.40 m	LOW 8:30 am 0.42 m
LOW 4:45 pm 1.12 m	LOW 5:47 pm 1.09 m	LOW 6:40 pm 1.04 m	HIGH 1:40 pm 2.28 m	HIGH 2:20 pm 2.25 m	HIGH 2:59 pm 2.19 m	HIGH 3:35 pm 2.11 m
HIGH 10:56 pm 1.80 m	HIGH 11:49 pm 1.81 m		LOW 7:27 pm 0.99 m	LOW 8:10 pm 0.93 m	LOW 8:49 pm 0.88 m	LOW 9:26 pm 0.85 m

Appendix E RACE DECLARATION

Declaration

I, [Person in charge], being in charge of the yacht [Yacht name] have adhered to the rules and conditions of the 2019 Melbourne to Apollo Bay Yacht Race and have noted any required declarations on the rear of this form.

- Please tick if you had a safety related incident or near miss during the race. If so, someone from the Incident Management Team will contact you for details.

..... [Signature] [Date]

Return Voyage

Details of the planned return voyage are:

Expected date/time of departure	
Destination	
Expected date/time of arrival	
Shore based contact who'll be aware of crew changes, next of kin and voyage progress	Name: Tel:
Shore Radio Station with which the yacht will maintain position schedules	<i>Note: Returning yachts are required to maintain position schedules until they have re-entered Port Phillip</i>
Same crew as for race	<input type="checkbox"/> Yes <input type="checkbox"/> No, details in table below

Expected crew changes for the return voyage (additions, deletions):

Name	Role(s) or "Deleted"	Next of Kin (for additions)	Phone Number(s)

I note that the ORCV recommends that at least 50% of the crew have completed a similar voyage.

Any changes to return crew or sailing plan after handing in this form must be reported to ORCV on 0418 396 605.

Signed: [Person in Charge] [Date]

PTO: Please complete *Sailing Intentions Questionnaire* on the reverse of this form.

2019 SAILING INTENTIONS QUESTIONNAIRE

The past 4 ORCV offshore races have attracted entries from 18 yachts and skippers who have not previously participated in our events and there are signs of improved participation in offshore racing by Victorian-based yachts.

At the same time race preferences are changing and this year includes particular challenges associated with our Easter and Christmas races. We are currently reviewing the program and our planning would be improved if you could provide us with an indication of your sailing intentions in the following table.

Event Name	Start Date (2019)	Expect to Participate	May Participate	Unlikely to Participate
Winter Series	June – September			
Stanley Race	2 November (Cup Weekend)			
Latitude Series	23-24 November			
Devonport Race	27 December			
Westcoaster Race	27 December			

ADDITIONAL COMMENTS: