

# King Island Rally

## Briefing



Grant Dunoon

# King Island Rally

## Agenda

- Muster area and start
- Heads exit process
- Support boat & medical emergency
- Weather & alternate safe harbours
- Communications
- Trackers
- MOB
- Tasmania Covid entry requirements
- Navigating into Grassy Harbour
- Mooring & tender service
- King Island Boat Club functions
- Return
- Safe entry back through the heads and tides
- Q & A

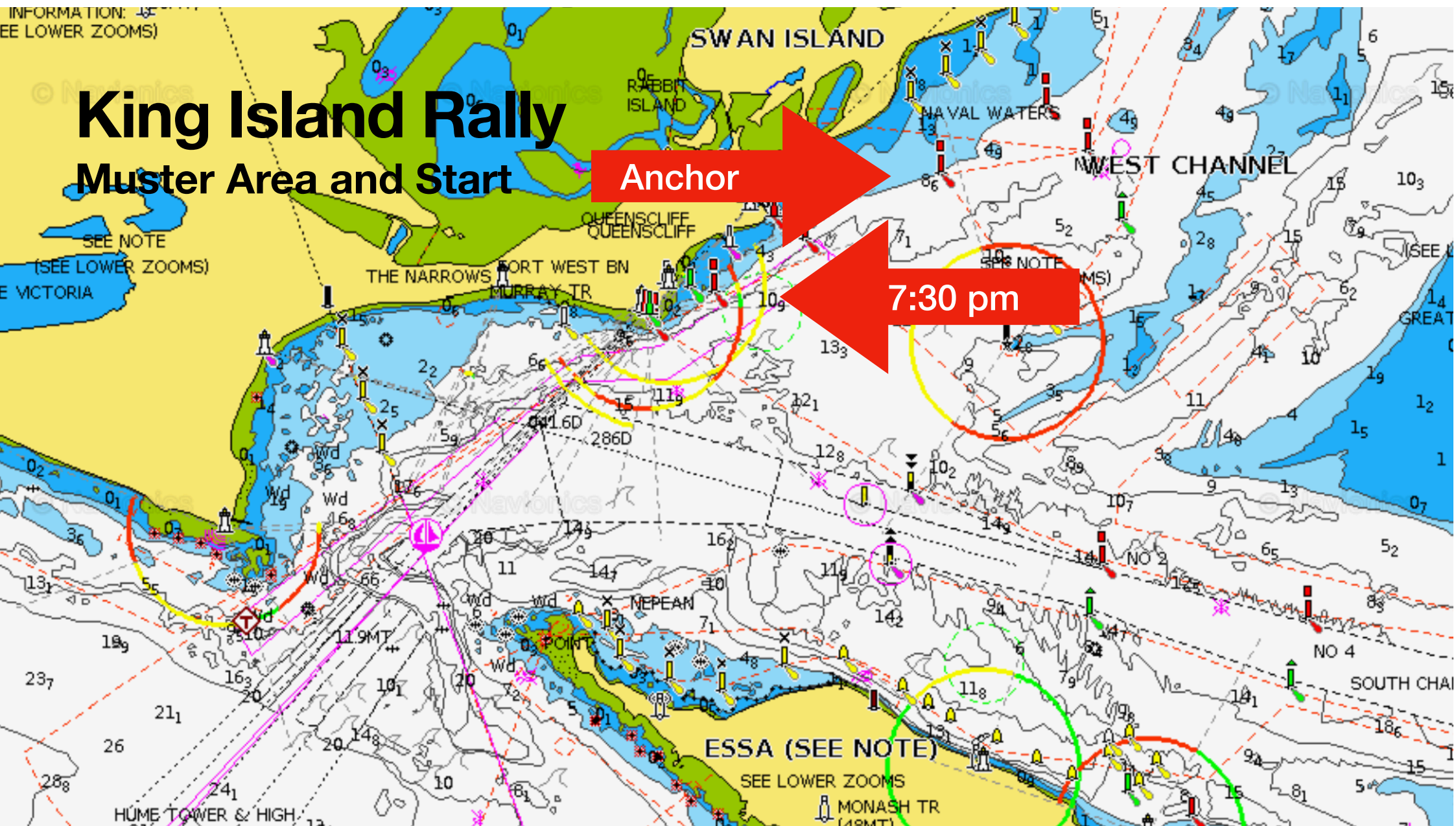


# King Island Rally

## Muster Area and Start

Anchor

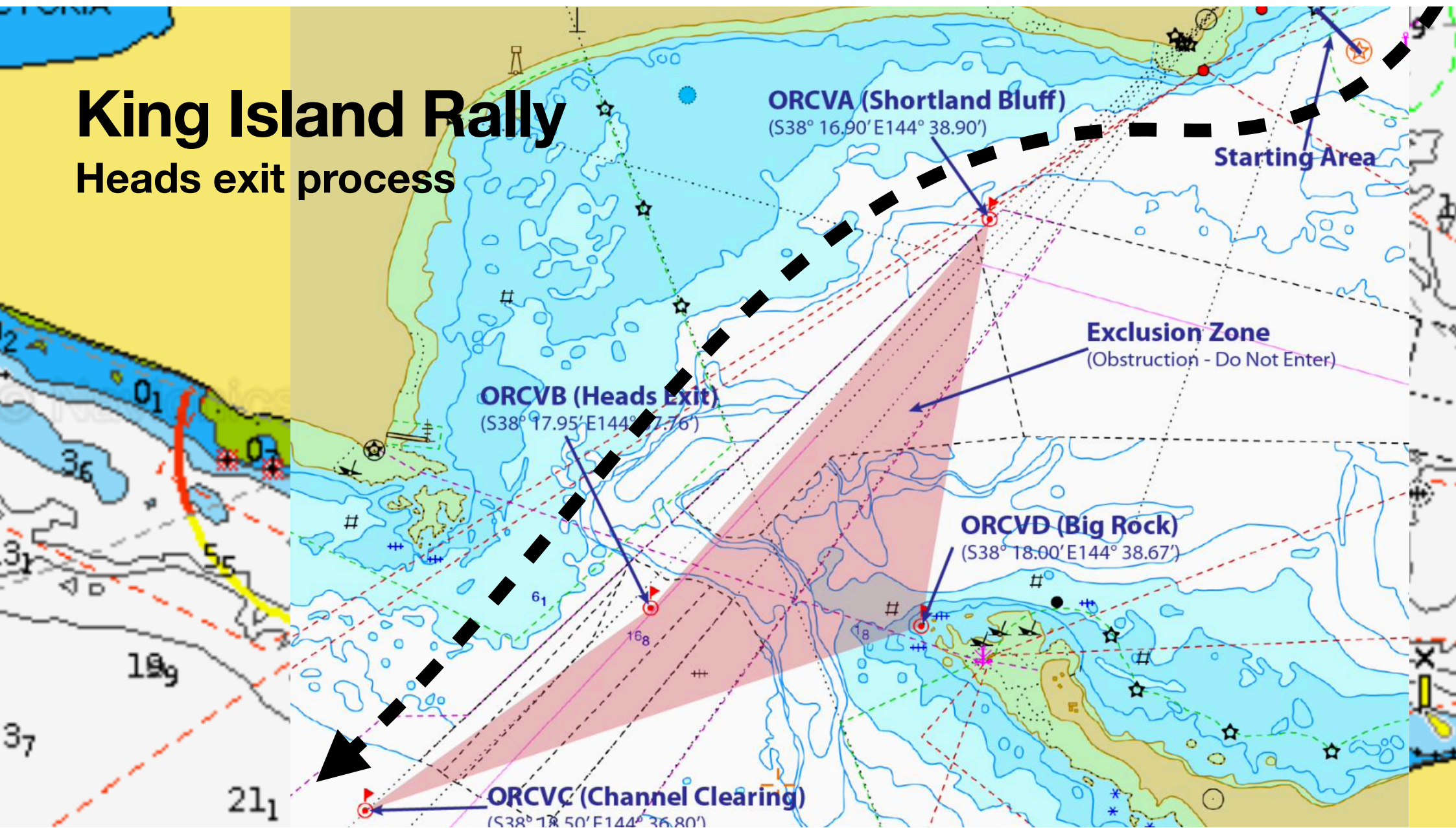
7:30 pm





# King Island Rally

Heads exit process





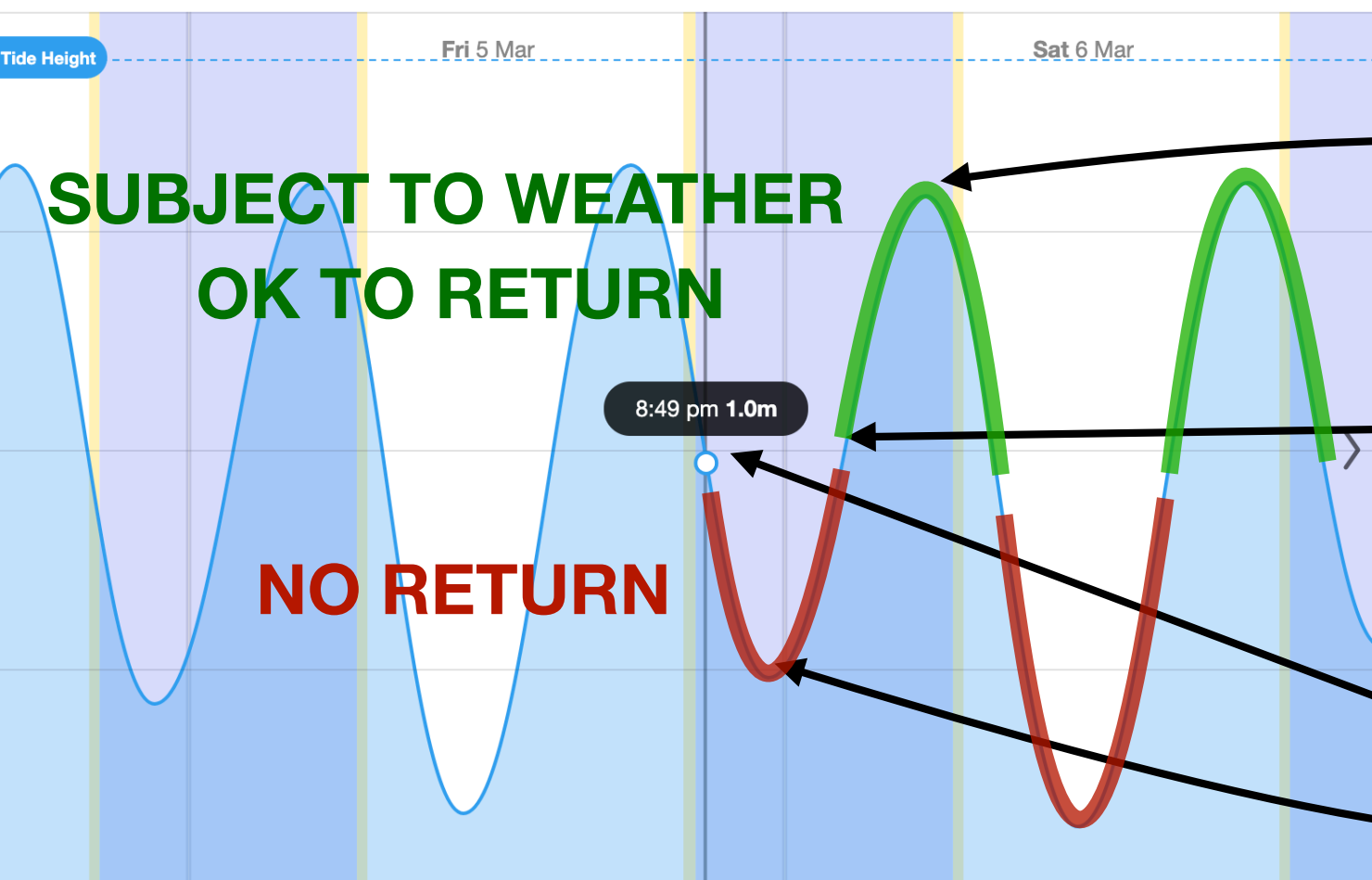
# King Island Rally

Heads exit process



# King Island Rally

## Heads tides



### The Rip, VIC – March 2021

Please note: The predictions are in daylight saving

FRI 5 MAR			SAT 6 MAR		
SLACK	MAXIMUM		SLACK	MAXIMUM	
TIME	TIME	RATE	TIME	TIME	RATE
2:02 am	4:38 am	+8.98	2:43 am	5:16 am	+3.76
7:39 am	10:25 am	-6.40	8:14 am	11:02 am	-6.44
2:36 pm	5:16 pm	+4.34	3:20 pm	6:01 pm	+4.24
8:47 pm	11:19 pm	-4.94	9:40 pm		



# King Island Rally

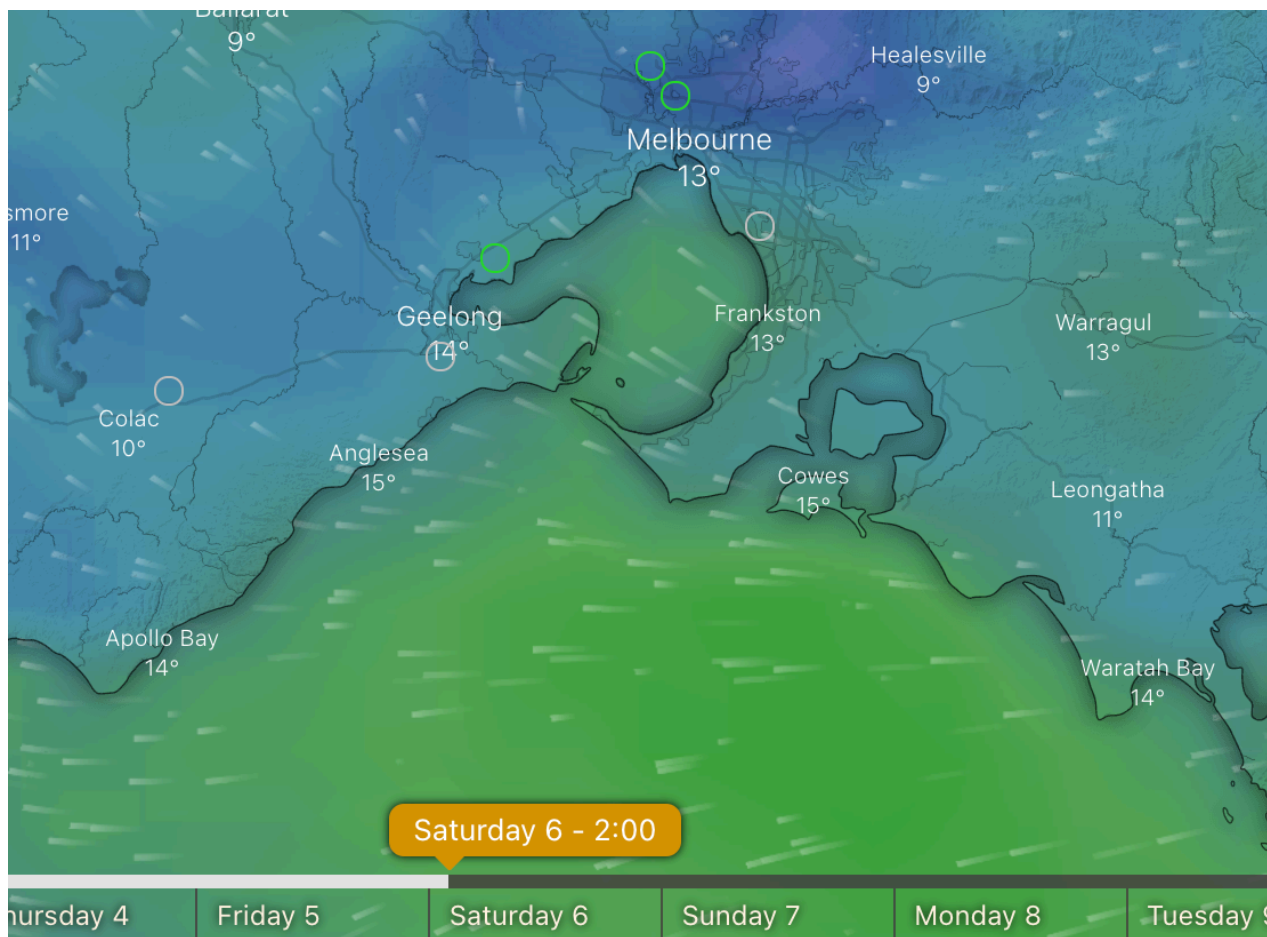
## Support boat & medical emergency

- Blue Water Tracks
  - 3 nm last boat
  - Full Cat 2 medical kit
    - Defibrillator
    - Splints & Neck braces
    - Stapler & dentist kit
- AMSA
  - Jet for communication
  - Helicopter evacuation

# King Island Rally

## Weather & alternate safe harbours

- Apollo Bay 80nm  
(do not use if East wind)
- Stanley 70nm
- Melbourne





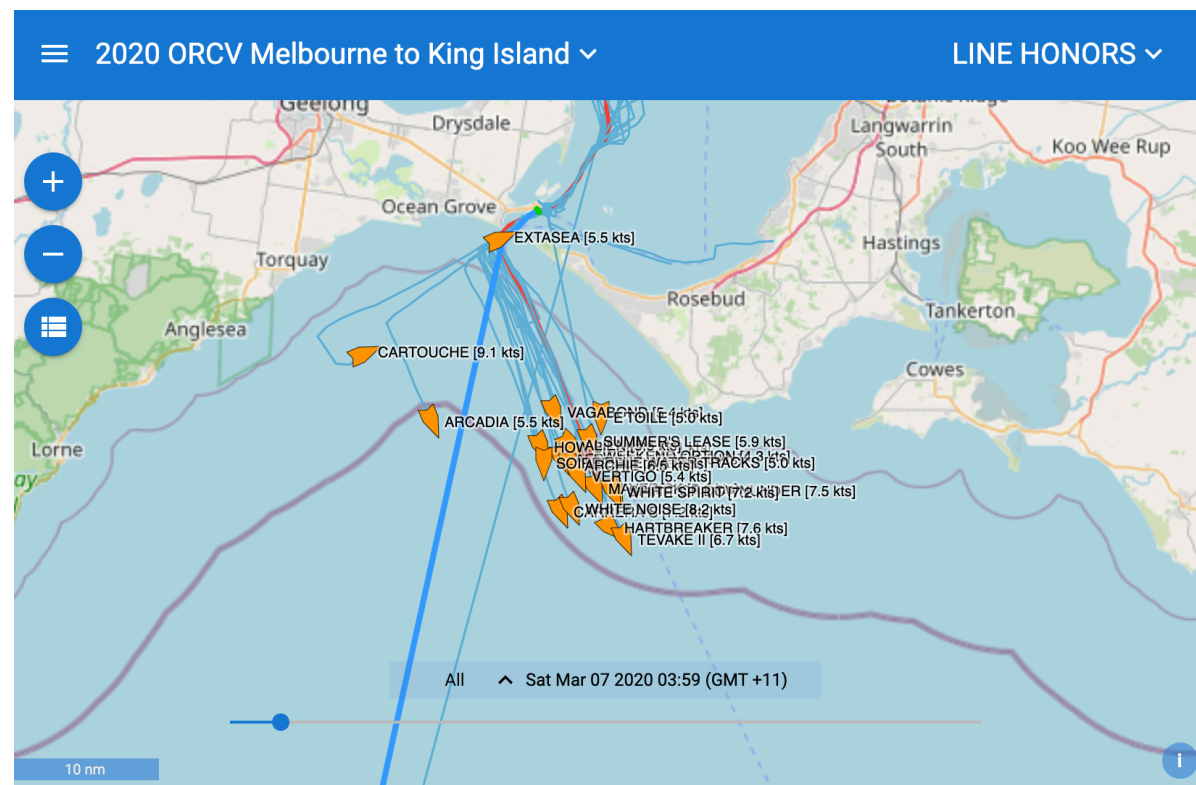
# King Island Rally

## Communications

- Blue Water Tracks
  - 1. VHF + Relay
  - 2. HF
  - 3. Sat phone SMS
- Position report: “Blue Water Tracks position 37 45, 144 26.

# King Island Rally Trackers

- <https://race.bluewatertracks.com/2021-rally-to-king-island>





# King Island Rally

## MOB

- All hands and recover the person
- If unsuccessful (can't find them)
  - Pan-pan call
  - Turn on boats EPIRB & throw in water

# King Island Rally

## Tasmania Covid entry requirements

- Everybody must register and obtain a QR Code
- This can only be done 3 days before arrival
- ORCV will send info closer to the time
- Email QR code on arrival: (address to be given latter)



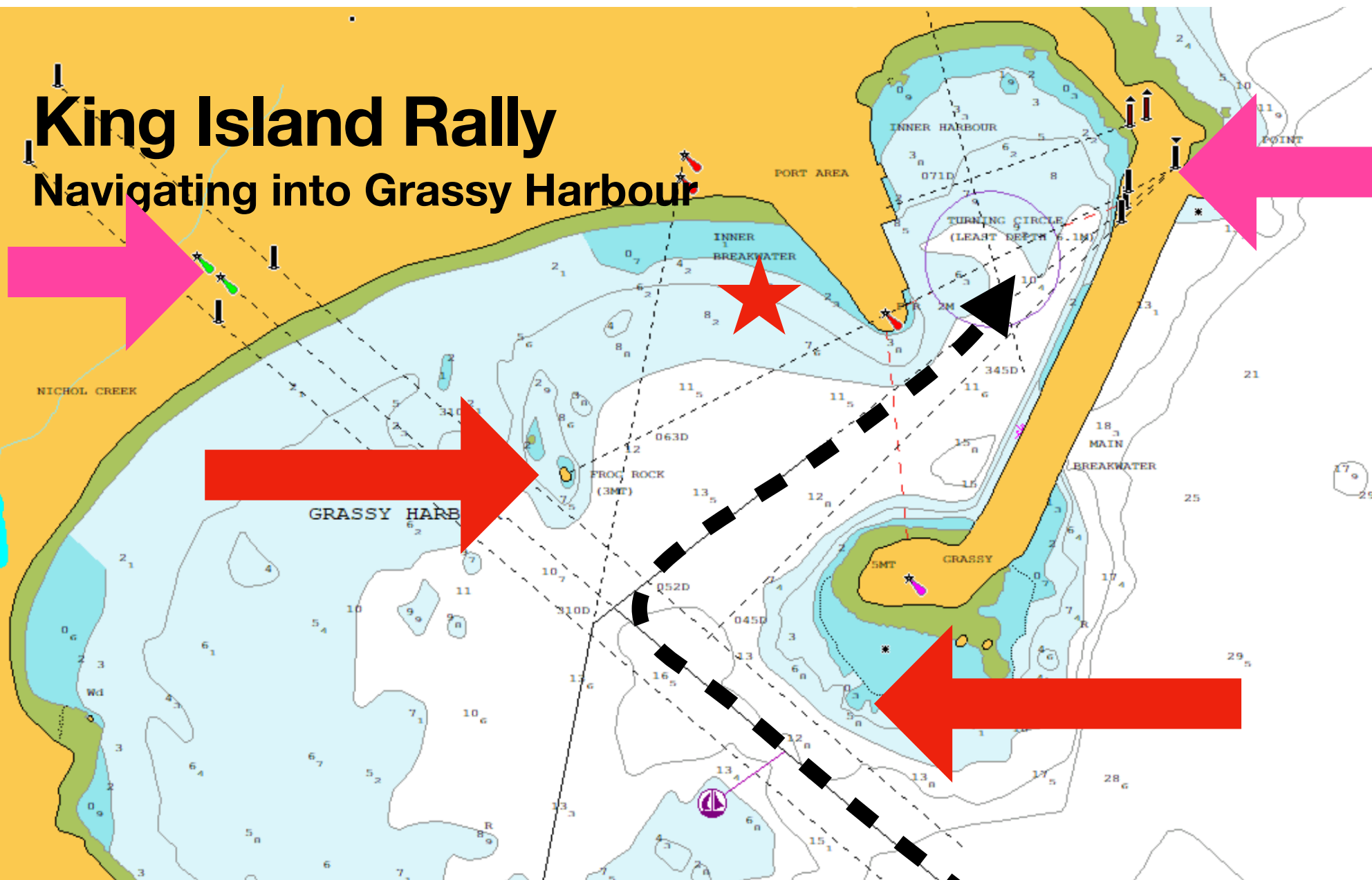
# King Island Rally

## Navigating into Grassy Harbour



# King Island Rally

## Navigating into Grassy Harbour



# King Island Rally

## Navigating into Grassy Harbour





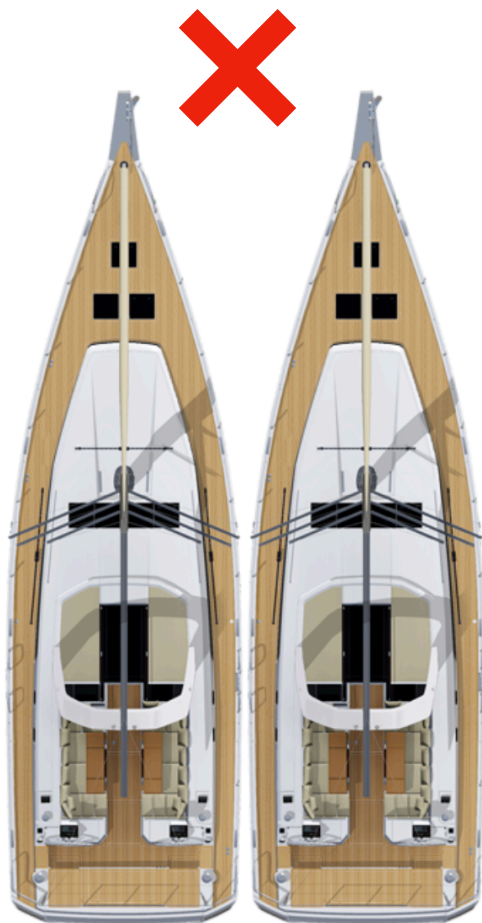
# King Island Rally

## Mooring & tender service

- Meet by tender, follow direction to a mooring
- Mooring - use own rope and loop through chain
- Rafting up - 3 to 5 boats
- If damage to a mooring, let us know
- Must wear mask on the tender!!

# King Island Rally

## Rafting



# King Island Rally

## King Island Boat Club functions

- Saturday night dinner
- Sunday breakfast + Presentation
- Masks on when ordering food & drinks
- Cash only (no Cards, no ATM)



# King Island Rally

## Return & heads tides

- Depart Sunday 12:00
- Time to heads (115nm)
  - 5 kts = 23 hrs (11am)
  - 6 kts = 19 hrs (7am)
  - 7 kts = 16 hrs (4am)

**5.5 kts**

MON 8 MAR		
SLACK	MAXIMUM	
TIME	TIME	RATE
	12:57 am	-4.09
4:04 am	6:37 am	+3.23
9:30 am	12:26 pm	-5.84
4:52 pm	7:39 pm	+3.82
11:34 pm		



# King Island Rally

## Lonsdale VTS

- Monitor ch 12
- Call Lonsdale VTS 30 min for shipping and advise intention:
- eg:

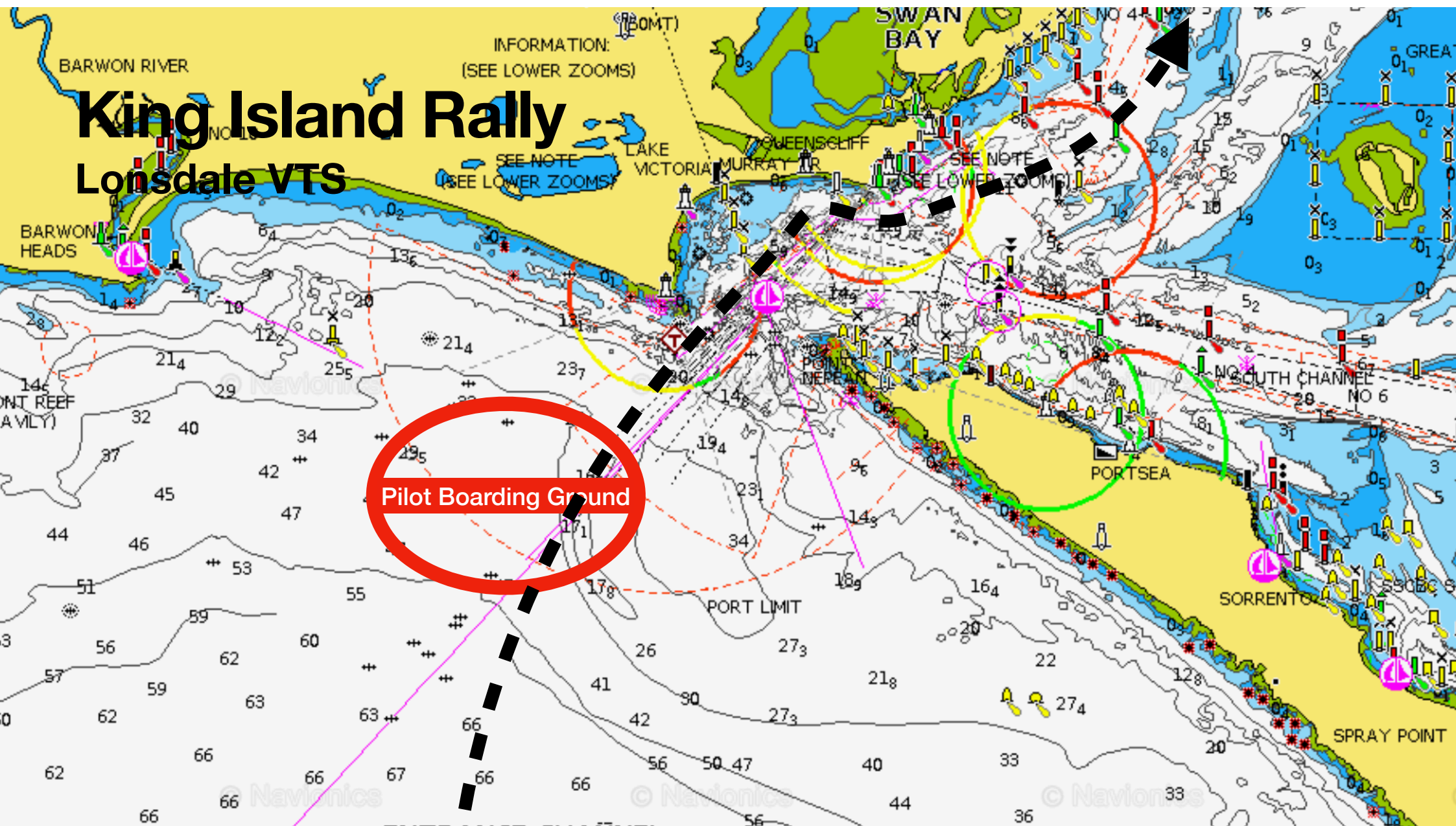
“Lonsdale VTS this is Blue Water Tracks”

“Blue Water Track this is Lonsdale VTS go ahead”

“Lonsdale VTS, Blue Water Tracks is 30min south of the heads, inbound via Four Fingers West and we will keep clear of commercial shipping traffic”

# King Island Rally

## Lonsdale VTS



# King Island Rally



## Q&A